

FOR SALE

SPA FOR 6-STOREY RESIDENTIAL,
69 UNITS & 89 PARKING SPACES



368-376 Essa Road
BARRIE, ONTARIO

Bill Iannou, Sales Representative
905.731.2000 | biannou@royallepage.ca

ROYAL LEPAGE REALTY TM
BROKERAGE INDEPENDENTLY OWNED & OPERATED

8854 Yonge St., Richmond Hill, ON L4C 0T4 | 905.731.2000

PROPERTY OVERVIEW

\$4,300,000.00

DETAILS

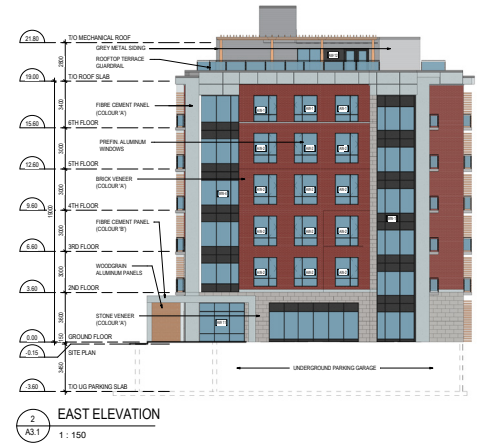
- Lot Area - 0.94 Acres
- Use - Residential
- Total Floor Area: 61,053 sq. ft.
- Total Storeys - 6
- Total Units - 69
- Total Parking Spots - 80

HIGHLIGHTS

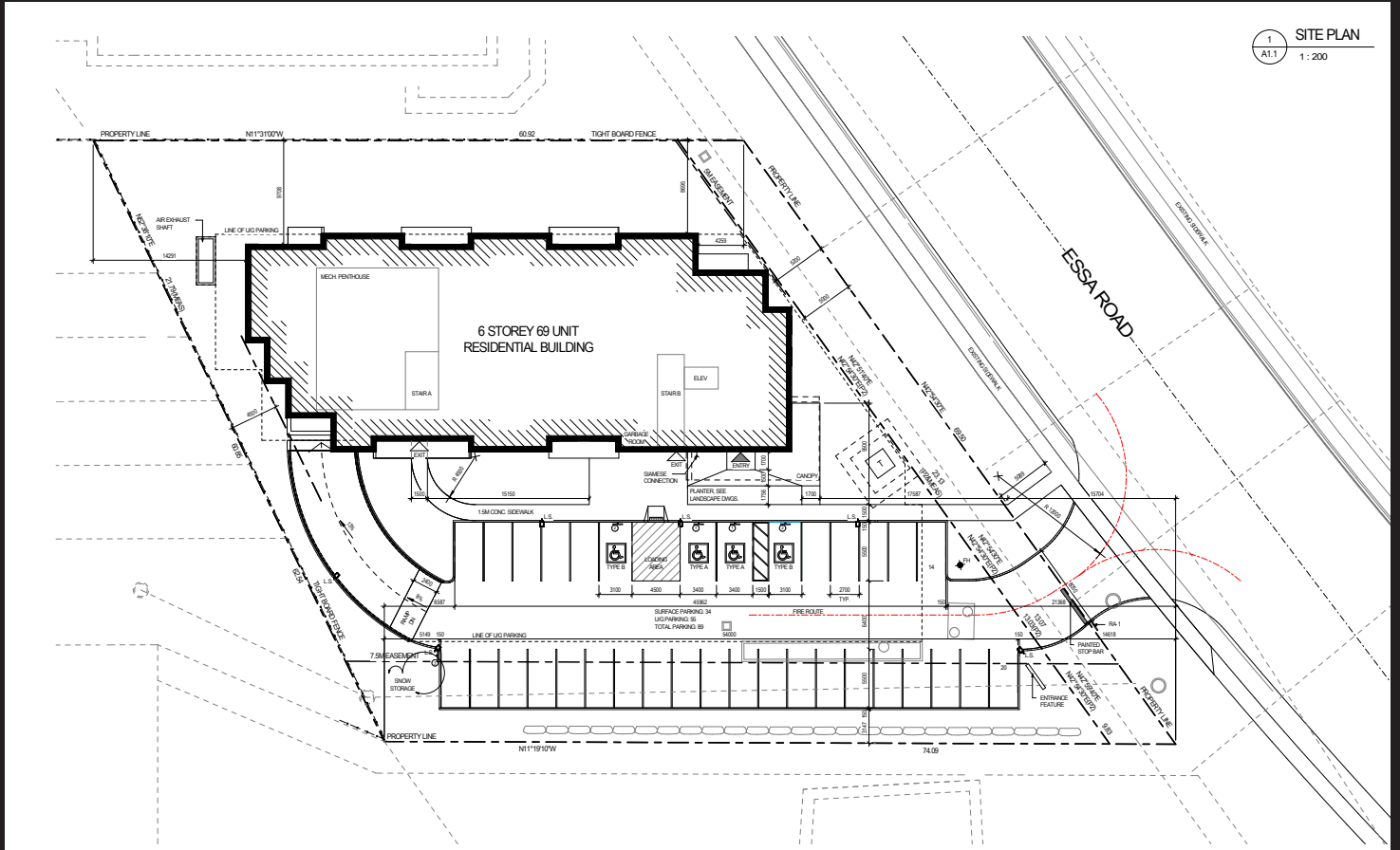
- Official Site Plan Approved
- Essa Road Frontage 69.5M
- Lot Coverage 24.2%
- Building Height 20M
- 1 Br 59 Units
- 2 Br 10 Units



ELEVATIONS



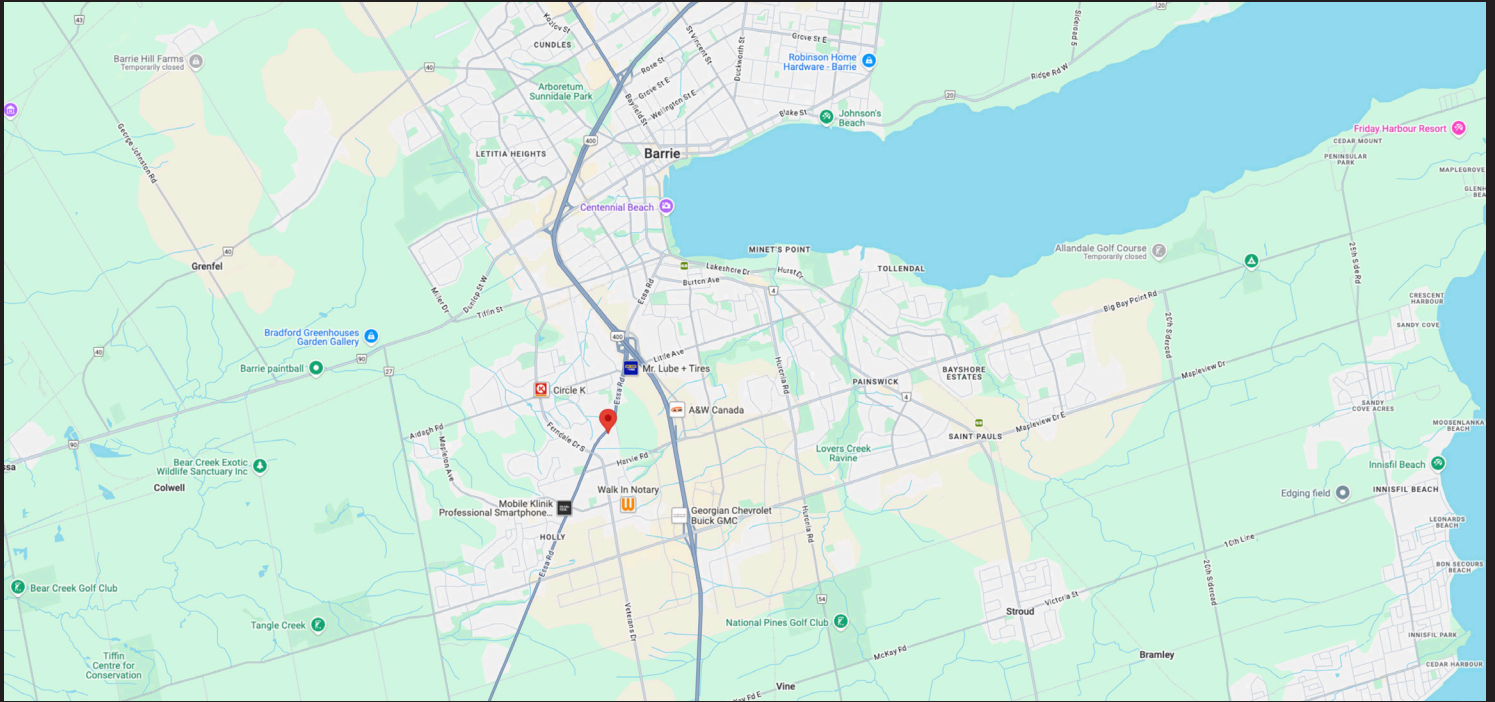
SITE PLAN



Architectural floor plan of the first floor of a building. The plan shows a large rectangular layout with a curved section on the left. The grid system is A-Z horizontally and 1-15 vertically. Key features include:

- UNDERGROUND PARKING:** Indicated by a dashed line and text "33 PARKING SPACES".
- MECH ROOM:** Mechanical room located on the right side.
- ELECTRICAL ROOM:** Electrical room located on the right side.
- Staircase and Elevator:** Located in the central part of the plan.
- Curved Section:** A curved ramp or walkway on the left side.
- Dimensions:** Various dimensions are provided for different sections of the plan.
- Note:** "T/O UNDERGROUND PARKING SLAB" and "A2.1 1:100" at the bottom left.

LOCATION MAP



Bill Iannou, Sales Representative
905.731.2000 | biannou@royalpage.ca

All offices are independently owned and operated, except those marked as indicated at rlp.ca/disclaimer. Not intended to solicit currently listed properties or buyers under contract. The above information is from sources believed reliable, however, no responsibility is assumed for the accuracy of this information.
©2023 Royal LePage Your Community Realty, Brokerage. All rights reserved.