



HARTEL COMMERCIAL REAL ESTATE

Strategic Real Estate Services

71 Carver Road - Unit 91-E1

West Plymouth Square

Plymouth, MA

Leasing Opportunity - \$16/SF NNN



- * **7,700± SF SPACE AVAILABLE - ADJACENT TO DOLLAR TREE**
- * **ACROSS FROM OCEAN STATE JOB LOT, PAPA GINO'S, AND EASTERN BANK**
 - * **LOCATED JUST OFF BUSY RTE'S 3 AND 44**
 - * **YEAR ROUND ACTIVITY IN THIS TRI PLAZA**

Long Term Leases - Available



HARTEL COMMERCIAL REAL ESTATE

230 Jones Road
Suite 6
Falmouth MA 02540

40 Willard Street
Suite 207
Quincy MA 02169

Greg Hartel
617-256-3169
Greg@HartelRealty.com

Main Office
508-444-0172
www.HartelRealty.com



HARTEL COMMERCIAL REAL ESTATE

Strategic Real Estate Services

Property Detail

- 7,700± SF Available Space
- \$16/SF NNN (NNN approximately \$5/SF)
- Separate Private Entrance
- Display Windows and Bright Natural Light
- Large Open Space
- One Private Bath
- Parking on-site



HARTEL COMMERCIAL REAL ESTATE

230 Jones Road
Suite 6
Falmouth MA 02540

40 Willard Street
Suite 207
Quincy MA 02169

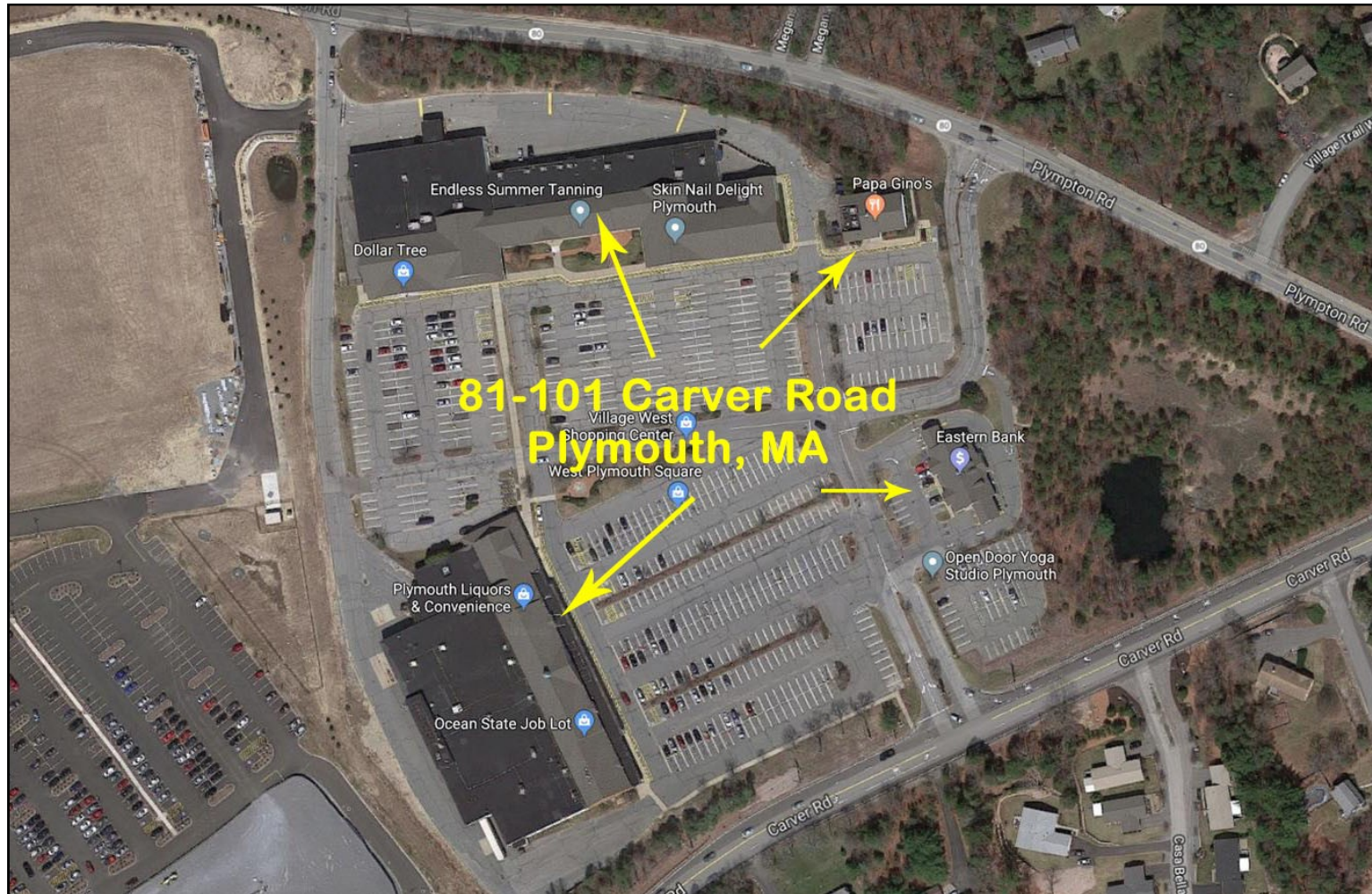
Greg Hartel
617-256-3169
Greg@HartelRealty.com

Main Office
508-444-0172
www.HartelRealty.com



HARTEL COMMERCIAL REAL ESTATE

Strategic Real Estate Services



Satellite View



HARTEL COMMERCIAL REAL ESTATE

230 Jones Road
Suite 6
Falmouth MA 02540

40 Willard Street
Suite 207
Quincy MA 02169

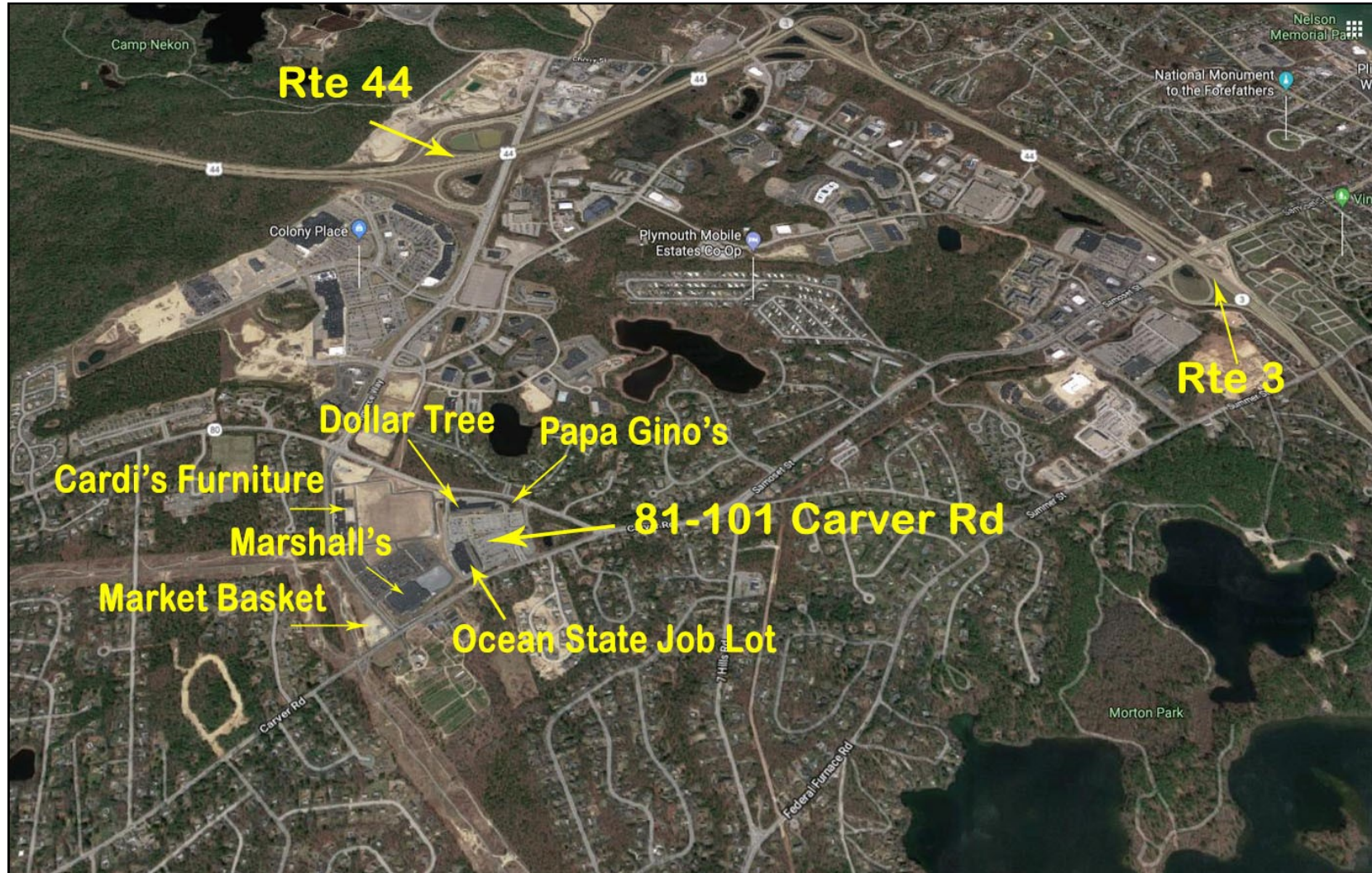
Greg Hartel
617-256-3169
Greg@HartelRealty.com

Main Office
508-444-0172
www.HartelRealty.com



HARTEL COMMERCIAL REAL ESTATE

Strategic Real Estate Services



Neighborhood View



HARTEL COMMERCIAL REAL ESTATE

230 Jones Road
Suite 6
Falmouth MA 02540

40 Willard Street
Suite 207
Quincy MA 02169

Greg Hartel
617-256-3169
Greg@HartelRealty.com

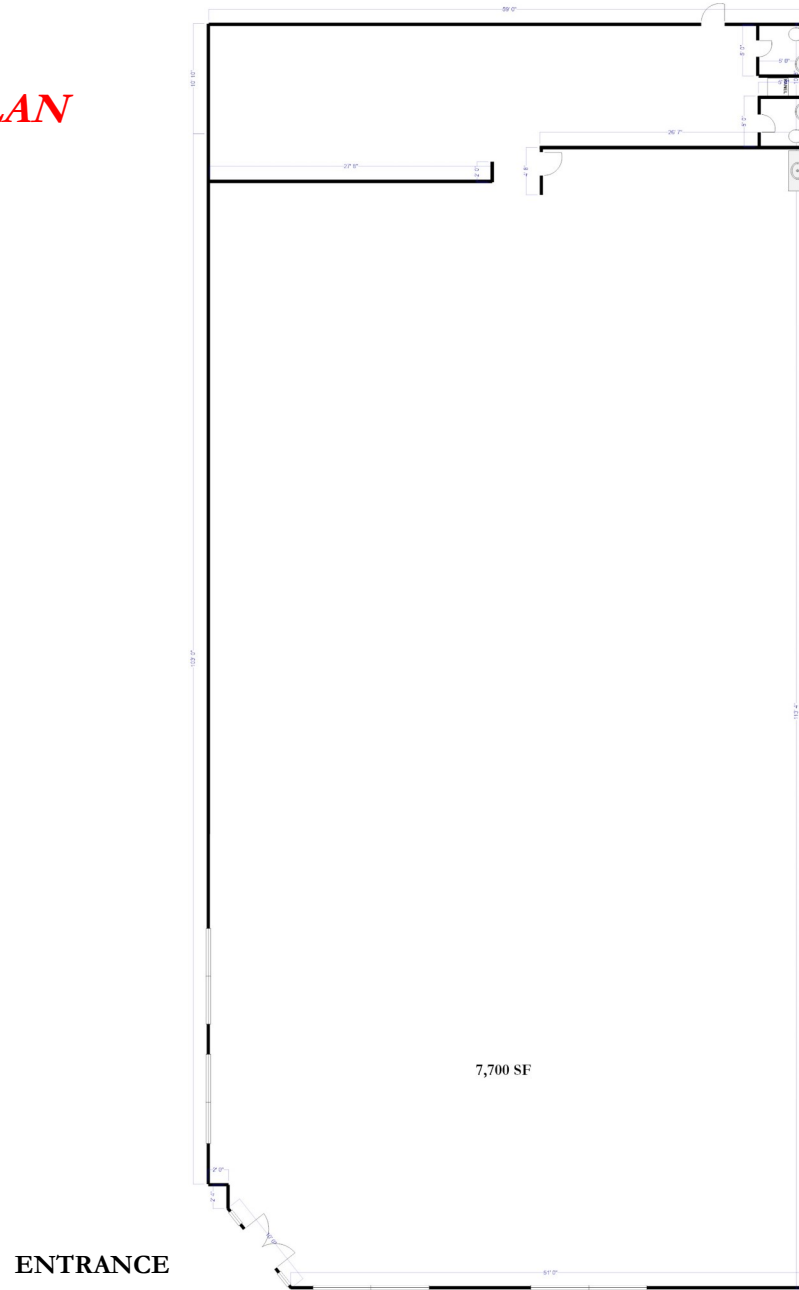
Main Office
508-444-0172
www.HartelRealty.com



HARTEL COMMERCIAL REAL ESTATE

Strategic Real Estate Services

FLOORPLAN



Assessor Map



Zoning Map



Zoned GC - General Commercial



HARTEL COMMERCIAL REAL ESTATE

Strategic Real Estate Services

91 Carver Road - Unit 91-E1 - West Plymouth Square

Plymouth, MA

The units are located in the West Plymouth Square Plaza which is located in the Plymouth business district located off Rte's 3 and 44. There are four units available in the two buildings which are located adjacent to each other. This unit has 7,700± SF of available space adjacent to the Dollar Tree and across from the Ocean State Job Lot, Papa Gino's and Eastern Bank. Location is high visibility and heavily traveled in this year round area. Complimentary businesses are located in the immediate neighborhood.

Long Term Leases - Available.

