

100 SEVENTH AVENUE

FLAGSHIP BANKING OPPORTUNITY

PARK SLOPE | BROOKLYN



JEFFREY KESSLER

Licensed Associate Real Estate Broker

O 718.840.2000 | M 914.391.7689

jeffrey.kessler@elliman.com

 **Douglas Elliman**
Commercial



\$147,880

AVERAGE HOUSEHOLD INCOME

571,497

POPULATION WITHIN 2 MILES

\$117,182

MEDIAN HOUSEHOLD INCOME

\$7.55B

ANNUAL CONSUMER SPENDING

\$3.278B

FDIC-REPORTED BRANCH DEPOSITS

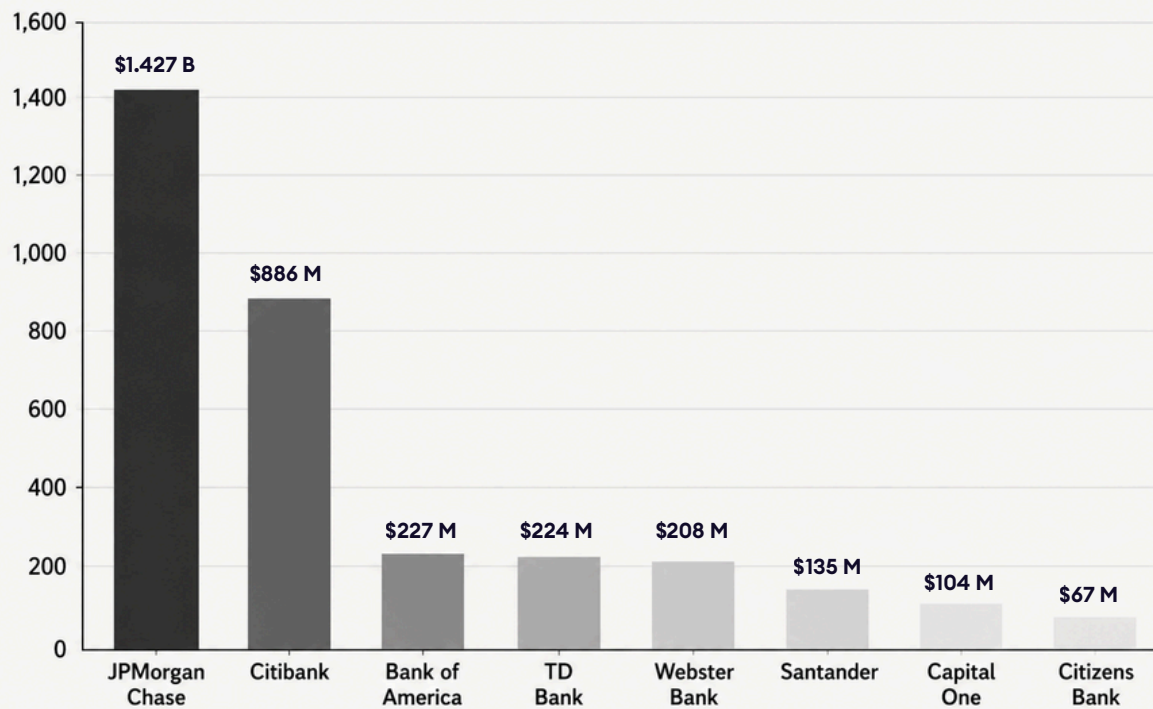
One of Brooklyn's Most Affluent Consumer Markets

Park Slope is one of New York City's most established residential neighborhoods, characterized by high household incomes, strong consumer spending, significant branch deposits, and a dense concentration of professional households.

\$3.278 Billion in FDIC-Reported Branch Deposits in Zip Code 11215

The concentration of branch deposits within ZIP Code 11215 demonstrates the strength of Park Slope as a retail banking, wealth management, and financial services market.

Largest Branch Deposits in Zip Code 11215:



FDIC Summary of Deposits (SOD), June 30, 2025.



Established Banking Corridor

Major national and regional financial institutions have established a significant presence within the immediate trade area, validating Park Slope as one of Brooklyn's premier banking corridors.

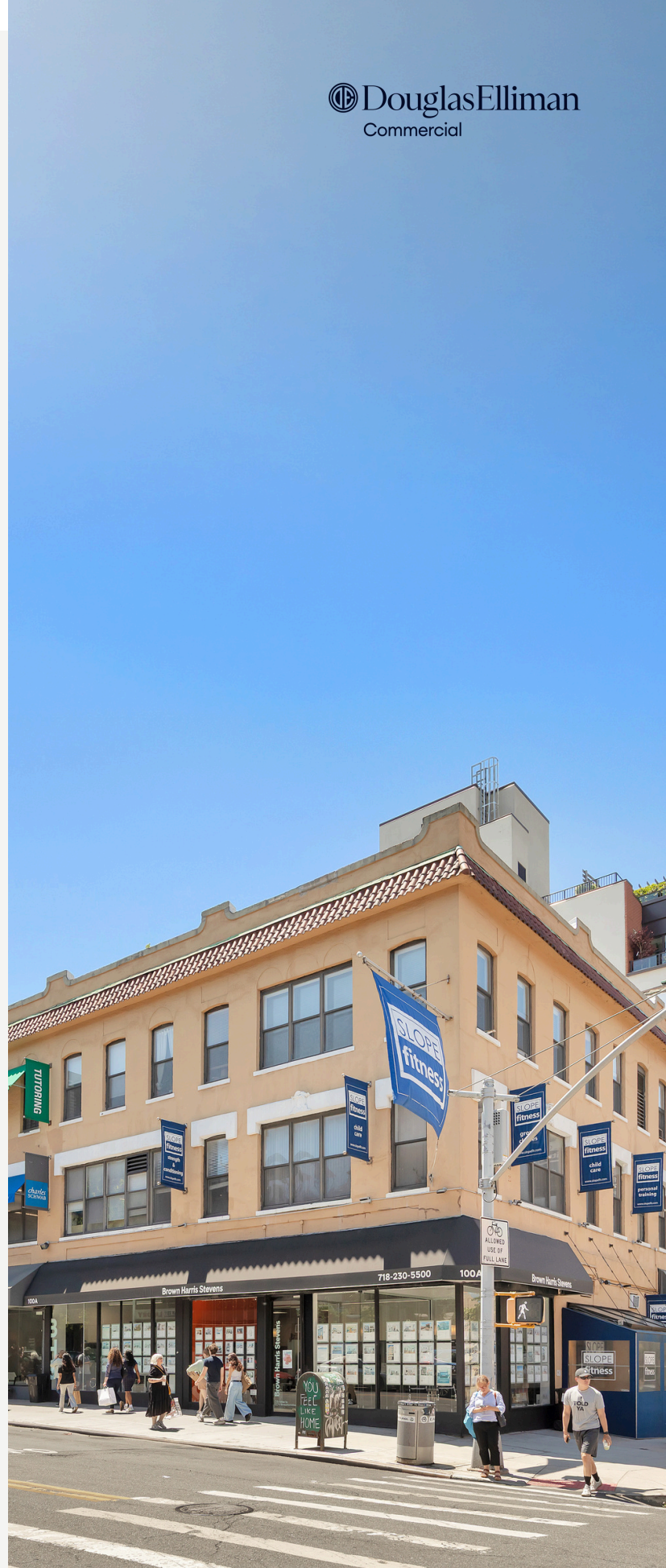


A Rare Flagship Opportunity

Property Highlights:

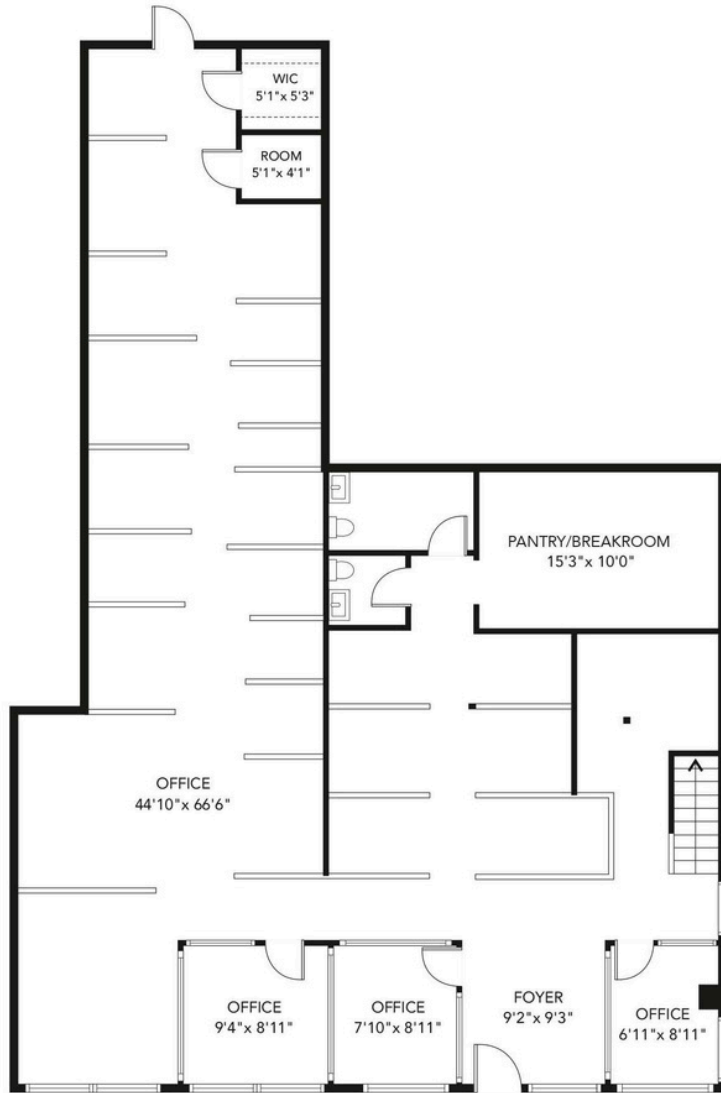
- 2,300 SF Ground Floor
- 700 SF Mezzanine
- 80' Wraparound Frontage
- Signalized Corner
- Former Brown Harris Stevens Flagship
- Immediate Possession
- Access to Union Street and Grand Army Plaza Subway Stations
- Exceptional Visibility

100 7th Avenue offers a rare opportunity to establish a flagship banking, wealth management, or financial services presence at one of Park Slope's most recognizable intersections.



Floor Plan

100 7th Avenue | Park Slope, Brooklyn



GROUND FLOOR



MEZZANINE

Renderings and floor plans are intended only as a general reference. Features, materials, finishes, layout and actual measurements of unit may be different than shown.

JEFFREY KESSLER

Licensed Associate Real Estate Broker

○ 718.840.2000 | M 914.391.7689

jeffrey.kessler@elliman.com

