



31 N. 2ND STREET

±872 SF - ±10,622 SF RETAIL/MEDICAL/OFFICE SPACES AVAILABLE

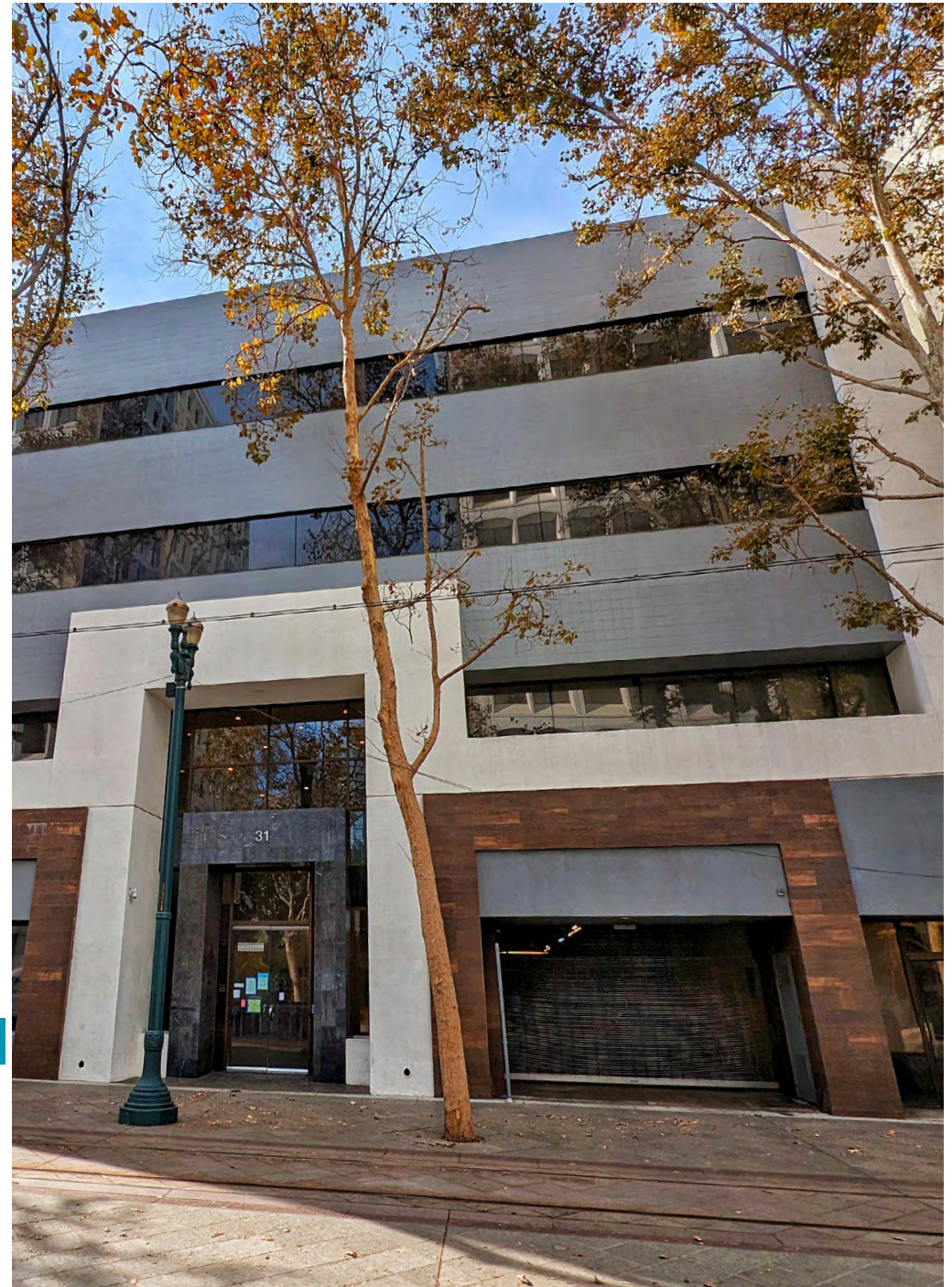
DOWNTOWN SAN JOSE

ANDREW HSU | +1 650 686 7138 | andrew.hsu@cushwake.com | LIC #02089731



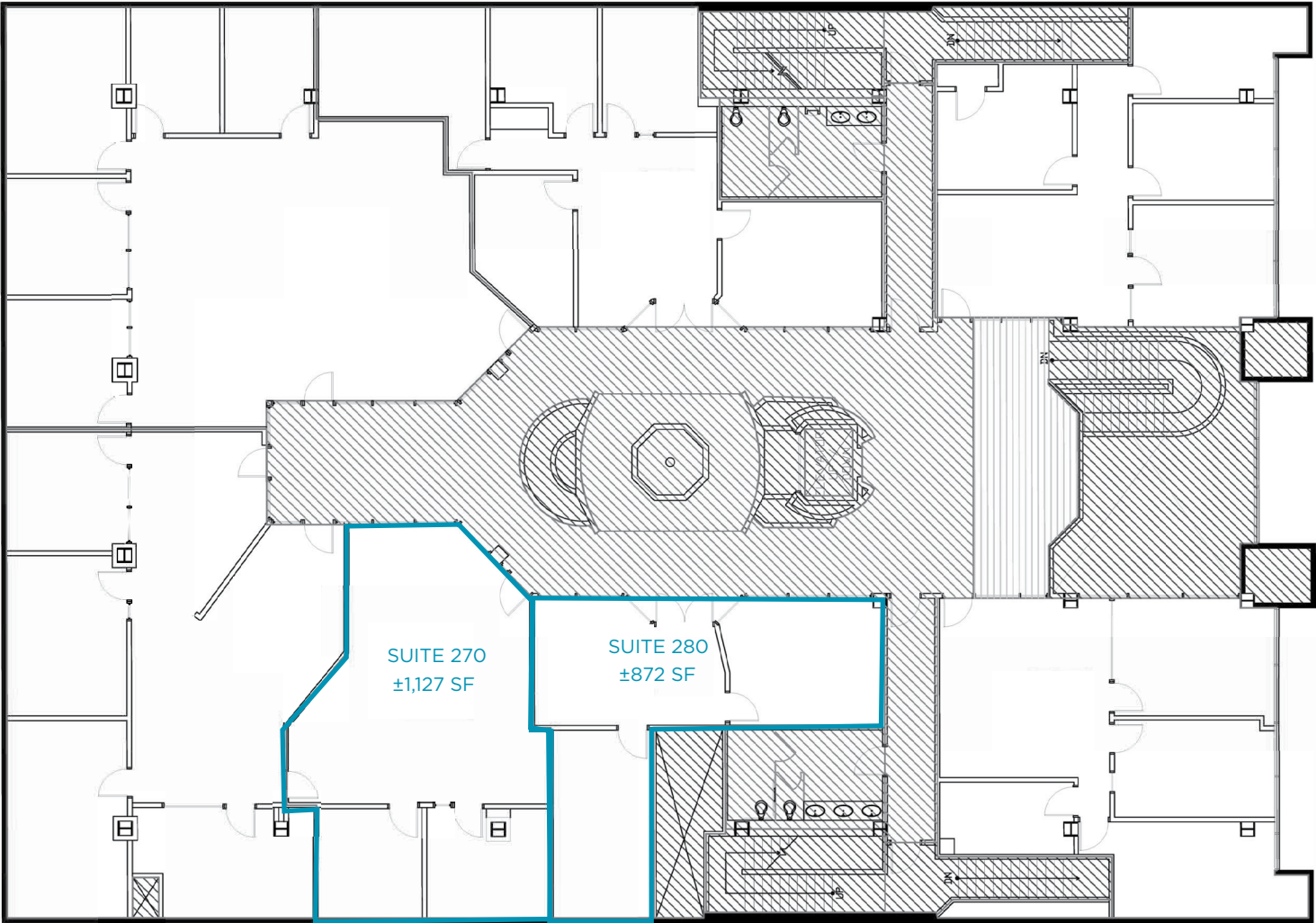
HIGHLIGHTS

- AVAILABLE SUITES:
 - Suite 280: ±872 SF
 - Suite 270: ±1,127 SF
 - Full 4th Floor: ±10,622 SF
- ±36,563 SF 4-Story Multi-Tenant Office Building
- DC Zoning Permitted Uses: Office, Medical Office, Education, Private Instruction, Financial Services, etc. (Verify Here: [LINK](#))
- Limited Assigned On-Site Parking Available in Garage
- Additional Parking Nearby
- Steps Away from VTA Light Rail



FLOOR PLANS

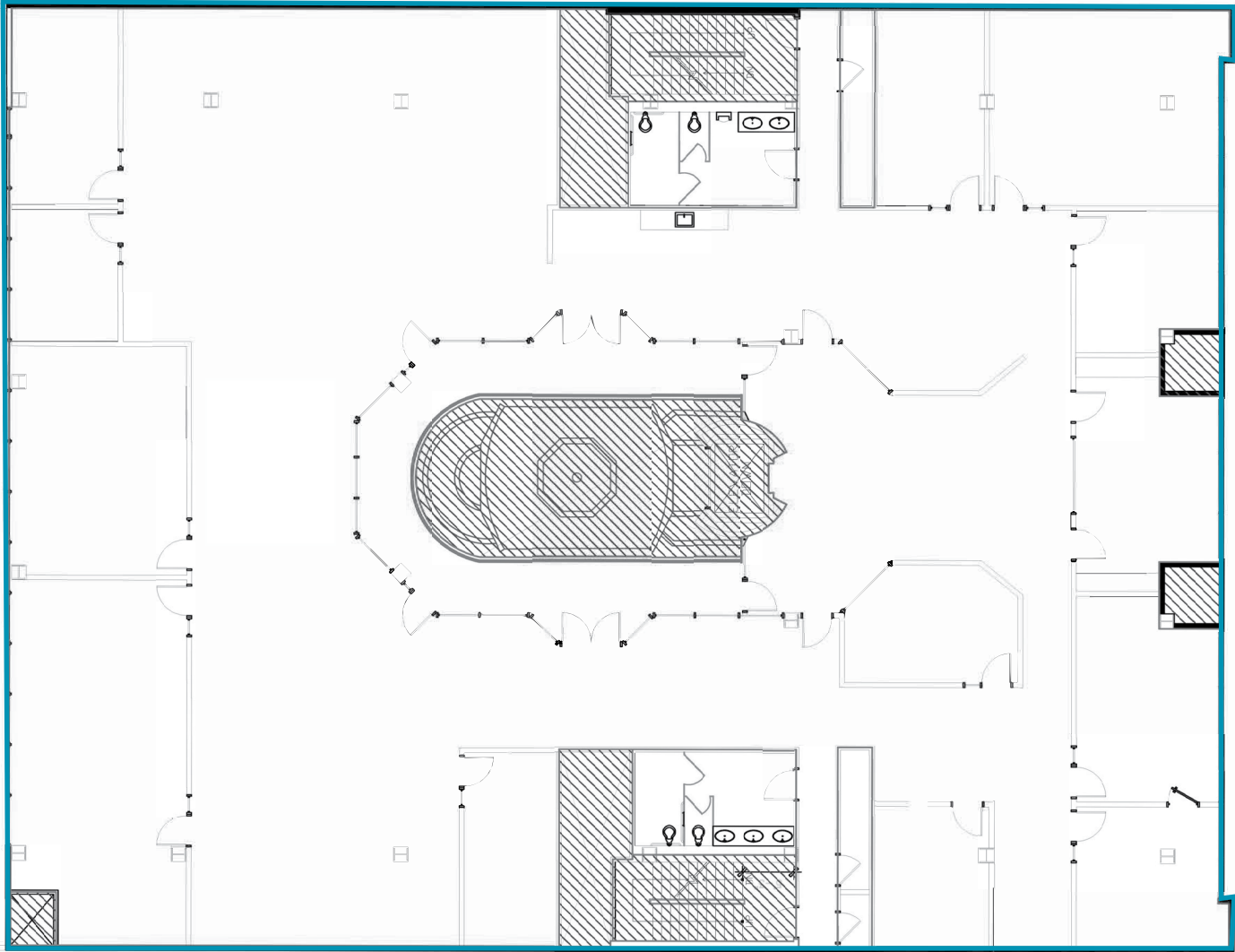
31 N. 2ND STREET / 2ND FLOOR



— AVAILABLE NOW

FLOOR PLANS

31 N. 2ND STREET / FULL 4TH FLOOR
±10,622 SF



AERIAL MAP



31 N. 2ND STREET

SAN JOSE, CA | ±872 SF - ±10,622 SF RETAIL/MEDICAL/OFFICE SPACES

ANDREW HSU
+1 650 686 7138
andrew.hsu@cushwake.com
LIC #02089731

