

FREESTANDING 1,276 SF BUILDING AVAILABLE IN TREMONT, OH!

PROFESSOR AVE. AND W 10TH ST. CLEVELAND, OH 44113

FOR LEASE



Joseph Khouri
Senior Vice President
216 658 6120
joseph.khouri@cbre.com

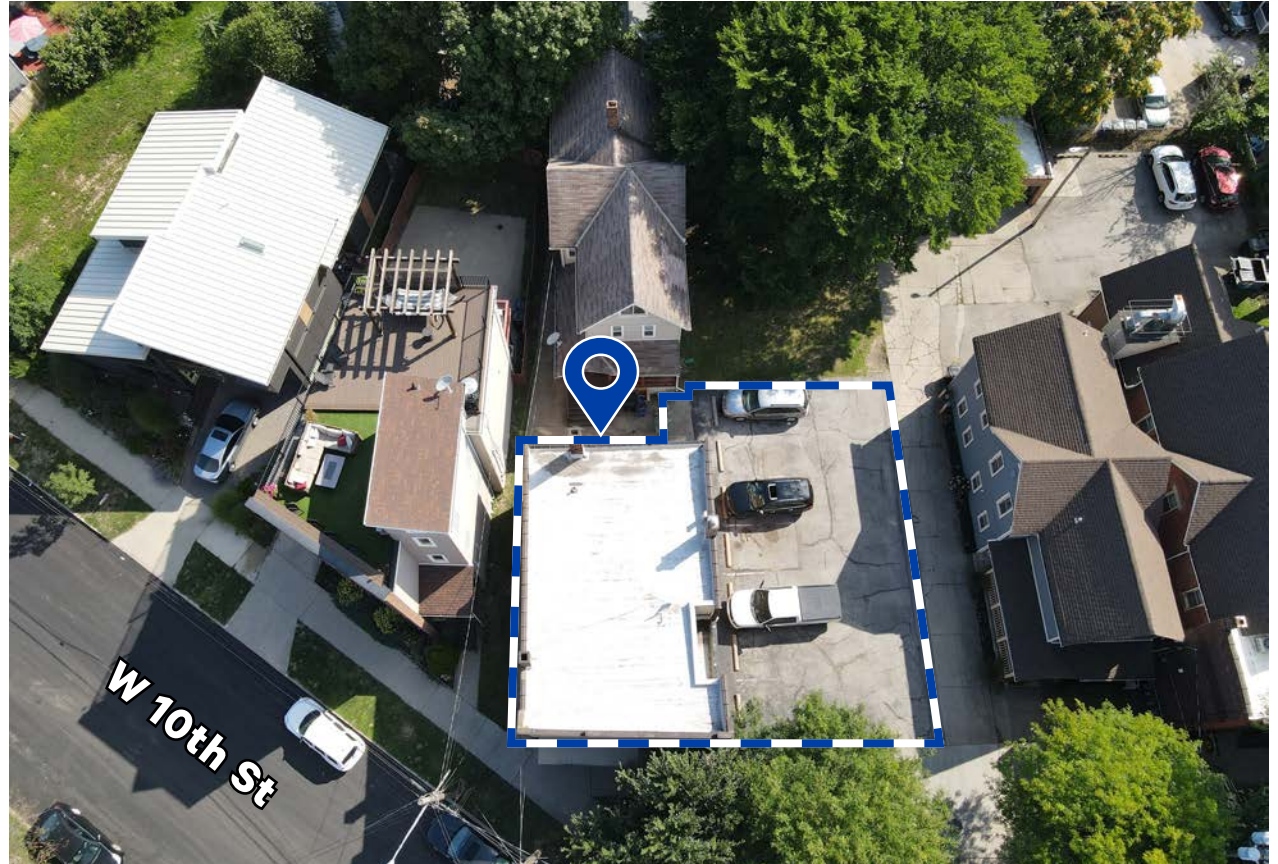
Connor Ambrose
Associate
216 535 4730
connor.ambrose@cbre.com

CBRE

THE OPPORTUNITY

2151 PROFESSOR AVENUE, CLEVELAND, OH 44113

- Freestanding 1,276 SF building available for lease in the heart of Tremont
- Located at the corner of Professor Avenue and West 10th Street, adjacent to Bar Oni, Martha On The Fly, and close to Tremont's most notable bars and restaurants and businesses such as Barrio, Hi and DRY Bowling & Beer, Dante, Coda, Ginko, Crust, The Treehouse, and many more!
- Zoned: General Commercial
- Includes 7 private parking spaces for customers
- Convenient access to I-90 (just 0.2 mi away)



Joseph Khouri

Senior Vice President
216 658 6120
joseph.khouri@cbre.com

Connor Ambrose

Associate
216 535 4730
connor.ambrose@cbre.com

2023 QUICK STATS – 1 MILE RADIUS



DAYTIME
POPULATION
13,929



POPULATION
8,012



HOUSEHOLDS
4,573



POPULATION
25 & OVER
5,913

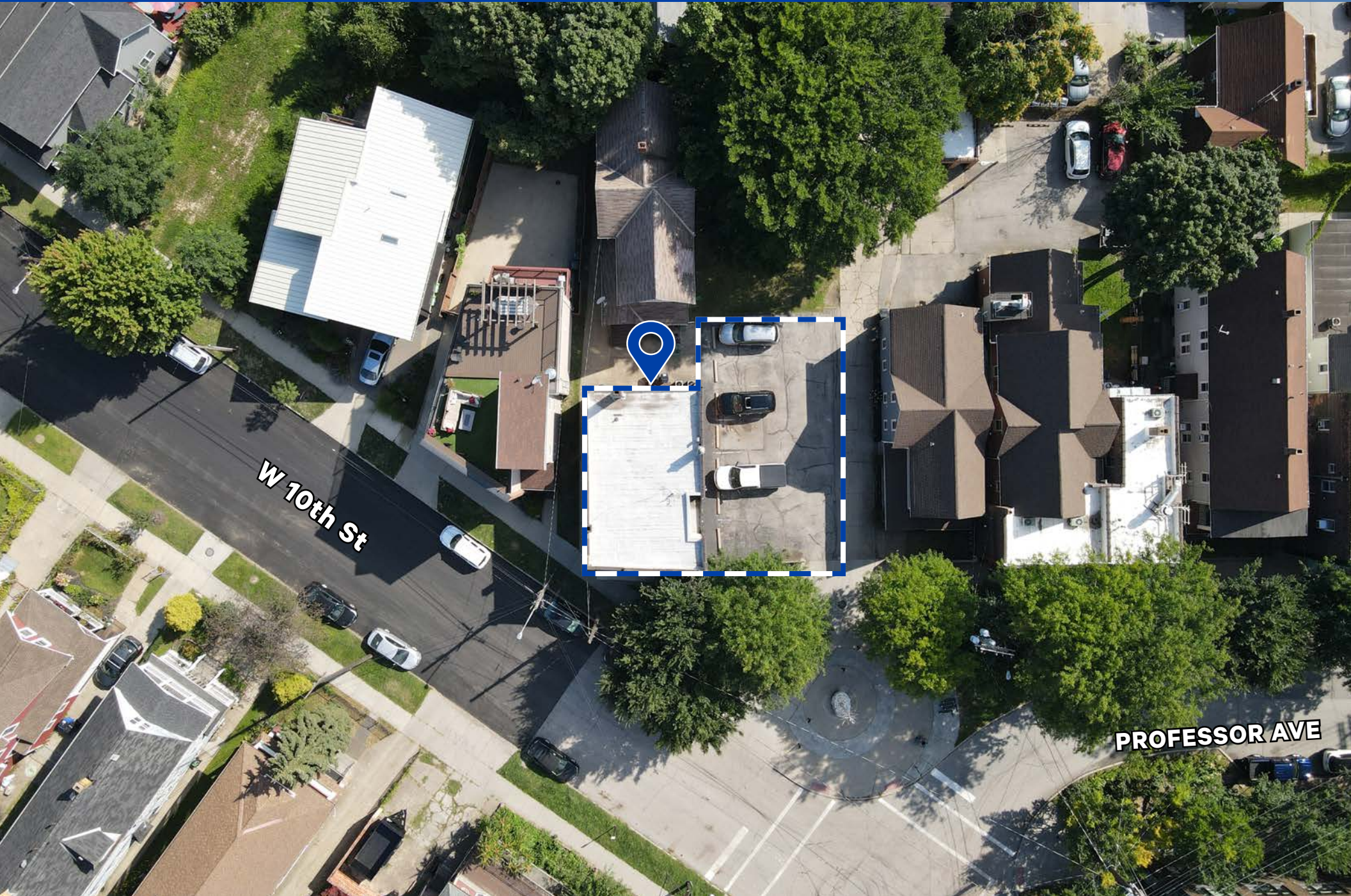


AVG. HOUSEHOLD
INCOME
\$86,435

2151 PROFESSOR AVENUE, CLEVELAND, OH 44113



PROPERTY AERIAL

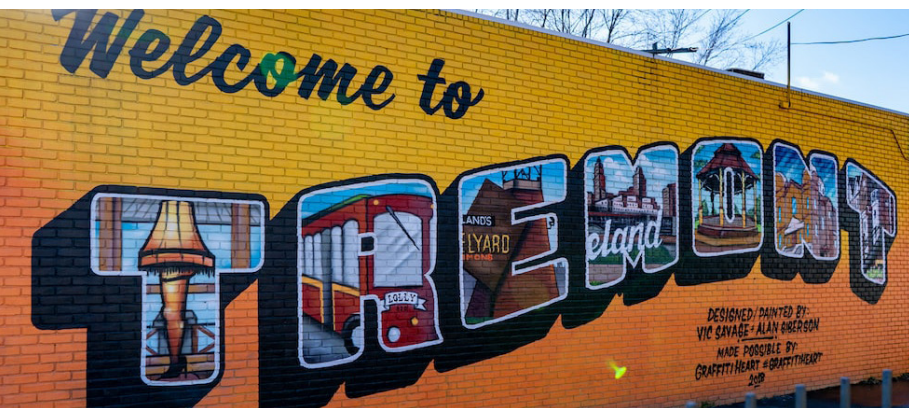


W 10th St

PROFESSOR AVE

ABOUT TREMONT

Tremont, Ohio is a charming and vibrant neighborhood that captivates visitors with its rich history and welcoming atmosphere. Nestled in the heart of Cleveland, Tremont offers a picturesque blend of historic architecture, tree-lined streets, and a thriving arts scene. Its array of locally-owned shops, cozy cafes, and trendy restaurants make it a haven for foodies and art enthusiasts alike. With its friendly community spirit and a calendar filled with cultural events, Tremont, OH, is a delightful place to explore and call home.



DEMOGRAPHICS

	1 Mile	3 Miles	5 Miles
2023 Population	8,012	105,727	283,258
2028 Projected Population	8,429	106,793	281,735
2023 Daytime Population	13,929	197,965	428,876
2023 Households	4,573	48,917	129,912
2023 Average Household Income	\$86,435	\$63,553	\$59,598
2028 Projected Average Household Income	\$98,868	\$74,914	\$69,950
2023 Median Household Income	\$53,117	\$36,865	\$37,954
Population 25 and Over	5,913	69,275	191,028

CONTACT US

Joseph Khouri

Senior Vice President
216 658 6120

joseph.khouri@cbre.com

Connor Ambrose

Associate
216 535 4730

connor.ambrose@cbre.com

© 2024 CBRE, Inc. All rights reserved. This information has been obtained from sources believed reliable, but has not been verified for accuracy or completeness. You should conduct a careful, independent investigation of the property and verify all information. Any reliance on this information is solely at your own risk. CBRE and the CBRE logo are service marks of CBRE, Inc. All other marks displayed on this document are the property of their respective owners, and the use of such logos does not imply any affiliation with or endorsement of CBRE. Photos herein are the property of their respective owners. Use of these images without the express written consent of the owner is prohibited. Licensed Real Estate Broker.

CBRE