

FOR SALE

4.65 AC YARD ZONED INDUSTRIAL

Diaz Street | Prichard



Tommy Gleason, CCIM

251.379.8285 | tgleason@cre-mobile.com



CRE
MOBILE
CRE-MOBILE.COM



PROPERTY DESCRIPTION



SIZE
4.65 AC



ZONING
Zoned: Industrial



BEST USE
Great site for container or laydown yard - only 6 minute drive to AL State Docks

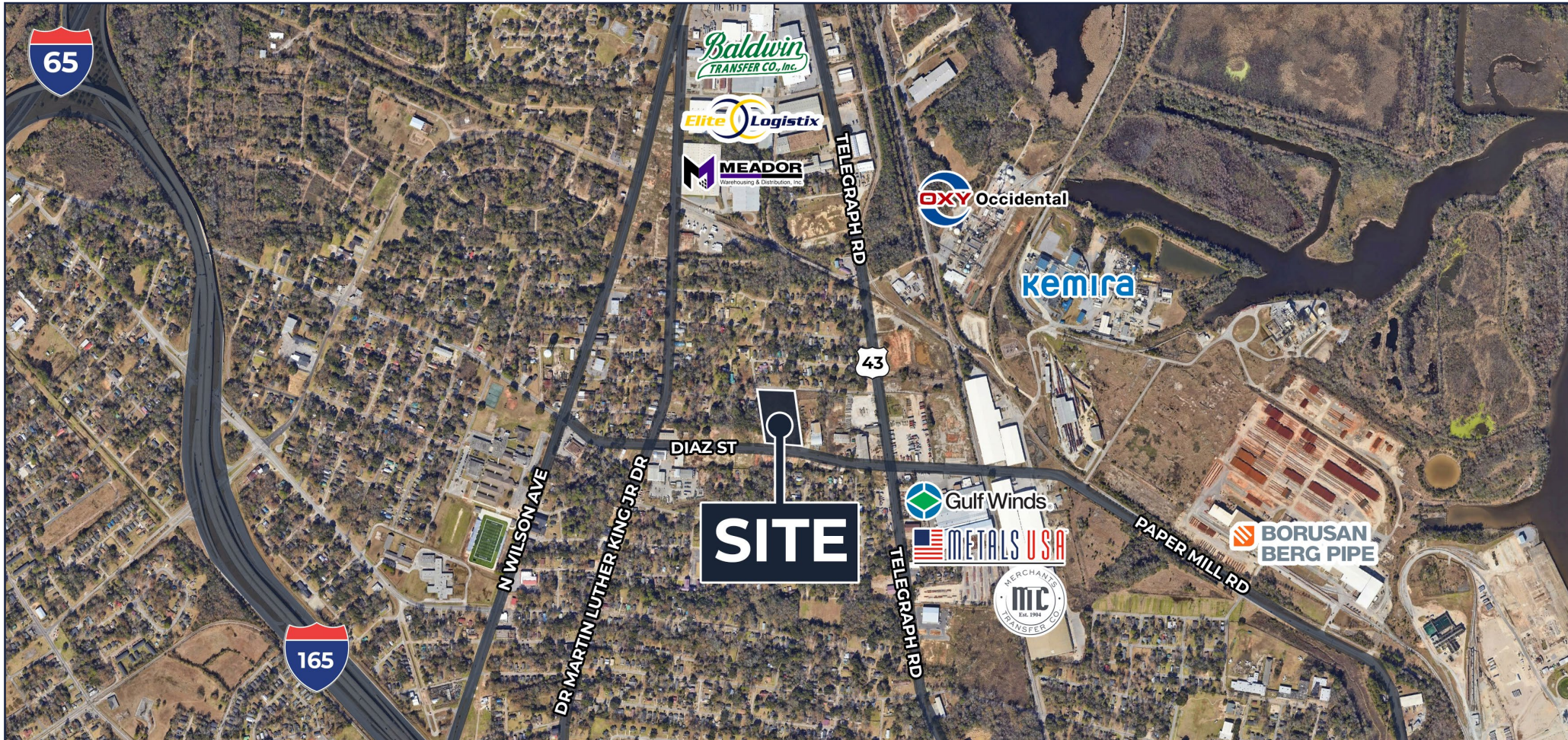


UTILITIES
All utilities are available to site



PRICE
Sale Price: \$5/SF
Lease Rate: \$4,900/Month

NO WARRANTY OR REPRESENTATION, EXPRESS OR IMPLIED, IS MADE AS TO THE ACCURACY OF THE INFORMATION CONTAINED HEREIN, AND THE SAME IS SUBMITTED SUBJECT TO ERRORS, OMISSIONS, CHANGE OF PRICE, RENTAL OR OTHER CONDITIONS, PRIOR SALE, LEASE OR FINANCING, OR WITHDRAWAL WITHOUT NOTICE, AND OF ANY SPECIAL LISTING CONDITIONS IMPOSED BY OUR PRINCIPALS. NO WARRANTIES OR REPRESENTATIONS ARE MADE AS TO THE CONDITION OF THE PROPERTY NOR ANY HAZARDS CONTAINED THEREIN ARE ANY TO BE IMPLIED.



DISTANCES TO NOTABLE LOCATIONS

I-165	0.8± miles
I-10	4± miles
I-65	1.5± miles
Aeroplex at Brookley	7± miles
Port of Mobile	3± miles
APM Terminals	5.5± miles

Distance measured as the crow flies



Central Location

Located just off of Telegraph Road. Conveniently located to I-165, I-10, I-65 and Highway 90.



Easy Access

Excellent access to Alabama State Docks and the Norfolk Southern Rail. Located in a highly-industrial area.