



# GATES PLAZA SHOPPING CENTER

12th Street & Brooklyn Avenue, Kansas City, Missouri



## LEASE RATE: \$7.50/SF NNN | 1,500 SF - 4,200 SF

### DEMOGRAPHICS

	1 mile	3 miles	5 miles
Estimated Population	14,308	103,755	214,895
Avg. Household Income	\$56,114	\$67,781	\$76,269

- Close to Downtown KC
- Near new baseball development area
- Near Gates BBQ Restaurant
- New homes two blocks away
- Highway access
- Excellent visibility



CLICK HERE TO VIEW MORE  
LISTING INFORMATION

For More Information Contact:

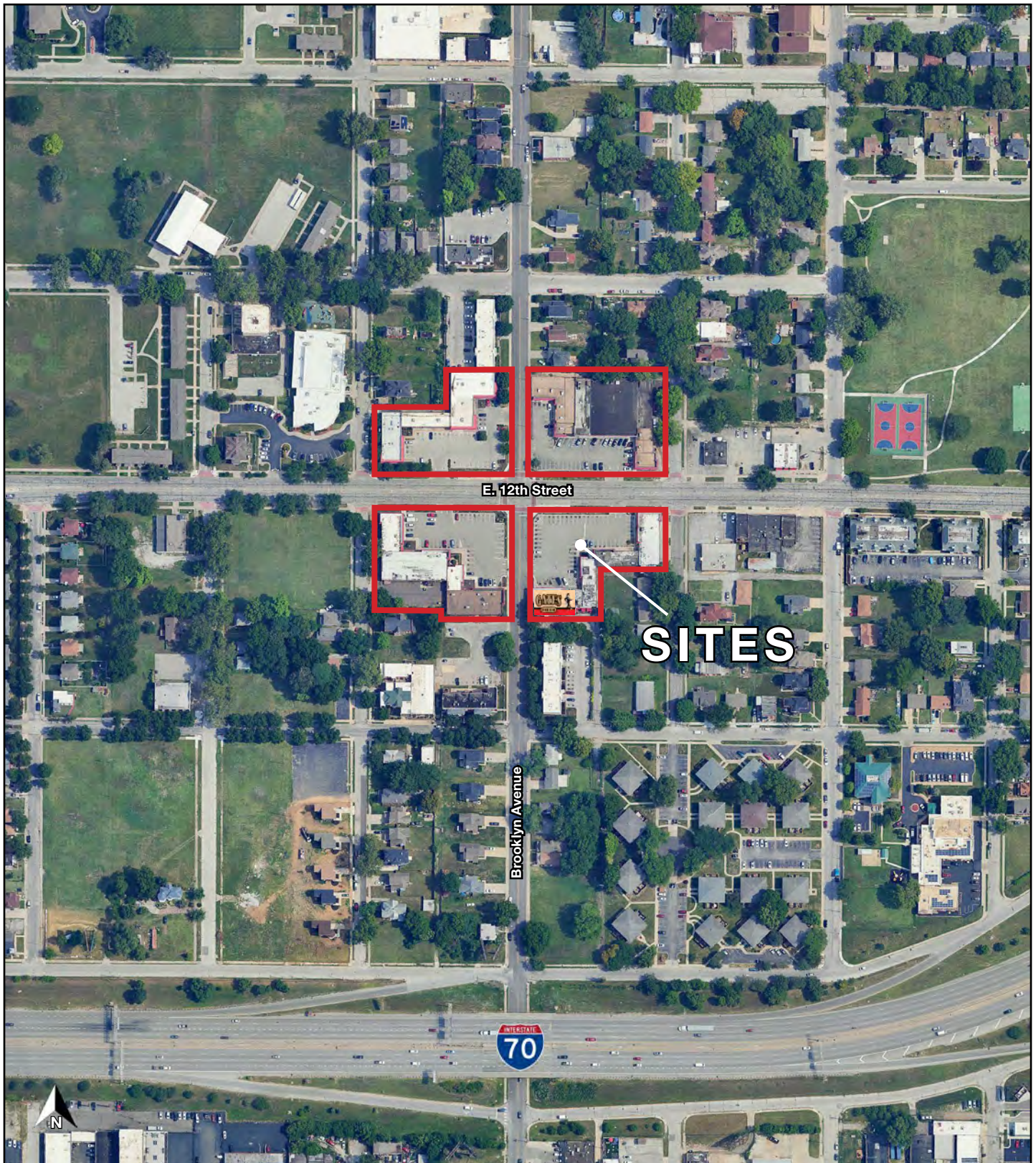
*Exclusive Agents*

BIANCA GATES | 816.412.7323 | [bgates@blockandco.com](mailto:bgates@blockandco.com)

DARREN SIEGEL | 816.412.7377 | [dsiegel@blockandco.com](mailto:dsiegel@blockandco.com)



## AERIAL



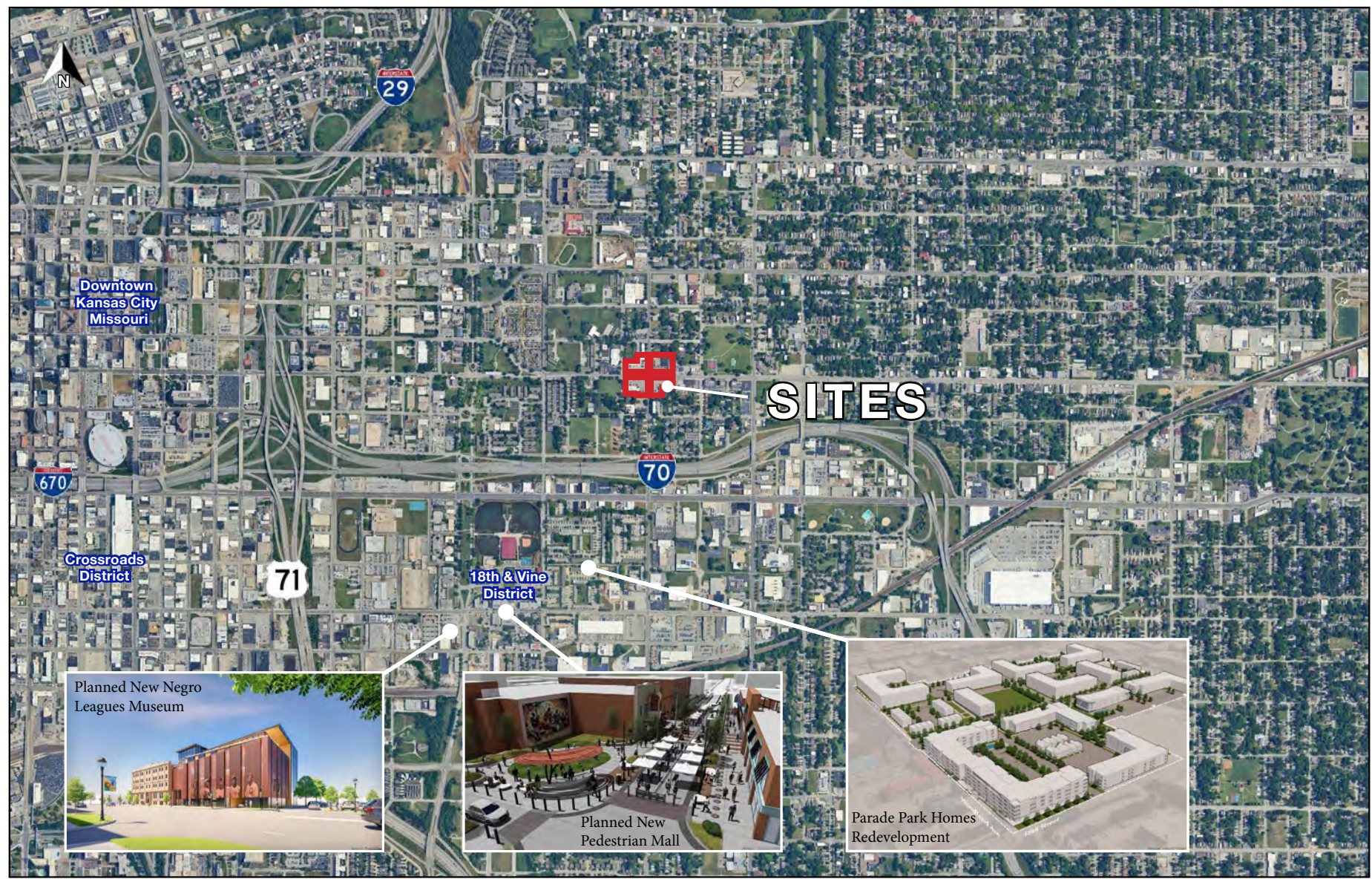




# GATES PLAZA SHOPPING CENTER

12th Street & Brooklyn Avenue, Kansas City, Missouri

AERIAL



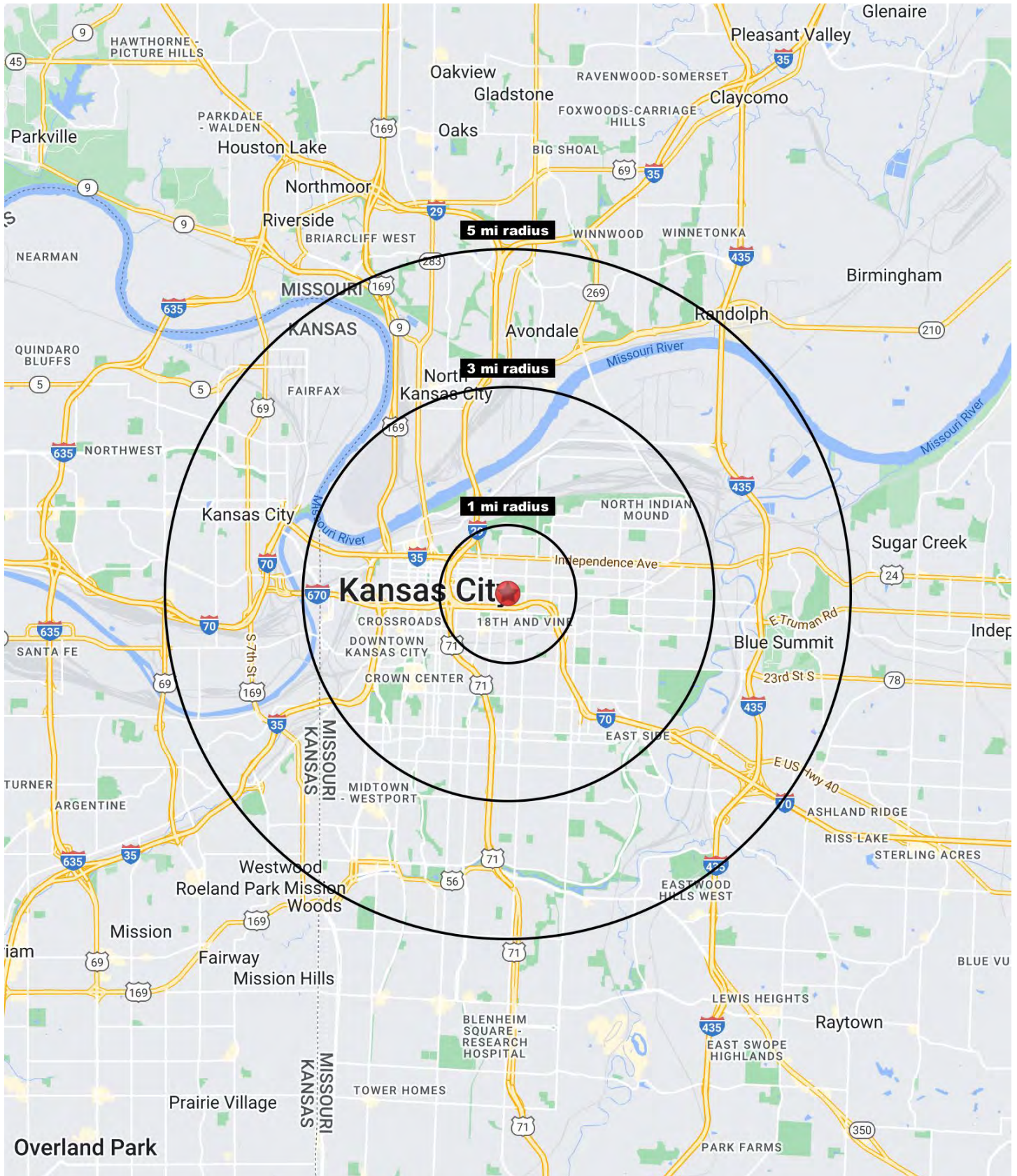






# GATES PLAZA SHOPPING CENTER

12th Street & Brooklyn Avenue, Kansas City, Missouri





# GATES PLAZA SHOPPING CENTER

## 12th Street & Brooklyn Avenue, Kansas City, Missouri

12th Street & Brooklyn Avenue Kansas City, MO 64127	1 mi radius	3 mi radius	5 mi radius
<b>Population</b>			
2023 Estimated Population	14,308	103,755	214,895
2028 Projected Population	14,627	105,426	216,023
2020 Census Population	13,767	96,200	205,437
2010 Census Population	14,549	88,636	192,672
Projected Annual Growth 2023 to 2028	0.4%	0.3%	0.1%
Historical Annual Growth 2010 to 2023	-0.1%	1.3%	0.9%
2023 Median Age	33.0	33.5	34.5
<b>Households</b>			
2023 Estimated Households	5,612	44,908	94,073
2028 Projected Households	5,660	45,818	94,542
2020 Census Households	5,366	41,920	89,976
2010 Census Households	5,521	35,562	81,684
Projected Annual Growth 2023 to 2028	0.2%	0.4%	-
Historical Annual Growth 2010 to 2023	0.1%	2.0%	1.2%
<b>Race and Ethnicity</b>			
2023 Estimated White	28.1%	37.6%	43.5%
2023 Estimated Black or African American	45.1%	35.9%	31.0%
2023 Estimated Asian or Pacific Islander	5.3%	4.3%	5.1%
2023 Estimated American Indian or Native Alaskan	1.0%	0.8%	0.7%
2023 Estimated Other Races	20.5%	21.4%	19.6%
2023 Estimated Hispanic	24.0%	25.2%	23.1%
<b>Income</b>			
2023 Estimated Average Household Income	\$56,114	\$67,781	\$76,269
2023 Estimated Median Household Income	\$39,316	\$57,517	\$58,937
2023 Estimated Per Capita Income	\$22,656	\$29,719	\$33,770
<b>Education (Age 25+)</b>			
2023 Estimated Elementary (Grade Level 0 to 8)	7.8%	7.2%	6.6%
2023 Estimated Some High School (Grade Level 9 to 11)	12.6%	9.5%	8.3%
2023 Estimated High School Graduate	29.5%	27.8%	27.9%
2023 Estimated Some College	22.4%	18.4%	18.3%
2023 Estimated Associates Degree Only	6.8%	6.5%	6.6%
2023 Estimated Bachelors Degree Only	13.1%	19.0%	19.9%
2023 Estimated Graduate Degree	7.9%	11.6%	12.4%
<b>Business</b>			
2023 Estimated Total Businesses	703	7,241	13,876
2023 Estimated Total Employees	9,926	105,565	199,072
2023 Estimated Employee Population per Business	14.1	14.6	14.3
2023 Estimated Residential Population per Business	20.4	14.3	15.5

©2024, Sites USA, Chandler, Arizona, 480-491-1112 Demographic Source: Applied Geographic Solutions 11/2023, TIGER Geography - RS1