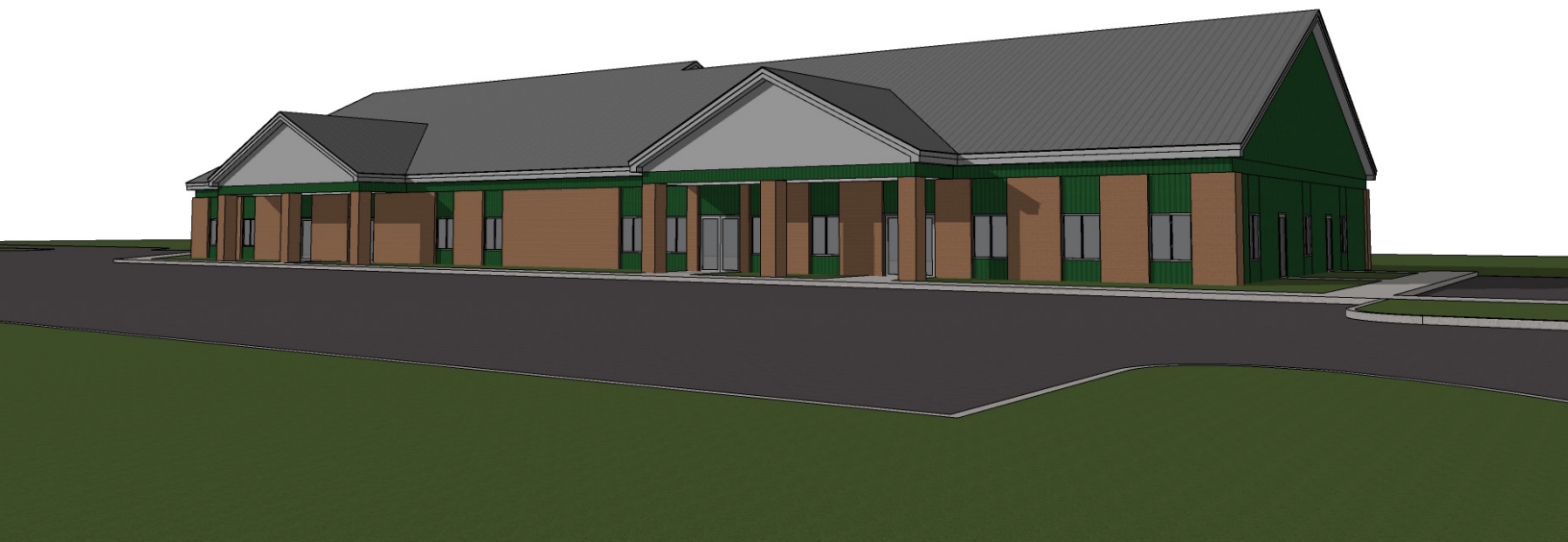


FOR LEASE | OFFICE/RETAIL BUILD-TO-SUIT

1399 LISBON STREET, LEWISTON, ME 04240



POTENTIAL BUILDING DESIGN



PROPERTY HIGHLIGHTS

- 10,000-20,000± SF office/retail
- High visibility & traffic area
- Immediate access to Maine Turnpike Exit 80
- Area businesses include Tire Warehouse, Tractor Supply, IRC, Acadia Academy, Dunkin' and many more
- See broker for pricing details



POTENTIAL BUILDING DESIGN

FOR LEASE | OFFICE/RETAIL BUILD-TO-SUIT

1399 LISBON STREET, LEWISTON, ME 04240



PROPERTY DETAILS

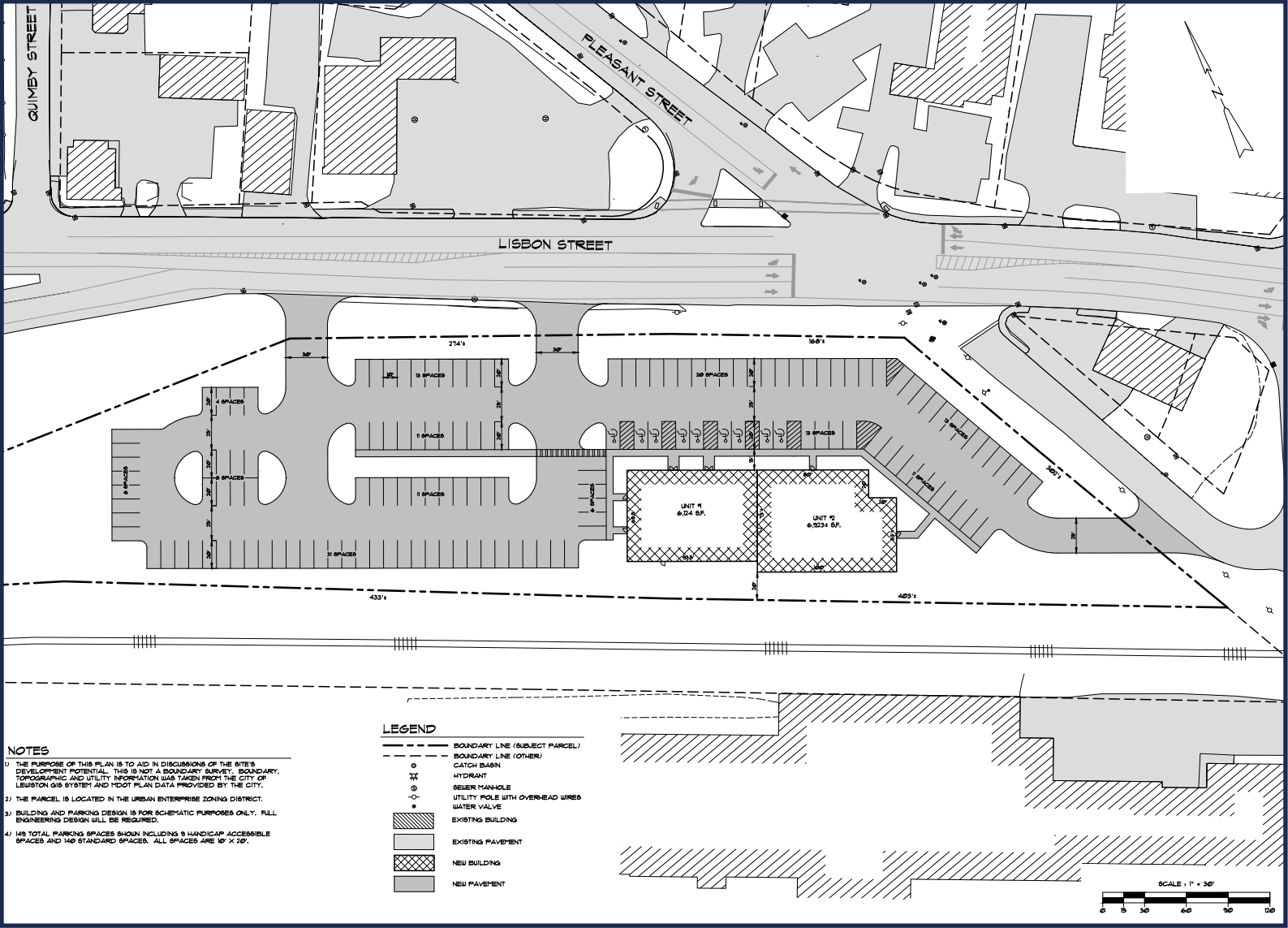
OWNER	GRE, LLC
REGISTRY OF DEEDS	Book 9560, Page 307
ASSESSOR'S REFERENCE	Map 124, Lot 4
BUILDING SIZE POSSIBLE	10,000 - 20,000± SF
LOT SIZE	2.07± AC
ZONING	HB - Highway Business District
UTILITIES	Public water/sewer
NATURAL GAS ACCESS	Yes
LEASE RATE	See Broker for Pricing Details



POTENTIAL BUILDING DESIGN

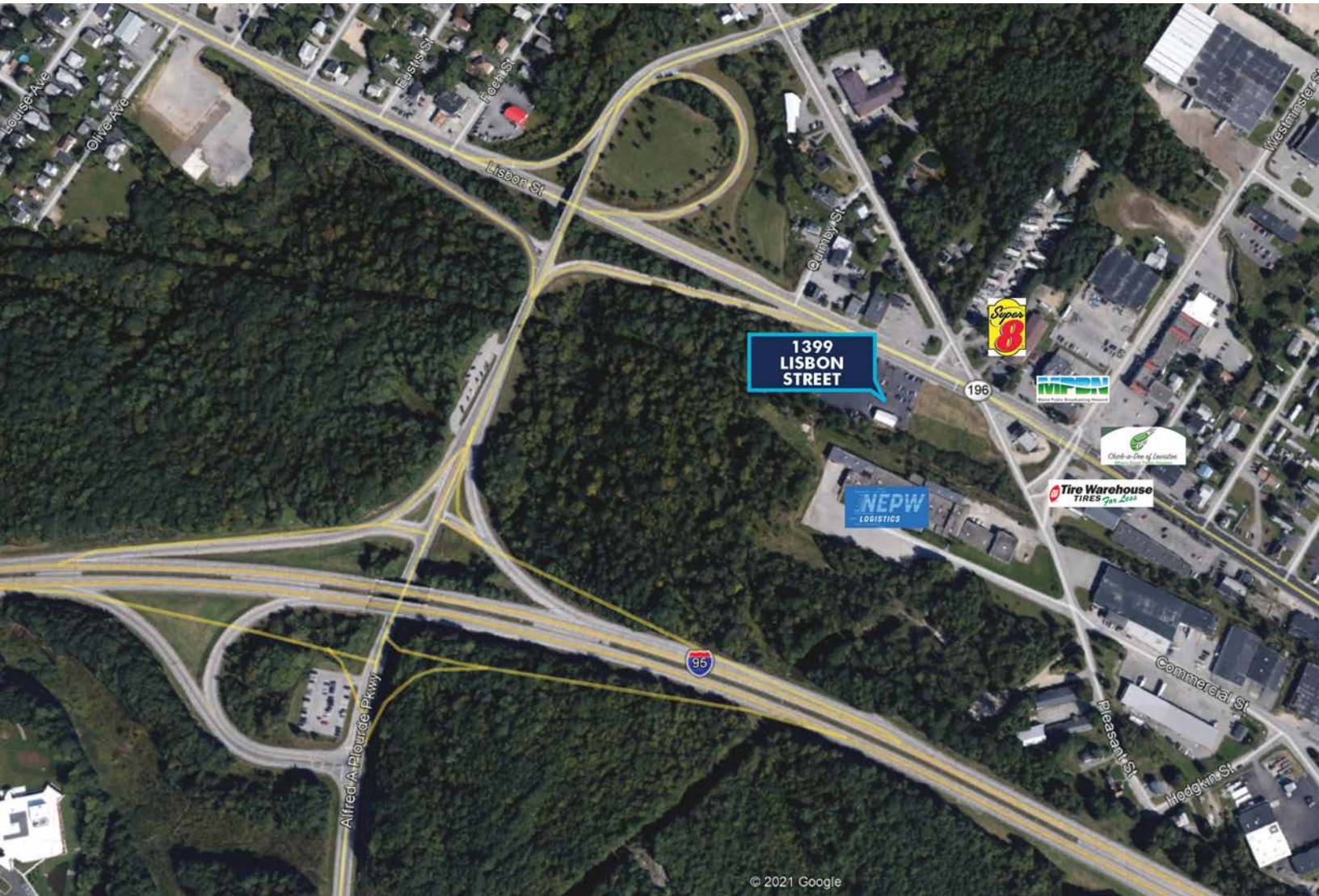


POTENTIAL SITE PLAN



FOR LEASE | OFFICE/RETAIL BUILD-TO-SUIT

1399 LISBON STREET, LEWISTON, ME 04240



CONTACT US



CHRIS PASZYC, CCIM, SIOR
Partner

+1 207.553.1709 D
+1 207.939.4147 C
cpaszyc@boulos.com



CHRIS ROMANO
Associate

+1 207.553.1717 D
+1 207.233.1792 C
cromano@boulos.com



TRIPP CLARK
Associate

+1 207.553.1729 D
+1 978.992.6004 C
tclark@boulos.com

©2026 The Boulos Company, Inc. All rights reserved. This information has been obtained from sources believed reliable, but has not been verified for accuracy or completeness. You should conduct a careful, independent investigation of the property and verify all information. Any reliance on this information is solely at your own risk. The Boulos Company and The Boulos Company logo are service marks of The Boulos Company, Inc. All other marks displayed on this document are the property of their respective owners. Photos herein are the property of their respective owners. Use of these images without the express written consent of the owner is prohibited.