

FOR LEASE | PALM BAY, FL



360 COGAN DRIVE SE | PALM BAY, FL 32909

OPPORTUNITY: 1,440 SF & 1,350 SF AVAILABLE

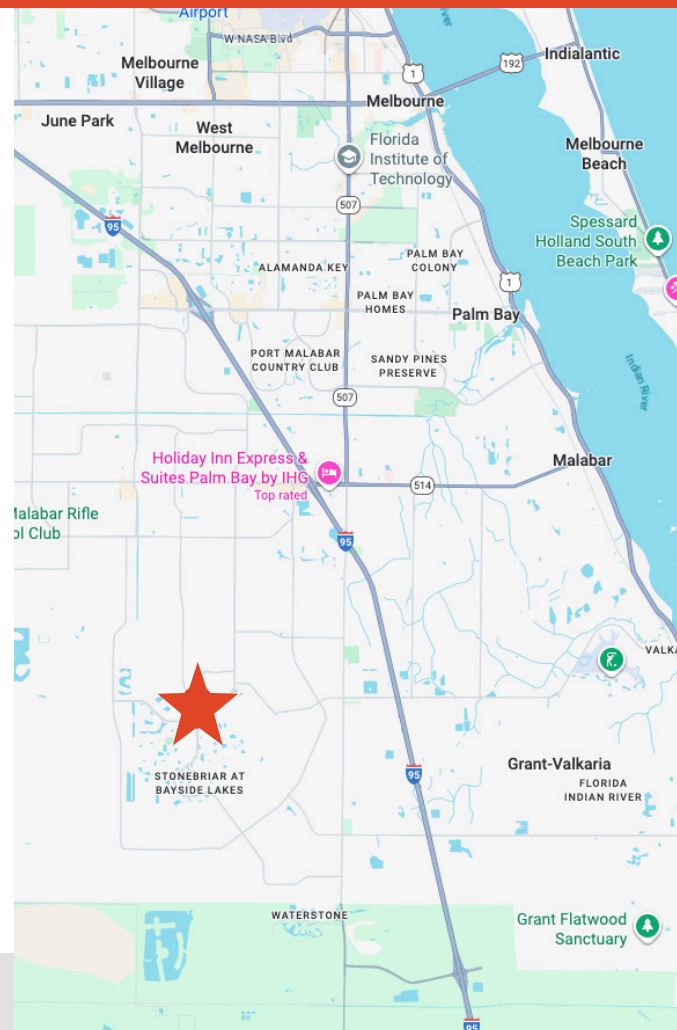
LEASE RATE: CALL FOR DETAILS

PROPERTY HIGHLIGHTS

- Direct street front
- High visibility
- Available as a build-to-suit
- Space currently in shell condition
- Call to arrange time to draft a floor plan specific to your use

DEMOGRAPHICS

	1 MILE	3 MILES	5 MILES
Population	5,668	41,296	75,817
Households	2,247	14,832	27,862
Avg. HH Income	\$75,204	\$60,827	\$59,167



JOE POIRIER | 321-537-7996 | joe@v3capital.com

The information contained herein has been given to us by the owner of the property or other sources we deem reliable. We have no reason to doubt its accuracy, but we do not guarantee it. All information should be verified prior to leasing.

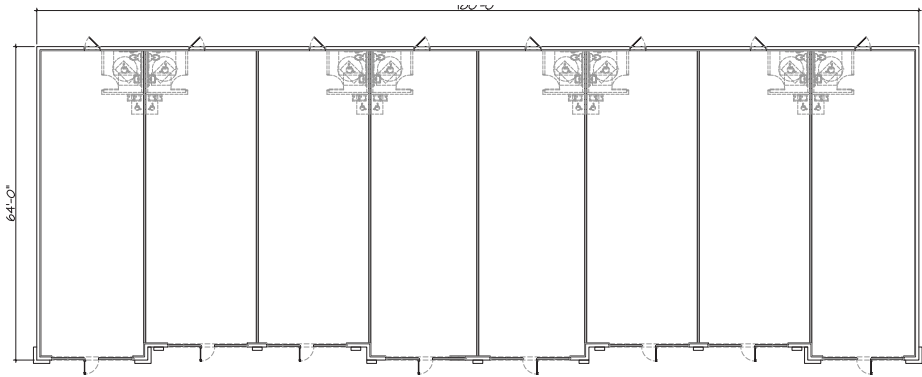


8240 Devereux Dr., 103B

Melbourne, FL 32940

407-848-1663

V3CommercialAdvisors.com



1 PRELIMINARY FLOOR PLAN
SCALE: N.T.S.



2 EAST ELEVATION
SCALE: N.T.S.

The information contained herein has been given to us by the owner of the property or other sources we deem reliable. We have no reason to doubt its accuracy, but we do not guarantee it. All information should be verified prior to leasing.



8240 Devereux Dr., 103B
Melbourne, FL 32940
407-848-1663
V3CommercialAdvisors.com

