

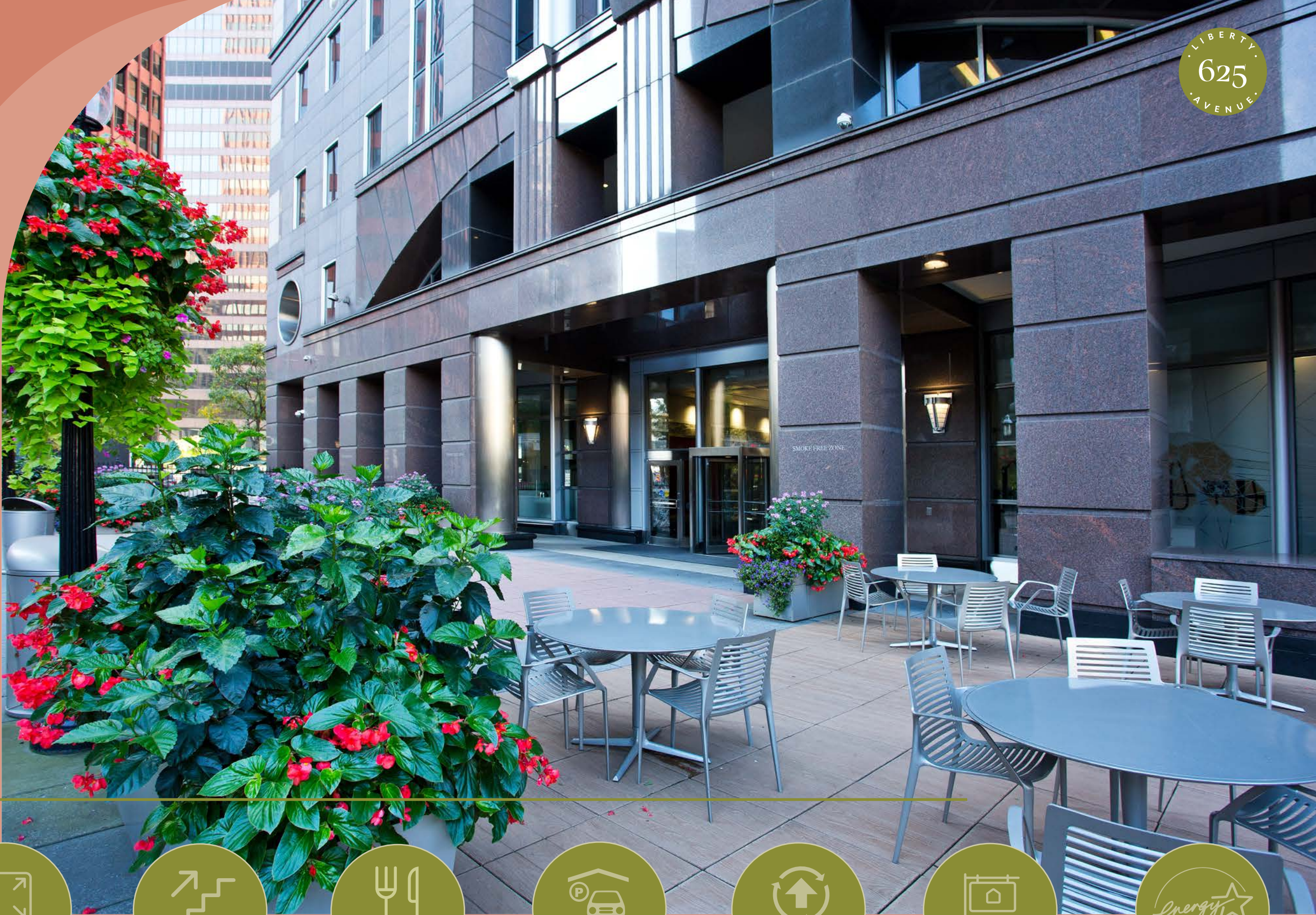


Make your Mark

Prominent signage opportunity available on the Pittsburgh skyline
ALMOST **250K** RSF OF NEWLY AVAILABLE HEADQUARTER QUALITY SPACE

An Iconic Landmark to call your own

Designed by famed New York architects, Kohn Pederson, 625 Liberty Avenue has towered over the Steel City as a statement of power and grace since 1987. Built with Dakota mahogany and Texas Rose granite and crowned with a nod to the bridges of Allegheny, every detail is intentional on this classic landmark.



615K

SF OFFICE SPACE



32

FLOORS



Dine

MORTONS AND
RUCKUS ON-SITE



110

SPACE INTEGRAL
PARKING GARAGE



\$25M

OF CAPITAL
IMPROVEMENTS



Building

NAMING RIGHTS
AVAILABLE



Energy Star®

CERTIFIED



Ruckus Café (coming summer 2025)

Step into 625 Liberty Avenue, and you will be greeted with the charm and class embodied in the polished marble finishes. The interior meets the design of the exterior; rich in details that focus on the elaborate art deco style of the building.

Best-in-class building features

Touch-free experience from entry to floor destination

Direct lobby access to integral parking garage

Interior entrances from lobby to Morton's and Ruckus

Velocity, a 4,800 SF fitness center

Secure bike room with maintenance tools

Spark, a 5,170 SF business center

Private Outdoor Plaza

24/7 staff security

Renovations of entrance and main lobby complete

SPARK

5,170 SF business center with four meeting room options.



SPARK SPARK SPARK



VELOCITY VELOCITY VELOCITY



VELOCITY

4,800 SF fitness center with full array of cardiovascular / weight equipment, secured lockers and showers with towel service.

BIKE ROOM

970 SF secure bike room with direct entrance from the building plaza and maintenance tools provided.



BIKE ROOM BIKE ROOM BIKE ROOM



EATERIES EATERIES EATERIES



EATERIES

Upscale dining available at Morton's. Freshly prepared breakfast / lunch with coffee bar at Ruckus

Superior
Amenities
for a work-life
balance

625 Liberty Avenue is equipped with high-end amenities, offering you opportunities, such as working out or grabbing a made to order lunch, without ever stepping foot outside.

Renovated & Refreshed

New entrance & lobby



Now
complete!

Your sign here

Make your mark on the Pittsburgh Skyline

YOUR PRIVATE OASIS

IN THE SKY

the 21st floor provides an +/- 8,000 SF exclusive outdoor patio and seating area offering sweeping views of the CBD, Strip District, and North Shore



5 MINS AWAY



4 MINS AWAY

PITTSBURGH
CAPITOL LIMITED

PENN

MARTIN LUTHER KING JR
EAST BUSWAY

The Centerpiece of downtown



85+
EATERIES



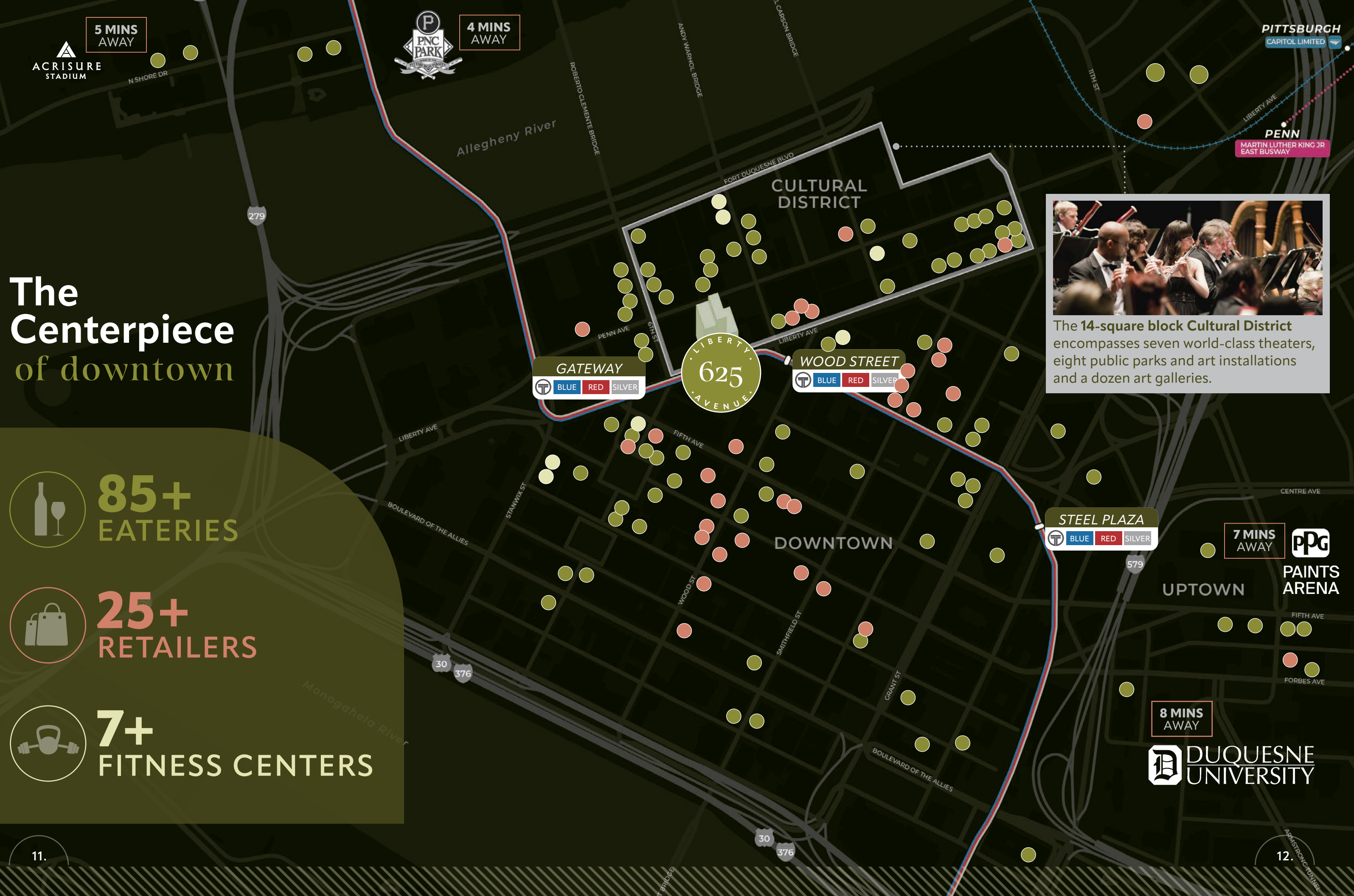
25+
RETAILERS



7+
FITNESS CENTERS



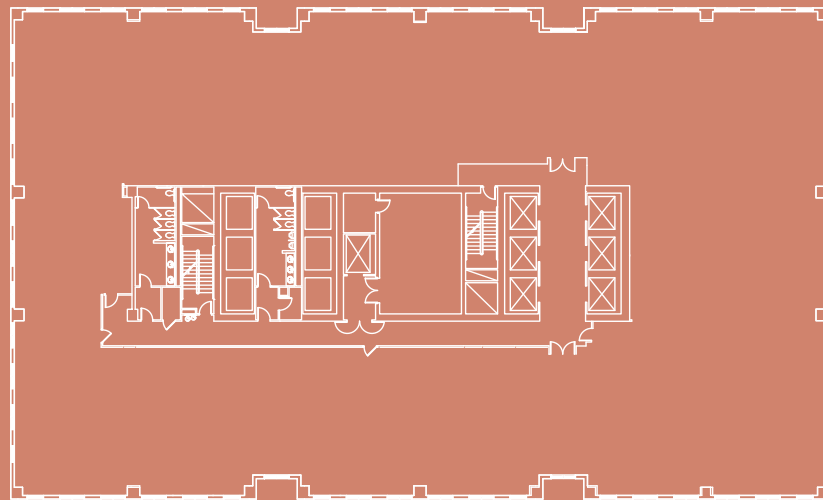
The 14-square block Cultural District encompasses seven world-class theaters, eight public parks and art installations and a dozen art galleries.



Exclusive workplace options

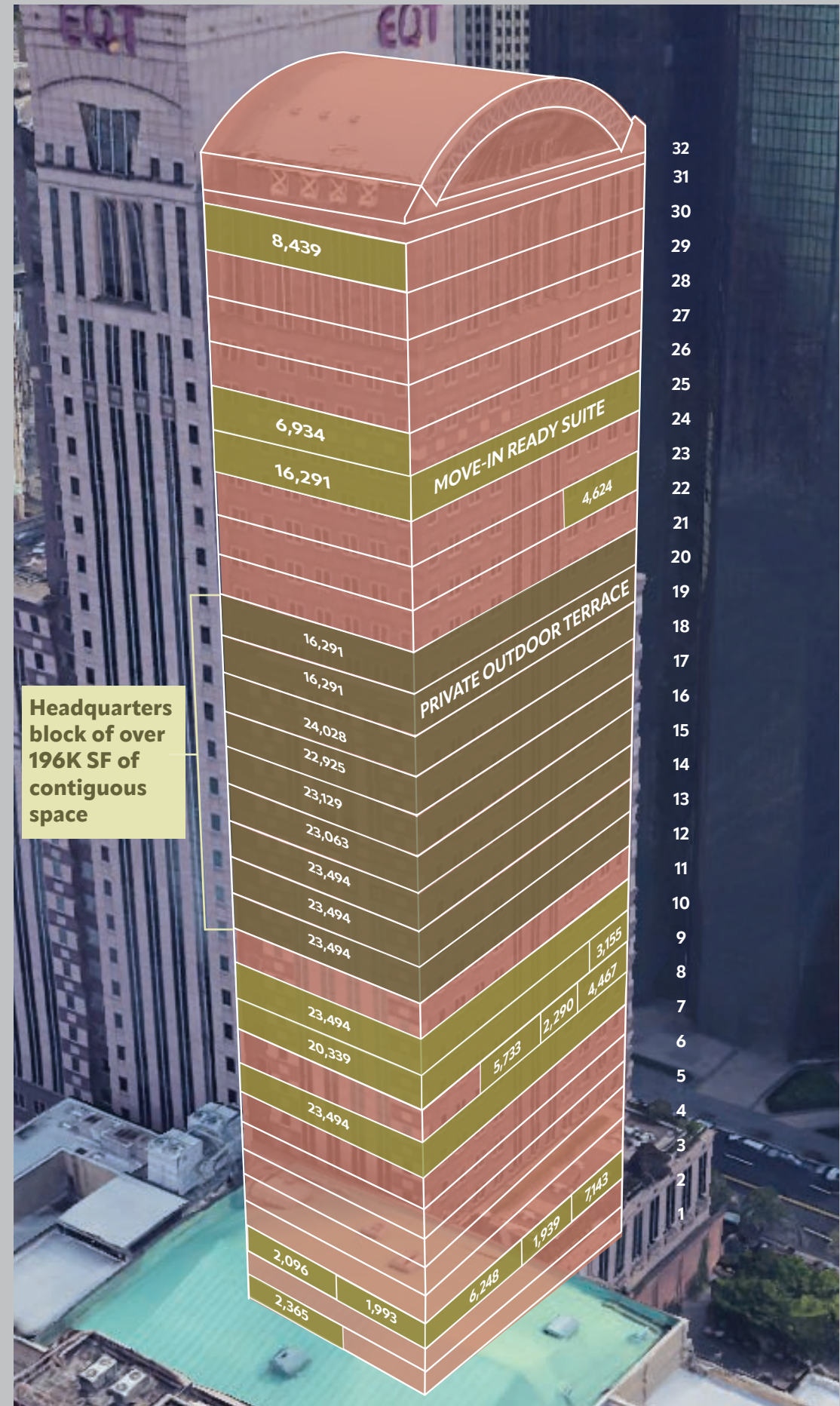
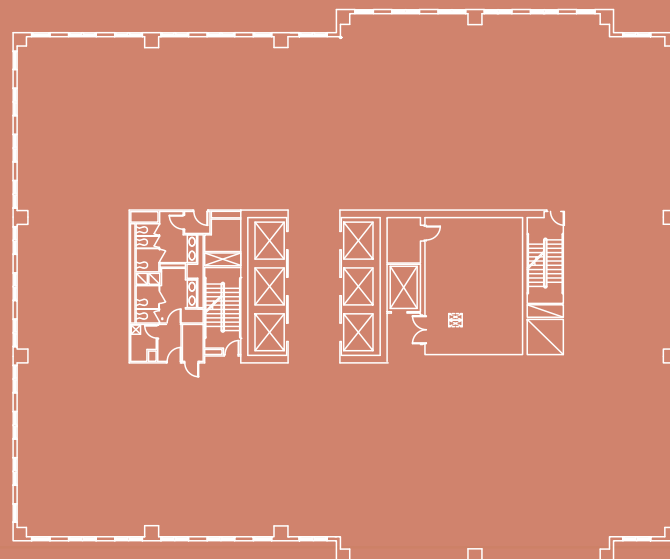
TYPICAL
LOWER LEVEL
FLOOR PLATE

~23,500 SF



TYPICAL
UPPER LEVEL
FLOOR PLATE

~16,300 SF





TRIPP MERCHANT

412.208.8231

tripp.merchant@jll.com

JACKIE BEZEK

412.208.1413

jackie.bezek@jll.com

LEASING &
MANAGEMENT BY:



OWNED BY:



About JLL

For over 200 years, JLL (NYSE: JLL), a leading global commercial real estate and investment management company, has helped clients buy, build, occupy and invest in a variety of commercial, industrial, hotel, residential and retail properties. A Fortune 500 company with annual revenue of \$20.9 billion and operations in over 80 countries around the world, our more than 103,000 employees bring the power of a global platform combined with local expertise. Driven by our purpose to shape the future of real estate for a better world, we help our clients, people and communities SEE A BRIGHTER WAYSM. JLL is the brand name, and a registered trademark, of Jones Lang LaSalle Incorporated. For further information, visit jll.com.