

# 8,530± SF TURN KEY RESTAURANT OR 1.55 AC GROUND LEASE Former Marie Callender's



**David Taxin Meacham/Oppenheimer**

Lic. #00983163

**DTaxin@moinc.net**

(408) 966-5919

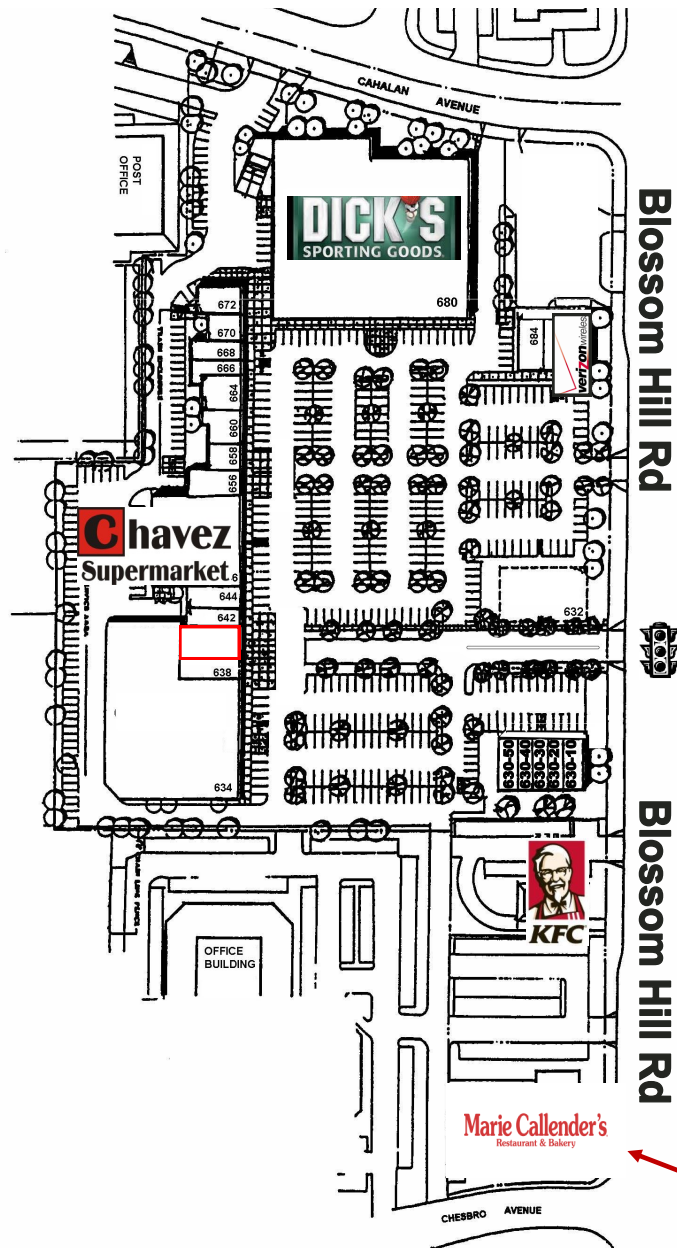
**Marie Anderson CBRE**

Lic. #00919144

**Marie.Anderson@cbre.com**

(408) 453-7468

# Sunrise Plaza • 620-690 Blossom Hill Rd, San Jose, California



## 620 — Marie Callender's 8,530± SF

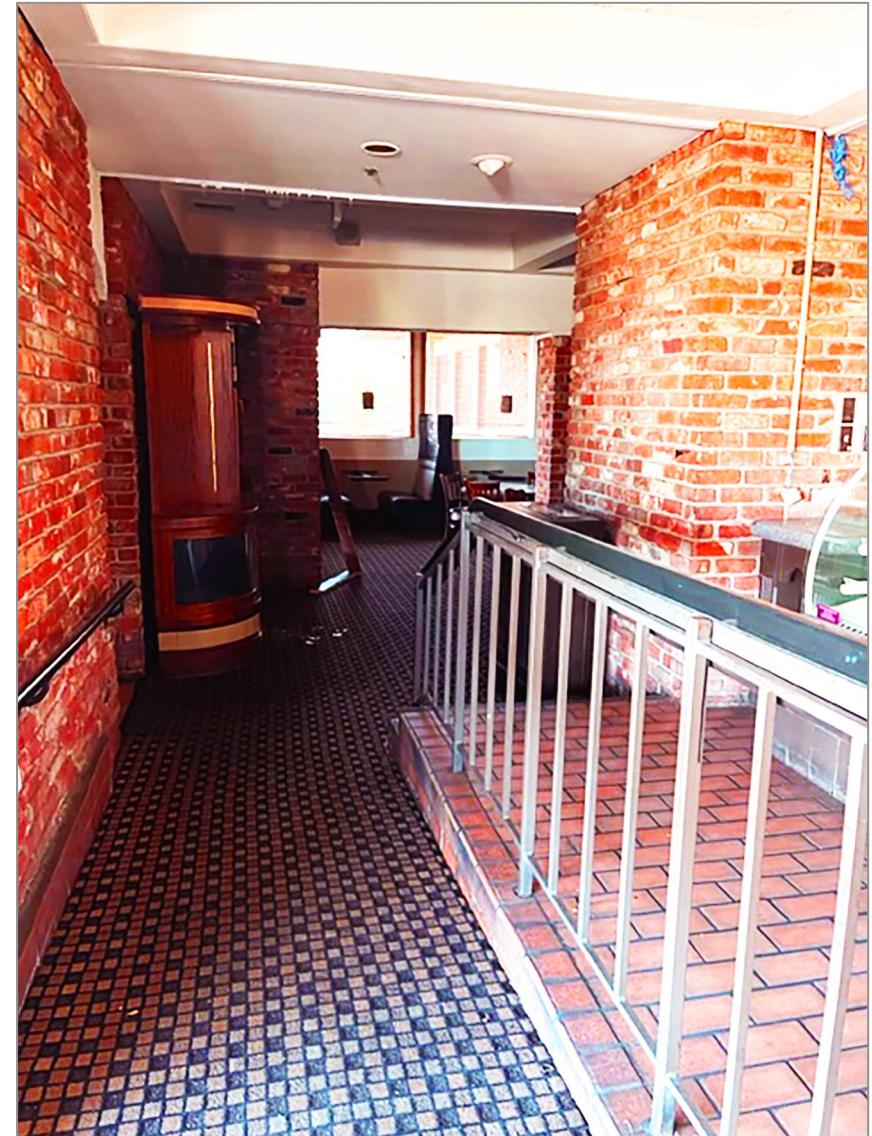
630-50—1,445± SF AVAILABLE  
630-49—Cigarette Outlet  
630-30—Happy Lemon (*Coming Soon*)  
630-20—Clear Sight Optometry  
630-10—Juicy Burger

632—\*Restaurant Coming Soon\*  
634—25,960± SF AVAILABLE  
636—Apoyo Financiero  
638—2,640± SF AVAILABLE  
642—Jewels & Diamonds  
644—Sally Beauty  
646—Chavez Supermarket  
656—  
658—Fish & Chips  
660—Beck Shoes  
664—Shin Sushi  
666—Elite Nails  
668—Sweet Rendezvous  
670—Bookkeeping  
672—Dentist  
680—Dick's Sporting Goods  
684—1,000± SF AVAILABLE  
686—Chicago Title  
690—Verizon Wireless

**Marie Callender's**  
**8,530± SF**



# Sunrise Plaza • 620-690 Blossom Hill Rd, San Jose, California





# Sunrise Plaza • 620-690 Blossom Hill Rd, San Jose, California





# Sunrise Plaza • 620-690 Blossom Hill Rd, San Jose, California





# Sunrise Plaza • 620–690 Blossom Hill Rd, San Jose, California





# Sunrise Plaza • 620-690 Blossom Hill Rd, San Jose, California





# Sunrise Plaza • 620-690 Blossom Hill Rd, San Jose, California





# Sunrise Plaza • 620–690 Blossom Hill Rd, San Jose, California

**RESTAURANT PAD: 8,530± SF**





# Sunrise Plaza • 620-690 Blossom Hill Rd, San Jose, California



## ESTIMATED DEMOGRAPHICS

	<u>1 Mile</u>	<u>3 Mile</u>	<u>5 Mile</u>
Population:	23,466	222,981	435,882
Avg. HH Income	\$119,657	\$129,921	\$157,805

For more information contact:

**David Taxin**

**Meacham/Oppenheimer**

Lic. #00983163

**DTaxin@moinc.net**

(408) 966-5919 or

**Marie Anderson**

**CBRE**

Lic. #00919144

**marie.anderson@cbre.com**

(408) 453-7468

The information contained herein has been obtained from sources we deem reliable. We cannot, however, assume responsibility for its accuracy.



**COMMERCIAL BROKERAGE | INVESTMENT SALES  
PROPERTY MANAGEMENT**

8 No. San Pedro Street, Suite 300  
San Jose, California 95110  
Tel: 408.378.5900  
[www.moinc.net](http://www.moinc.net)



225 West Santa Clara Street, 12<sup>th</sup> Floor  
San Jose, CA 95113  
[www.cbre.com/siliconvalley](http://www.cbre.com/siliconvalley)