

FOR LEASE ±1,420SF OFFICE SPACE ACROSS FROM GOLETA COTTAGE HOSPITAL
5346 HOLLISTER AVE., SUITE A4 | GOLETA, CA 93111



PROPERTY BRIEF

Well maintained office complex directly across the street from the new Goleta Valley Cottage Hospital. Office space is composed of 3 offices, all with windows, large conference room, reception area, kitchen and private bathroom. Client parking directly in front of office space. Well landscaped grounds. Very attractive office rate at only \$1.55/SF.

Lease Rate ± \$1.55/SF NNN (\$0.76)

Size ± 1,420 SF

Term ± 3-5 Years

Available ± July 1, 2017

Zoning ± CN (Neighborhood Commercial)

Parking ± Client Parking and 3 Employee Spaces

HVAC ± Yes

Restrooms ± 1 Private

Floors ± First

To Show ± Call Listing Agent

CSO ± 3%

The information provided here has been obtained from the owner of the property or from other sources deemed reliable. We have no reason to doubt its accuracy, but we do not guarantee it.

Jim Turner
805.879.9621
jturner@radiusgroup.com
CA Lic. 00970829



FOR LEASE ±1,420SF OFFICE SPACE ACROSS FROM GOLETA COTTAGE HOSPITAL
5346 HOLLISTER AVE., SUITE A4 | GOLETA, CA 93111

PROPERTY LOCATION



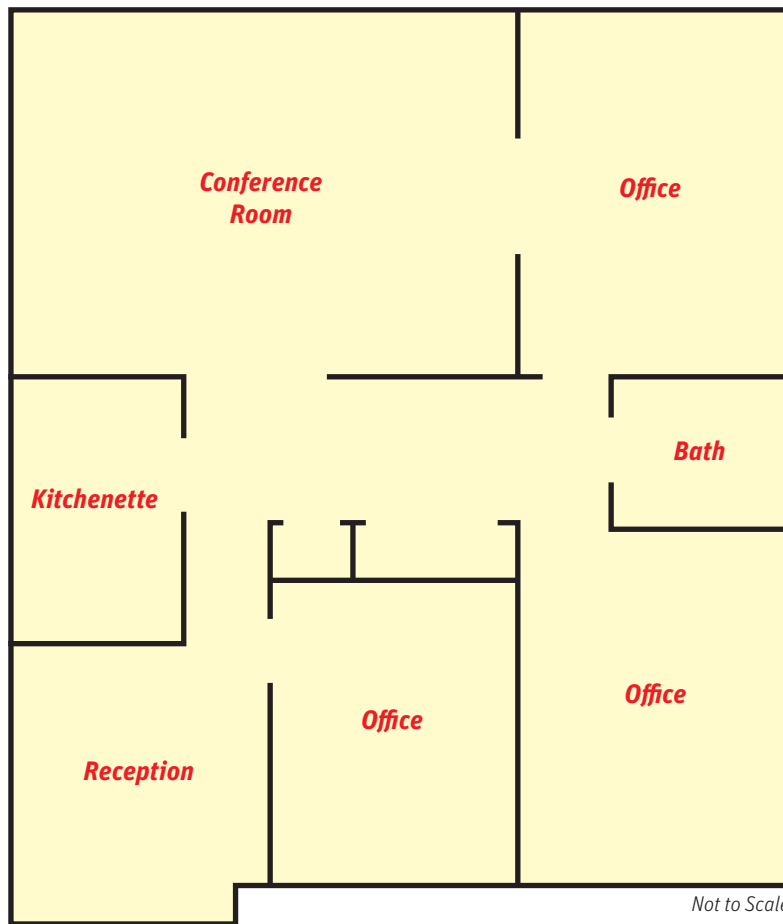
3.6 MILES TO SANTA BARBARA MUNICIPAL AIRPORT

Jim Turner
 805.879.9621
 jturner@radiusgroup.com
 CA Lic. 00970829



**FOR LEASE ±1,420SF OFFICE SPACE ACROSS FROM GOLETA COTTAGE HOSPITAL
5346 HOLLISTER AVE., SUITE A4 | GOLETA, CA 93111**

FLOOR PLAN



The information provided here has been obtained from the owner of the property or from other sources deemed reliable. We have no reason to doubt its accuracy, but we do not guarantee it.

Jim Turner
805.879.9621
jturner@radiusgroup.com
CA Lic. 00970829

