



©Copyright R.B. Murray Company



RETAIL SPACE FOR LEASE

RETAIL SPACE FOR LEASE | FOX GRAPE PLAZA | 3250 E BATTLEFIELD RD, SPRINGFIELD, MO 65804

- Grocery Anchored by Ruby's Price Cutter Flagship Store
- Great visibility on East Battlefield
- Existing tenants include: SuperCuts, Pasta Express, Mr. Goodcents, Papa Murphy's, US Bank, and Fox Grape Family Dental
- New LCD monument sign
- Large parking area
- Great east-side location only 1/2 mile from Highway 65

EST. 1909

2225 S. Blackman Road
Springfield, MO 65809
417.881.0600
rbmurray.com

Ross Murray, SIOR, CCIM
417.881.0600
ross@rbmurray.com

Ryan Murray, SIOR, CCIM, LEED AP, CPM
417.881.0600
ryan@rbmurray.com

R.B. | MURRAY COMPANY
SINCE 1909
COMMERCIAL & INDUSTRIAL REAL ESTATE

Executive Summary



PROPERTY SUMMARY

Available SF:	Suite M: 1,660± SF
Lease Rate:	\$13.50 SF/yr (NN)
Est. Monthly Rent: (Includes Est. CAM)	Suite M: \$2,525.97
Lot Size:	4.19 Acres
Building Size:	27,760 SF
Year Built:	1993
Parking:	213 spaces including handicap (8/1,000)
Zoning:	Planned Development 141
CAM Charge / SF	\$4.76 PSF
Taxes & Insurance:	Included in CAM

PROPERTY OVERVIEW

Suite M (formerly Tease Salon) now available. Fox Grape Plaza is located near the intersection of East Battlefield and Highway 65. Existing tenants include: SuperCuts, Pasta Express, Mr. Goodcents, Papa Murphy's, US Bank, and Fox Grape Family Dental. The shopping center is anchored by Ruby's Price Cutter (Associated Wholesale Grocers Flagship Store) and is one of the highest grossing sales grocery in the city. Median household income is \$62,450 annually. Traffic counts are 32,466± cars daily East/West. For additional information please contact listing agent(s).

PROPERTY HIGHLIGHTS

- Anchored by Price Cutter Plus
- Great visibility
- Traffic Counts: 32,466± cars daily
- Existing tenants include: SuperCuts, Pasta Express, Mr. Goodcents, Papa Murphy's, US Bank, & Fox Grape Family Dental
- Large parking area
- Newly installed roof
- Great location on East Battlefield only 1/2 mile from Highway 65
- Salon personal property owned by 3rd party available for sale (see page 6) - inquire with listing broker for pricing information

EST. 1909

The information listed above has been obtained from sources we believe to be reliable; however, we accept no responsibility for its accuracy.

RETAIL PROPERTY
FOR LEASE

RETAIL SPACE FOR LEASE | FOX GRAPE PLAZA
3250 E BATTLEFIELD RD, SPRINGFIELD, MO 65804



Available Spaces

Lease Rate: \$13.50 SF/YR (NN)
Lease Type: NN

Total Space: 1,660 SF
Lease Term: Negotiable

SPACE	SPACE USE	LEASE RATE	LEASE TYPE	SIZE (SF)	TERM	COMMENTS
M	Retail Space	\$13.50 SF/YR	Modified Net	1,660 SF	Negotiable	1,660 SF for lease at \$13.50 PSF (NN). Tenant responsible for prorata share of CAM, taxes, and insurance (estimated at \$4.76 PSF).

EST. 1909

Ross Murray, SIOR, CCIM | 417.881.0600 | ross@rbmurray.com

Ryan Murray, SIOR, CCIM, LEED AP, CPM | 417.881.0600 | ryan@rbmurray.com

2225 S. Blackman Road | Springfield, MO 65809 | 417.881.0600

R.B. | MURRAY COMPANY

COMMERCIAL & INDUSTRIAL REAL ESTATE

Salon Space



SALON FF&E FOR SALE

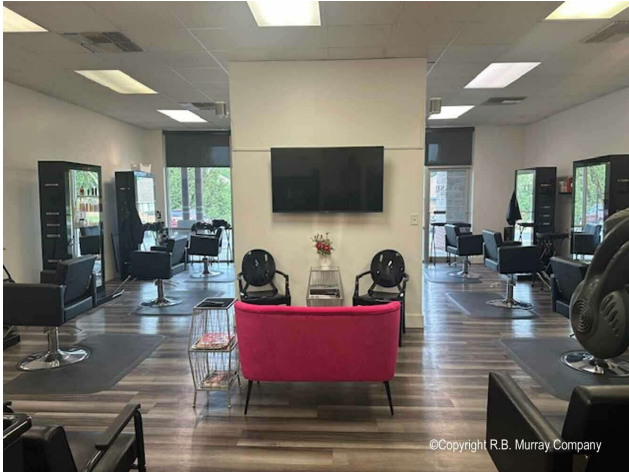
- 2 glass product shelves
- 9 hydraulic stylist chairs
- 6 mats
- 4 double-sided styling stations
- 2 single-sided styling stations
- 2 eyevac vacuums
- 3 shampoo bowls and chairs
- Utility sink
- Dishwasher
- Reception Desk
- The cabinets could be included in a package price for someone interested in moving in to a salon

RETAIL PROPERTY
FOR LEASE

RETAIL SPACE FOR LEASE | FOX GRAPE PLAZA
3250 E BATTLEFIELD RD, SPRINGFIELD, MO 65804

100 Years
SINCE 1909

Additional Photos - Suite M



Ross Murray, SIOR, CCIM | 417.881.0600 | ross@rbmurray.com
Ryan Murray, SIOR, CCIM, LEED AP, CPM | 417.881.0600 | ryan@rbmurray.com
2225 S. Blackman Road | Springfield, MO 65809 | 417.881.0600

R.B. | MURRAY COMPANY
COMMERCIAL & INDUSTRIAL REAL ESTATE

RETAIL PROPERTY
FOR LEASE

RETAIL SPACE FOR LEASE | FOX GRAPE PLAZA
3250 E BATTLEFIELD RD, SPRINGFIELD, MO 65804



Aerial



Ross Murray, SIOR, CCIM | 417.881.0600 | ross@rbmurray.com
Ryan Murray, SIOR, CCIM, LEED AP, CPM | 417.881.0600 | ryan@rbmurray.com
2225 S. Blackman Road | Springfield, MO 65809 | 417.881.0600

R.B. | MURRAY COMPANY
COMMERCIAL & INDUSTRIAL REAL ESTATE

RETAIL PROPERTY
FOR LEASE

RETAIL SPACE FOR LEASE | FOX GRAPE PLAZA
3250 E BATTLEFIELD RD, SPRINGFIELD, MO 65804



Retailer Map



Ross Murray, SIOR, CCIM | 417.881.0600 | ross@rbmurray.com
Ryan Murray, SIOR, CCIM, LEED AP, CPM | 417.881.0600 | ryan@rbmurray.com
2225 S. Blackman Road | Springfield, MO 65809 | 417.881.0600

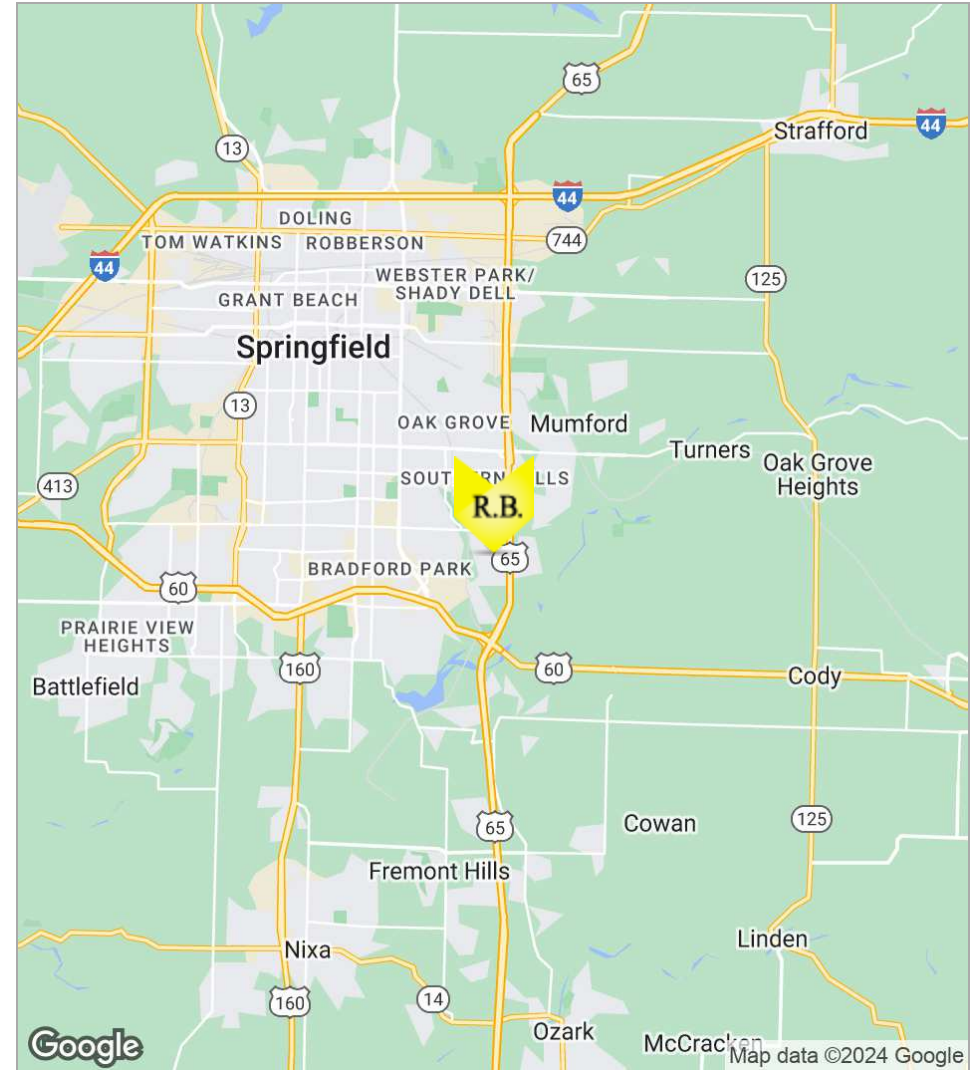
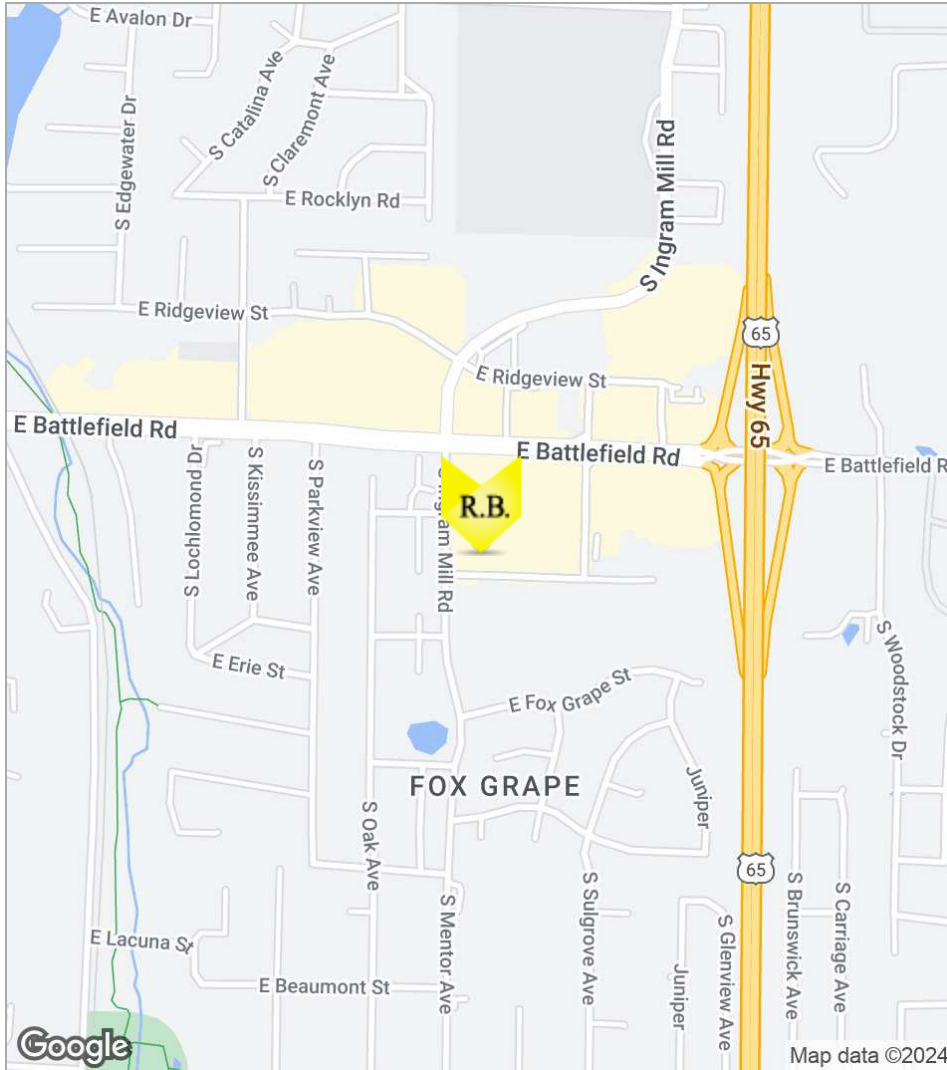
R.B. | MURRAY COMPANY
COMMERCIAL & INDUSTRIAL REAL ESTATE

RETAIL PROPERTY
FOR LEASE

RETAIL SPACE FOR LEASE | FOX GRAPE PLAZA
3250 E BATTLEFIELD RD, SPRINGFIELD, MO 65804



Location Maps



Ross Murray, SIOR, CCIM | 417.881.0600 | ross@rbmurray.com
Ryan Murray, SIOR, CCIM, LEED AP, CPM | 417.881.0600 | ryan@rbmurray.com
2225 S. Blackman Road | Springfield, MO 65809 | 417.881.0600

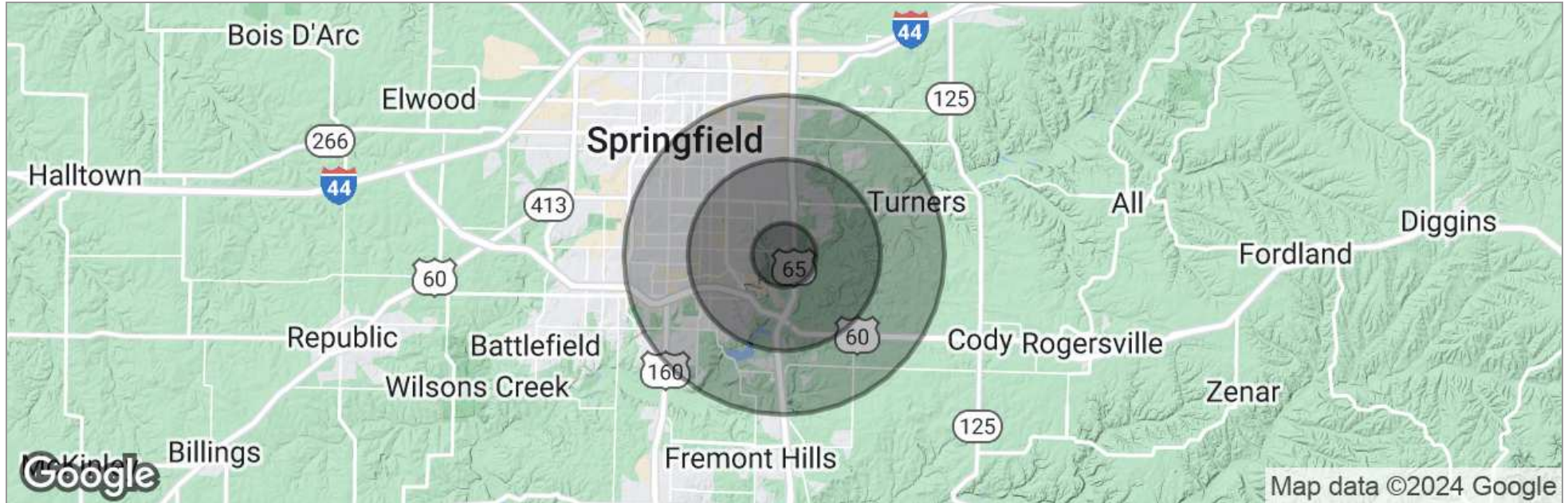
R.B. | MURRAY COMPANY
COMMERCIAL & INDUSTRIAL REAL ESTATE

RETAIL PROPERTY
FOR LEASE

RETAIL SPACE FOR LEASE | FOX GRAPE PLAZA
3250 E BATTLEFIELD RD, SPRINGFIELD, MO 65804



Demographics Map



	1 Mile	3 Miles	5 Miles
Total Population	5,626	39,267	108,106
Population Density	1,791	1,389	1,376
Median Age	39.8	41.2	38.0
Median Age (Male)	36.9	38.8	36.1
Median Age (Female)	41.9	43.0	39.7
Total Households	2,648	18,225	48,629
# of Persons Per HH	2.1	2.2	2.2
Average HH Income	\$61,217	\$64,729	\$60,840
Average House Value	\$192,537	\$203,549	\$210,844

* Demographic data derived from 2020 ACS - US Census

Ross Murray, SIOR, CCIM | 417.881.0600 | ross@rbmurray.com
 Ryan Murray, SIOR, CCIM, LEED AP, CPM | 417.881.0600 | ryan@rbmurray.com
 2225 S. Blackman Road | Springfield, MO 65809 | 417.881.0600

R.B. | MURRAY COMPANY
 COMMERCIAL & INDUSTRIAL REAL ESTATE

Advisor Bio

ROSS MURRAY, SIOR, CCIM
President



2225 S. Blackman Road
Springfield, MO 65809

T 417.881.0600
ross@rbmurray.com
MO #2004035357

Professional Background

Ross Murray is committed to carrying on the third generation of the family legacy. He studied at the University of Mississippi (Ole Miss) and graduated with distinction from Drury University with a degree in marketing and a minor in world studies. He earned designations with the Society of Industrial Realtors (SIOR) and Certified Commercial Investment Member (CCIM) through graduate-level training, high sale/lease volumes, and a demonstration of professionalism and ethics only showcased by industry experts. He is the only broker in Southwest Missouri besides his father, David Murray, to hold both SIOR and CCIM designations. Ross has the knowledge and experience to be a trusted and strategic real estate partner while specializing in investment sales, industrial, retail, office, and vacant land sales and leasing.

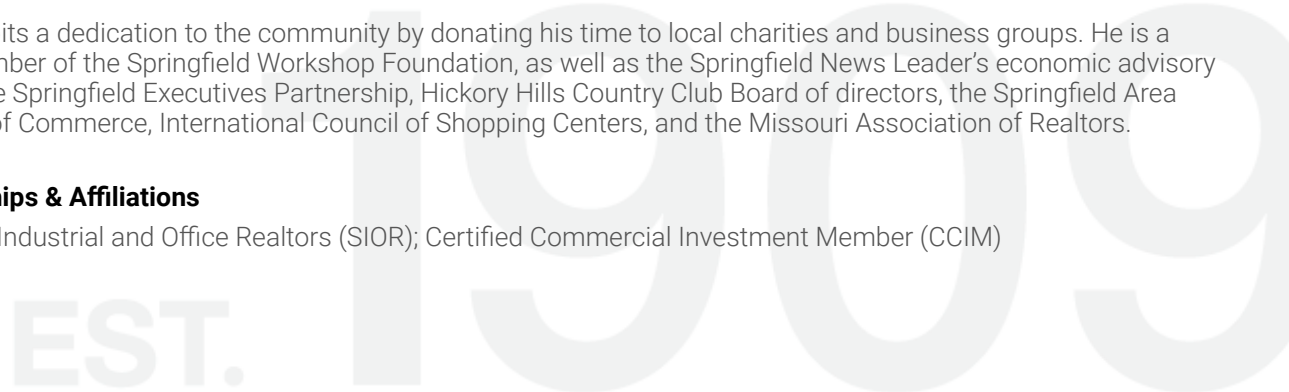
Since the industry downturn Ross has brokered many significant investment transactions totaling over 5,000,000 square feet. Notable transactions include the Town & Country Shopping Plaza, a national FedEx facility, Super Center Plaza Shopping Center, the Regional Headquarters for Wellpoint Blue Cross Blue Shield, University of Phoenix Regional Campus, and French Quarter Plaza.

Ross was recently selected as an honoree of one of the Springfield Business Journal's 2014 "40 Under 40" for being one of Springfield's brightest and most accomplished young business professionals. His current marketing projects include Project 60/65, a mixed-use development that covers 600 acres in Southeast Springfield, and the TerraGreen Office Park, one of the first sustainable LEED concept office developments in the area. Check out www.terragreenoffice.com for information.

Ross exhibits a dedication to the community by donating his time to local charities and business groups. He is a board member of the Springfield Workshop Foundation, as well as the Springfield News Leader's economic advisory council, the Springfield Executives Partnership, Hickory Hills Country Club Board of directors, the Springfield Area Chamber of Commerce, International Council of Shopping Centers, and the Missouri Association of Realtors.

Memberships & Affiliations

Society of Industrial and Office Realtors (SIOR); Certified Commercial Investment Member (CCIM)



Advisor Bio

RYAN MURRAY, SIOR, CCIM, LEED AP, CPM

Chief Executive Officer



2225 S. Blackman Road
Springfield, MO 65809

T 417.881.0600
F 417.882.0541
ryan@rbmurray.com
MO #2007030465

Professional Background

Ryan Murray joined R.B. Murray Company after graduating with Distinction Honors with a B.A. in Business Administration, and obtaining the Leeds School of Business Real Estate Certificate, from the University of Colorado. He was later named Vice President, specializing in the sales & leasing of office, retail, and industrial properties. Mr. Murray also oversees R.B Murray Company's property management & receivership divisions.

Recently Mr. Murray obtained the Society of Industrial and Office Realtors (SIOR) designation, a professional achievement for highly qualified commercial real estate practitioners with a strong transactional history in brokerage. SIOR individual members are the best in the commercial real estate industry, and the top-producers in their field. SIOR members are in more than 630 cities and 33 countries worldwide, and are recognized as top producing professionals – closing on average more than 30 transactions per year, and have met stringent production, education, and ethical requirements.

Mr. Murray has achieved the Certified Commercial Investment Member Designation (CCIM), and was one of the state's first commercial real estate professionals to achieve Leadership in Energy and Environmental Design Accredited Professional (LEED AP) status. As a Certified Commercial Investment Member (CCIM) Mr. Murray is a recognized expert in the disciplines of commercial and investment real estate, and as a LEED AP Mr. Murray has demonstrated a thorough understanding of green building practices and principles and the LEED Rating System.

Mr. Murray has also earned Certified Property Manager® (CPM®) designation from the Institute of Real Estate Management (IREM®), an affiliate of the National Association of REALTORS®. The CPM® designation is awarded to real estate managers who have met the Institute's rigorous requirements in the areas of professional education, examination and experience. CPM® Members must also abide by a rigorous Code of Professional Ethics that is strictly enforced by the Institute.

Mr. Murray currently serves as a director on the OTC Foundation Board and the Rotary Club of Springfield Southeast Board, is a past member of the Board of Directors for the Make-A-Wish® Foundation of Missouri, and a graduate of the Leadership Springfield program. Mr. Murray lives in Springfield with his wife Maggie and their son & daughter.

Memberships & Affiliations

SIOR, CCIM, LEED AP, CPM