

SALE

Multi-purpose Building

905 N SOMERS RD

Kalispell, MT 59901

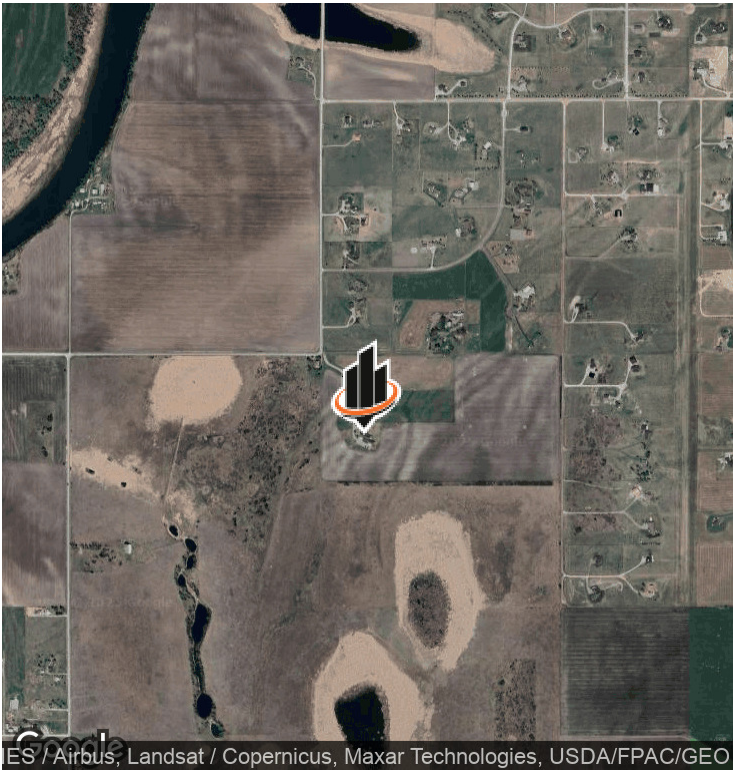
PRESENTED BY:

DAVID GIRARDOT

O: 406.212.0112

david.girardot@svn.com

PROPERTY SUMMARY



OFFERING SUMMARY

SALE PRICE:	\$2,795,000
NUMBER OF UNITS:	1
LOT SIZE:	34.69 Acres
BUILDING SIZE:	5,672 SF

PROPERTY DESCRIPTION

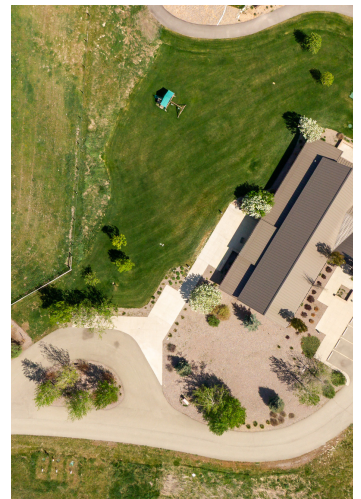
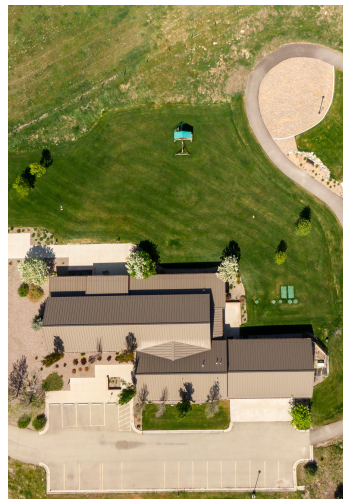
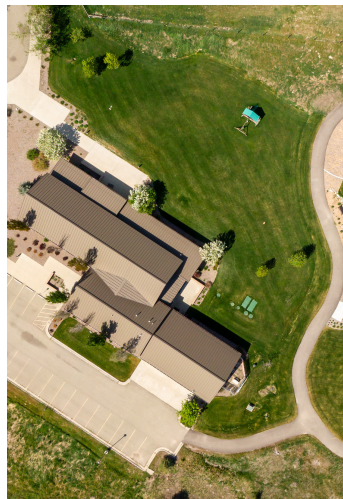
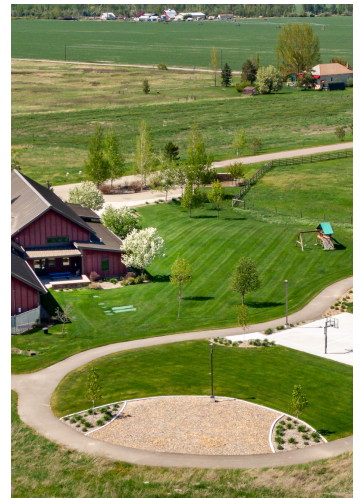
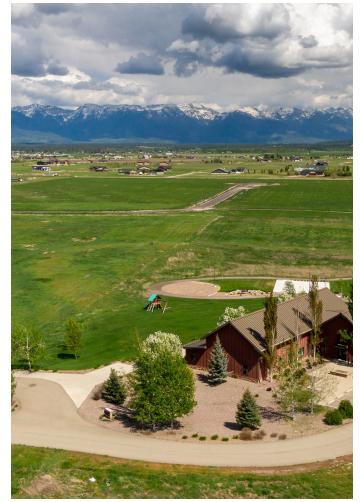
Discover an exceptional opportunity in the beautiful Lower Valley area—this expansive property, formerly a group home, offers endless possibilities for a variety of commercial or residential uses. With 9 bedrooms, a large open dining and living area, office space, conference and therapy rooms, and an oversized 4-car garage/shop, it's ideal for assisted living, retreat center, bed-and-breakfast, recovery or wellness facility, corporate lodge, or multi-family conversion. The grounds feature outdoor recreation areas, walking paths, and a rustic, serene setting that provides both peace and privacy. Located in a rural area yet just minutes from Kalispell and all services, the property offers easy year-round access and is vacant and ready for immediate occupancy.

PROPERTY HIGHLIGHTS

- Serene location
- Quality construction
- Additional land value
- Ready for immediate occupancy

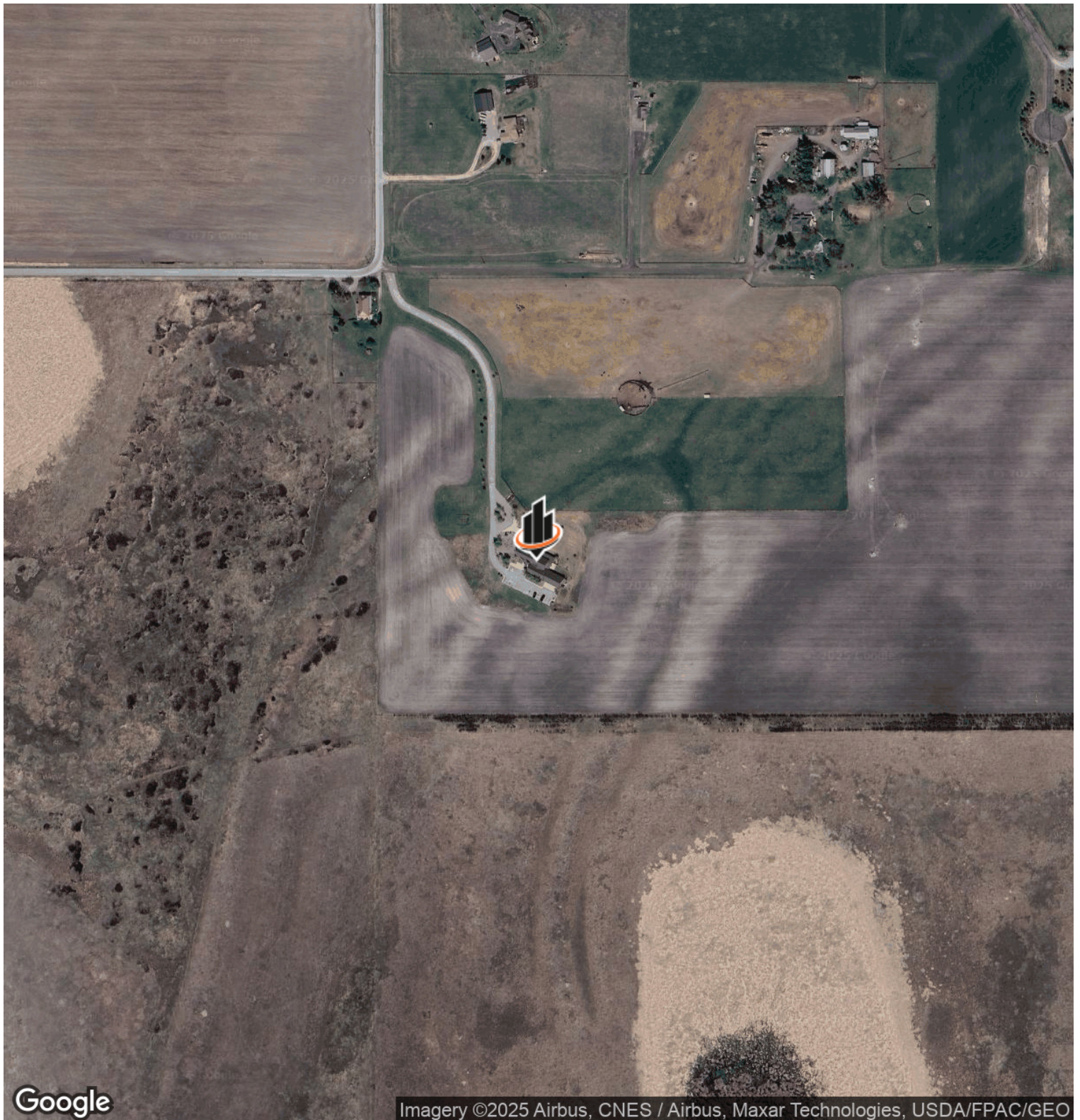
DAVID GIRARDOT
O: 406.212.0112
david.girardot@svn.com

ADDITIONAL PHOTOS



DAVID GIRARDOT
O: 406.212.0112
david.girardot@svn.com

LOCATION MAP

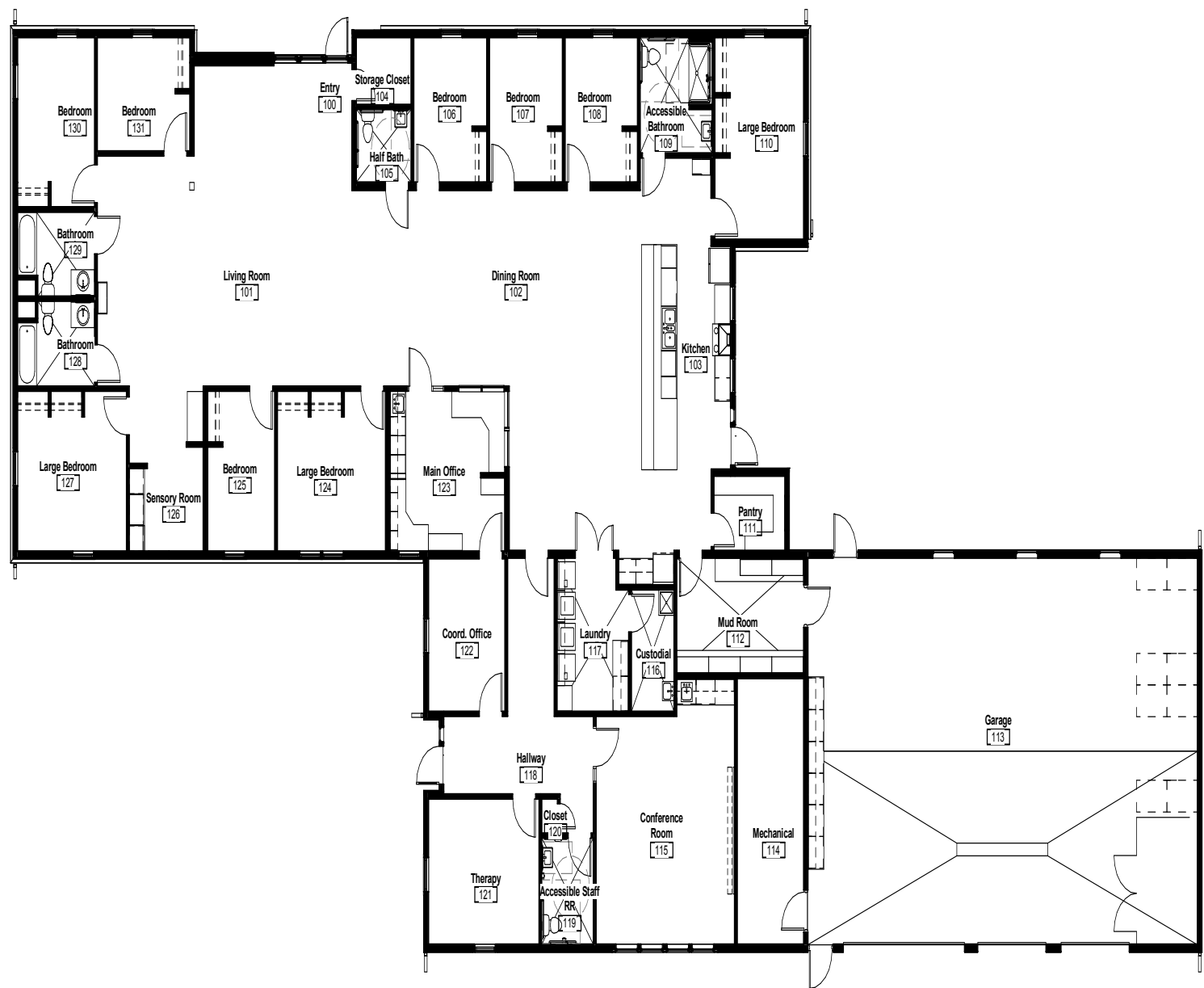


DAVID GIRARDOT
O: 406.212.0112
david.girardot@svn.com

905 N SOMERS RD | 905 N Somers Rd Kalispell, MT 59901

SVN | PUREWEST COMMERCIAL REAL ESTATE

FLOOR PLAN



DAVID GIRARDOT
O: 406.212.0112
david.girardot@svn.com