

OFFICE SPACE FOR LEASE



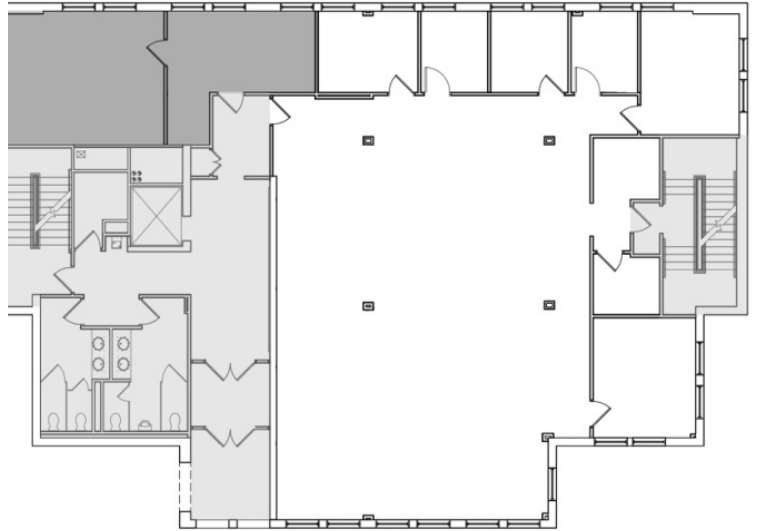
# ONE SMITH HILL

One Smith Hill, Providence, RI 02903

**LEEDS MITCHELL IV, SIOR**  
Executive Vice President  
401.751.3200 x307  
leeds@mgcommercial.com

**MG COMMERCIAL**  
365 Eddy Street, Penthouse Suite  
Providence, RI 02903  
401.751.3200 | mgcommercial.com

# PROPERTY SUMMARY



## PROPERTY DESCRIPTION

This 3,893 SF corner office suite offers windows on 3 sides with plenty of natural light and views of the State House. Current build out offers perimeter offices, a bright bull pen area and a kitchenette with water. Lease includes 3 parking spots on site with additional parking available for lease just across the street.

## LOCATION DESCRIPTION

A signature office building, One Smith Hill is located at the intersection of North Main Street and Smith Hill in Providence. It is one block from the State House and offers easy access to downtown Providence and Route 95.

## OFFERING SUMMARY

Lease Rate:	\$19.50 SF/yr (plus utilities)
Available SF:	3,893 SF
Building Size:	16,812 SF



**LEEDS MITCHELL IV, SIOR**  
Executive Vice President  
401.751.3200 x307  
leeds@mgcommercial.com

365 Eddy Street, Penthouse Suite  
Providence, RI 02903  
mgcommercial.com

