



**First Security**  
**BUILDING**  
at CITY CREEK

**Jordan Johnson**  
801.321.8711  
[Jordan.Johnson@propertyreserve.org](mailto:Jordan.Johnson@propertyreserve.org)



### **Address**

79 South Main Street, Salt Lake City, Utah 84111

### **First Security Building Overview**

Class-A Office Building

63,461 square feet

14 floors

The First Security Building at City Creek - a historic, fourteen-story multi-tenant office building erected in 1919 - enjoys a prestigious 100 South and Main address in the heart of Salt Lake City's central business district. Great care and effort in preservation of this historic building are evident in its recent repair and maintenance project. The location is second to none with the covered garage parking and convenient access to City Creek Center, one of the nation's largest redevelopment projects. This unique environment features a retractable glass roof, the very properular City Creek Center food cour, a creek that runs through the property, a pedestrian bridge and more. City Creek Center boasts world class fashion and dining destrinations with over 100 stores and restaurants.

### **Parking**

Underground, covered, and surface parking available at prevailing market rates

### **Public Transit**

Within easy walking distance to bus stations, TRAX stations, and Frontrunner stations

### **Fiber Optics**

Multiple carriers with dark fiber and extensive service options available

### **Elevators**

Three passenger elevators

### **Life Safety**

Emergency generator supplying power to elevators, emergency lighting, pressure fans

### **Lease Rate**

Full-service with base-year stop

### **Improvements**

Generous TI packages available

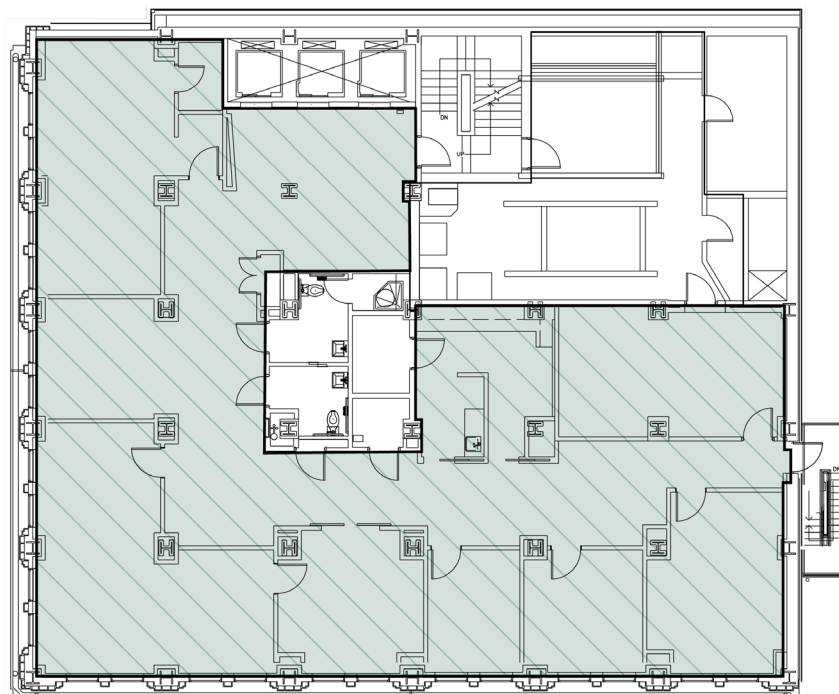
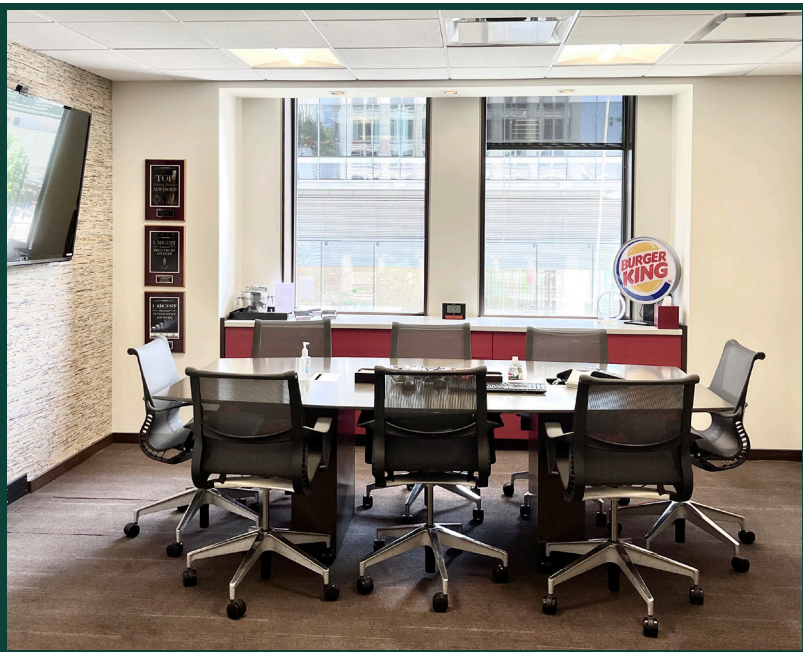
## Suite 300

Rentable Square Feet: 4,436

Lease Rates: \$25.00-\$28.00/RSF

Status: Available

Condition: Prior design intact and ready for occupancy



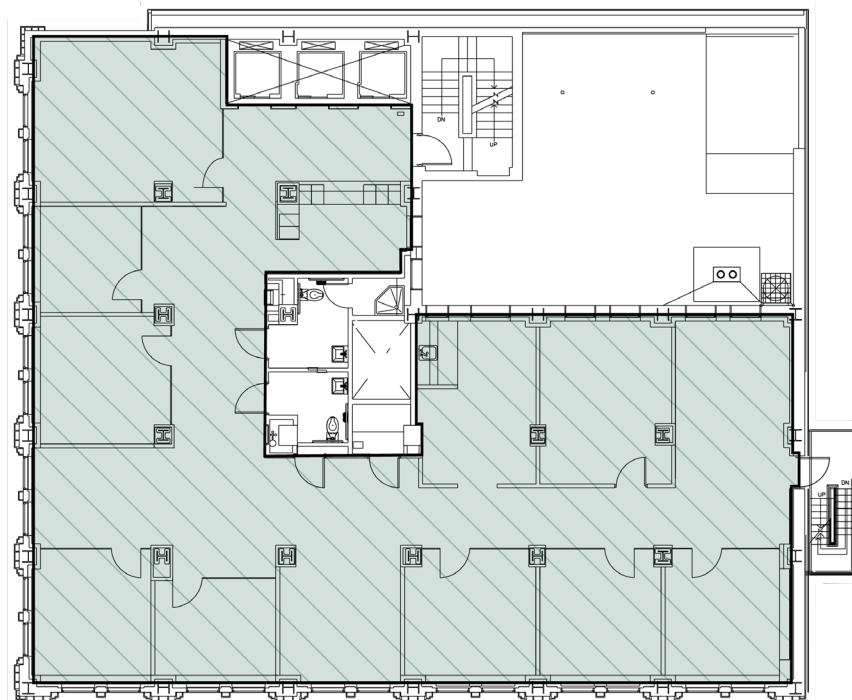
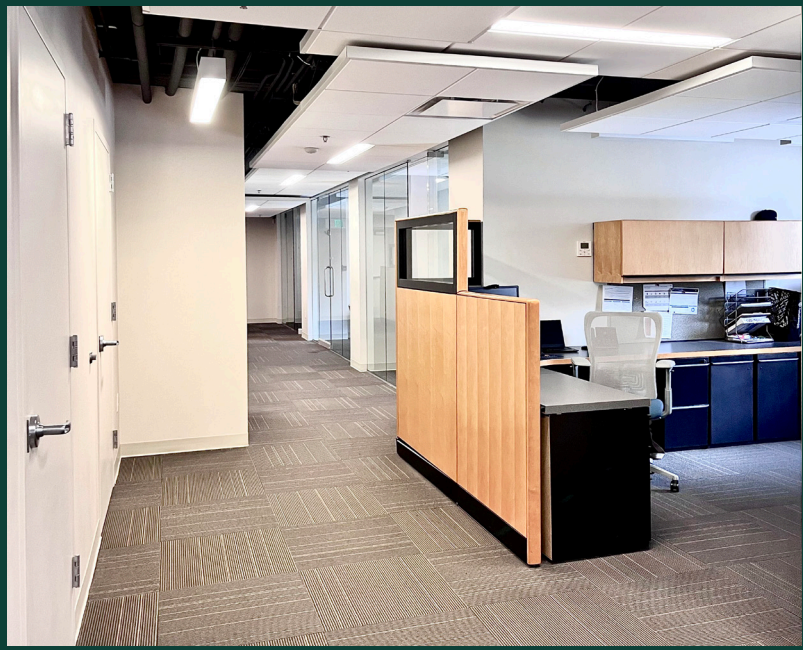
## Suite 400

Rentable Square Feet: 4,420

Lease Rates: \$25.00-\$28.00/RSF

Status: Available

Condition: Prior design intact and ready for occupancy



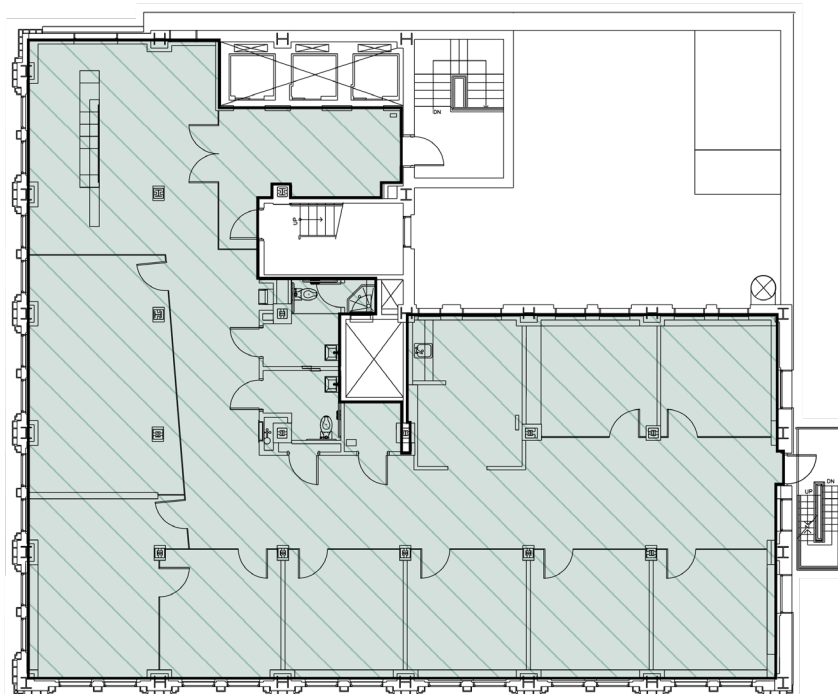
## Suite 500

Rentable Square Feet: 4,017

Lease Rates: \$25.00-\$28.00/RSF

Status: Available

Condition: Prior design intact and ready for occupancy



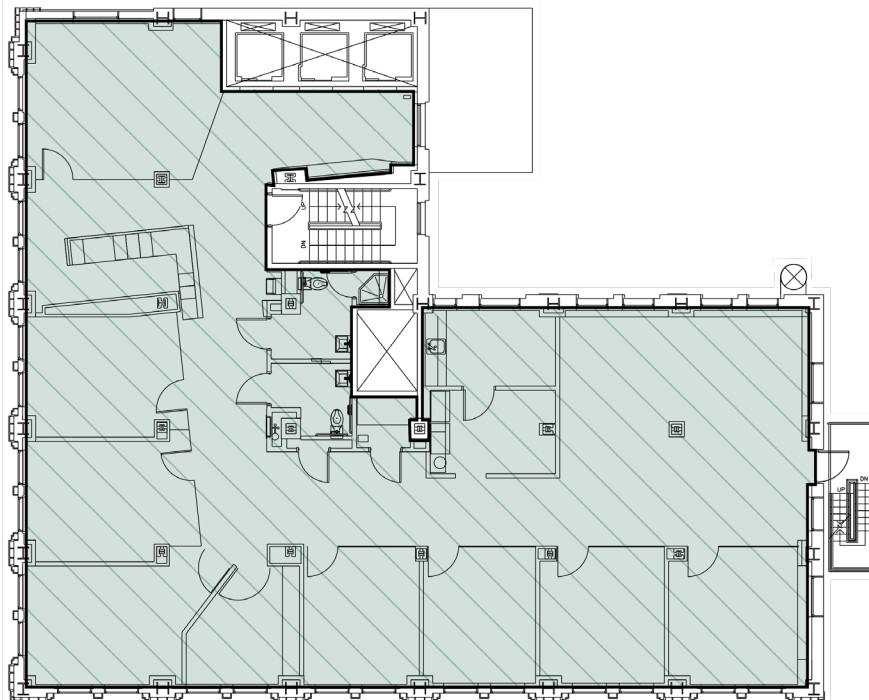
## Suite 600

Rentable Square Feet: 4,268

Lease Rates: \$25.00-\$28.00/RSF

Status: Available

Condition: Prior design intact and ready for occupancy



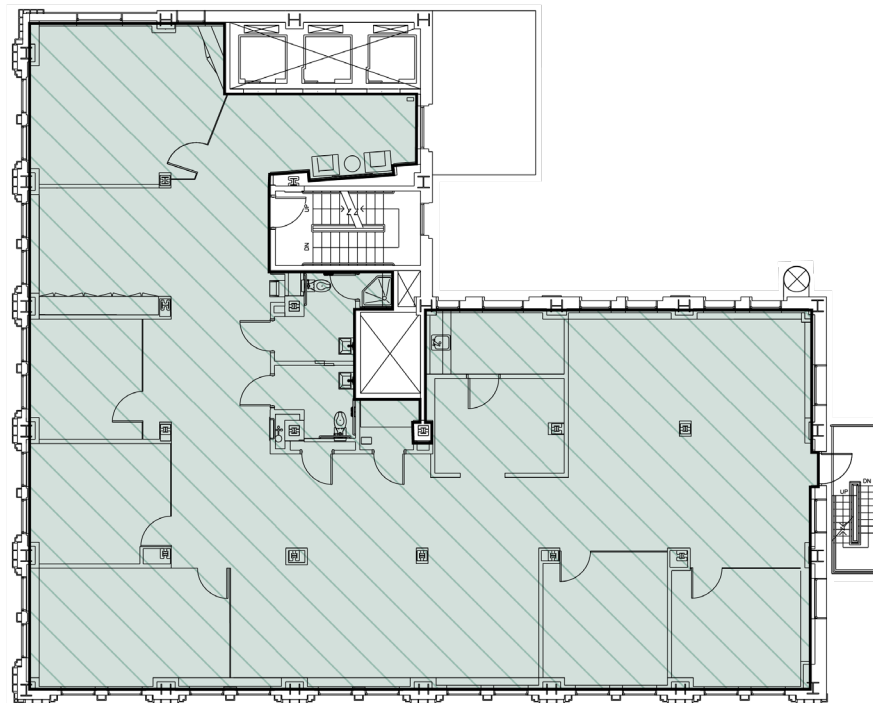
## Suite 700

Rentable Square Feet: 4,268

Lease Rates: \$25.00-\$28.00/RSF

Status: Available

Condition: Prior design intact and ready for occupancy



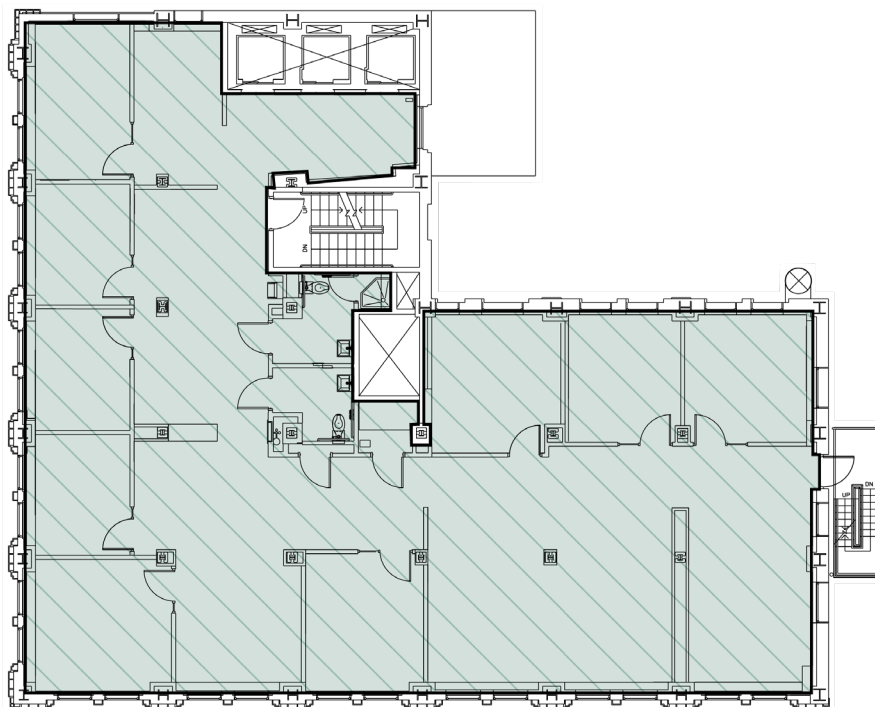
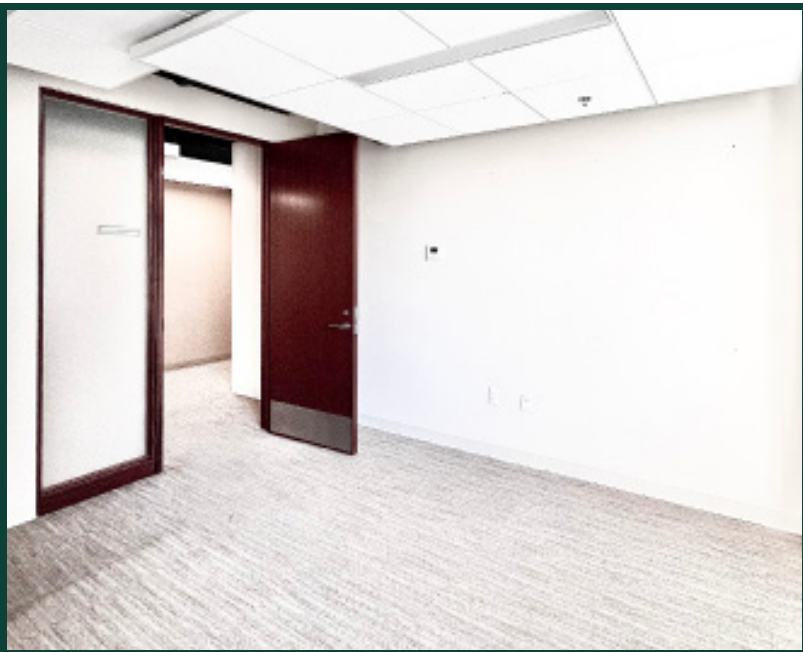
## Suite 800

Rentable Square Feet: 4,268

Lease Rates: \$25.00-\$28.00/RSF

Status: Available

Condition: Prior design intact and ready for occupancy





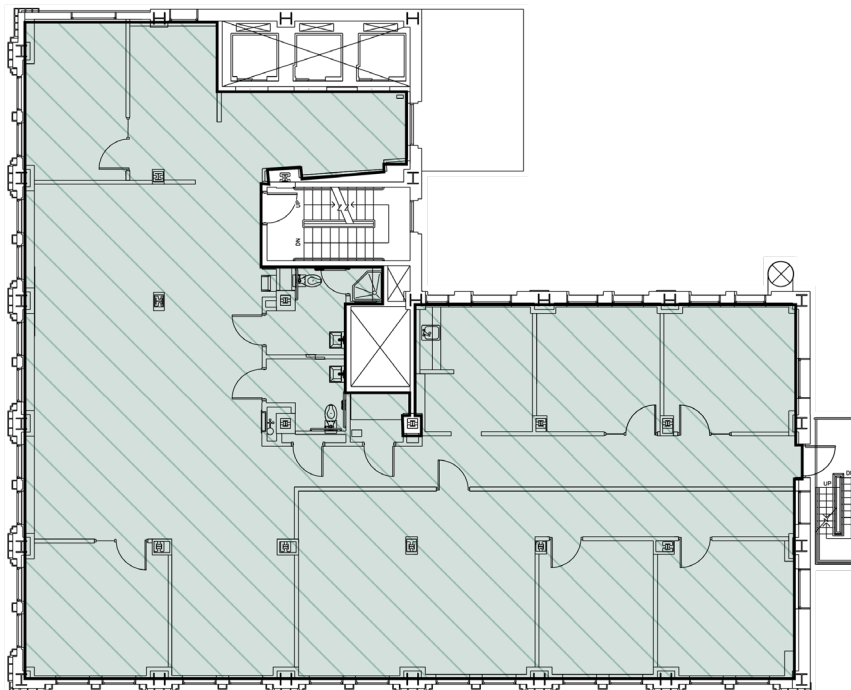
## Suite 900

Rentable Square Feet: 4,268

Lease Rates: \$25.00-\$28.00/RSF

Status: Available

Condition: Prior design intact and ready for occupancy



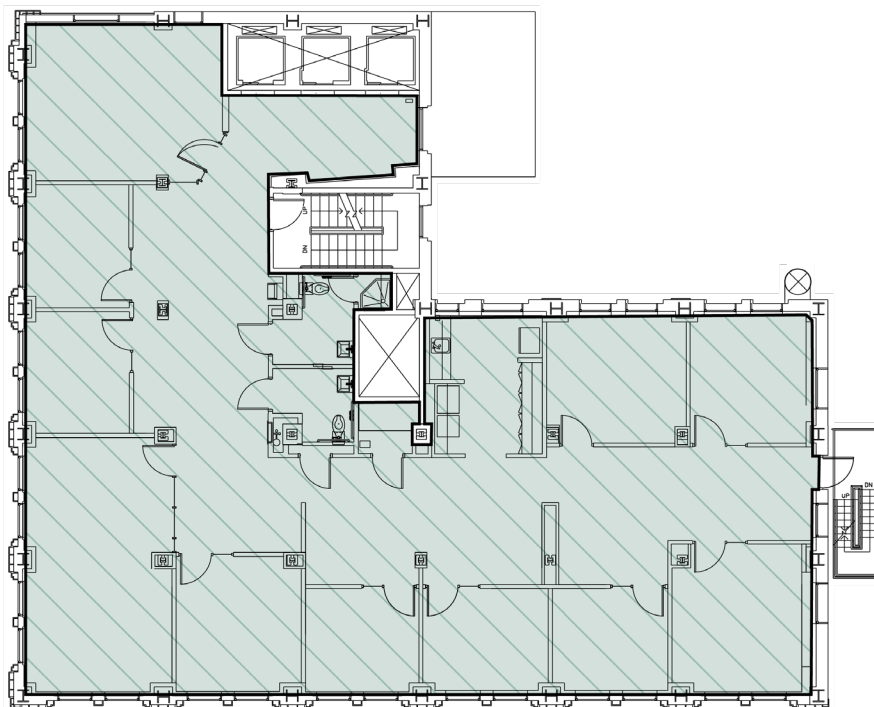
## Suite 1000

Rentable Square Feet: 4,268

Lease Rates: \$28.00-\$30.00/RSF

Status: Available

Condition: Prior design intact and ready for occupancy



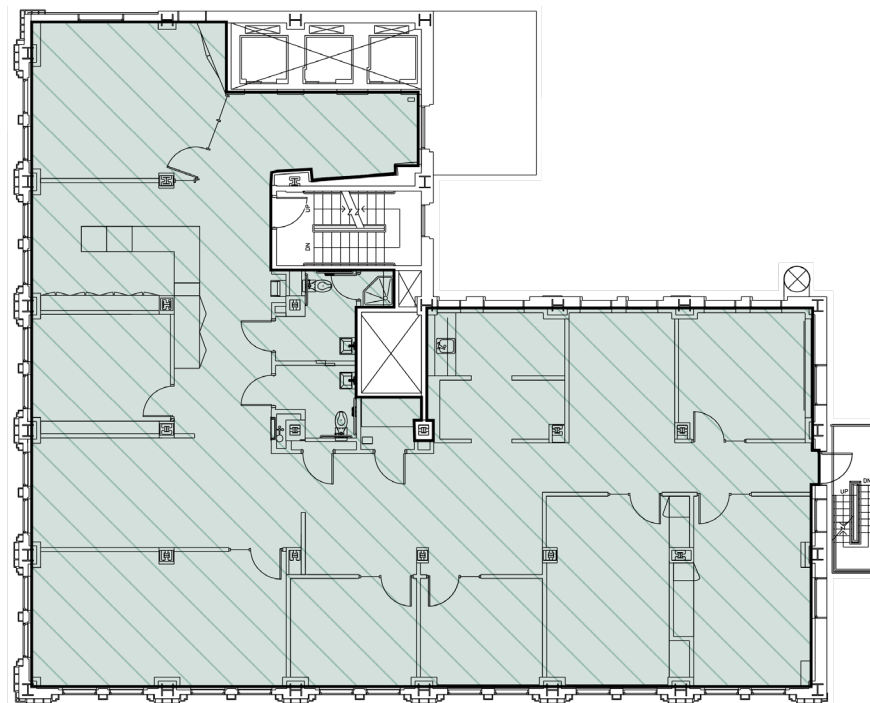
## Suite 1100

Rentable Square Feet: 4,268

Lease Rates: \$28.00-\$30.00/RSF

Status: Available now

Condition: Prior design intact and ready for occupancy



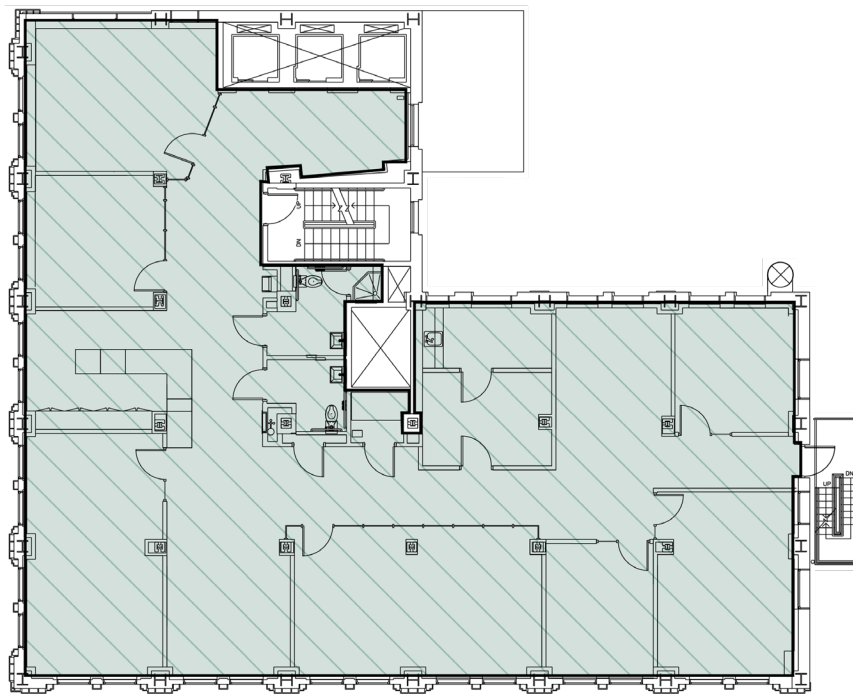
## Suite 1200

Rentable Square Feet: 4,268

Lease Rates: \$28.00-\$30.00/RSF

Status: Available now

Condition: Prior design intact and ready for occupancy



# In the Heart of Salt Lake City

● Food & Drink ● Experiences ● Lodging



Six World-Famous  
Ski Resorts –  
30 Minutes →



← To Salt Lake City  
International Airport –  
10 Minutes



## Contact

Jordan Johnson 801.321.8711

Jordan.Johnson@propertyreserve.org



PROPERTY  
RESERVE