

STOREFRONT RETAIL SPACE AT TOP PLAZA

PROPERTY INFORMATION

- Retail Space For Lease In Dollar Tree Anchored Center on Pulaski
- 1,428 sqft
- Open Floorplan with no columns
- 10' Ceilings
- 17 Parking Spaces
- 200A
- High Visibility & Frontage on Pulaski
- Tenant Signage on building
- Pylon Signage
- High Traffic Count

- This space benefits from exceptional visibility with its frontage on Pulaski
- Join Dollar Tree and Coin Laundry, and area tenants include: Starbucks, Chase Bank, Walgreens, Sarpino's Pizzeria, O'Reilly, T-Mobile, Dunkin, Aldi & More

ZONING

B3-2

WARD

39

ALDERMAN

Nugent, Samantha

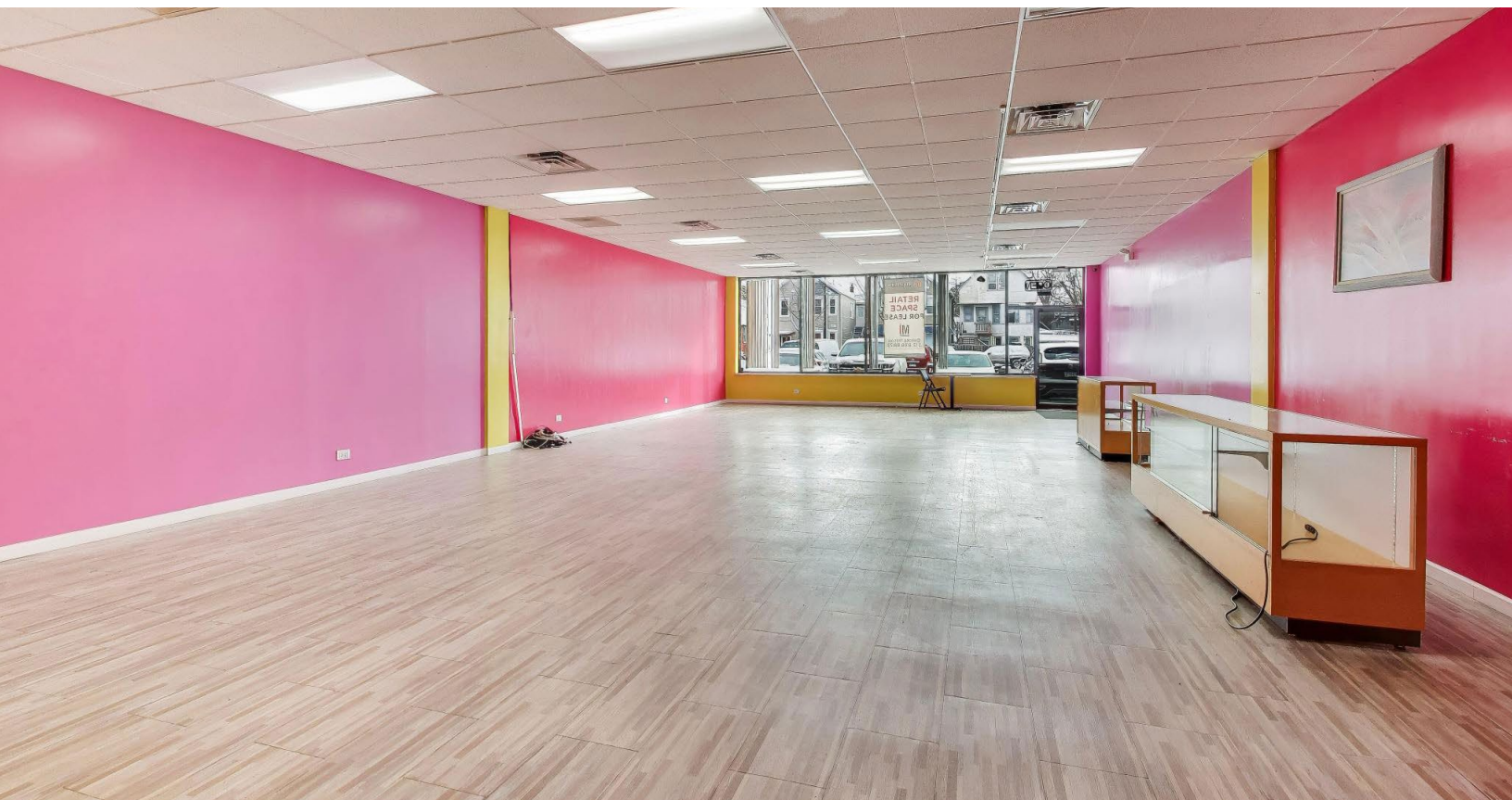
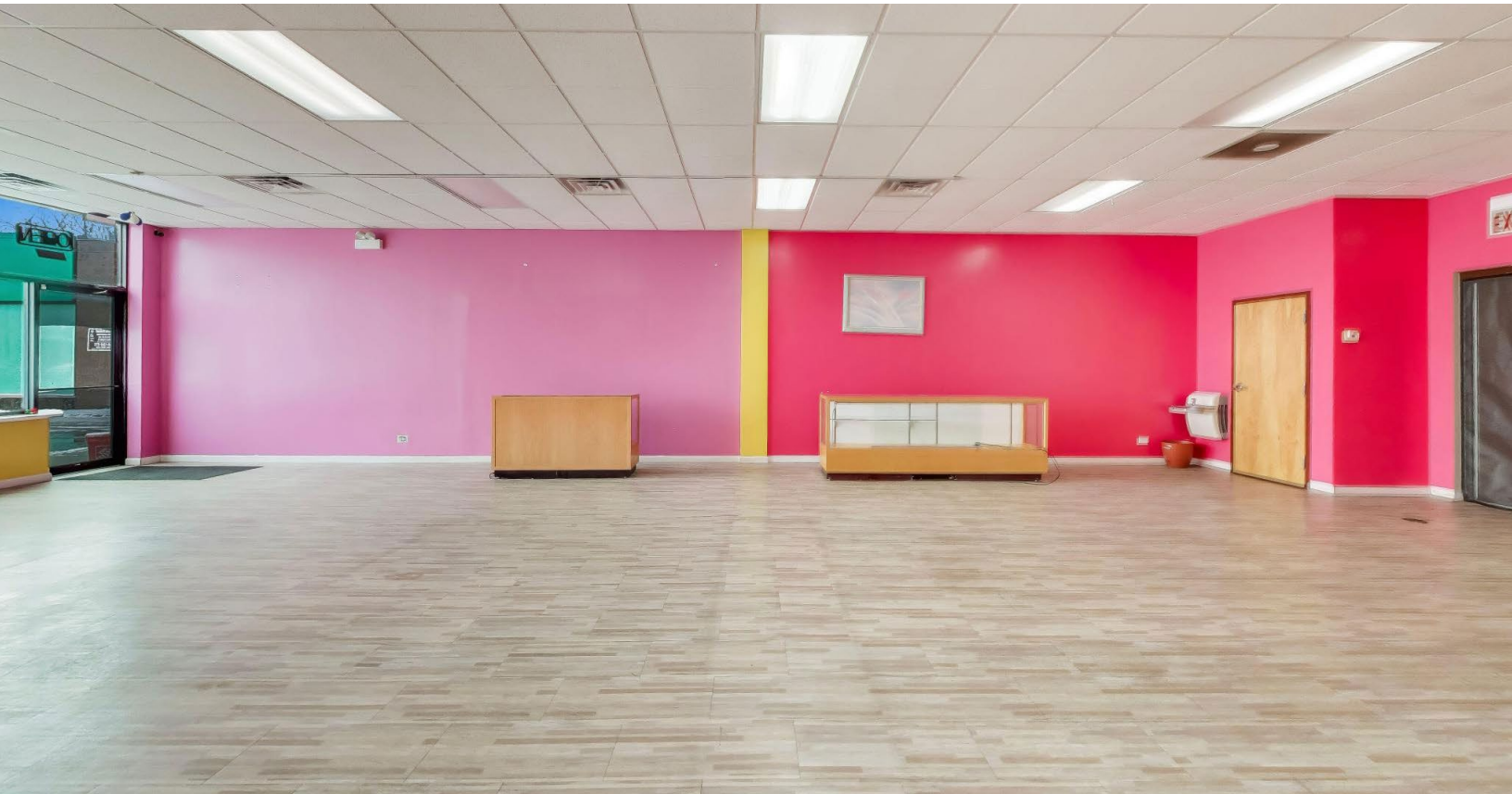
DAKOTA NILSON

312.838.8873

dakotnilson@atproperties.com

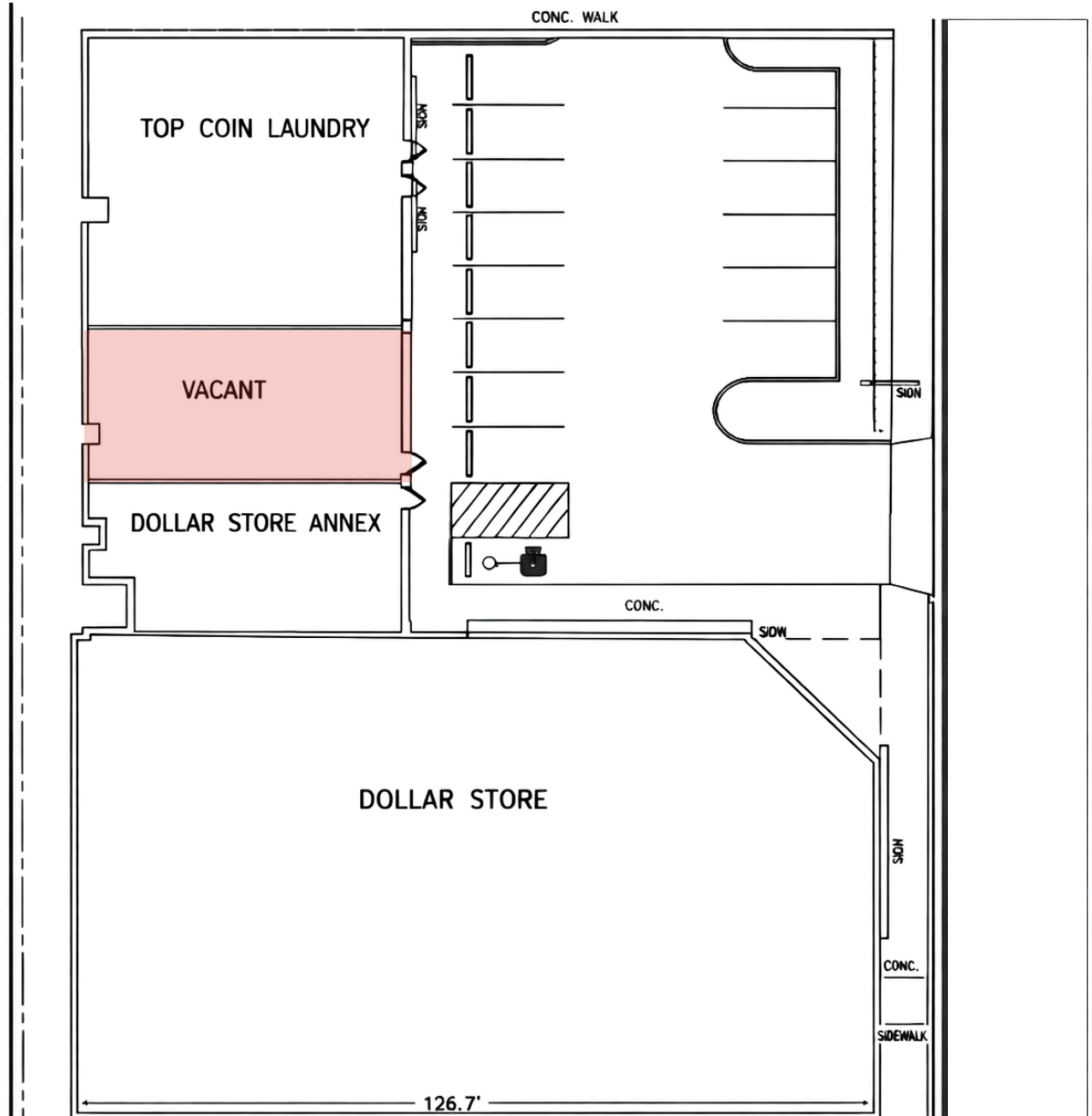
@properties[®]
COMMERCIAL







1423 sq ft





ALBANY PARK

If variety is the spice of life, Albany Park is on fire.

Neighbors are not strangers in this tight-knit Northwest Side neighborhood. Shops and eateries reflect the neighborhood's eclectic identity, with a variety of cuisines and tastes for residents to try.

Homes include a mix of single-family homes, bungalows, brick two-flats, apartments, and duplexes. Nearby North Mayfair, which is part of the larger Albany Park community, is a mecca of historic Chicago bungalows, earning a spot on the National Register of Historic Places.

The neighborhood's 16-acre Eugene Field park includes two bridges as well as a playground, tennis courts, athletic fields, 60-foot tall light tower, and historic Tudor Revival style brick field house. The park was named for American writer Eugene Field, a Chicago journalist best known for his work as a children's poet including the classic Little Boy Blue.

Residents of Albany Park have access to the 312 RiverRun trail, a two-mile trail that connects Albany Park and other nearby neighborhoods and will include the longest pedestrian bridge in Chicago with a wide expanse for runners, walkers, and cyclists.

Whether heading downtown, to the suburbs, or to O'Hare International Airport, commuters have access to the CTA Blue Line and Brown Line, as well as the Edens Expressway.

AREA DEMOGRAPHICS

POPULATION ESTIMATE

1 MILE

50,494

3 MILE

404,134

5 MILE

1,139,890

ESTIMATED AVERAGE HOUSEHOLD INCOME

1 MILE

\$122,767

3 MILE

\$134,422

5 MILE

\$136,500