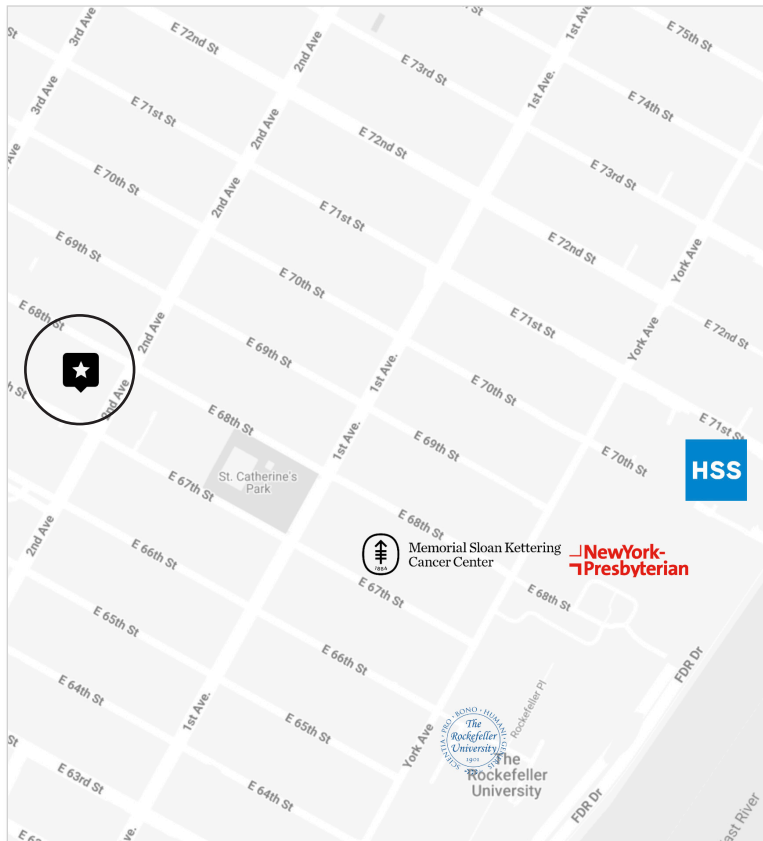


SECOND FLOOR
MEDICAL OFFICE
FOR LEASE

PRICE \$9,250
APPROX SIZE 1,480+/- RSF
TERM NEGOTIABLE
POSSESSION IMMEDIATE



235 EAST 67TH STREET, SUITE 201
CORNER OF EAST 67TH STREET AND 2ND AVENUE

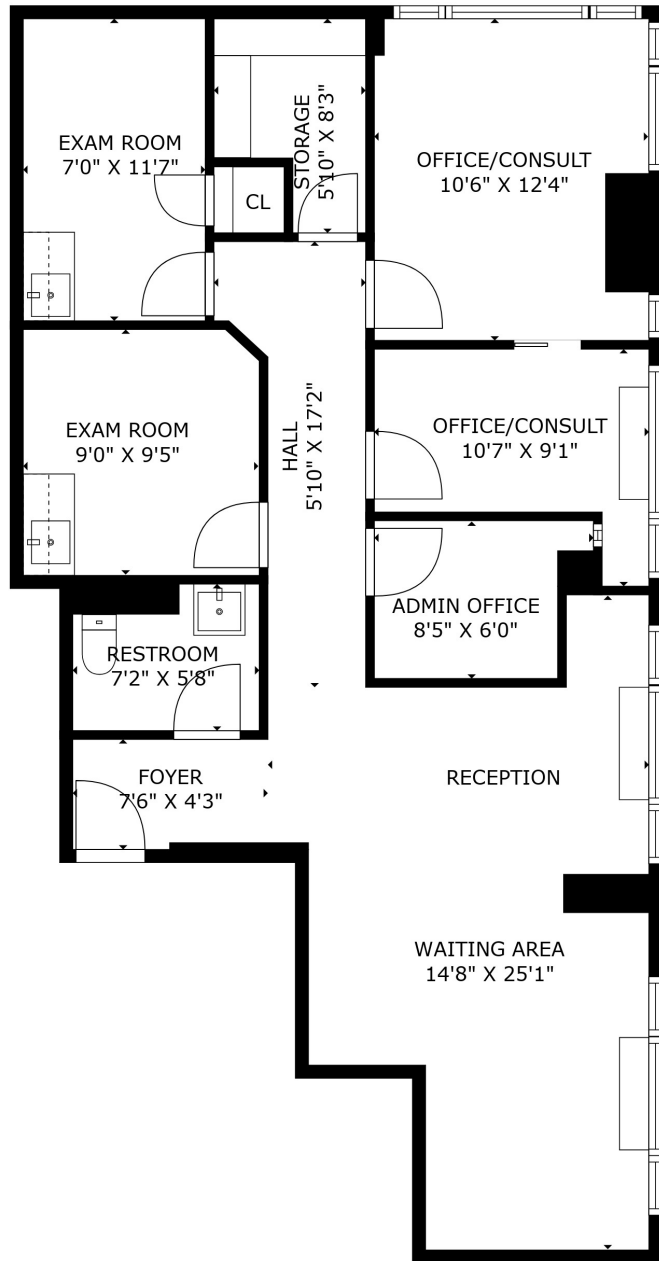
LAYOUT

- WAITING AREA
- RECEPTION
- TWO EXAM ROOMS
- TWO OFFICES/CONSULTS
- STORAGE ROOM
- RESTROOM

ADDITIONAL FEATURES

- PRISTINE INSTALLATION
- HERRINGBONE FLOORING
- NATURAL AND OVERHEAD LIGHTING
- CENTRAL AIR CONDITIONING
- ADAPTABLE TO ANY MEDICAL SPECIALTY





FLOOR PLAN FOR ILLUSTRATIVE PURPOSES ONLY



Paul L Wexler

LICENSED ASSOCIATE
REAL ESTATE BROKER

P: 212.836.1075
E: PWexler@corcoran.com

Josef Yadgarov

LICENSED ASSOCIATE
REAL ESTATE BROKER

P: 212.836.1097
E: josef.yadgarov@corcoran.com

Alisia Ramlochan

LICENSED ASSOCIATE
REAL ESTATE BROKER

P: 212.893.1450
E: alisia.ramlochan@corcoran.com

Kurt Herold

LICENSED ASSOCIATE
REAL ESTATE BROKER

P: 212.323.3817
E: kherold@corcoran.com

Cosmin Bitra

LICENSED ASSOCIATE
SALESPERSON

P: 917.602.5754
E: cosmin.bitra@corcoran.com