

WORKSPACE FOR LEASE

234 SW BROADWAY STREET, PORTLAND, OR 97205



Apex Real Estate Partners
415 NW 11th Avenue / Portland, OR 97209
P. 503.595.2840 / www.apexcre.com

Max Schlesinger, Broker
971.703.4702
Max@apexcre.com



OFFICE / RETAIL SPACE FOR LEASE



± 17,302 RSF available



Internal spiral staircase creates ± 17,302 SF of contiguous space



Open layout, ready for tenant improvements



Exposed high ceilings



Oversized windows for abundant natural light



Great visibility & signage opportunity



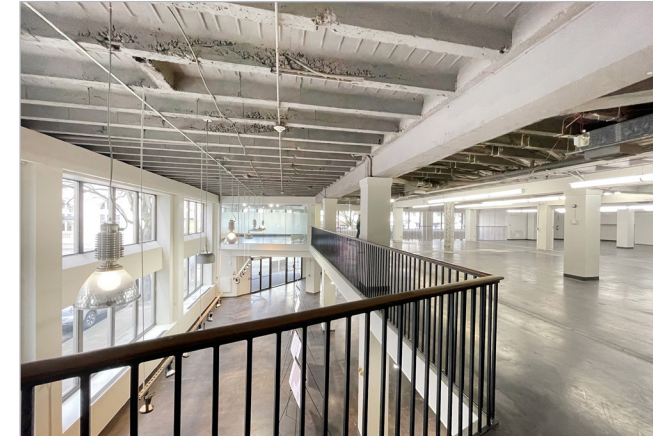
Ample monthly parking in garage next door as well as street parking in the immediate area



Excellent public transportation access

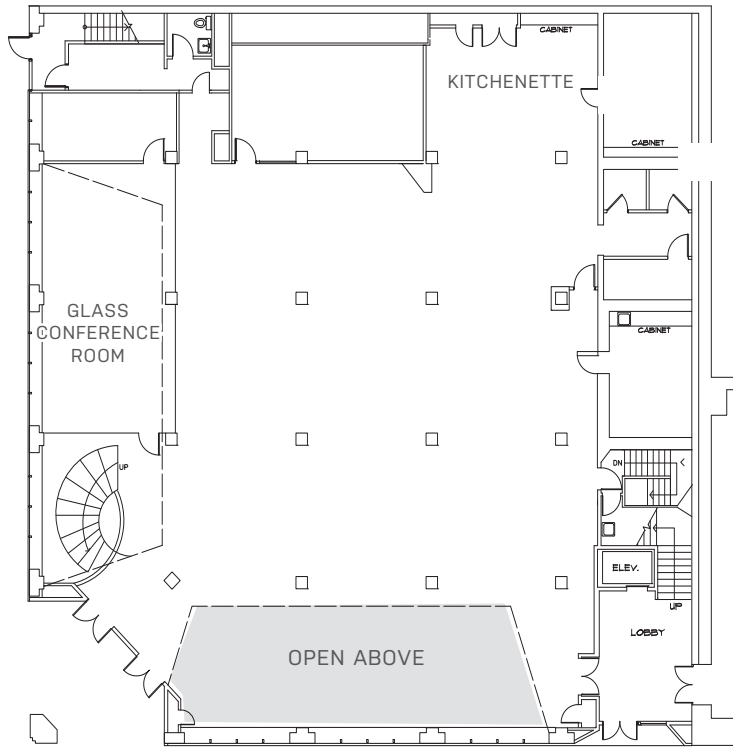


Central location in downtown Portland

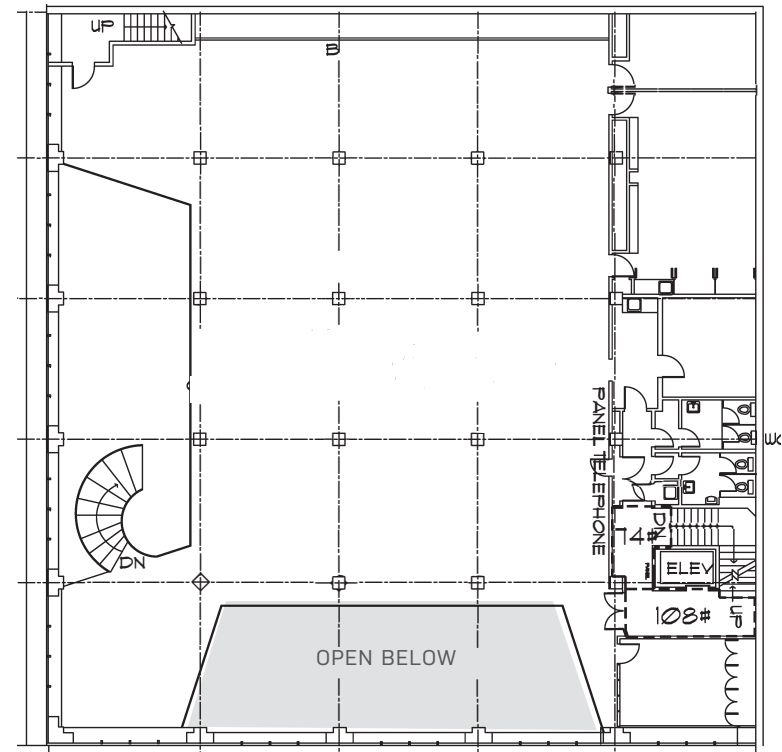


FLOOR PLANS

1ST FLOOR: ± 9,782 RSF



2ND FLOOR: ± 7,520 RSF



RENDERINGS



TRANSPORTATION

- TRIMET BUS
- PORTLAND STREETCAR
- TRIMET MAX

