



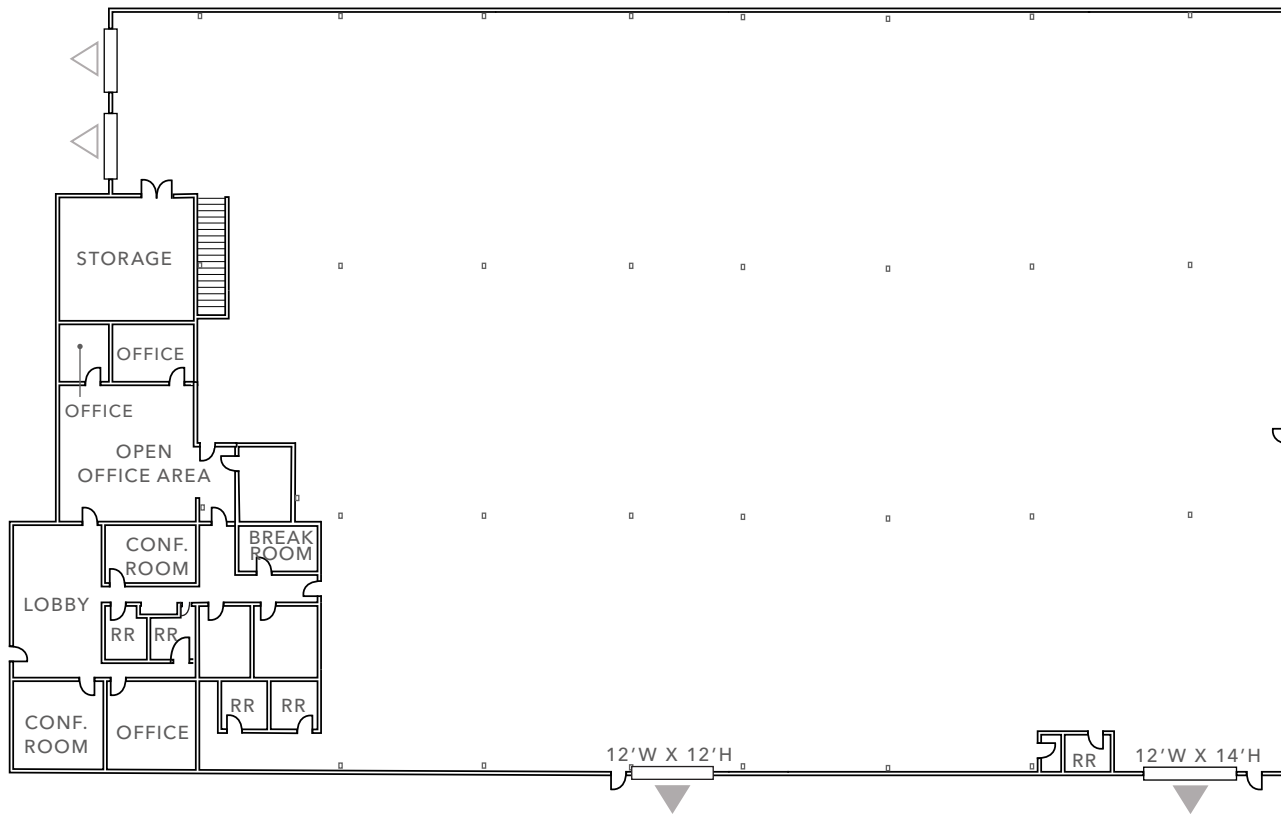
FOR LEASE

*±28,956 SF Industrial/Manufacturing building with
easy freeway access, in the heart of Santa Clara*

1401 MARTIN AVE, SANTA CLARA, CA

DAVE GEISSBERGER
408.588.2338
dave.geissberger@kidder.com
LIC N° 01401887

FLOOR PLAN



FLOOR PLAN NOT TO SCALE



▲ Grade level loading
△ Dock-high loading

PROPERTY HIGHLIGHTS

20' - 23' clear height

1,000 amps at 120/240 volt power

Dock and grade level loading

Fenced yard

Low Santa Clara utilities

Fully sprinkelered

Distributed power and air

Skylights

Great access to 101, 87, & 880

\$1.65

LEASE RATE (NNN)

±\$0.15

OPERATING EXPENSES

KIDDER.COM

This information supplied herein is from sources we deem reliable. It is provided without any representation, warranty, or guarantee, expressed or implied as to its accuracy. Prospective Buyer or Tenant should conduct an independent investigation and verification of all matters deemed to be material, including, but not limited to, statements of income and expenses. Consult your attorney, accountant, or other professional advisor.





KIDDER.COM

This information supplied herein is from sources we deem reliable. It is provided without any representation, warranty, or guarantee, expressed or implied as to its accuracy. Prospective Buyer or Tenant should conduct an independent investigation and verification of all matters deemed to be material, including, but not limited to, statements of income and expenses. Consult your attorney, accountant, or other professional advisor.