



**RATE  
REDUCED!**

## Sentry Office Plaza

216 Haddon Ave. | Westmont, NJ

### Property Description

Located on Haddon Avenue, adjacent to the Westmont PATCO station, this building offers abundant parking, on-site property management 24/7, security camera and controlled access, building cleaning 2x daily (day and evening), as well as being walking distance to shops and restaurants. Outdoor dining is open on Haddon Avenue. The seven-story, 120,389 SF building offers you big city convenience at a small town price. Directly across the street from the exciting new \$50 million Haddon Town Centre mixed use development, this is the perfect location for your business!

Space Available:	48,750 SF
Min. Divisible:	622 SF
Max. Contiguous:	12,401 SF
Stories:	7
Built:	1975
Parking:	330+ vehicles
Elevators:	2



Lease Rates starting at  
**\$15.50/SF + UTILITIES**

For more information:

**Rebecca Ting, SIOR**

+1 856 234 9600 • [rebecca.ting@naimertz.com](mailto:rebecca.ting@naimertz.com)

**Julie Kronfeld, SIOR**

+1 856 802 6516 • [julie.kronfeld@naimertz.com](mailto:julie.kronfeld@naimertz.com)

NO WARRANTY OR REPRESENTATION, EXPRESS OR IMPLIED, IS MADE AS TO THE ACCURACY OF THE INFORMATION CONTAINED HEREIN, AND THE SAME IS SUBMITTED SUBJECT TO ERRORS, OMISSIONS, CHANGE OF PRICE, RENTAL OR OTHER CONDITIONS, PRIOR SALE, LEASE OR FINANCING, OR WITHDRAWAL WITHOUT NOTICE, AND OF ANY SPECIAL LISTING CONDITIONS IMPOSED BY OUR PRINCIPALS NO WARRANTIES OR REPRESENTATIONS ARE MADE AS TO THE CONDITION OF THE PROPERTY OR ANY HAZARDS CONTAINED THEREIN ARE ANY TO BE IMPLIED.

21 Roland Avenue  
Mount Laurel, NJ 08054  
+1 856 234 9600  
[naimertz.com](http://naimertz.com)

Current Availabilities  
Sentry Office Plaza • Westmont, NJ

### First Floor

Suite 101	1,694 RSF <sup>1</sup>
Suite 105	1,385 RSF
Suite 111	747 RSF <sup>1</sup>

<sup>1</sup>can be combined for a total of 2,441 SF

### Second Floor

Suite 200	2,025 RSF <sup>2</sup>
Suite 202	4,357 RSF <sup>2</sup>
Suite 210	3,195 RSF <sup>2</sup>

<sup>2</sup>can be combined for a total of 9,577 SF

### Third Floor

Suite 322	1,061 RSF
Suite 325	2,286 RSF

### Fourth Floor

Suite 406	3,203 RSF
-----------	-----------

### Fifth Floor

Suite 500	5,831 RSF <sup>3</sup>
Suite 504 <a href="#">Take a Tour</a>	1,557 RSF
Suite 506	4,138 RSF <sup>3</sup>

<sup>3</sup>can be combined for a total of 9,969 SF

### Sixth Floor

Suite 601	1,342 RSF
Suite 604	1,359 RSF
Suite 607	2,422 RSF

### Seventh Floor

Suite 700	5,134 RSF
Suite 705	1,197 RSF
Suite 707	1,350 RSF <sup>4</sup>
Suite 708	1,035 RSF <sup>4</sup>

<sup>4</sup>can be combined for a total of 2,385 SF



For more information:

**Rebecca Ting, SIOR**

+1 856 234 9600  
rebecca.ting@naimertz.com

**Julie Kronfeld, SIOR**

+1 856 802 6516  
julie.kronfeld@naimertz.com

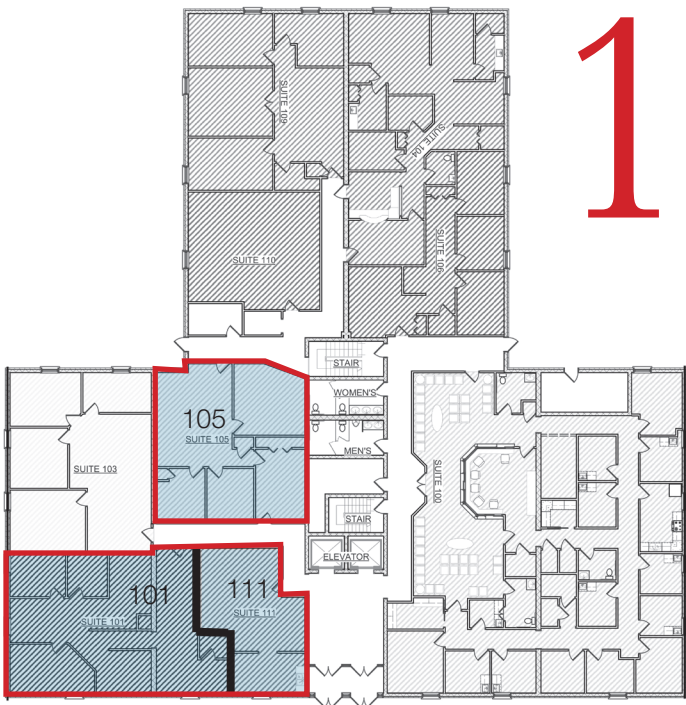


21 Roland Avenue  
Mount Laurel, New Jersey  
+1 856 234 9600

[naimertz.com](http://naimertz.com)



Floorplans  
Sentry Office Plaza • Westmont, NJ

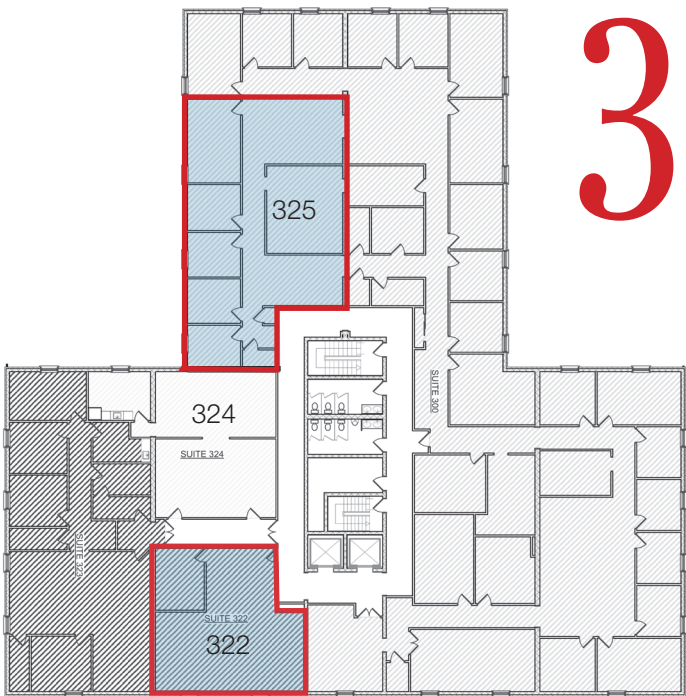


1

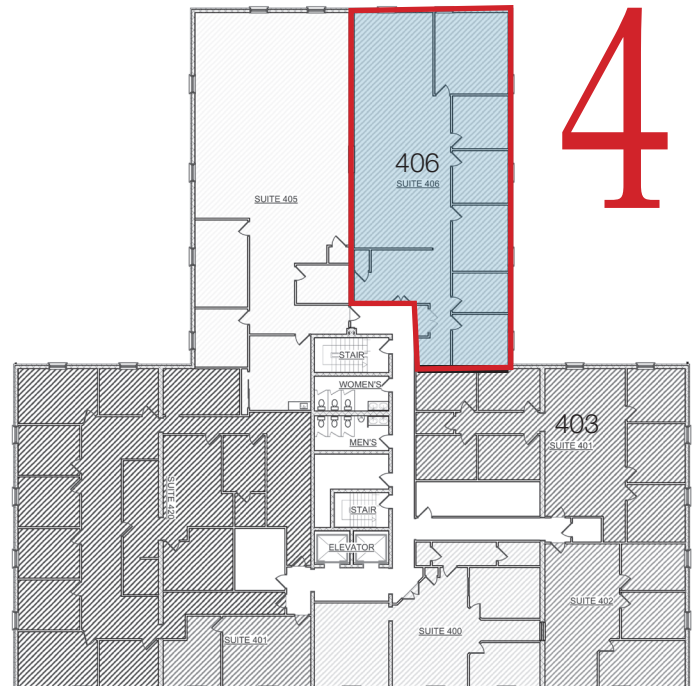


2

Available Suites Shaded Blue (Refer to Current Availabilities table for SF)



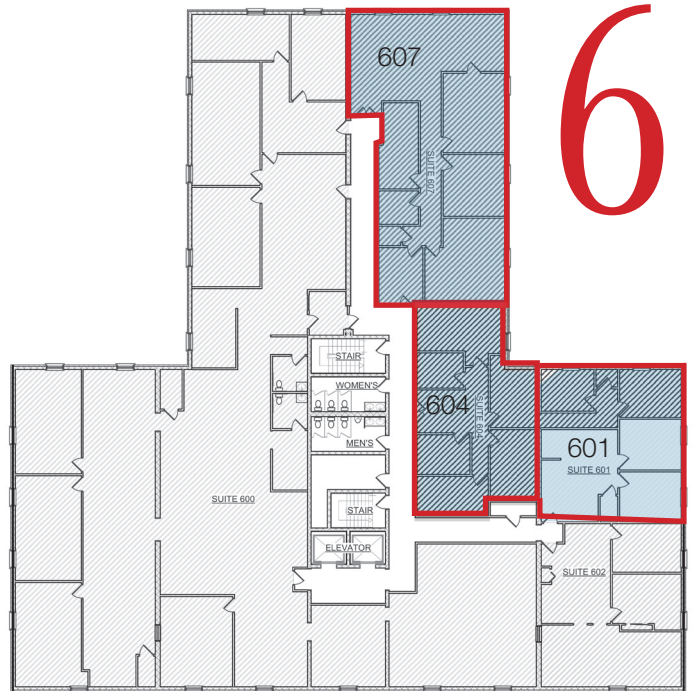
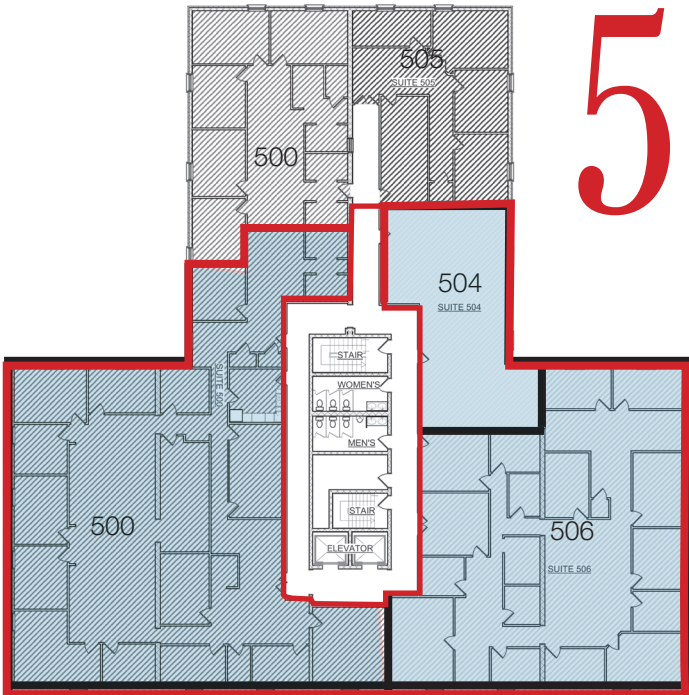
3



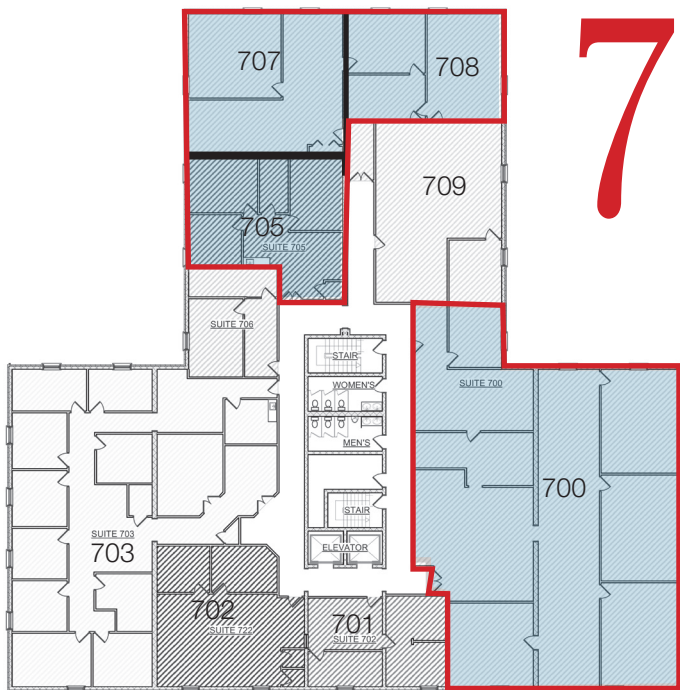
4



Floorplans  
Sentry Office Plaza • Westmont, NJ



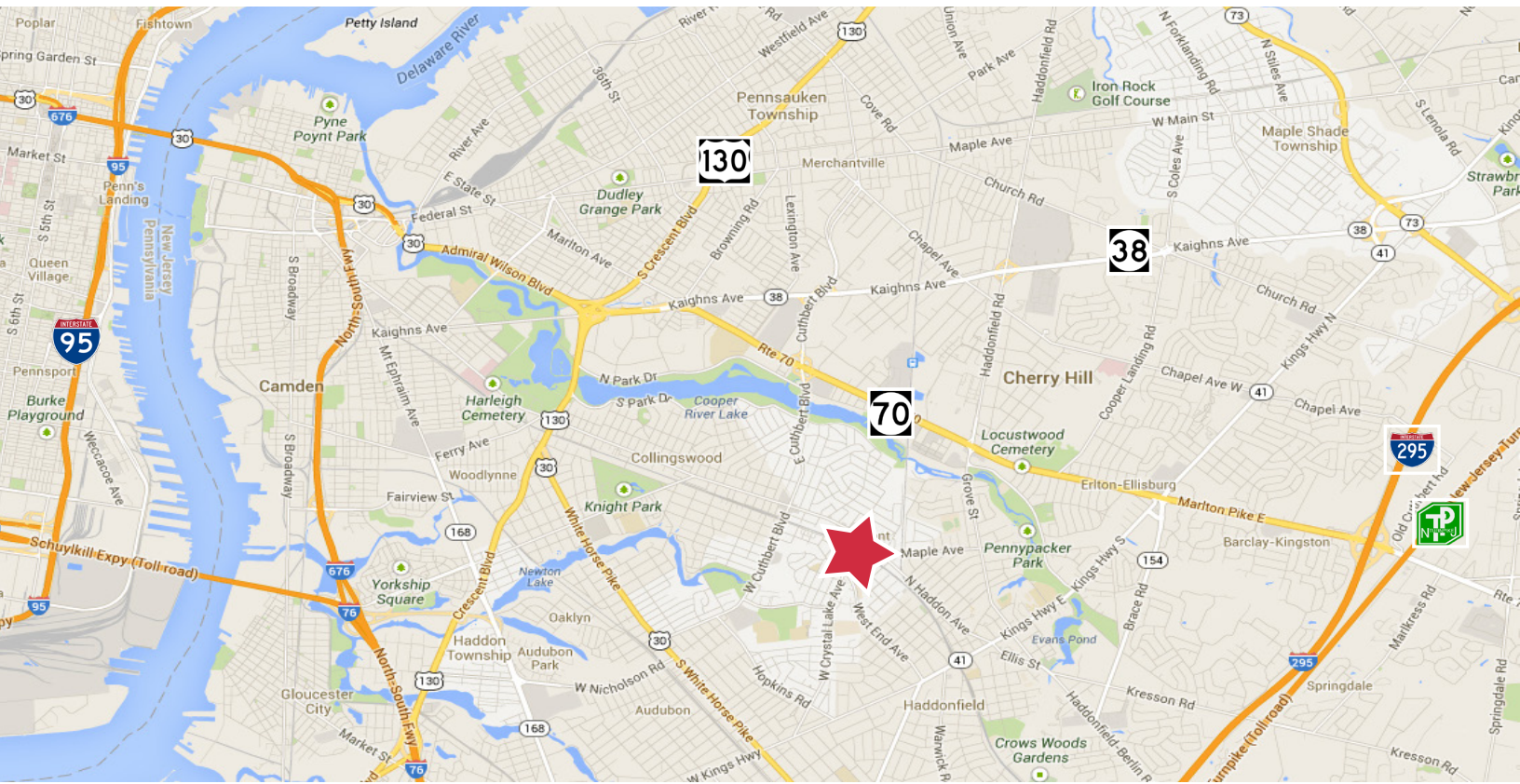
Available Suites Shaded Blue (Refer to Current Availabilities table for SF)





# Location

## Sentry Office Plaza • Westmont, NJ



### Location Information

- Easy access to both Routes 130, 41 & 70
- 8 miles from Center City Philadelphia via Ben Franklin Bridge
- 3 miles to I-295 (Exit 32)
- Less than a 5 minute walk to the Westmont PATCO station
- Located on the 450 and 451 NJ Transit bus routes

For more information:

**Rebecca Ting, SIOR**

+1 856 234 9600 • rebecca.ting@naimertz.com

**Julie Kronfeld, SIOR**

+1 856 802 6516 • julie.kronfeld@naimertz.com

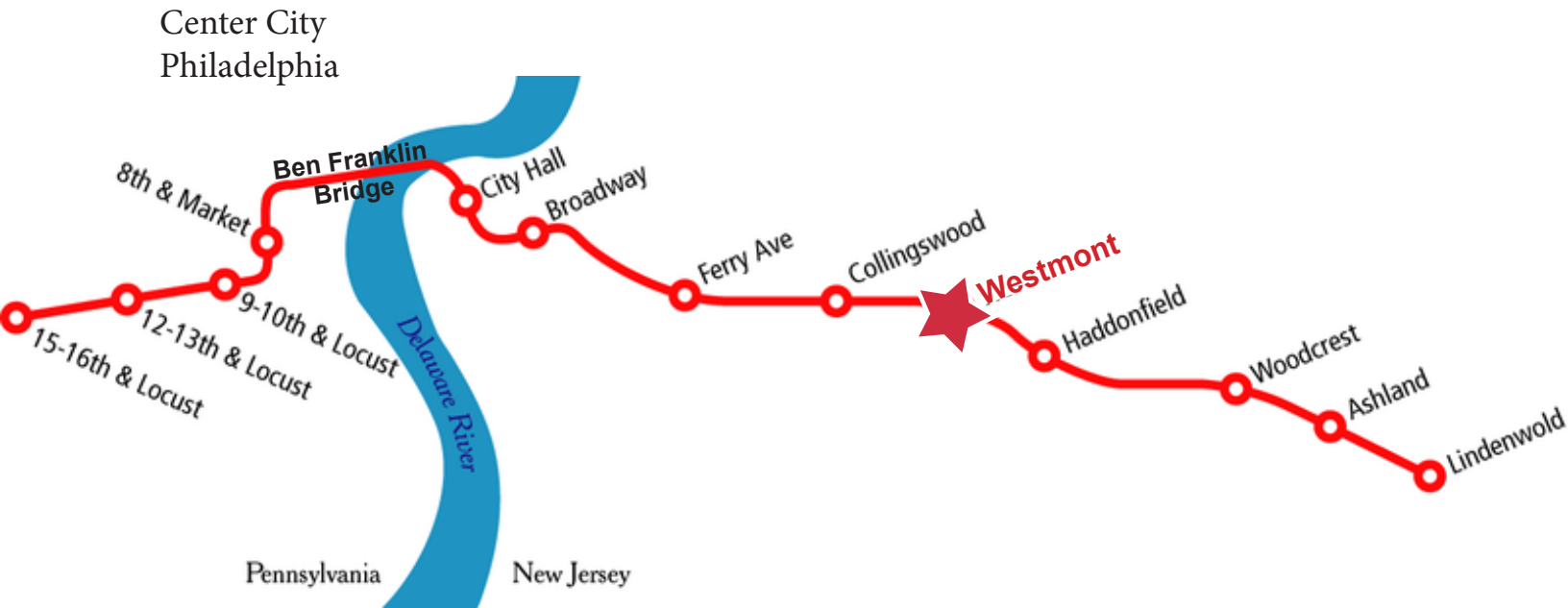
### Nearby Amenities



21 Roland Avenue  
 Mount Laurel, New Jersey  
 +1 856 234 9600  
[naimertz.com](http://naimertz.com)

## Location

Sentry Office Plaza • Westmont, NJ



## Location Information

- Only 13 minutes from Westmont to Center City 8th & Market station
- 19 Minutes to 15th & Locust
- Less than a 5 minute walk to the Westmont PATCO station
- Round trip fare only \$5.20

For more information:

**Rebecca Ting, SIOR**

+1 856 234 9600 • [rebecca.ting@naimertz.com](mailto:rebecca.ting@naimertz.com)

**Julie Kronfeld, SIOR**

+1 856 802 6516 • [julie.kronfeld@naimertz.com](mailto:julie.kronfeld@naimertz.com)

