



2337 & 2358 Perimeter Park Dr. Chamblee, Georgia 30341



PROPERTY FEATURES

Grade level drive-ins

City of Chamblee

Attractively landscaped in park-like setting

Parking Ratio: 2.5/1,000 SF

LOCATION HIGHLIGHTS

Easy access to I-285, I-85, and Highway 141

Conveniently located 3.5 miles from Perimeter Mall area, as well as a large selection of dining, shopping, and professional service options

Close proximity to both Doraville and Chamblee Marta stations

Abundant multi-housing developments within walking distance

Mark Verryth

Vice President
404 812 4034
mverryth@naibg.com

Kayte Giralt

Vice President
404 812 4017
kgiralt@naibg.com

Information is deemed from reliable sources. No warranty is made as to its accuracy.

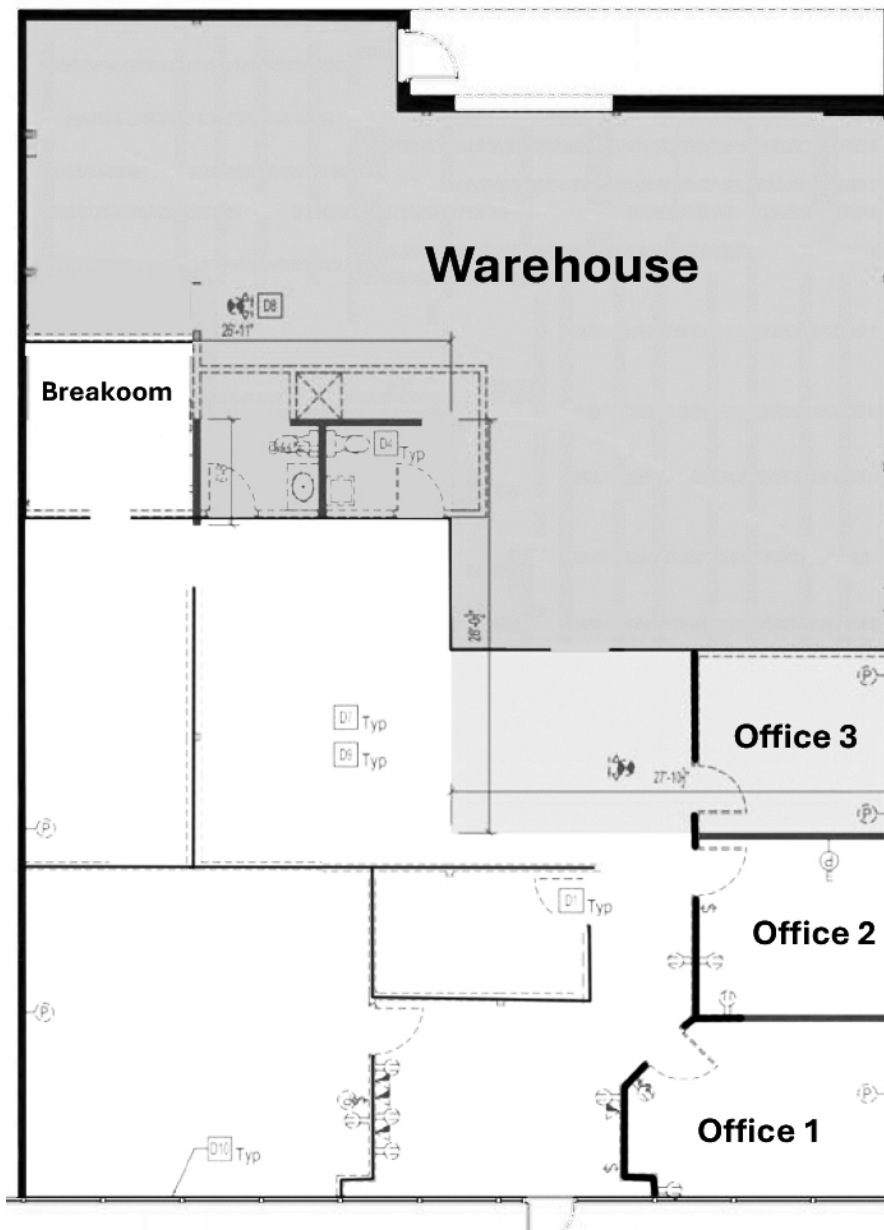
2337 PERIMETER PARK DR.

SUITE 215

4,417 RSF

Spec Suite Delivering Q4 2024

1 Grade level Drive-in Door



Mark Verryth

Vice President
404 812 4034
mverryth@naibg.com

Kayte Giralt

Vice President
404 812 4017
kgiralt@naibg.com

Information is deemed from reliable sources. No warranty is made as to its accuracy.

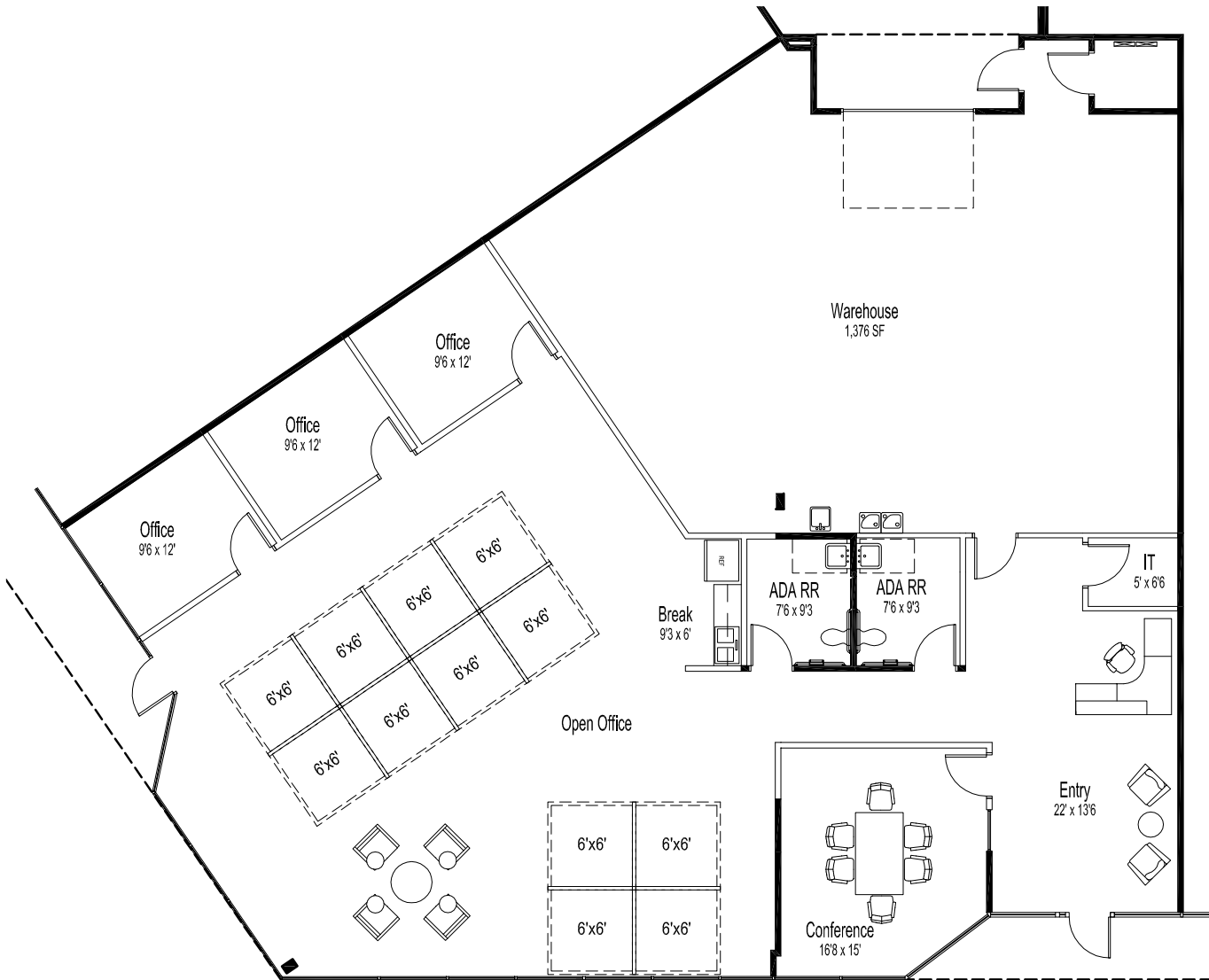
2358 PERIMETER PARK DR.

SUITE 350

4,514 RSF

Proposed Floor Plan

1 Grade level Drive-in Door



Mark Verryth

Vice President
404 812 4034
mverryth@naibg.com

Kayte Giralt

Vice President
404 812 4017
kgiralt@naibg.com

Information is deemed from reliable sources. No warranty is made as to its accuracy.