

FOR SALE

INDUSTRIAL BUILDING/LAND


-Lot lines are approximate.

**4.4 ACRES
AVAILABLE**

JUST SOLD

HWY 62 WEST

PRINCETON, KY 42445

 BLOCK+LOT

ADAM BOARDMAN
859.338.8243
adam@balrealestate.com



01: EXECUTIVE SUMMARY

HWY 62 WEST, PRINCETON



PROPERTY DESCRIPTION

Located on Hwy 62. West just 7.5 miles from Eddyville, KY and 4 miles from Princeton, KY, this property offers a number of potential uses. This property consists of a 12,700 SF industrial warehouse on 4.4 acres. The close proximity to the Eddyville Riverport and the I24/I69 interchange makes this property an ideal long-term investment for the rapidly growing commerce in the area. The Eddyville Riverport Authority recently secured a grant for long term improvements to its facility .

PROPERTY HIGHLIGHTS

- Large flexible 12,700 SF industrial building
- 4.4 acres for potential expansion and yard storage
- Property located adjacent to the Wendell H. Ford Western Kentucky Parkway
- Located roughly 7.5 miles from the Eddyville Riverport
- The site is 10 miles from the I-24/I-69 Interchange which is heavily trafficked and a main route between St. Louis, MO and Nashville, TN.

[CLICK HERE FOR DRONE VIDEO](#)



12,700 SF
4.4 ACRES



\$475,000



NO
ZONING

02: PROPERTY OVERVIEW

ADDITIONAL PHOTOS



HWY 62 WEST, PRINCETON

adam@balrealestate.com

859.338.8243

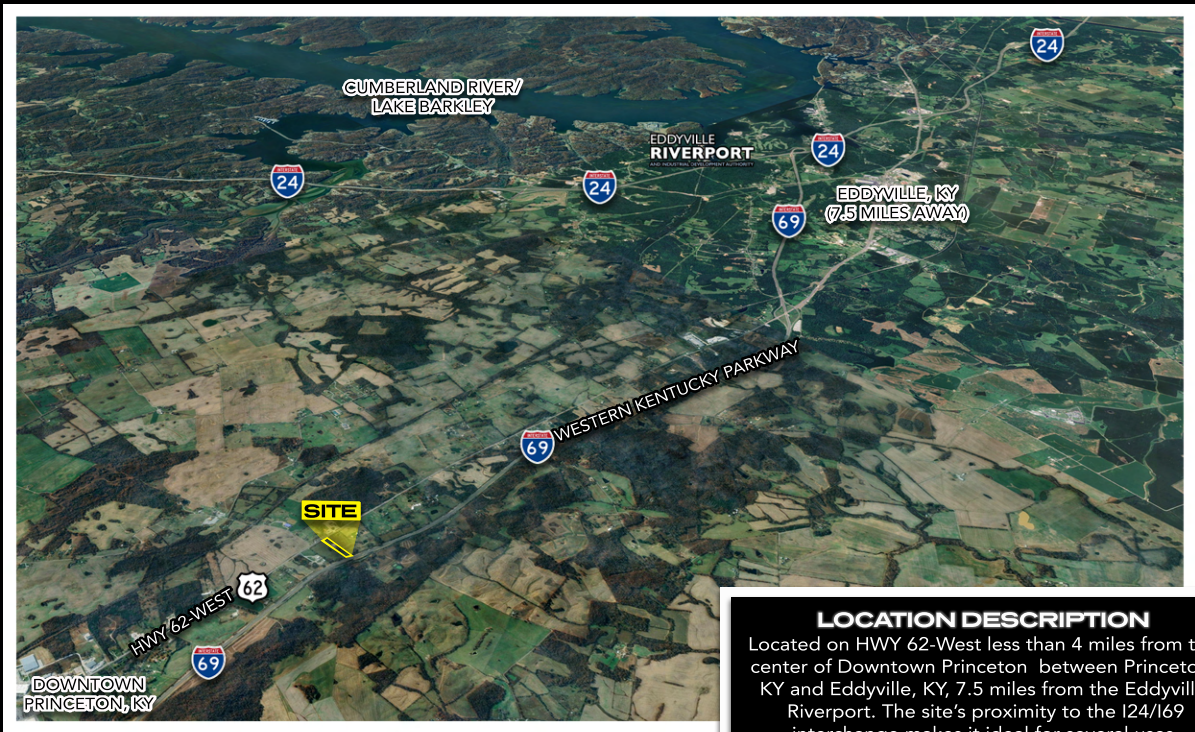


BLOCK+LOT

3

03: LOCATION INSIGHTS

AERIAL
HWY 62 WEST, PRINCETON



LOCATION DESCRIPTION

Located on HWY 62-West less than 4 miles from the center of Downtown Princeton between Princeton, KY and Eddyville, KY, 7.5 miles from the Eddyville Riverport. The site's proximity to the I24/I69 interchange makes it ideal for several uses.