

31771 SHERMAN DRIVE  
MADISON HEIGHTS, MICHIGAN

INDUSTRIAL FOR SALE  
13,969 Square Feet Available



**SIGNATURE  
ASSOCIATES**  
KNOW SIGNATURE | KNOW RESULTS



## PROPERTY FEATURES

- 13,969 square feet available
- 1,200 square feet of office
- 16'8" clear height
- (1) 12' x 14' grade level doors
- 2000 amps, 227/480 volts power
- Air-conditioning, buss duct, skylights, epoxy floors, and heavy power
- 40 tons of rooftop AC in shop
- Air lines throughout
- Sale Price: \$1,750,000 (\$125.28/sq. ft.)



For more information, please contact:

**PAUL HOGE**  
(248) 948 0103

[paulhoge@signatureassociates.com](mailto:paulhoge@signatureassociates.com)

**JOHN DROZE**  
(248) 948 4191

[jdroze@signatureassociates.com](mailto:jdroze@signatureassociates.com)

**GRANT BRUCE**  
(248) 948 4188

[gbruce@signatureassociates.com](mailto:gbruce@signatureassociates.com)

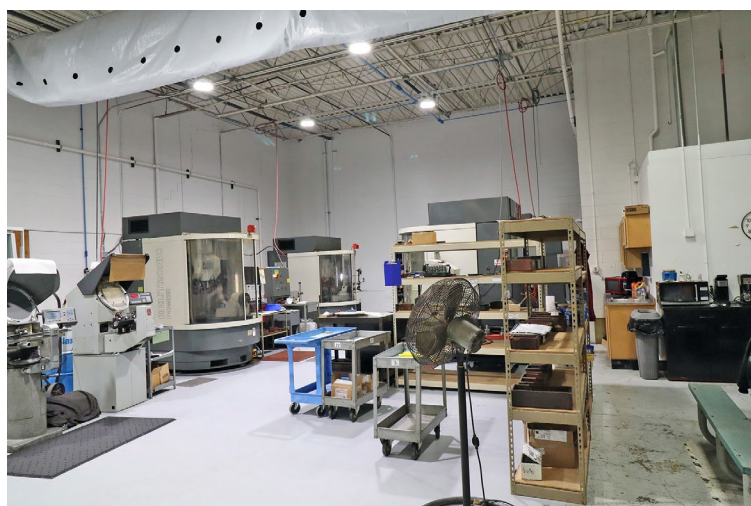
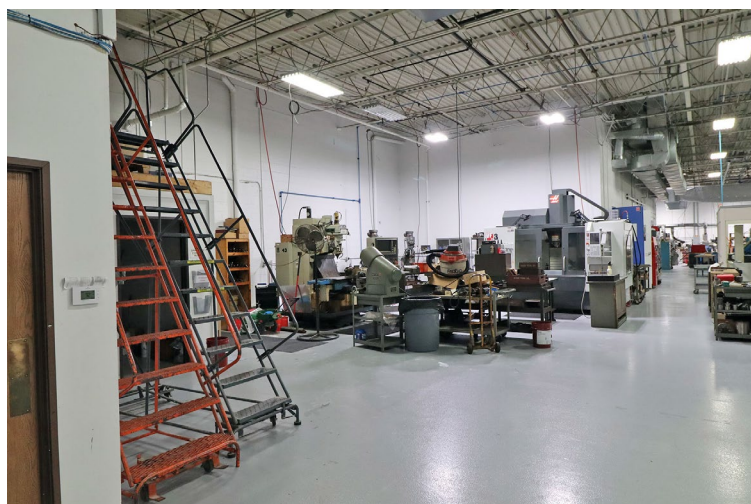


# 31771 Sherman Drive – Madison Heights, Michigan

## Industrial For Sale

13,969  
Square Feet  
AVAILABLE

### Interior Photos



For more information, please contact:

**PAUL HOGE**  
(248) 948 0103

**JOHN DROZE**  
(248) 948 4191

**GRANT BRUCE**  
(248) 948 4188

**SIGNATURE ASSOCIATES**  
One Towne Square, Suite 1200  
Southfield, MI 48076  
[www.signatureassociates.com](http://www.signatureassociates.com)

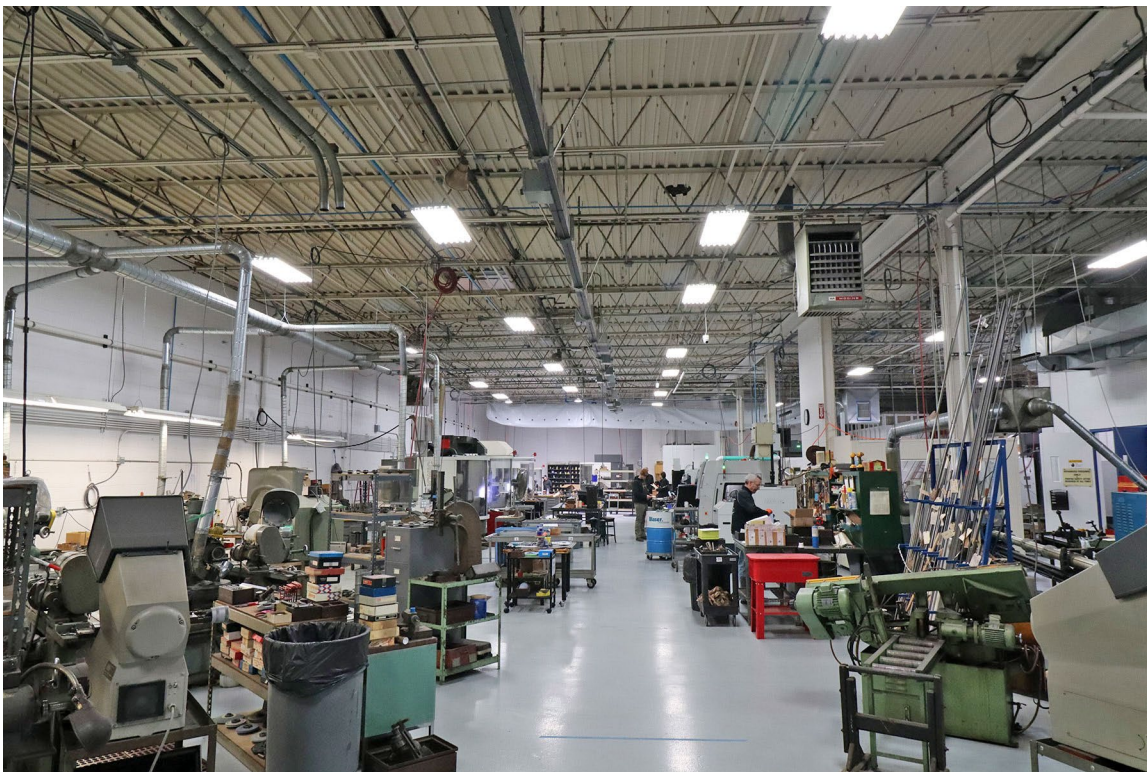
Information is subject to verification and no liability for errors or omissions is assumed. Price is subject to change and listing withdrawal.



# 31771 Sherman Drive – Madison Heights, Michigan

## Industrial For Sale

13,969  
Square Feet  
AVAILABLE



For more information, please contact:

**PAUL HOGE**  
(248) 948 0103

**JOHN DROZE**  
(248) 948 4191

**GRANT BRUCE**  
(248) 948 4188

**SIGNATURE ASSOCIATES**  
One Towne Square, Suite 1200  
Southfield, MI 48076  
[www.signatureassociates.com](http://www.signatureassociates.com)

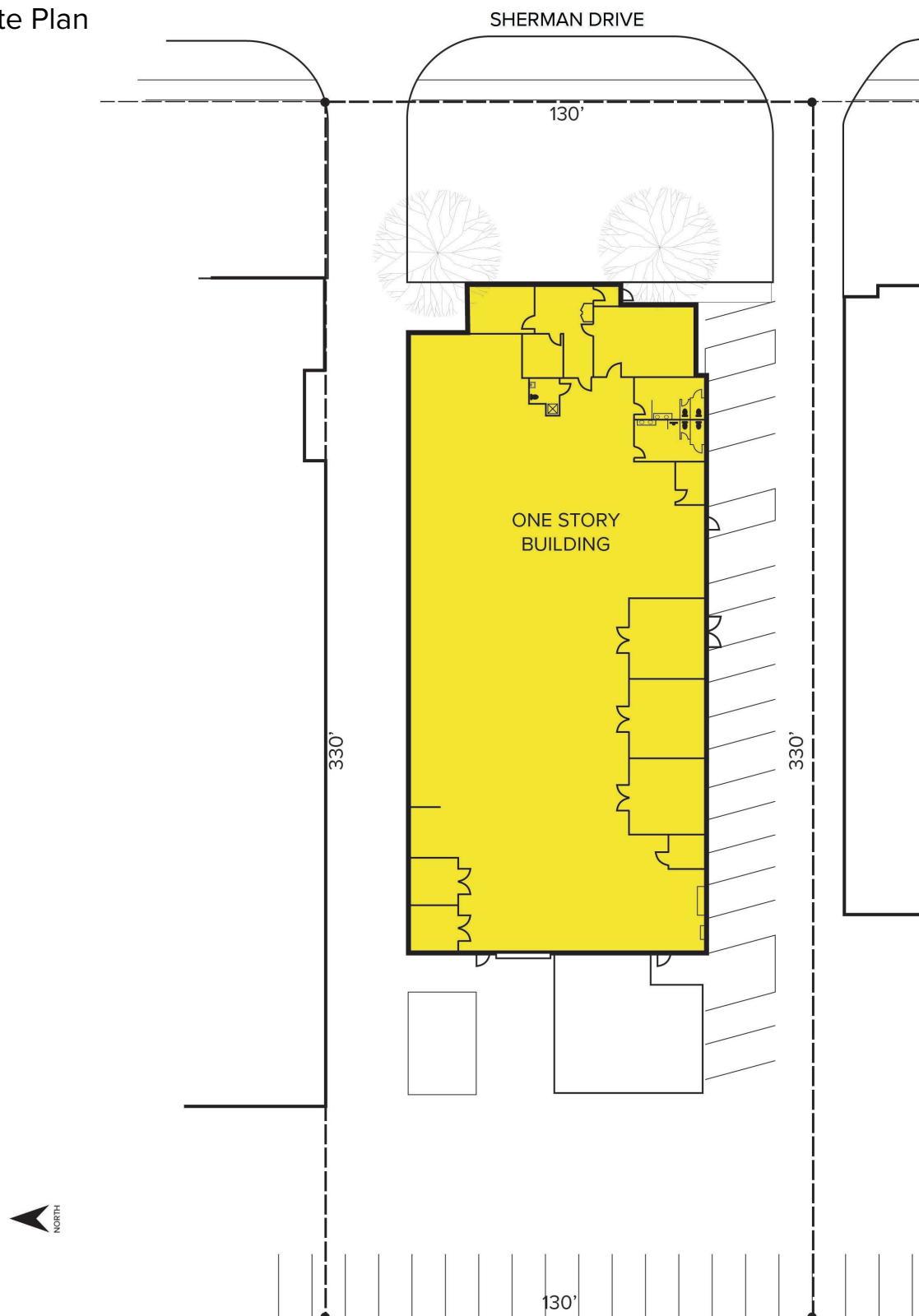
Information is subject to verification and no liability for errors or omissions is assumed. Price is subject to change and listing withdrawal.

# 31771 Sherman Drive – Madison Heights, Michigan

## Industrial For Sale

13,969  
Square Feet  
AVAILABLE

### Site Plan



For more information, please contact:

**PAUL HOGE**  
(248) 948 0103

**JOHN DROZE**  
(248) 948 4191

**GRANT BRUCE**  
(248) 948 4188

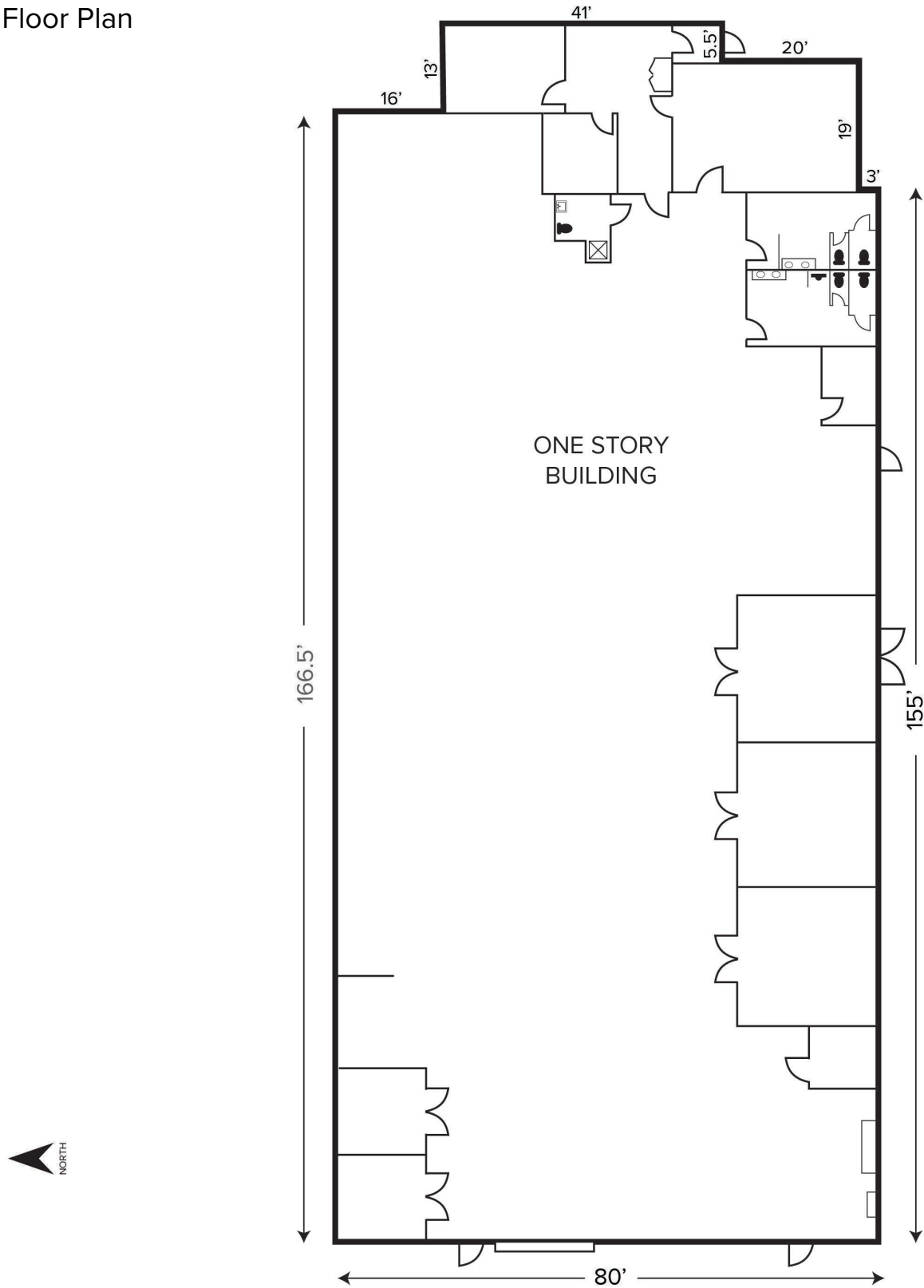
**SIGNATURE ASSOCIATES**  
One Towne Square, Suite 1200  
Southfield, MI 48076  
[www.signatureassociates.com](http://www.signatureassociates.com)

Information is subject to verification and no liability for errors or omissions is assumed. Price is subject to change and listing withdrawal.

31771 Sherman Drive – Madison Heights, Michigan  
Industrial For Sale

13,969  
Square Feet  
AVAILABLE

Floor Plan



For more information, please contact:

**PAUL HOGE**  
(248) 948 0103

**JOHN DROZE**  
(248) 948 4191

**GRANT BRUCE**  
(248) 948 4188

**SIGNATURE ASSOCIATES**  
One Towne Square, Suite 1200  
Southfield, MI 48076  
[www.signatureassociates.com](http://www.signatureassociates.com)

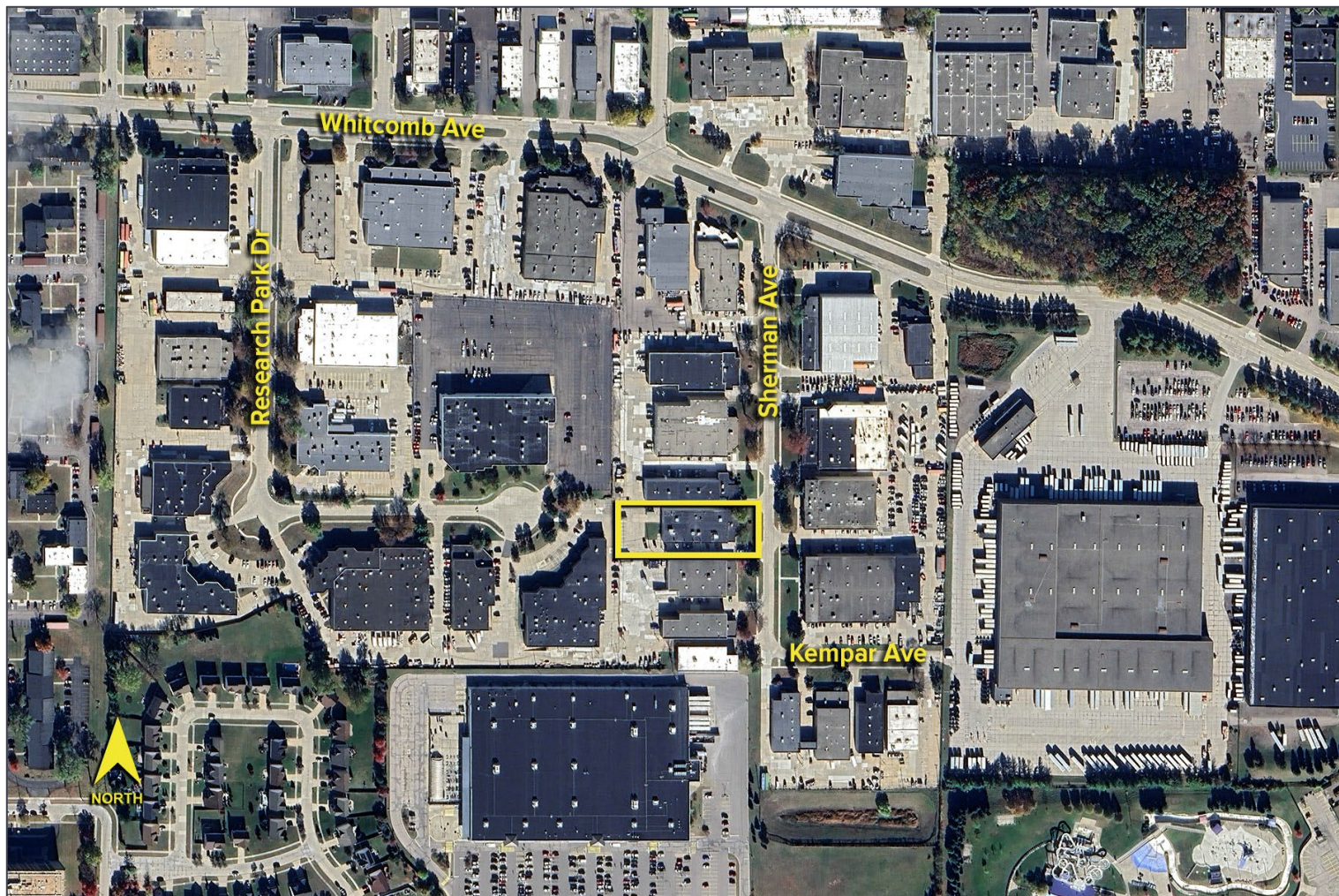


# 31771 Sherman Drive – Madison Heights, Michigan

## Industrial For Sale

13,969  
Square Feet  
AVAILABLE

Aerial



For more information, please contact:

**PAUL HOGE**  
(248) 948 0103

**JOHN DROZE**  
(248) 948 4191

**GRANT BRUCE**  
(248) 948 4188

**SIGNATURE ASSOCIATES**  
One Towne Square, Suite 1200  
Southfield, MI 48076  
[www.signatureassociates.com](http://www.signatureassociates.com)

Information is subject to verification and no liability for errors or omissions is assumed. Price is subject to change and listing withdrawal.