

# RARE FREE STANDING INDUSTRIAL BUILDING WITH ENCLOSED DOCK FOR LEASE



±14,375 SF OFFICE/WAREHOUSE ON ±1.18 AC

**2845 VERNE ROBERTS CIRCLE**  
ANTIOCH, CA 94509



# 2845 VERNE ROBERTS CIRCLE

## ANTIOCH, CA 94509

### Property Summary

- ±14,375 SF Office/Warehouse on ±1.18 Acres
- ±2,000 SF Office
- Clear Span Functional Warehouse
- One (1) Enclosed Dock-Level Loading Platform
- Three (3) Grade-Level Doors
- ±18' Warehouse Clearance
- Fully Sprinklered
- 600 Amps, 277/480V, 3-Phase (Tenant to Confirm)
- Secured & Fenced Paved Yard Area
- Concrete Tilt-Up Construction
- Built in 2006

*Contact listing broker for lease information*





**2845 VERNE ROBERTS CIRCLE**  
**ANTIOCH, CA 94509**



# 2845 VERNE ROBERTS CIRCLE

ANTIOCH, CA 94509

## Site Plan



PITTSBURG-ANTIOCH HIGHWAY

W 10TH ST

VERNE ROBERTS CIRCLE

● *Grade-Level Door*

ENCLOSED DOCK PLATFORM

±14,375 SF

WAREHOUSE

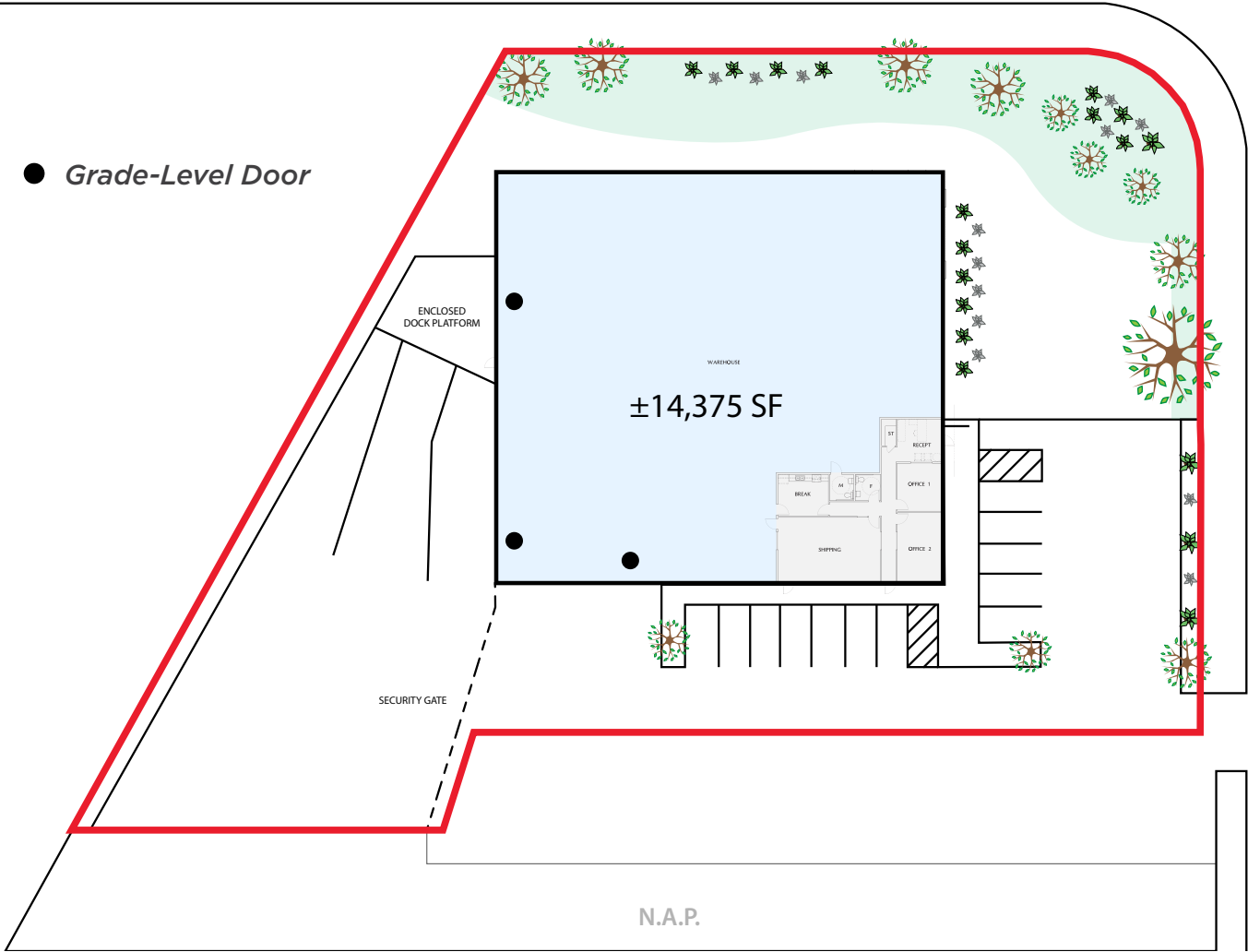
RECEIVING

OFFICE 1

OFFICE 2

SECURITY GATE

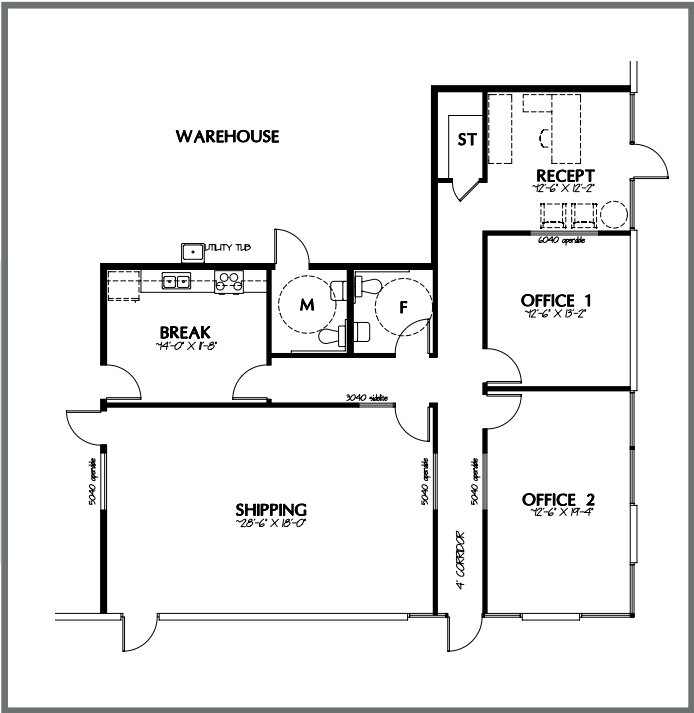
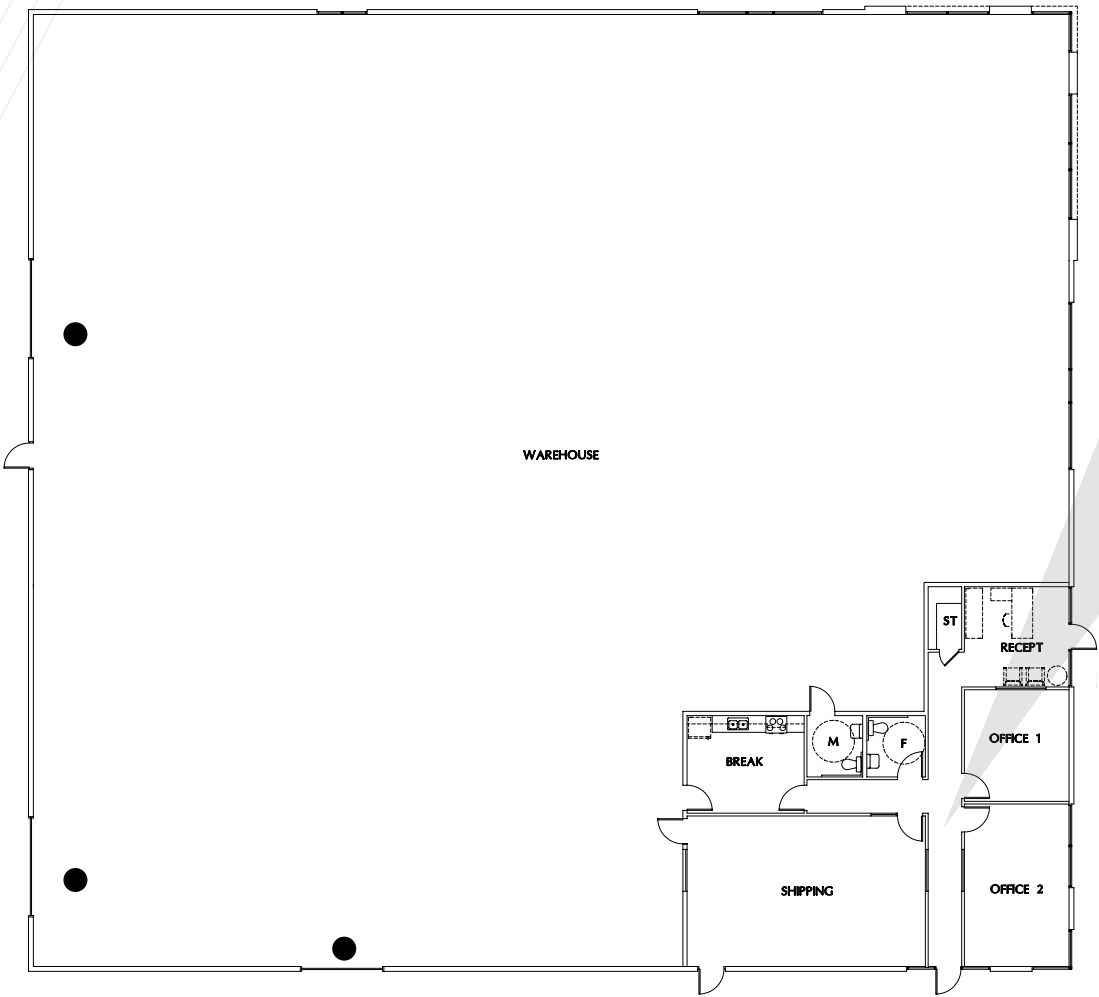
N.A.P.



# 2845 VERNE ROBERTS CIRCLE

ANTIOCH, CA 94509

## Floor Plans



● *Grade-Level Door*



# 2845 VERNE ROBERTS CIRCLE

ANTIOCH, CA 94509







**2845 VERNE ROBERTS CIRCLE**  
**ANTIOCH, CA 94509**

VERNE ROBERTS CIR

ANTIOCH - PITTSBURG HWY

**FOR MORE INFORMATION, CONTACT:**

**KRIS HAGAR, SIOR**

Senior Director  
+1 925 627 2497  
kris.hagar@cushwake.com  
Lic #02009499

**TYLER EPTING**

Managing Director  
+1 925 627 2897  
tyler.epting@cushwake.com  
Lic #01317533

1333 N California Blvd, Suite 500  
Walnut Creek, CA 94596

[cushmanwakefield.com](http://cushmanwakefield.com)

©2025 Cushman & Wakefield. All rights reserved. The information contained in this communication is strictly confidential. This information has been obtained from sources believed to be reliable but has not been verified. NO WARRANTY OR REPRESENTATION, EXPRESS OR IMPLIED, IS MADE AS TO THE CONDITION OF THE PROPERTY (OR PROPERTIES) REFERENCED HEREIN OR AS TO THE ACCURACY OR COMPLETENESS OF THE INFORMATION CONTAINED HEREIN, AND SAME IS SUBMITTED SUBJECT TO ERRORS, OMISSIONS, CHANGE OF PRICE, RENTAL OR OTHER CONDITIONS, WITHDRAWAL WITHOUT NOTICE, AND TO ANY SPECIAL LISTING CONDITIONS IMPOSED BY THE PROPERTY OWNER(S). ANY PROJECTIONS, OPINIONS OR ESTIMATES ARE SUBJECT TO UNCERTAINTY AND DO NOT SIGNIFY CURRENT OR FUTURE PROPERTY PERFORMANCE.

