

459 – 499 S. MAIN STREET
SUITE #485
PLYMOUTH, MICHIGAN

OFFICE FOR LEASE
827 Square Feet Available



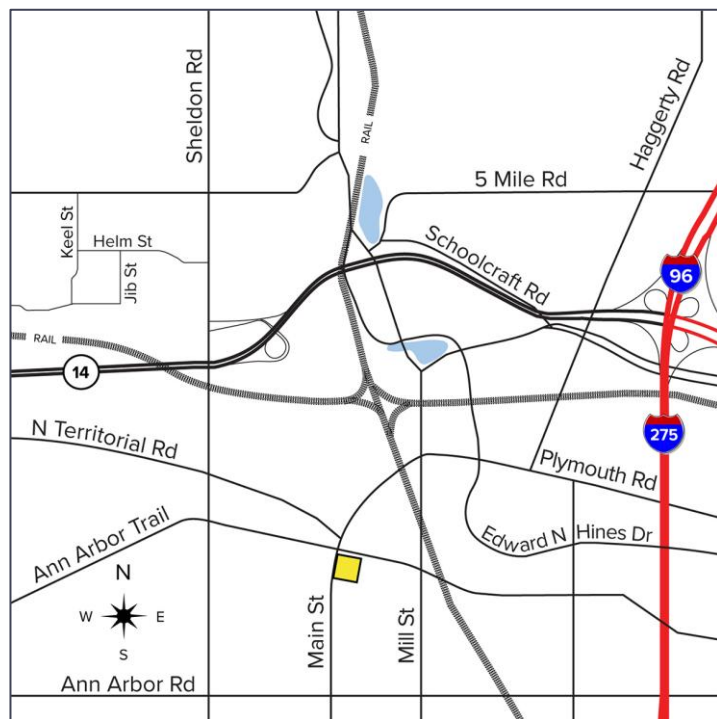
**SIGNATURE
ASSOCIATES**
KNOW SIGNATURE | KNOW RESULTS

IN THE HEART OF PLYMOUTH



PROPERTY FEATURES

- Highly upgraded 827 square foot office suite
- Convenient storefront space in the heart of popular downtown Plymouth
- On-site weekday parking and property management
- Restaurants and shopping nearby
- Lease rate: \$1,500/month E+J

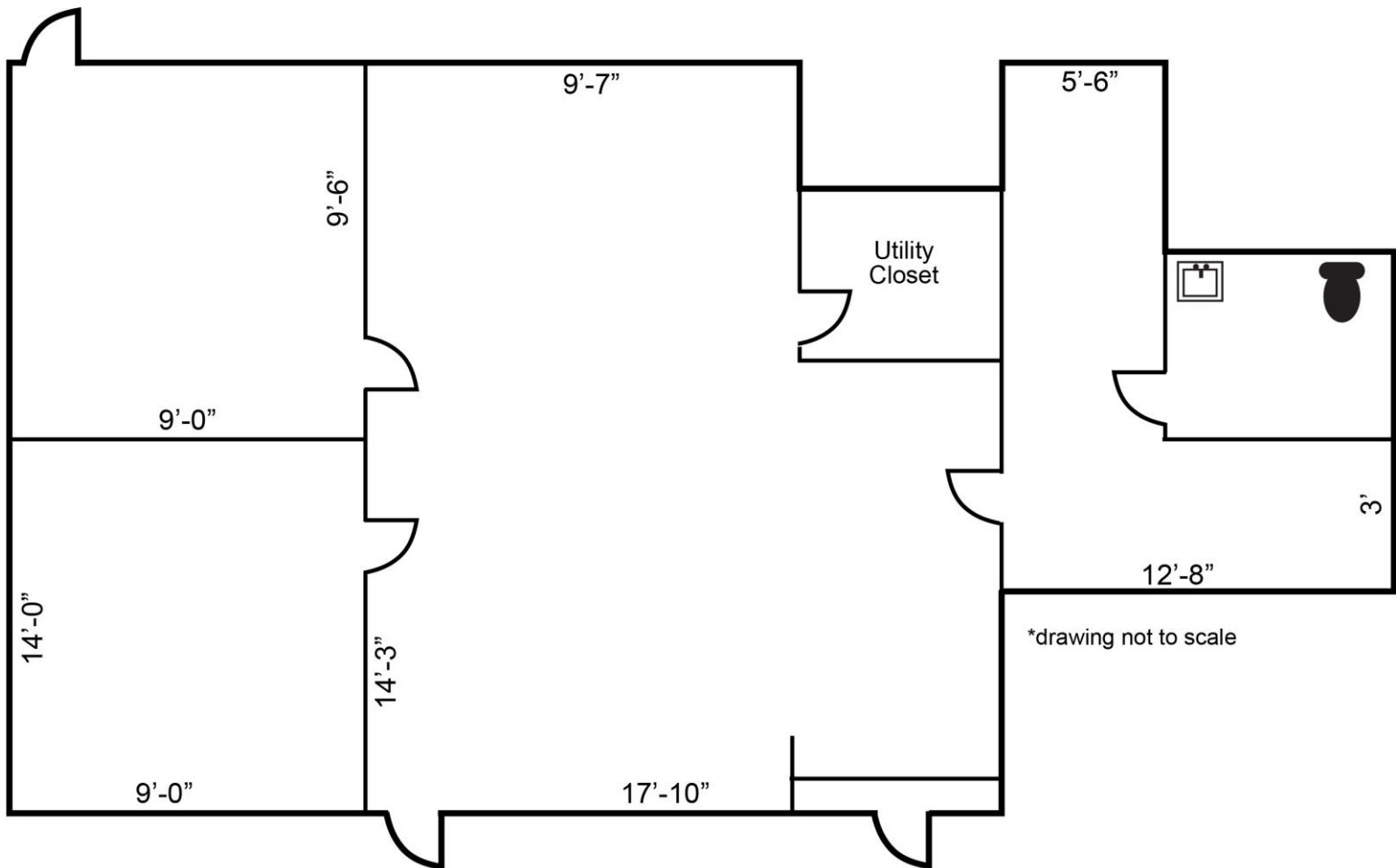


For more information, please contact:

CHRIS SECONTINE
(248) 799 3174
csecontine@signatureassociates.com

SIGNATURE ASSOCIATES
One Towne Square, Suite 1200
Southfield, MI 48076
www.signatureassociates.com

Floor Plan – Suite #485



For more information, please contact:

CHRIS SECONTINE
(248) 799 3174
csecontine@signatureassociates.com

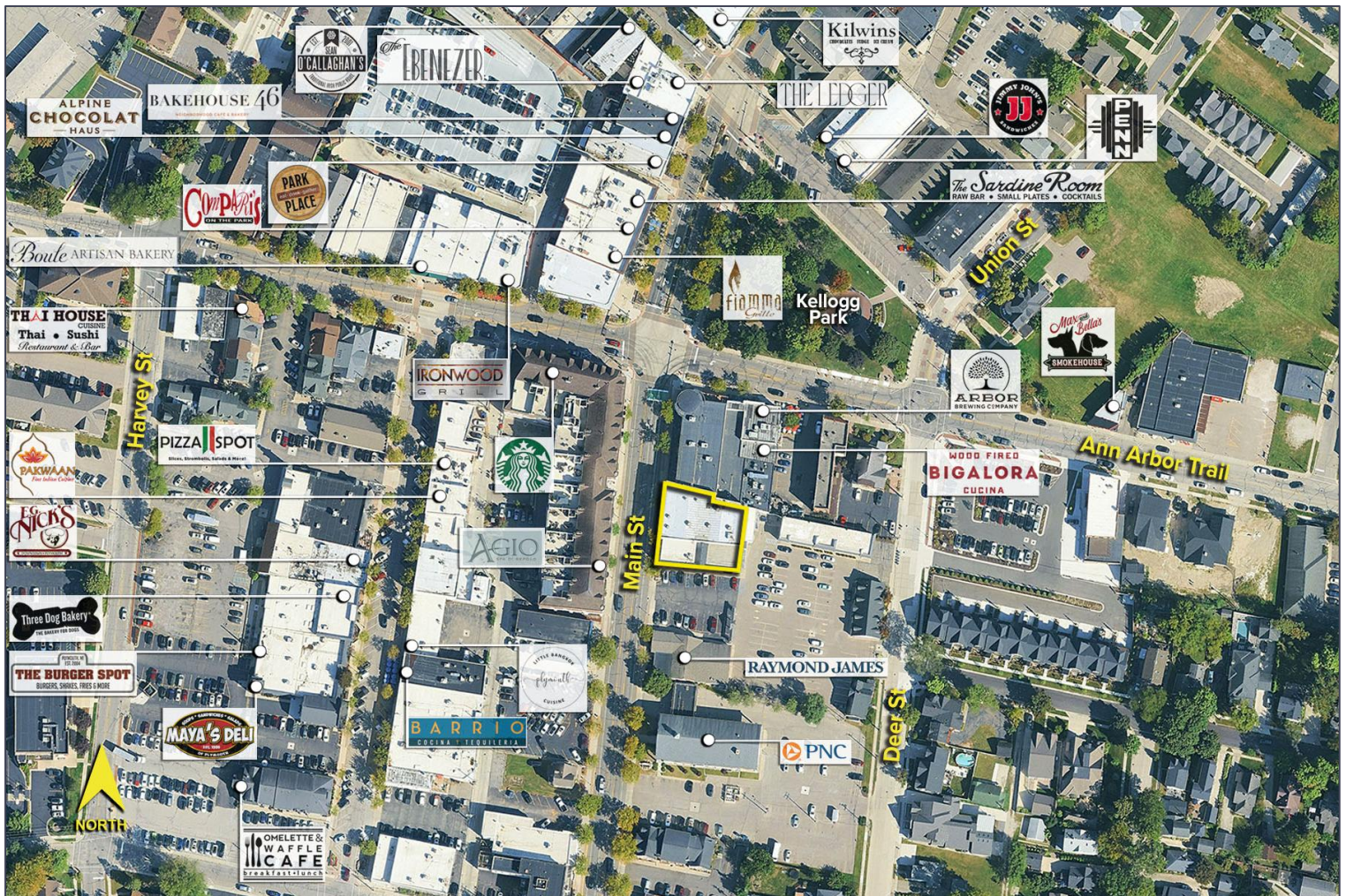
SIGNATURE ASSOCIATES
One Towne Square, Suite 1200
Southfield, MI 48076
www.signatureassociates.com

459 – 499 S. Main Street – Plymouth, Michigan

Office For Lease

827
Square Feet
AVAILABLE

Aerial



For more information, please contact:

CHRIS SECONTINE
(248) 799 3174
csecontine@signatureassociates.com

SIGNATURE ASSOCIATES
One Towne Square, Suite 1200
Southfield, MI 48076
www.signatureassociates.com

Information is subject to verification and no liability for errors or omissions is assumed. Price is subject to change and listing withdrawal.