

1395 NORTH HAYDEN ROAD

SCOTTSDALE, AZ
FOR LEASE



Property Highlights

- **Total Building SF:** 38,494 RSF
 - Available Suites:**
 - 1B:** 8,223 RSF
 - 2A:** 7,700 RSF
 - 2B:** 4,945 RSF
- **2A & 2B can be combined to 12,645 RSF**
- **Suites 2A & 2B have furniture available**
- **Easy access to the 101 & 202**
- **Rental Rate:** \$18.50 Modified Gross



Tom Jacobs
Senior Director
+1 602 224 4430
tom.weinhold@cushwake.com

2555 E Camelback Rd., Suite 400
Phoenix, AZ 85016
main +1 602 954 9000
fax +1 602 253 0528
cushmanwakefield.com

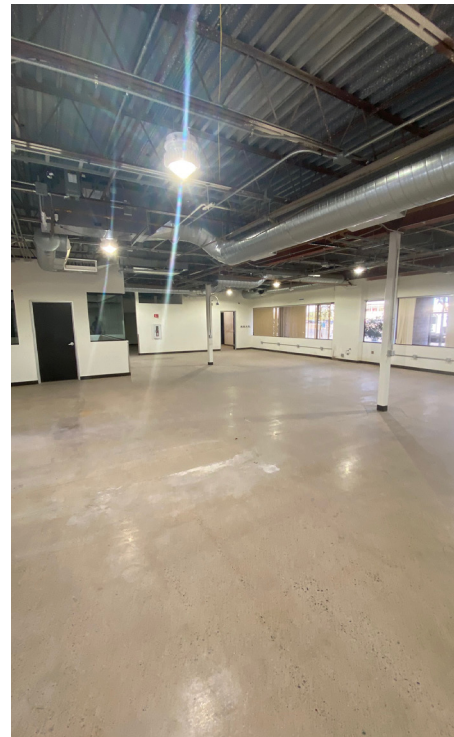
1395 NORTH HAYDEN ROAD

SCOTTSDALE, AZ
FOR LEASE



Suite 1B: 8,223 RSF

- Open area with polished concrete floors
- Reception area, conference room, 3 private offices and controller room
- Access to shared kitchen & training room
- Space can be used for lab



1395 NORTH HAYDEN ROAD

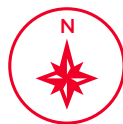
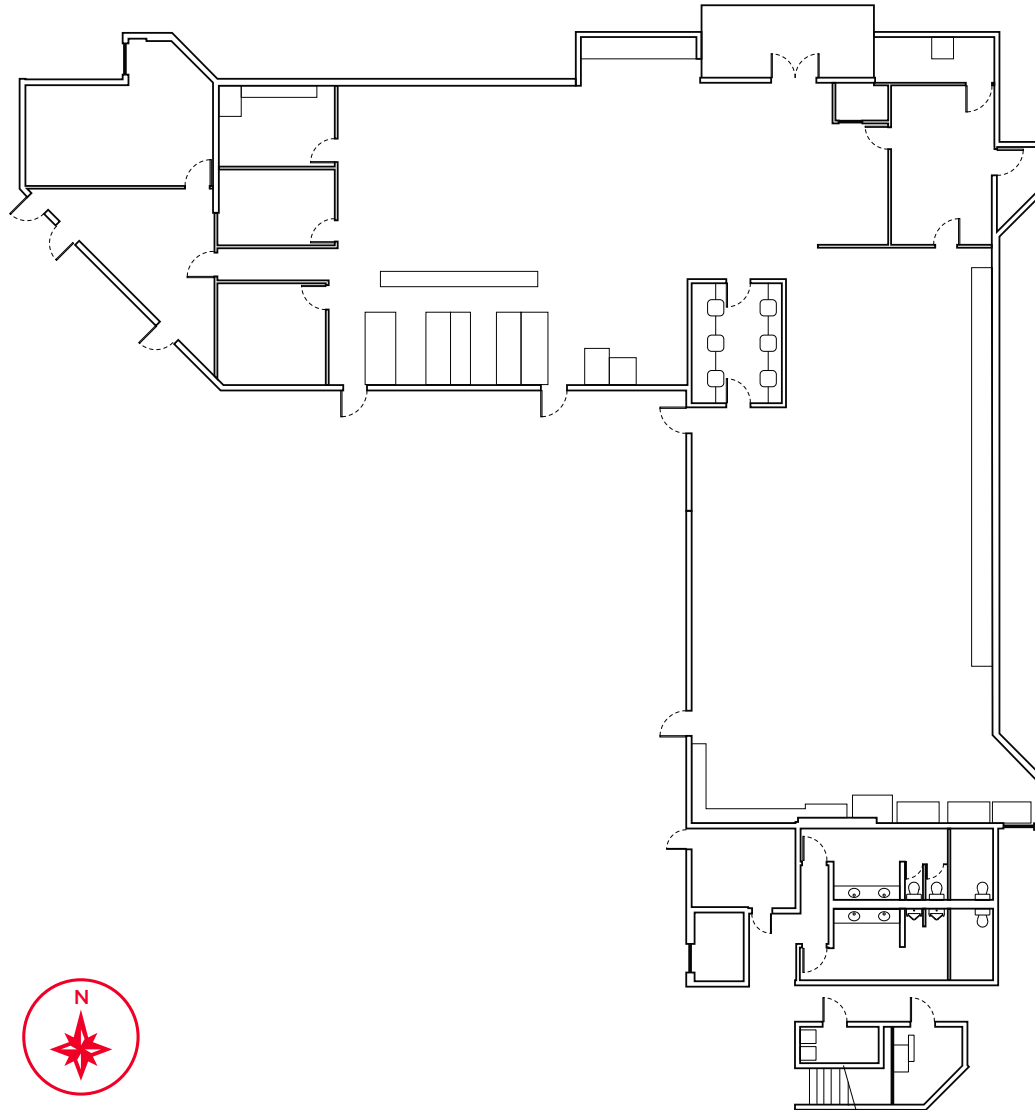
SCOTTSDALE, AZ

FOR LEASE



Floor Plan: Suite 1B

8,223 RSF



1395 NORTH HAYDEN ROAD

SCOTTSDALE, AZ

FOR LEASE



Suite 2A: 7,700 RSF

Can combine with 2B for 12,645 RSF

- Reception area
- 2 conference rooms
- 21 High wall cubes
- 18 Offices
 - 5 Hard walls with windows
 - 4 Interior
 - 8 Partition with windows
 - 1 Partition interior



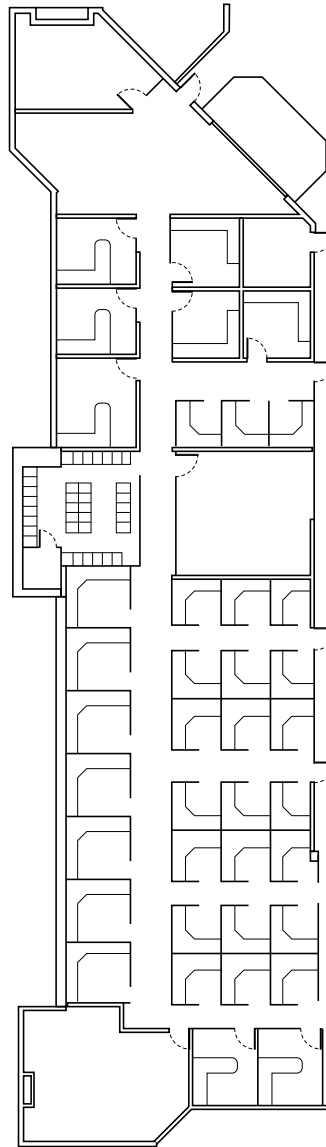
1395 NORTH HAYDEN ROAD

SCOTTSDALE, AZ

FOR LEASE



Floor Plan: Suite 2A 7,700 RSF



1395 NORTH HAYDEN ROAD

SCOTTSDALE, AZ
FOR LEASE



Suite 2B: 4,945 RSF Can combine with 2A for 12,645 RSF

- Reception area
- 11 Offices
 - 8 With windows
 - 3 Interior
- 10 Low wall cubes
- I.T. room



1395 NORTH HAYDEN ROAD

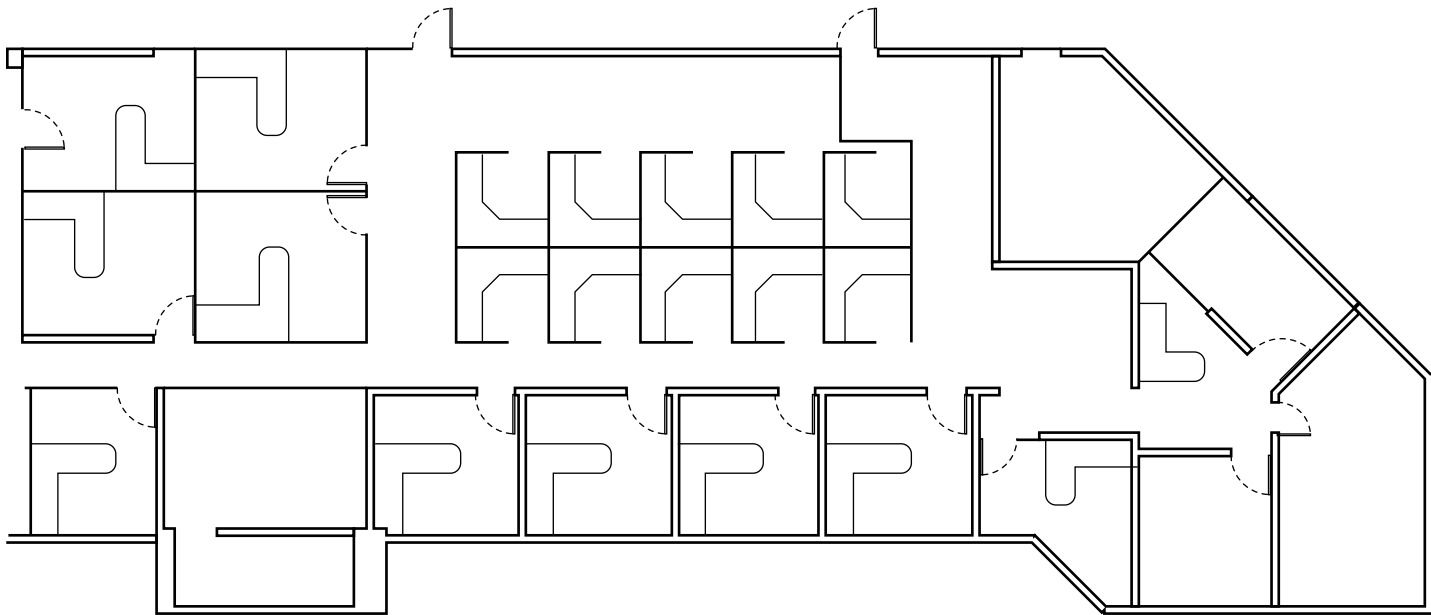
SCOTTSDALE, AZ

FOR LEASE



Floor Plan: Suite 2B

4,945 RSF



1395 NORTH HAYDEN ROAD
SCOTTSDALE, AZ
FOR LEASE



Additional Photos



Shared Kitchen



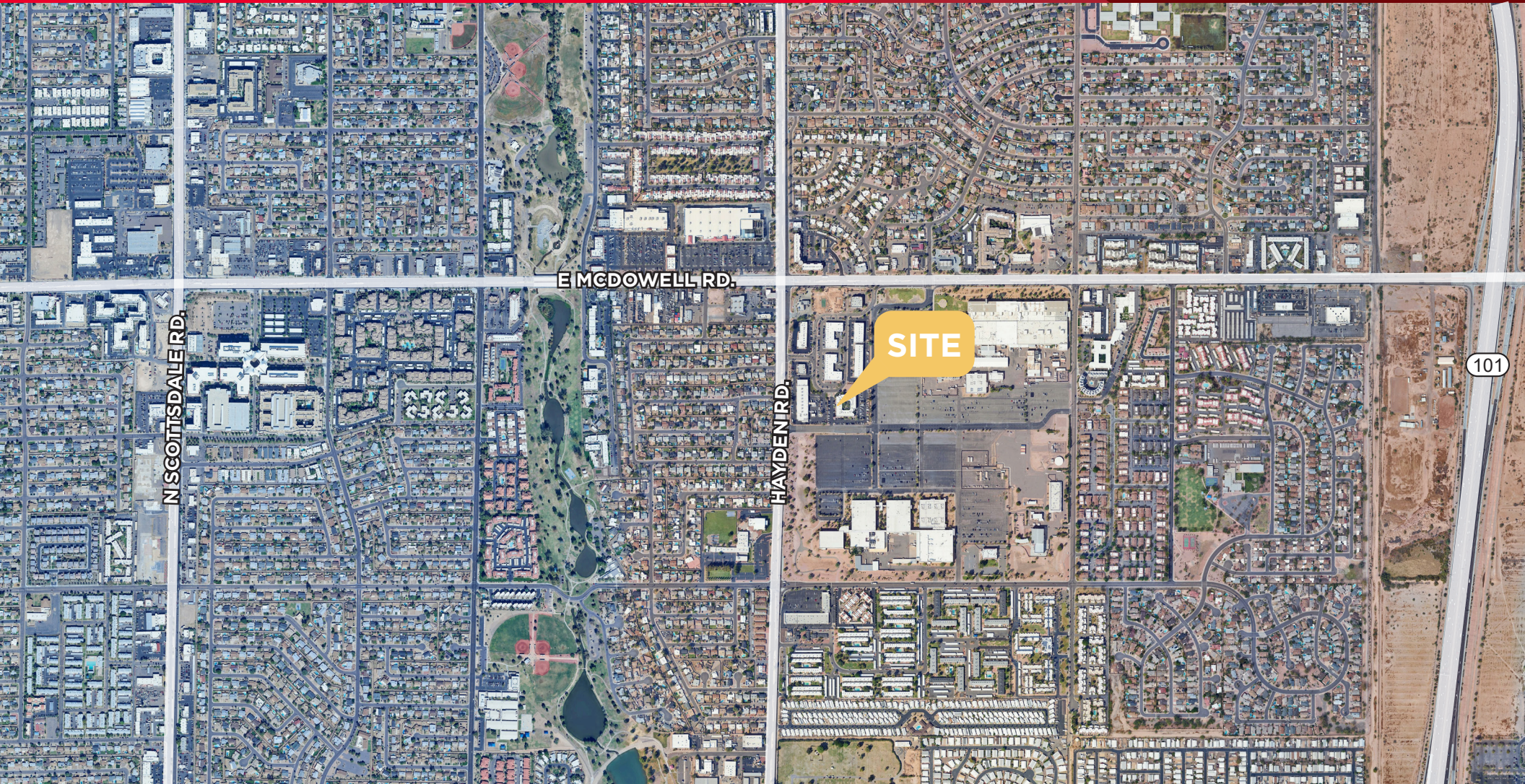
Training Room



Courtyard

1395 NORTH HAYDEN ROAD

SCOTTSDALE, AZ
FOR LEASE



Tom Jacobs
Senior Director
+1 602 224 4430
tom.weinhold@cushwake.com

2555 E Camelback Rd., Suite 400
Phoenix, AZ 85016
main +1 602 954 9000
fax +1 602 253 0528
cushmanwakefield.com

©2025 Cushman & Wakefield. All rights reserved. The information contained in this communication is strictly confidential. This information has been obtained from sources believed to be reliable but has not been verified. NO WARRANTY OR REPRESENTATION, EXPRESS OR IMPLIED, IS MADE AS TO THE CONDITION OF THE PROPERTY (OR PROPERTIES) REFERENCED HEREIN OR AS TO THE ACCURACY OR COMPLETENESS OF THE INFORMATION CONTAINED HEREIN, AND SAME IS SUBMITTED SUBJECT TO ERRORS, OMISSIONS, CHANGE OF PRICE, RENTAL OR OTHER CONDITIONS, WITHDRAWAL WITHOUT NOTICE, AND TO ANY SPECIAL LISTING CONDITIONS IMPOSED BY THE PROPERTY OWNER(S). ANY PROJECTIONS, OPINIONS OR ESTIMATES ARE SUBJECT TO UNCERTAINTY AND DO NOT SIGNIFY CURRENT OR FUTURE PROPERTY PERFORMANCE.