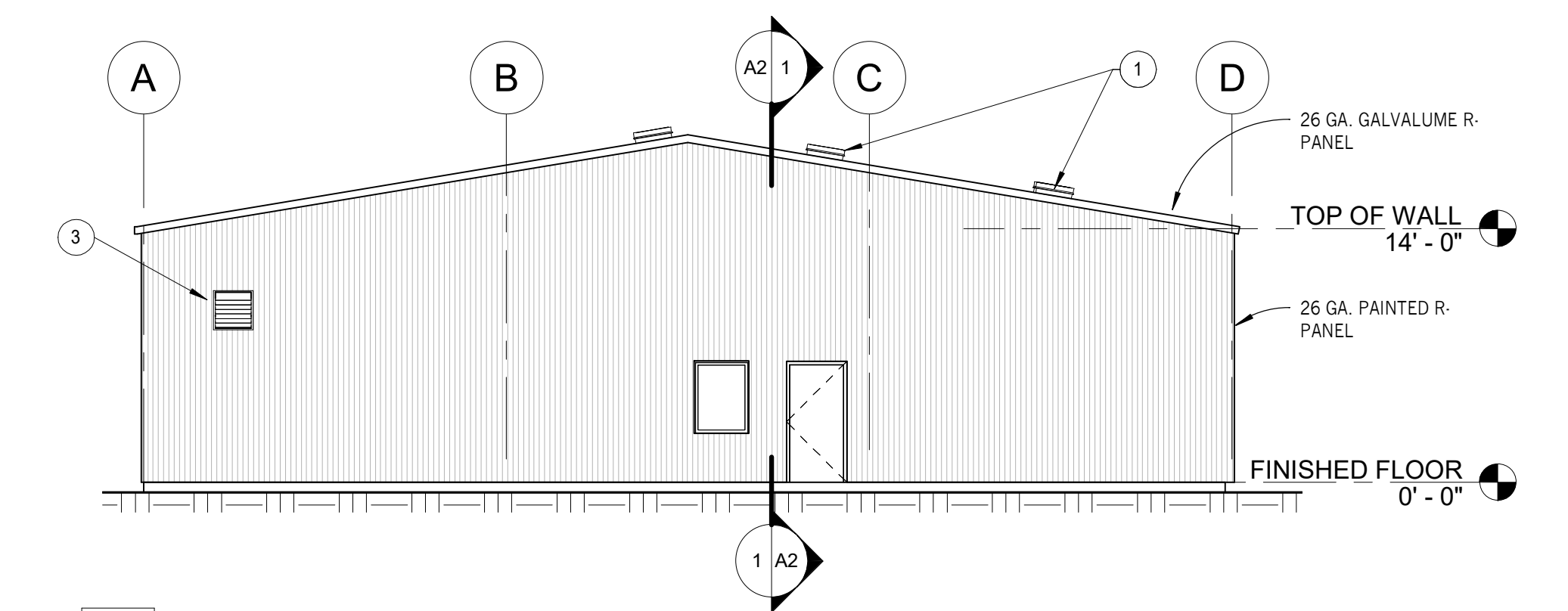
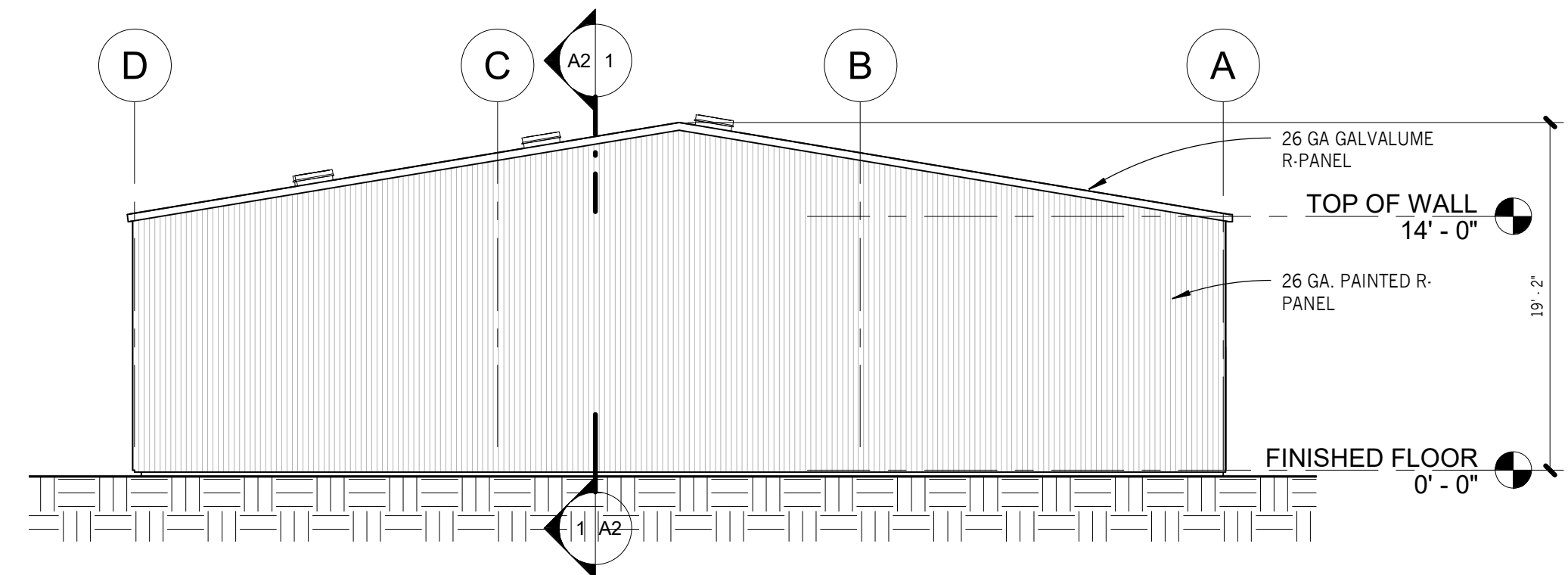


THIS DRAWING IS THE PROPERTY OF FULTON ARCHITECTS AND THE PROPERTY OF FULTON ARCHITECTS SHALL NOT BE REPRODUCED OR TRANSMITTED IN ANY FORM OR BY ANY MEANS, ELECTRONIC OR MECHANICAL, INCLUDING PHOTOCOPYING, RECORDING, OR BY ANY INFORMATION STORAGE AND RETRIEVAL SYSTEM, WITHOUT THE WRITTEN PERMISSION OF FULTON ARCHITECTS.

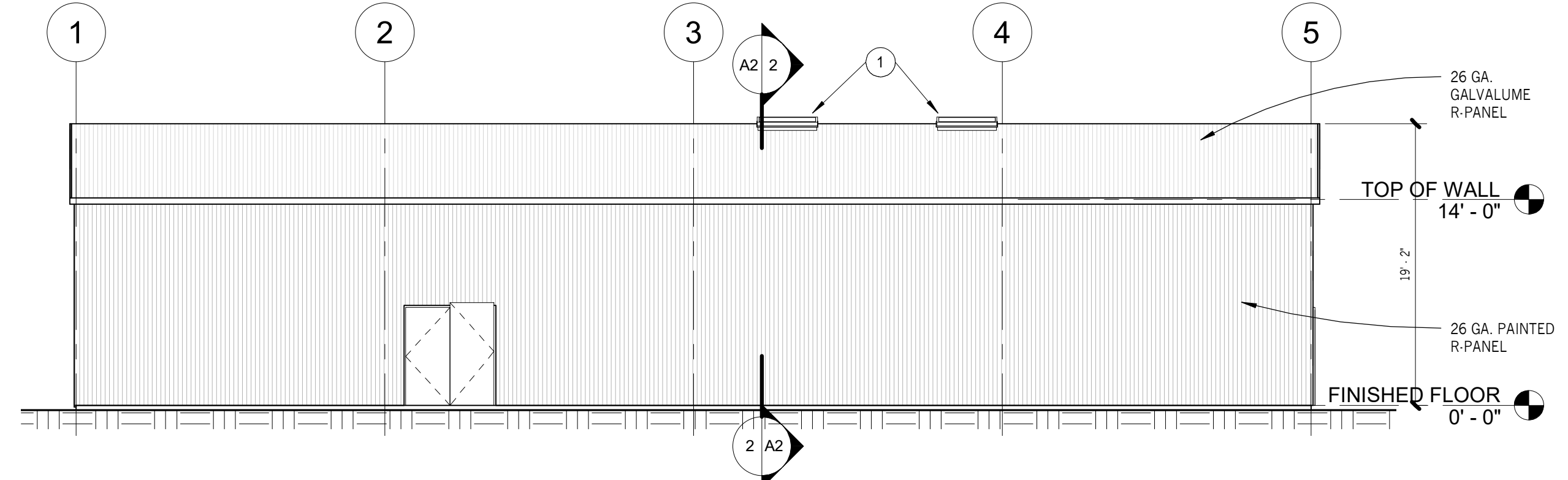
Revisions		
Num.	Date	Revision



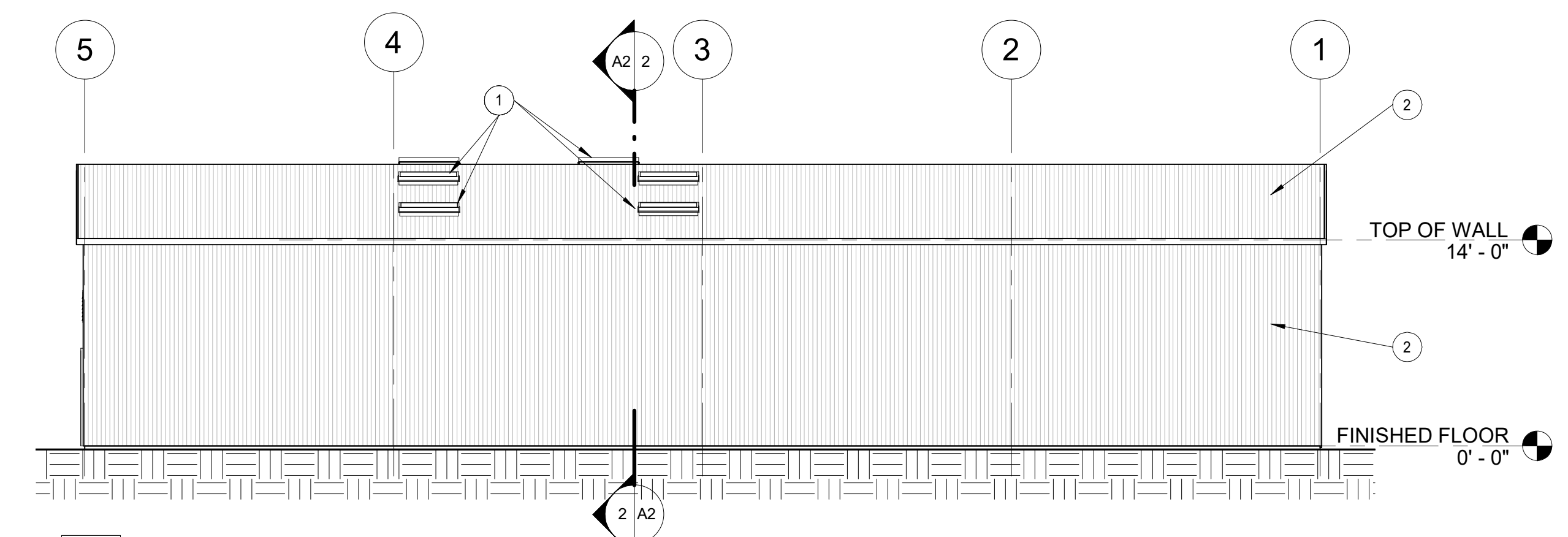
3 LEFT SIDE
A1 1/8" = 1'-0"



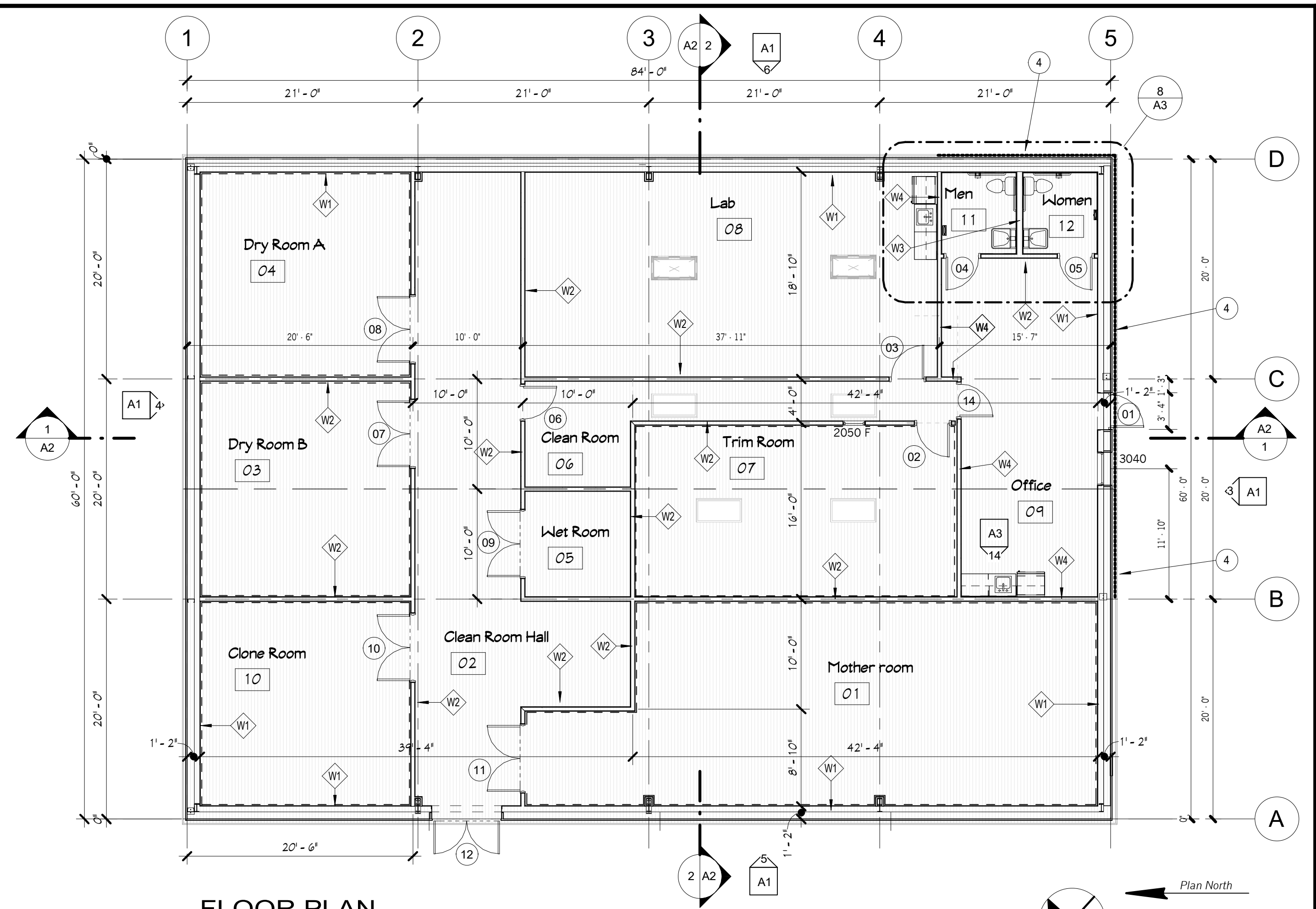
4 RIGHT SIDE
A1 1/8" = 1'-0"



5 REAR
A1 1/8" = 1'-0"



6 FRONT
A1 1/8" = 1'-0"



FLOOR PLAN
1/8" = 1'-0"

KEYNOTES	
MARK	ITEM
1	Unit Skylights
2	Metal siding.
3	24"X24" wall vent.
4	R10 (MIN) Rigid insulation to 24" depth - with cap flashing (exterior office walls only)

Room Schedule.											
Number	Name	Area	North	South	East	West	Floor	Base	Ceiling	Clg. Height	Comments
O1	Mother room	866 SF	F1	F1	F1	F1	F3	B1	F2	12' - 0"	
O2	Clean Room Hall	647 SF	F1	F1	F1	F1	F3	B1	None		
O3	Dry Room B	375 SF	F1	F1	F1	F1	F3	B1	F2	12' - 0"	
O4	Dry Room A	355 SF	F1	F1	F1	F1	F3	B1	F2	12' - 0"	
O5	Wet Room	92 SF	F1	F1	F1	F1	F3	B1	None		
O6	Clean Room	93 SF	F1	F1	F1	F1	F3	B1	None		
O7	Trim Room	457 SF	F1	F1	F1	F1	F3	B1	None		
O8	Lab	645 SF	F1	F1	F1	F1	F3	B1	None		
O9	Office	400 SF	F2	F2	F2	F2	F3	B1	None		
O10	Clone Room	355 SF	F1	F1	F1	F1	F3	B1	F2	12' - 0"	
O11	Men	50 SF	F4	F4	F4	F4	F3	B1	F2	8' - 0"	
O12	Women	50 SF	F4	F4	F4	F4	F3	B1	F2	8' - 0"	

- FINISH LEGEND**
- F1 1/2" Th. Trusscore panel over metal studs (@ 16" O.C.)
 - F2 1/2" M. R. Gyp. Bd. With Tape, Texture, And Semi-Gloss Paint
 - F3 Epoxy Floor Finish
 - F4 4' High .09 FRP Panel "WHITE" over 1/2" M.R. Gyp. Bd. W/ Tape, Texture, & Paint
- B1 Vinyl Coved Base With 3/8" Radius Min.**

WALL LEGEND	
W1	<p>EXTERIOR METAL PANELS 8" GIRT SPACE 6" STL STUDS @ 16" O.C. 6" FIBERGLASS BATT INSULATION 5/8" TH. M.R. GYP. BD. WITH TAPE, TEXTURE, & PAINT (BOTH SIDES)</p>
W2	<p>3-5/8" 20 GA. METAL STUDS @ 16" O.C. 4" TH. FIBERGLASS BATT INSULATION 5/8" M.R. GYP. BD. WITH TAPE, TEXTURE, AND PAINT (BOTH SIDES)</p>
W3	<p>6" 20 GA. METAL STUDS @ 16" O.C. W/ 6" TH. FIBERGLASS BATT INSULATION 6" TH. FIBERGLASS BATT INSULATION 5/8" M.R. GYP. BD. WITH TAPE, TEXTURE, AND PAINT (BOTH SIDES)</p>
<p>U.L. DESIGN No. U419 1 Hr.</p> <p>2. Steel Studs - Channel shaped, fabricated from 20 MSG corrosion-protected steel, min depth as indicated under item 5, spaced 16" OC (max of 24 in. OC). Studs to be cut 3/8 to 3/4 in. less than assembly height.</p> <p>4. Gypsum Board - 5/8" Gypsum panels with beveled, square or tapered edges, applied vertically or horizontally. Vertical joints centered over studs and staggered one stud cavity on opposite sides of studs. Vertical joints in adjacent layers (multilayer systems) staggered one stud cavity. Horizontal joints need not be backed by steel framing. Horizontal edge joints and horizontal butt joints on opposite sides of studs need not be staggered.</p> <p>6. Fasteners - Single layer systems: 1 in. long for 1/2 and 5/8 in. thick panels or 1-1/4 in. long for 3/4 in. thick panels, spaced 8 in. OC when panels are applied horizontally, or 8 in. OC along vertical and bottom edges and 12 in. OC in the field when panels are applied vertically.</p> <p>4. Batts and Blankets - Optional</p>	

Sheet Issue Date: 09/28/2020
Project Number: 2020-016
Camp Verde, AZ
GH Management
FLOOR PLAN & ELEVATIONS
DD

Sheet Number: A1
Of: