

# ANTHEM CORPORATE

3715 W ANTHEM WAY, ANTHEM, AZ

OFFICE & MEDICAL SPACE AVAILABLE

**NEWMARK**

PLEASE CONTACT YOUR EXCLUSIVE ADVISOR FOR MORE INFORMATION

KATHLEEN MORGAN ♦ Managing Director ♦ 602-809-1048 ♦ [kathleen.morgan@nrmk.com](mailto:kathleen.morgan@nrmk.com)



# ANTHEM CORPORATE

3715 W ANTHEM WAY, ANTHEM, AZ

## PROPERTY DETAILS



**\$30.00 FULL  
SERVICE WITH BASE  
YEAR OPERATING  
EXPENSES**



**2008  
YEAR BUILT**



**4.40:1,000/SF  
PARKING RATIO**



**3% ANNUAL  
INCREASES**



**TI'S  
AVAILABLE**

**2ND FLOOR ±30,361 RSF DIVISIBLE TO 1,200 RSF | 1ST FLOOR SUITE 119 ±1,592 RSF**

# ANTHEM CORPORATE

3715 W ANTHEM WAY, ANTHEM, AZ

## AVAILABILITY

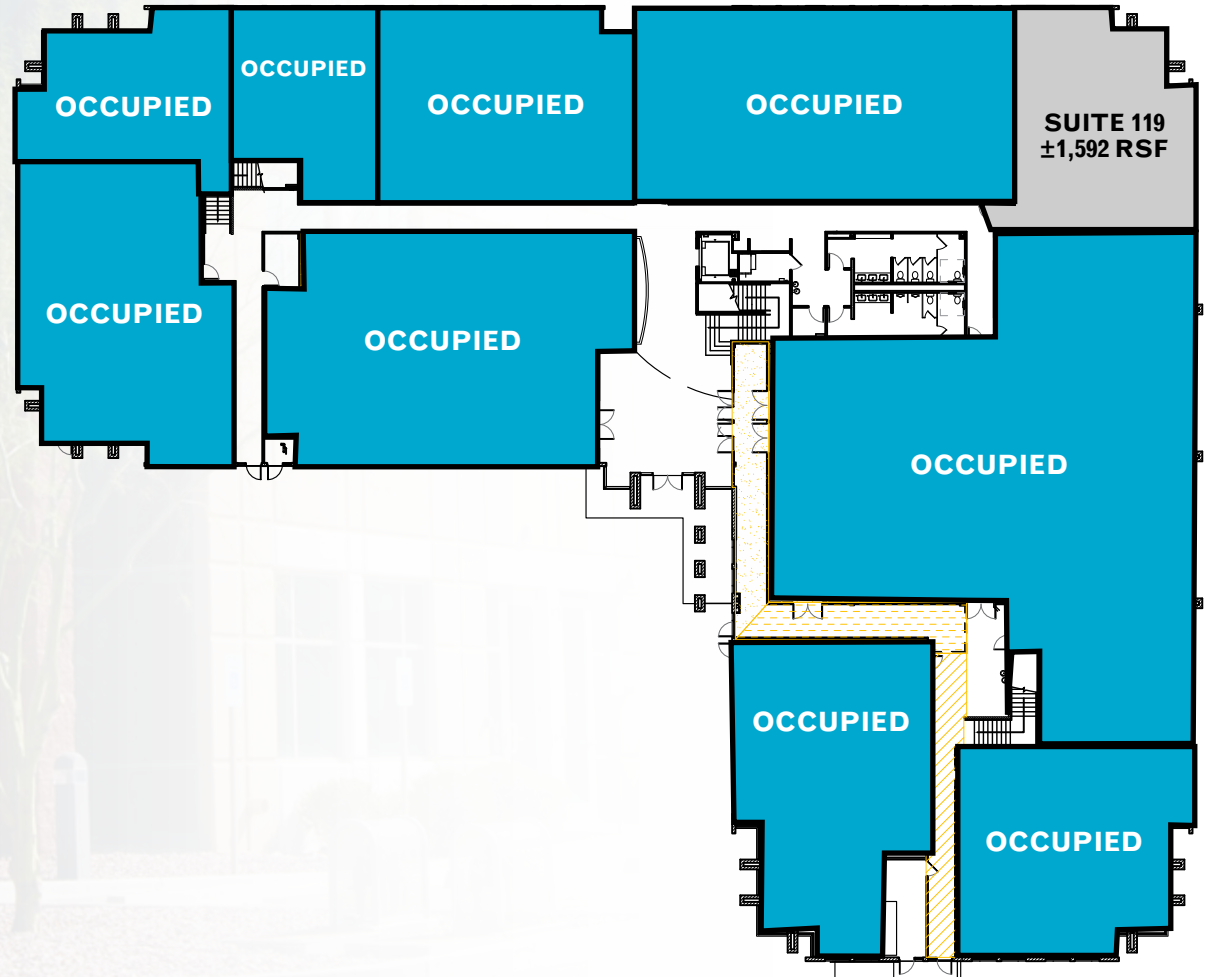
1ST FLOOR FLOOR PLAN



SUITE 119: ±1,592 RSF



\$30.00  
FULL SERVICE  
WITH BASE YEAR  
OPERATING  
EXPENSES



**NEWMARK**

PLEASE CONTACT YOUR EXCLUSIVE ADVISOR FOR MORE INFORMATION

KATHLEEN MORGAN ♦ Managing Director ♦ t 602-809-1048 ♦ [kathleen.morgan@nrmk.com](mailto:kathleen.morgan@nrmk.com)



# ANTHEM CORPORATE

3715 W ANTHEM WAY, ANTHEM, AZ

## AVAILABILITY

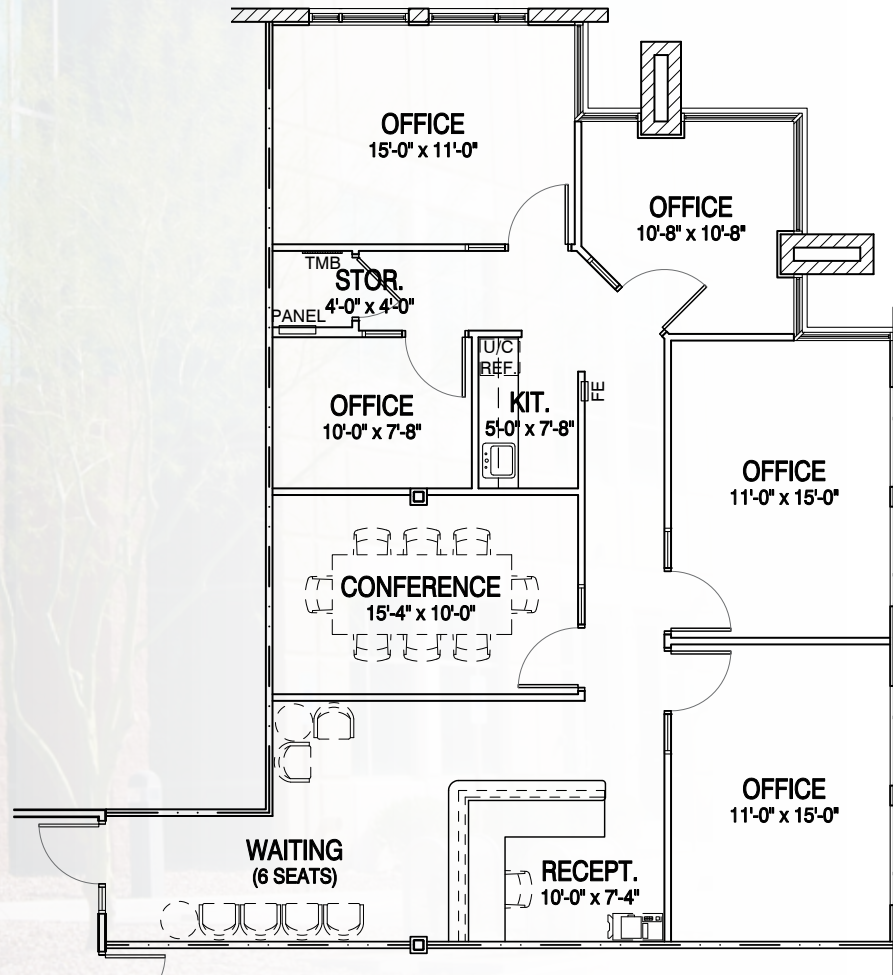
1ST FLOOR FLOOR PLAN



SUITE 119: ±1,592 RSF



\$30.00  
FULL SERVICE  
WITH BASE YEAR  
OPERATING  
EXPENSES



**NEWMARK**

PLEASE CONTACT YOUR EXCLUSIVE ADVISOR FOR MORE INFORMATION

KATHLEEN MORGAN ♦ Managing Director ♦ t 602-809-1048 ♦ [kathleen.morgan@nrmk.com](mailto:kathleen.morgan@nrmk.com)

# ANTHEM CORPORATE

3715 W ANTHEM WAY, ANTHEM, AZ

## AVAILABILITY

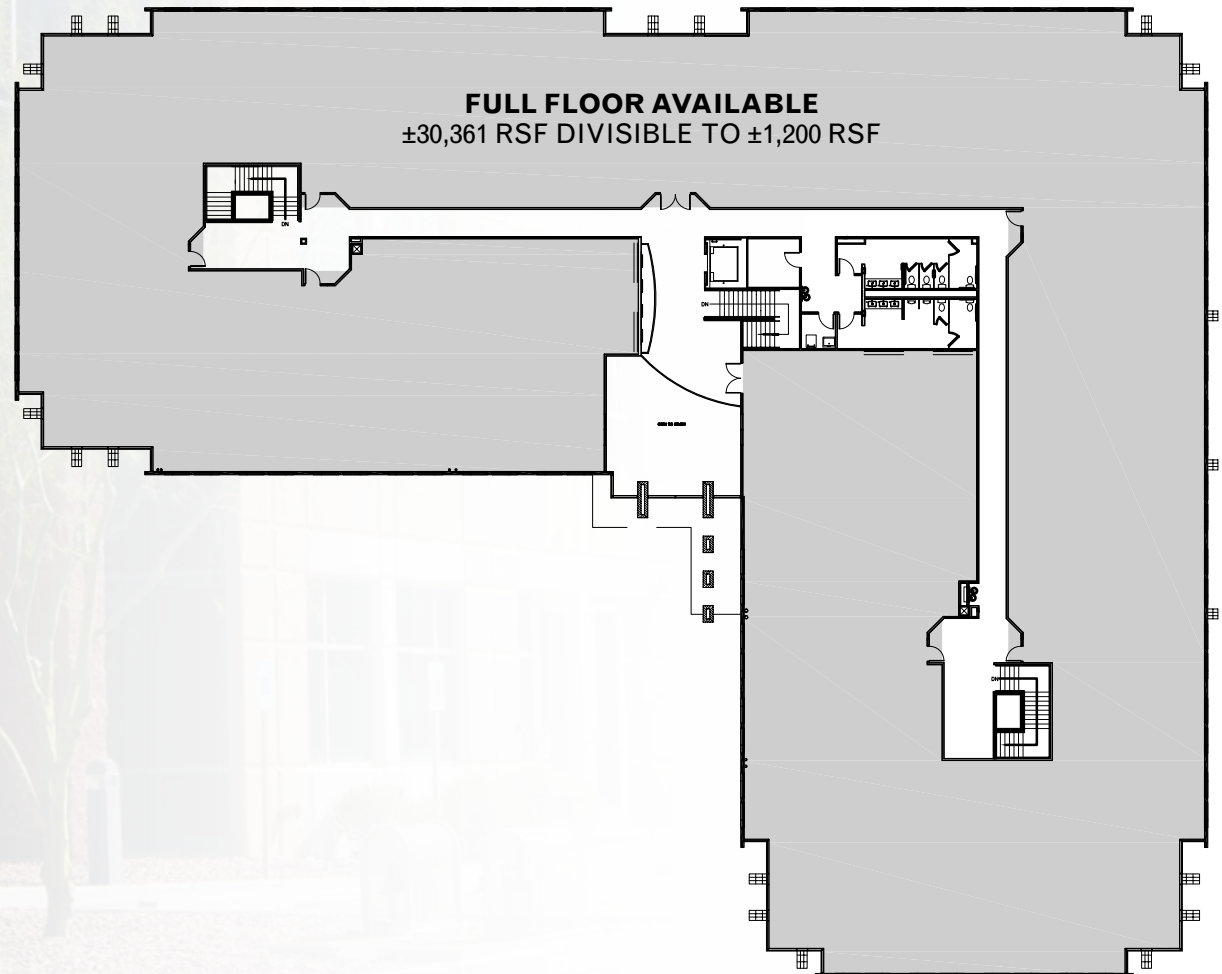
2ND FLOOR FLOOR PLATE  
FULL FLOOR USER



±30,361 RSF DIVISIBLE  
TO ±1,200 RSF



\$30.00  
FULL SERVICE  
WITH BASE YEAR  
OPERATING  
EXPENSES



**NEWMARK**

PLEASE CONTACT YOUR EXCLUSIVE ADVISOR FOR MORE INFORMATION

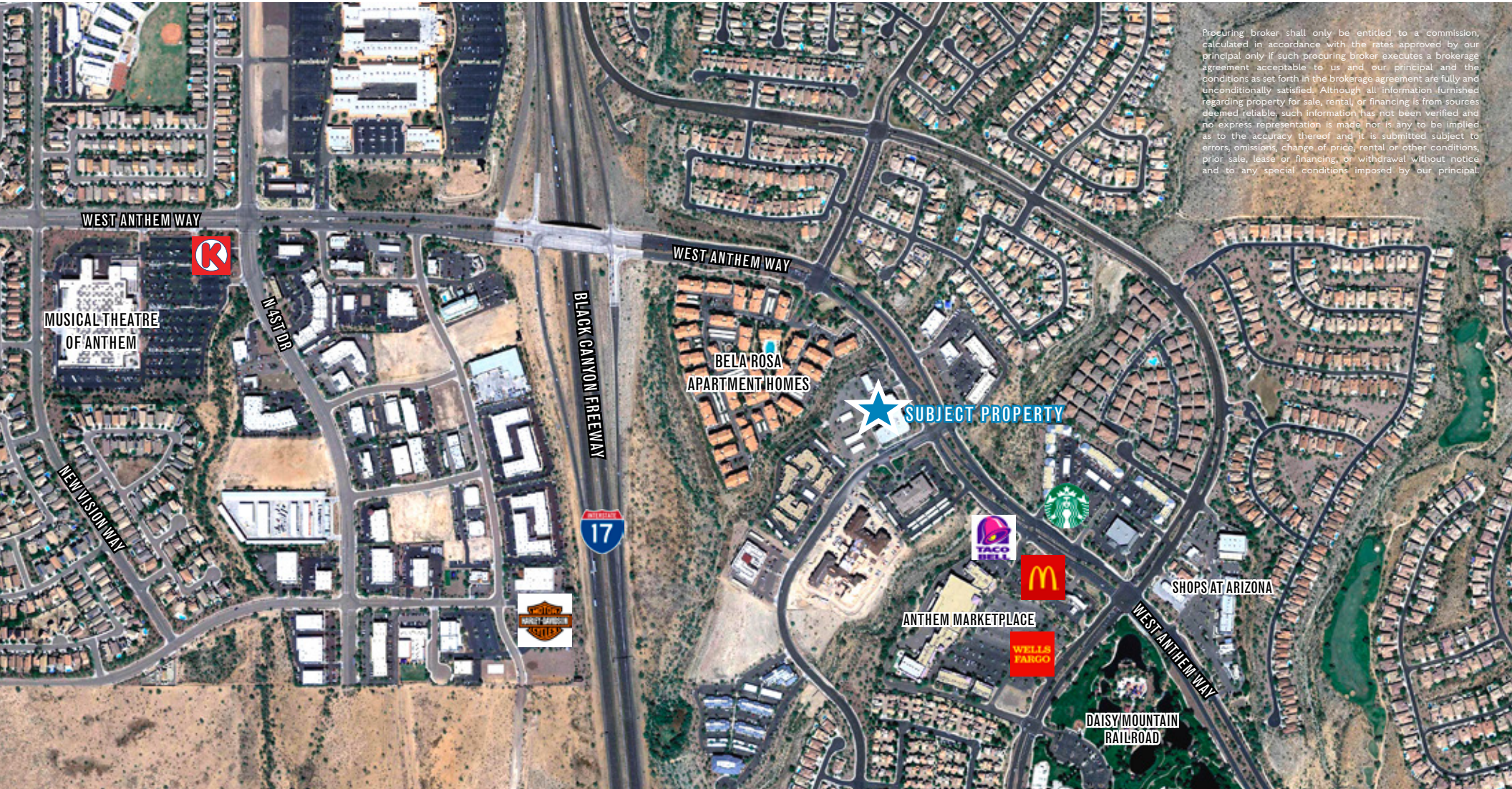
KATHLEEN MORGAN ♦ Managing Director ♦ t 602-809-1048 ♦ [kathleen.morgan@nmrk.com](mailto:kathleen.morgan@nmrk.com)



# LOCATION

# ANTHEM CORPORATE

3715 W ANTHEM WAY, ANTHEM, AZ



Procuring broker shall only be entitled to a commission, calculated in accordance with the rates approved by our principal only if such procuring broker executes a brokerage agreement acceptable to us and our principal and the conditions as set forth in the brokerage agreement are fully and unconditionally satisfied. Although all information furnished regarding property for sale, rental, or financing is from sources deemed reliable, such information has not been verified and no express representation is made nor is any to be implied as to the accuracy thereof and it is submitted subject to errors, omissions, change of price, rental or other conditions, prior sale, lease or financing, or withdrawal without notice and to any special conditions imposed by our principal.

**NEWMARK**

PLEASE CONTACT YOUR EXCLUSIVE ADVISOR FOR MORE INFORMATION

KATHLEEN MORGAN ♦ Managing Director ♦ t 602-809-1048 ♦ [kathleen.morgan@nrmk.com](mailto:kathleen.morgan@nrmk.com)