

25715-25737 MEADOWBROOK RD.
NOVI, MICHIGAN

INDUSTRIAL FOR SALE
17,193 square Feet Available



**SIGNATURE
ASSOCIATES**
KNOW SIGNATURE | KNOW RESULTS



PROPERTY FEATURES

- Rare stand-alone smaller building for sale
- 17,193 square feet available
- 2,160 square feet of office space with new HVAC
- 18' clear height
- (3) 12x14, 10x12 grade level doors
- 57 parking spaces, partially resurfaced
- Partial new roof; new LED shop lighting
- Zoned light industrial
- Located on 1.39 acres
- Meadowbrook Road frontage with easy access to I-96 and M-5
- 2000 amps, 240 volts power



For more information, please contact:

JIM MONTGOMERY
(248) 359 0614

jmontgomery@signatureassociates.com

CHRIS SECONTINE
(248) 799 3174

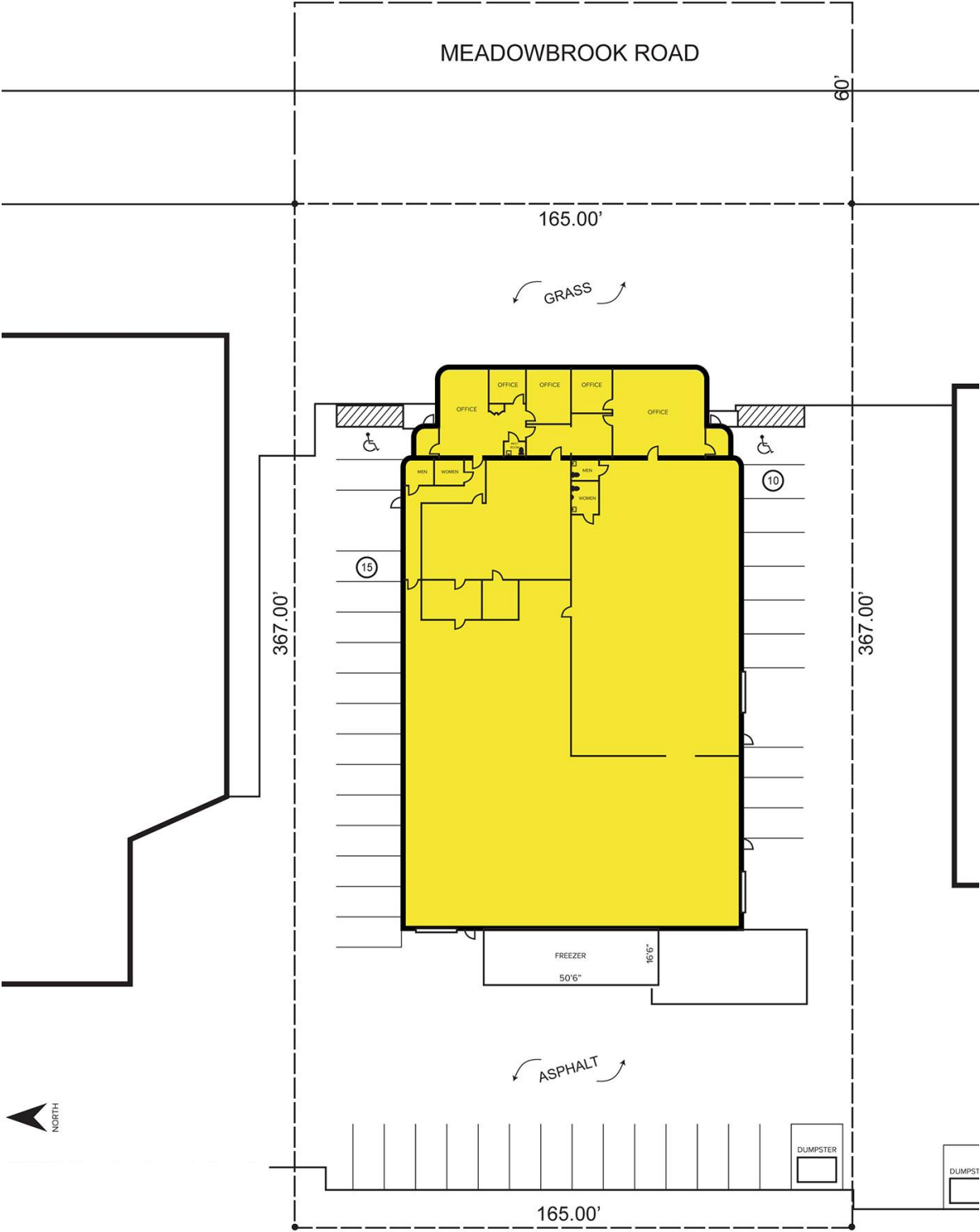
csecontine@signatureassociates.com

SIGNATURE ASSOCIATES
One Towne Square, Suite 1200
Southfield, MI 48076
www.signatureassociates.com

25715-25737 Meadowbrook Road – Novi, Michigan
Industrial For Sale

17,193
Square Feet
AVAILABLE

Site Plan



For more information, please contact:

JIM MONTGOMERY

(248) 359 0614

jmontgomery@signatureassociates.com

CHRIS SECONTINE

(248) 799 3174

csecontine@signatureassociates.com

SIGNATURE ASSOCIATES

One Towne Square, Suite 1200

Southfield, MI 48076

www.signatureassociates.com

17,193
Square Feet
AVAILABLE

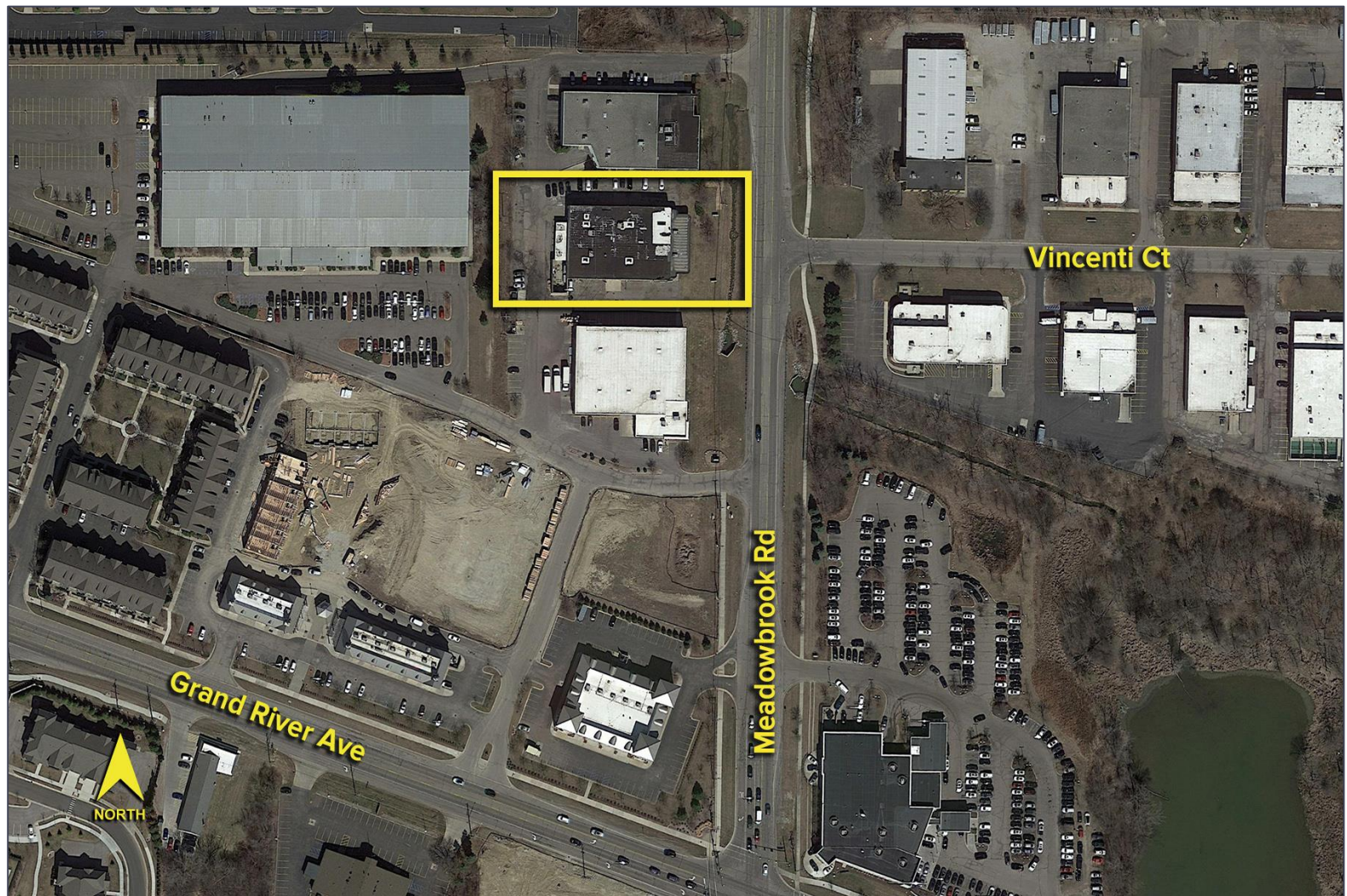


25715-25737 Meadowbrook Road – Novi, Michigan

Industrial For Sale

17,193
Square Feet
AVAILABLE

Aerial



For more information, please contact:

JIM MONTGOMERY

(248) 359 0614

jmontgomery@signatureassociates.com

CHRIS SECONTINE

(248) 799 3174

csecontine@signatureassociates.com

SIGNATURE ASSOCIATES

One Towne Square, Suite 1200

Southfield, MI 48076

www.signatureassociates.com

Information is subject to verification and no liability for errors or omissions is assumed. Price is subject to change and listing withdrawal.