

**LOOP
CENTRAL**

**WHERE
EVERYTHING
COMES
TOGETHER.**



INNOVATIVE & CONNECTED CAMPUS EXPERIENCE

**LOOP
CENTRAL**

3 BUILDINGS

UNPARALLELED ACCESS

REAL TENANT VALUE

Located conveniently close to the
Galleria, West Loop, Bellaire and
Greenway submarkets

Amenities located on and off campus

LC1
4888
LOOP CENTRAL DR

LC2
4848
LOOP CENTRAL DR

LC3
4828
LOOP CENTRAL DR

EXPERIENCE LOOP CENTRAL



Great access & visibility – conveniently located close to the Galleria, West Loop, Bellaire, and Greenway submarkets



Signage opportunities available



On-site property management/engineering staff



3.5 per 1,000 parking ratio available



Proven efficient floor plates



Existing above-standard infrastructure in place



On-site security 24 hours a day, 7 days a week



Curated tenant experiences such as monthly newsletter, discount tickets for local events, movies, sports, entertainment



On-site car wash service available



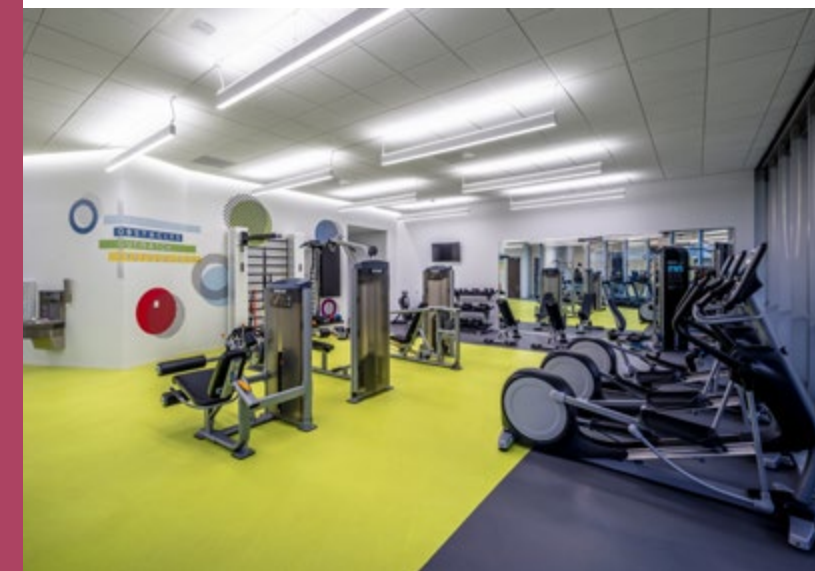
Pre-function area with kitchenette, multiple meeting layouts and technology available



Amenity space for tenants to enjoy with WIFI access, sparkling water dispenser, foosball table and vending options



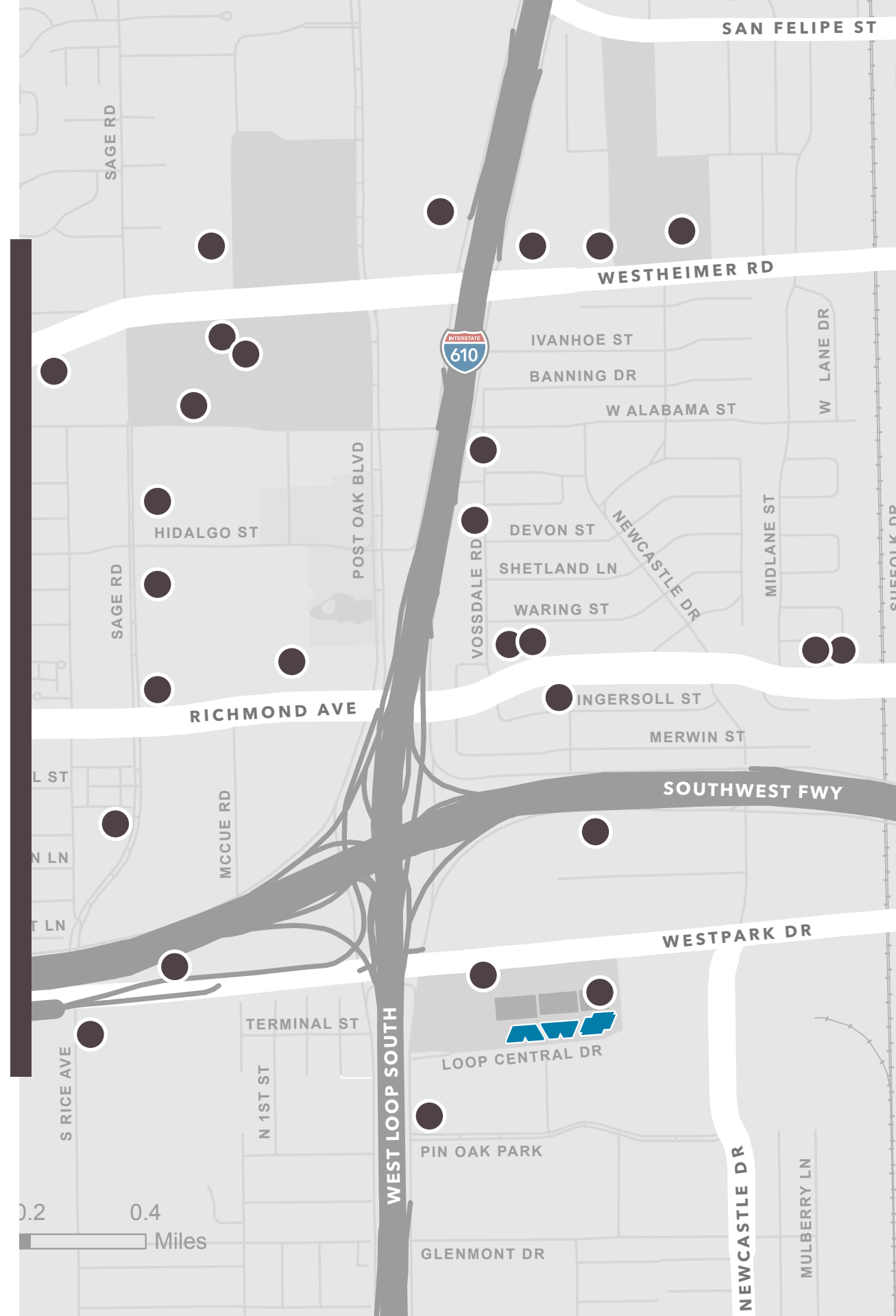
Free weights, cardio equipment and resistance training with private locker rooms



CENTRAL

adjective | cen•tral | \ ˈsen-trəl \

OF THE GREATEST IMPORTANCE;
PRINCIPAL OR ESSENTIAL.



CENTRALIZED CONVENIENCE

5
MINUTES
DRIVE TO

Galleria Area
Highland Village
Upper Kirby
And More



RESTAURANTS



HOTELS

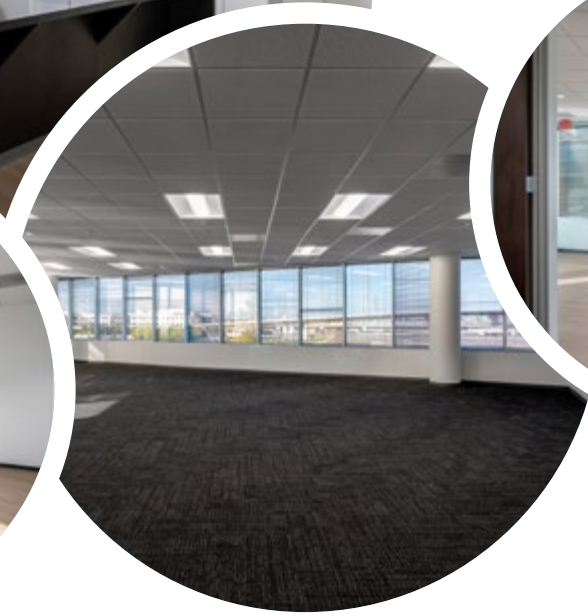


GYMS





SUITE 400
4,514 SF



LC1
4888
LOOP CENTRAL DR

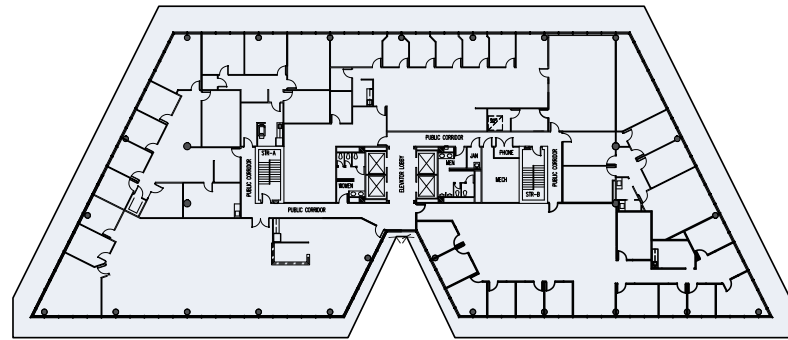


MOVE-IN READY
SPEC SUITE

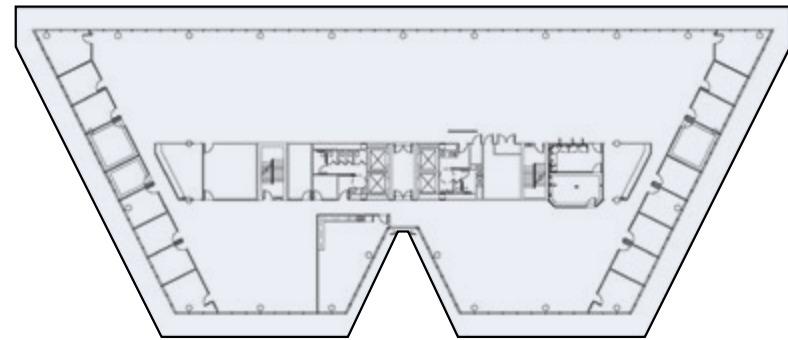
WORK SMARTER, NOT HARDER

TYPICAL FLOORPLATES

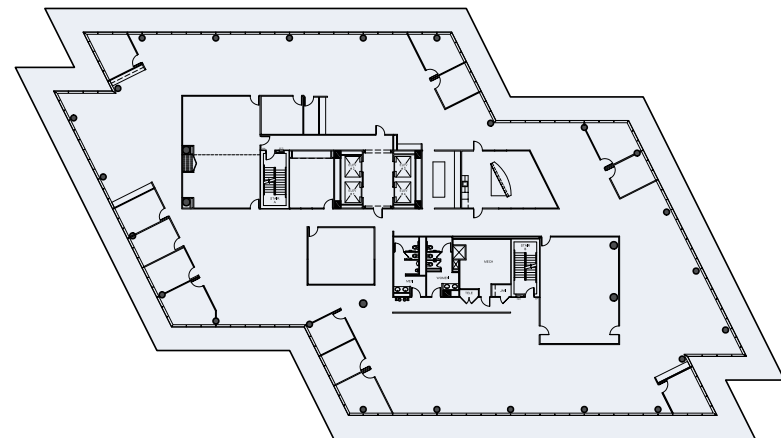
LC1
4888
LOOP CENTRAL DR



LC2
4848
LOOP CENTRAL DR



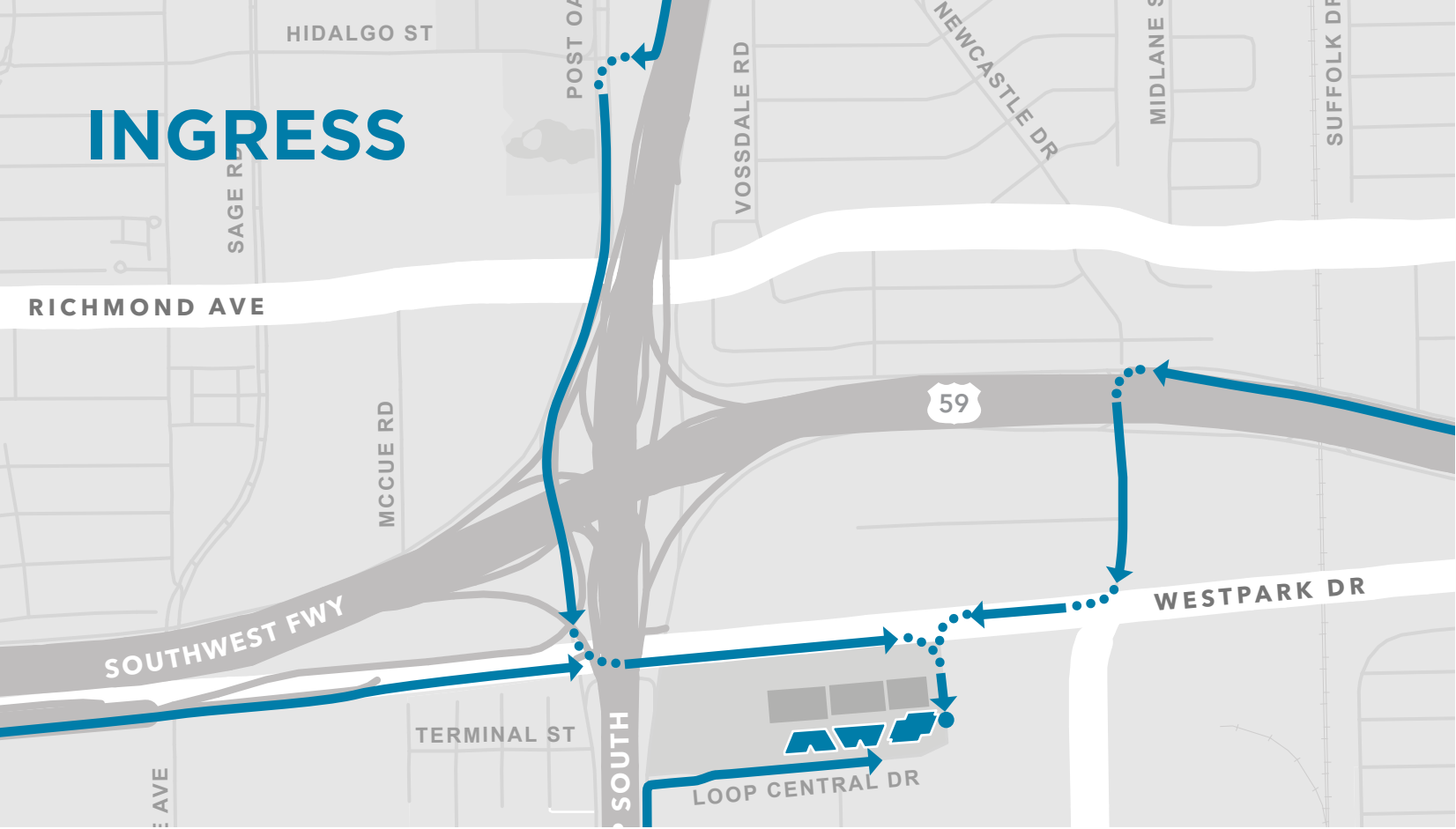
LC3
4828
LOOP CENTRAL DR



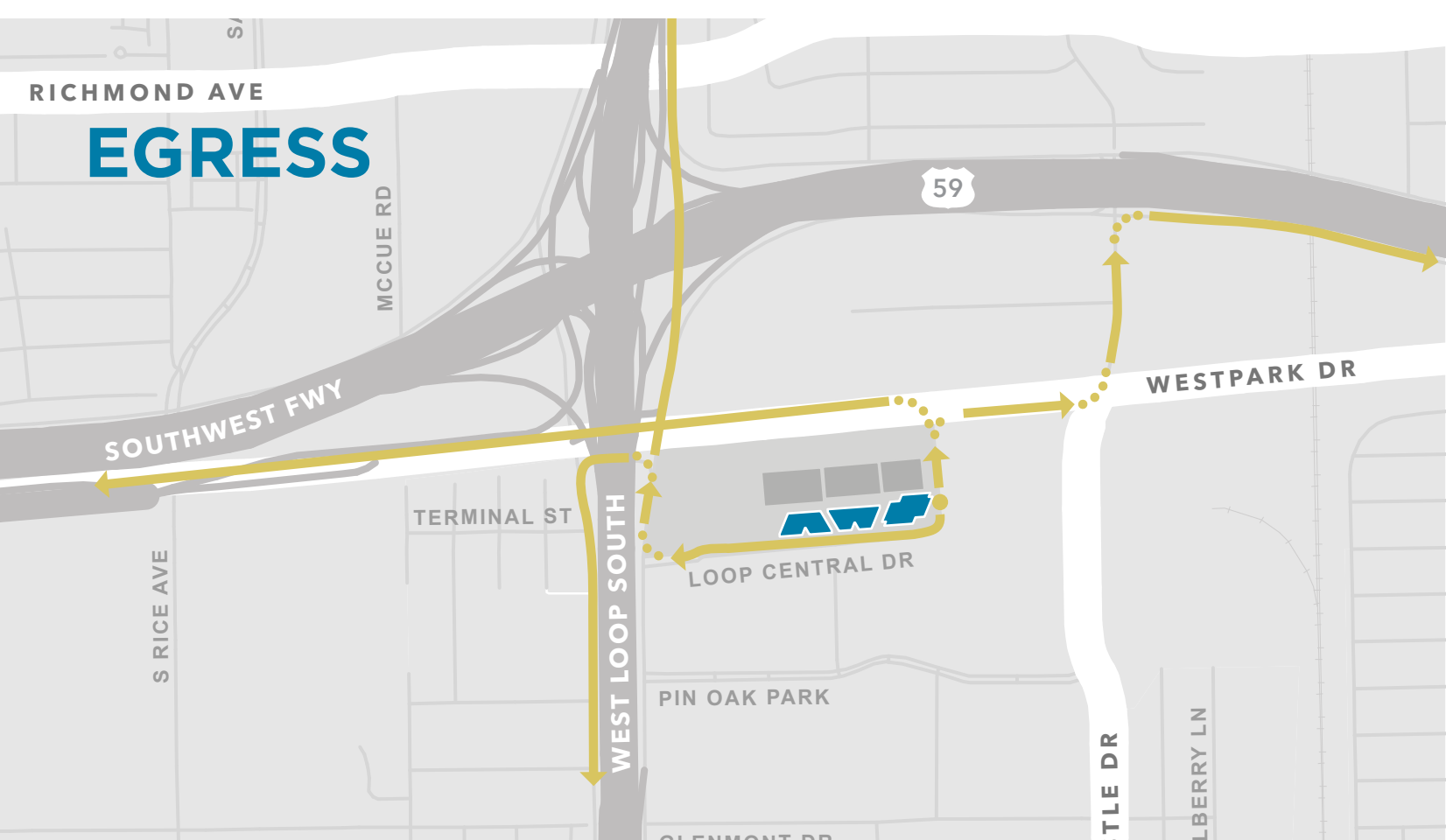
EFFICIENT
FLOOR PLATES

WORK SMARTER, NOT HARDER

INGRESS



EGRESS



MAKING
ACCESSIBILITY
A LIFESTYLE





NEXT LEVEL ADDITIONS

COMPLETED IN 2020

NEW TENANT LOUNGE

INDOOR AND OUTDOOR GAME SPACE

CONFERENCE CENTER

OUTDOOR LOUNGE SPACE

FITNESS CENTER

DELI AND OUTDOOR DINING SPACE

STAY IN THE LOOP

CONTACT OUR LEASING TEAM TODAY

DAVID BAKER

P: 713.407.8700
David.Baker@transwestern.com

DOUG LITTLE

P: 713.272.1284
Doug.Little@transwestern.com

KELLI GAULT

P: 713.270.3349
Kelli.Gault@transwestern.com

