



922 Locust St

Toledo, Ohio 43604

Property Highlights

- 36,159 SF available
- Great access to I-280 and I-75
- Five dock doors, one overhead
- Built in 1913, renovated in 2024
- Zoned IL (Limited Industrial)
- 6,000 LB freight elevator

Property Overview

Meticulously maintained and recently renovated historic building has many upgrades including a new roof and paint. Operational freight elevator provides access to upper floors. Additional features include security cameras, parking, clean secure office. This is a move-in-ready investment.

Offering Summary

Sale Price:	\$549,000
Building Size:	36,159 SF

For More Information

Joshua D. Payzant

O: 419 960 4410 x323

jpaysant@naitoledo.com | OH #SAL.2016003142

Kati McDougale

O: 419 320 1619

kmcdougale@naitoledo.com | OH #SAL.2023007174

Sale Price	\$549,000
------------	-----------

Location Information

Street Address	922 Locust St
City, State, Zip	Toledo, OH 43604
Market	Toledo
Cross-Streets	Locust St & Champlain St

Building Information

Building Size	36,159 SF
Building Class	C
Number of Floors	4
Year Built	1913
Year Last Renovated	2024
Gross Leasable Area	36,159 SF

Property Information

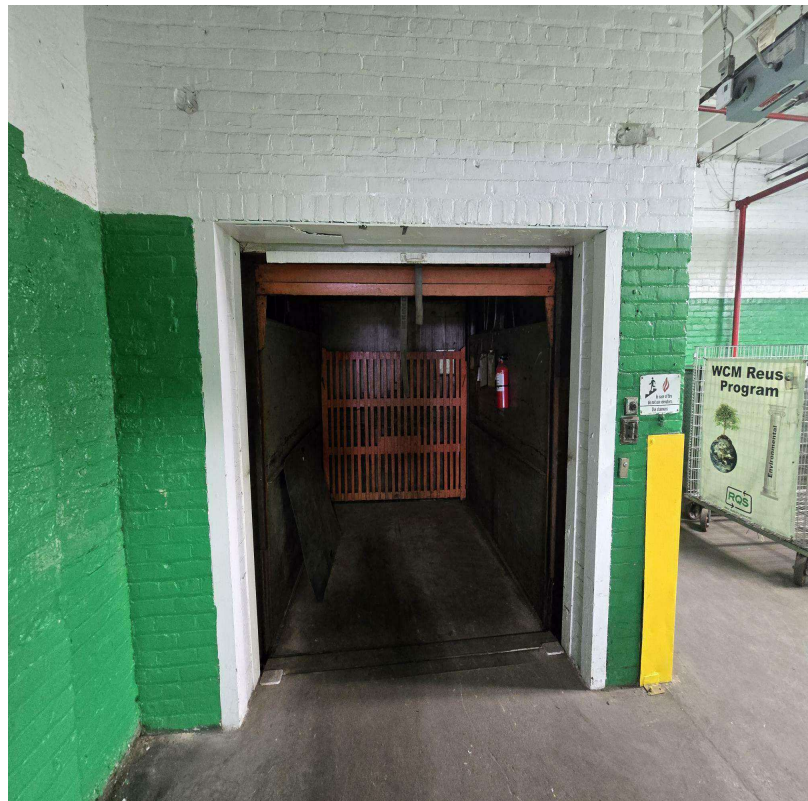
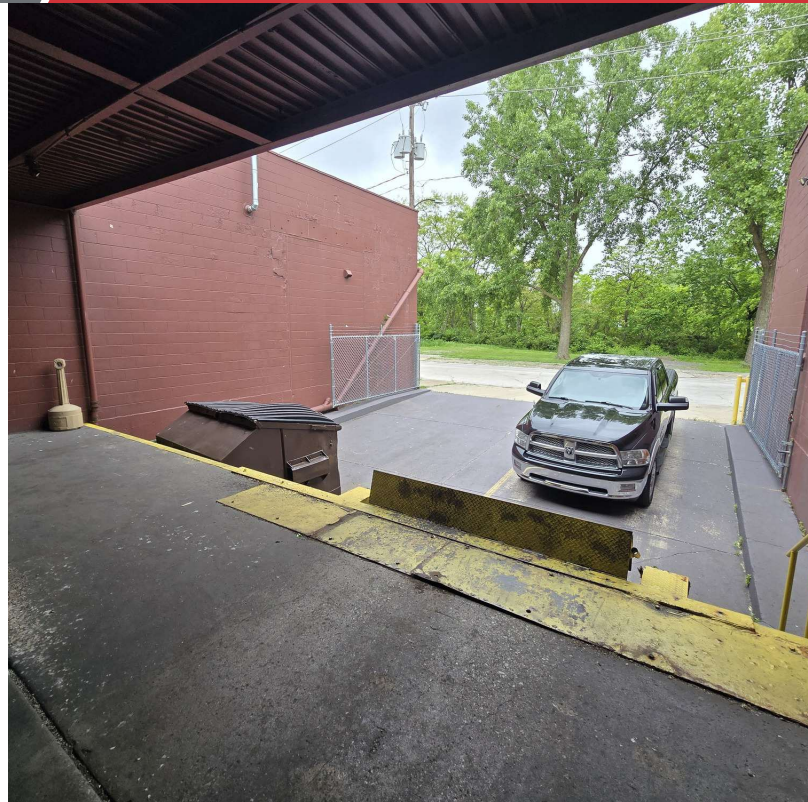
Property Type	Warehouse
Property Subtype	Office Flex Building
Zoning	Limited Industrial
Lot Size	26,663 SF
APN #	1548434 & 1548441
Corner Property	Warehouse
Power	600 AMP 230v 3 Phase

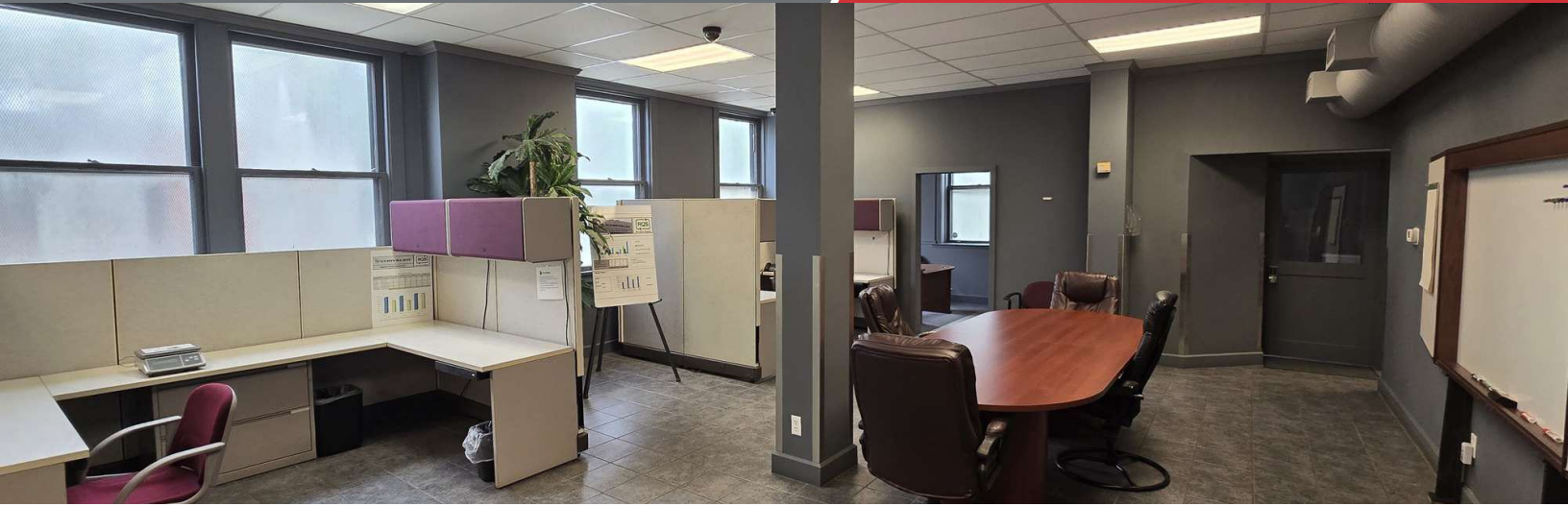
Utilities & Amenities

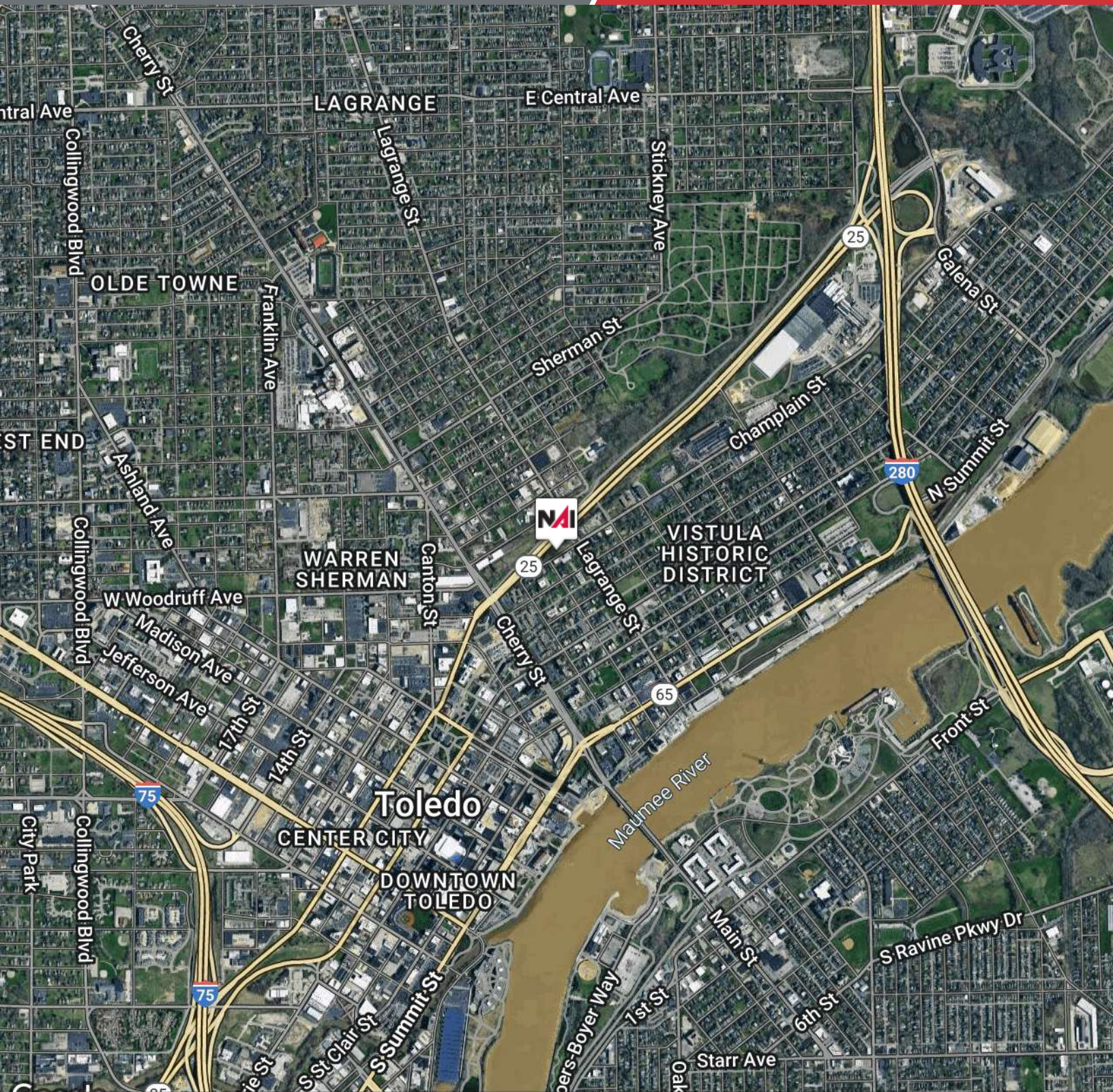
Freight Elevator	Yes, 6,000 lb
Central HVAC	Yes
Gas / Propane	Yes











Map data ©2025 Google Imagery ©2025 Airbus, CNES / Airbus, Landsat / Copernicus, Maxar Technologies, USDA/FPAC/GEO

NO WARRANTY OR REPRESENTATION, EXPRESS OR IMPLIED, IS MADE AS TO THE ACCURACY OF THE INFORMATION CONTAINED HEREIN, AND THE SAME IS SUBMITTED SUBJECT TO ERRORS, OMISSIONS, CHANGE OF PRICE, RENTAL OR OTHER CONDITIONS, PRIOR SALE, LEASE OR FINANCING, OR WITHDRAWAL WITHOUT NOTICE, AND OF ANY SPECIAL LISTING CONDITIONS IMPOSED BY OUR PRINCIPALS NO WARRANTIES OR REPRESENTATIONS ARE MADE AS TO THE CONDITION OF THE PROPERTY OF ANY HAZARDS CONTAINED THEREIN ARE TO BE IMPLIED.

4427 Talmadge Rd, Suite A
Toledo, OH 43623
419 960 4410 tel
naiharmon.com