

kiln.
Holladay

Experience a World Within Your Workplace.

Kiln offers an unparalleled experience that elevates the performance and lifestyle of our members through an ecosystem of people, products, places, and spaces.



An All-Inclusive Experience

With turnkey move-in, month-to-month billing, exclusive member benefits, curated amenities and programming, 24/7 access, and a network of locations across the western United States, Kiln's all-inclusive experience allows you to focus on growing your business.



A workspace designed with you in mind

- 1 Natural Light
- 2 Sit-to-Stand Desks
- 3 Ergonomic Chairs
- 4 White Noise Machines
- 5 Extra Storage
- 6 Hardwood Floors
- 7 Exposed Ceilings

Move-In Ready Large Offices

Kiln's private offices are fully customizable and diverse in size to accommodate teams of 1 to 100. Personalize your space with branding, furniture, tech, and more.

Maximize Cost Savings

Our all-inclusive solutions prioritize flexibility and minimize risk with no long-term lease agreements or overhead expenses. Our frictionless experience frees up administrative time so you can focus on strategic initiatives.

Attract and Retain Talent

Hire better talent for less. Employees and prospective employees value the environment they work in now more than ever.

Gather Your Team

Kiln provides a vibrant, dynamic environment that boosts employee morale and productivity, making them eager to come together in the office for the collaborative and inspiring atmosphere.



Feel at Home while at Work

Handcrafted and designed to create moments of collision between members, our space fosters spontaneous interactions and the forging of new connections.

Programming & Events

Bolster your team's wellbeing and professional development with our wellness programming and exclusive learning and networking events.



Après Work



Lunch & Learn



Waffle Wednesday



Networking Events



Industry-Leader Panels



Wine Tasting



Master Classes



Yoga & Meditation Classes



➔ Theater

With a large theater-style screen, beautiful lighting, and high-tech AV equipment, our event space provides a dynamic and flexible environment to make an impression.

➔ Apartment

Equipped with an in-suite kitchenette, conference breakout rooms, and a living-room-style seating area, this space is designed to foster creativity for team gatherings, off-sites, brainstorming sessions, and more.

➔ Conference and Meeting Rooms

Handcrafted and beautifully designed with state-of-the-art audio and visual equipment, and optional catering services, our conference and meetings rooms provide a seamless and professional experience.

➔ Atrium

The atrium features advanced lighting, high-tech AV equipment, and rotunda-style seating amidst live plants, creating a space that combines beauty and functionality.



➔ **Golf Simulator**

Even just a short session on the golf simulator can help employees recharge and come back to their tasks with renewed energy and focus.

➔ **Walking Desks**

Get moving during work! Walking desks can help promote physical activity and reduce sedentary behavior.

➔ **Onsite Barbershop**

Our onsite barbershop makes it easy for members to fit a fresh cut into their day without missing a beat.

➔ **Fitness Studio**

Enjoy a semi-private, bookable fitness space with state-of-the-art gym equipment.



➔ **Massage Chair**

Improve circulation, reduce muscle tension, and provide relaxation, benefiting overall health and well-being.

➔ **Parenting Room**

A private, comfortable space for parents to take care of their babies' needs.

Optimize Your Enterprise Office Space



Cost Savings

Companies can save up to 25% on real estate costs compared to traditional office. (JLL)



Productivity

71% of coworkers reported an increase in creativity since joining a coworking space. (DeskMag)



Team Retention

89% of coworkers reported being happier since joining a coworking space. (GCUC)



Networking

82% of coworkers stated that coworking has expanded their professional networks. (Small Business Labs)

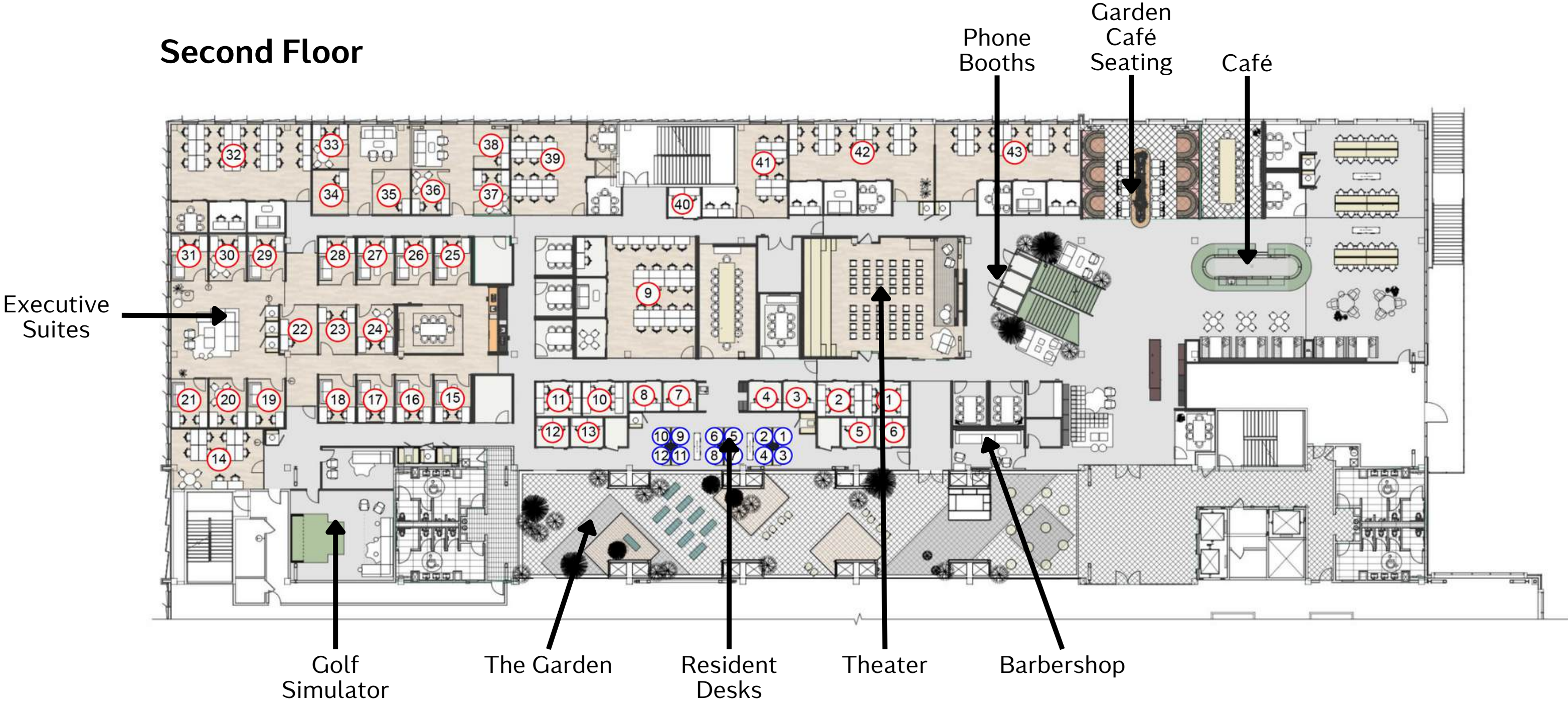


Flexibility

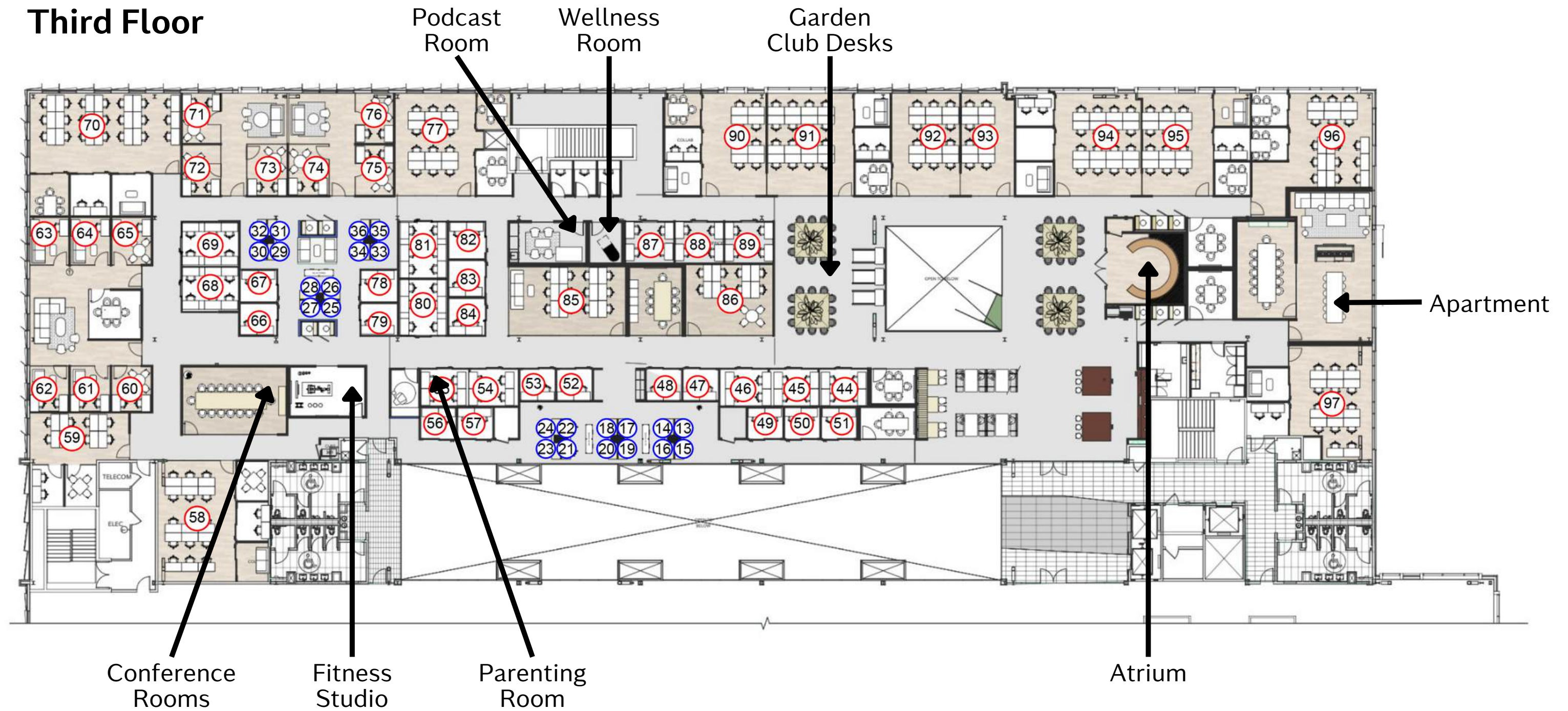
84% of coworkers reported being more motivated when working in a flex environment. (Emergent Research)



Second Floor



Third Floor





Explore our network.

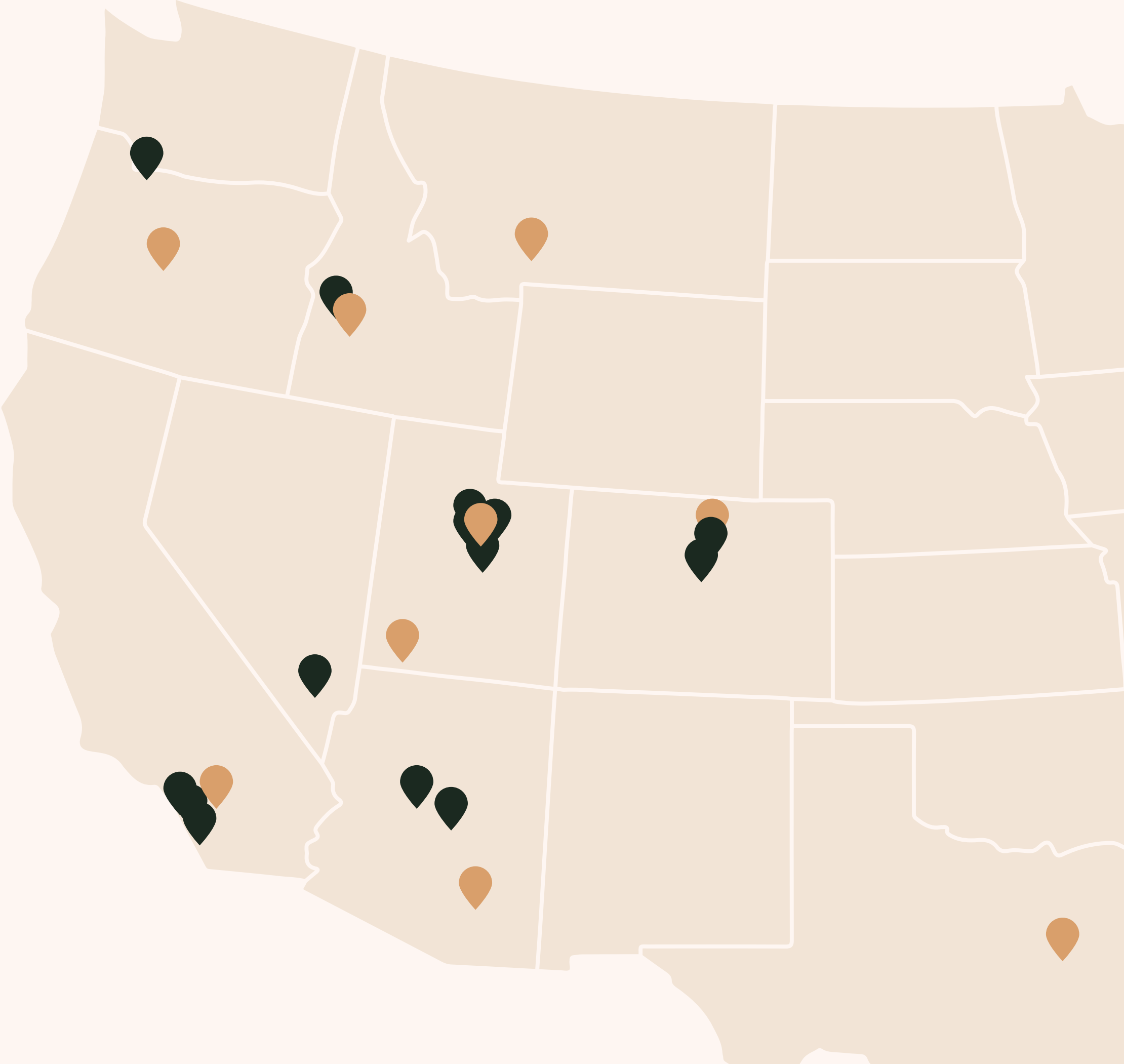
Once a member of one Kiln location, you have access to all Kiln locations. Today, we operate locations across the Mountain West with a focus on lifestyle-centric communities that are growth-minded and attractive to tech talent or entrepreneurs.

Active

- | | | |
|---------------------|---------------|--------------------|
| Gilbert, AZ | Boulder, CO | Lehi, UT |
| Biltmore, AZ | Littleton, CO | Park City, UT |
| Carlsbad, CA | Meridian, ID | Provo, UT |
| Leucadia, CA | Las Vegas, NV | Salt Lake City, UT |
| Rancho Bernardo, CA | Portland, OR | St. George, UT |
| Solana Beach, CA | | |

Under Development

- | | |
|-----------------|--------------------|
| Ft. Collins, CO | Bend, OR |
| Bozeman, MT | Preston Hollow, TX |
| Holladay, UT | Boise, ID |



Flexible Membership

Your work environment should be flexible to the changing needs of your business. Our all-inclusive membership options are designed to support in-office or hybrid work for startups, creatives, and enterprise teams of 1 to 100.



Club

Shared desk space for collaborative and agile professionals.

Month-to-Month Rate: \$295



Private Office

Private office for 1 to 15 people. Enclosed, lockable, and ready for move-in.

Month-to-Month Rate: Starting at \$1,500



Basecamp

Designed for remote-first teams who need an elevated environment to gather once or twice a week.

Inquire for Pricing



Resident Desk

Dedicated desk to set up shop. Perfect for an individual or growing team.

Month-to-Month Rate: \$495/desk



Private Suite

Open floor workspace and dedicated conference rooms for teams of 1 to 100

Month-to-Month Rate: Starting at \$4,600



Access Membership

Two flexible access days per month at any location, so you'll have total control over how you want to work.

Starting at \$49 per month





Contact: Jared Steere
Community Director



holladay@kiln.com

385.462.8993

4835 South Highland Drive
Holladay, Utah 84117



kiln.