

JAMESON.

FOR LEASE

OFFICE/MEDICAL

5015 North Paulina Street
Chicago, IL 60640

\$23.00 SF/yr

Mark Kishtow
Senior VP, Investment Sales
312.867.2265
mkishtow@jameson.com

Brent Burden, CCIM
Senior Vice President
847.826.7271
bburden@jameson.com

JAMESONCOMMERCIAL.COM

©Jameson Real Estate LLC. All information provided herein is from sources deemed reliable. No representation is made as to the accuracy thereof & it is submitted subject to errors, omissions, changes, prior sale or lease, or withdrawal without notice. Projections, opinions, assumptions & estimates are presented as examples only & may not represent actual performance. Consult tax & legal advisors to perform your own investigation.



JAMESON.



LEASE OVERVIEW

LEASE PRICE:	\$23.00 SF/yr
SUITE SIZES:	600- 1,850 SF
LEASE TYPE:	Gross
TENANCY:	Multi-Tenant-
SUBMARKET:	Ravenswood
MARKET:	Chicago
CROSS STREETS:	Paulina /Winnemac

AREA TENANTS

- Mariano's
- Jersey Mike's
- Bar Roma Italian Restaurant
- Ace Hardware
- Orange Theory Fitness
- The Bongo Room Lounge

PROPERTY DESCRIPTION

Thorek Memorial Hospital
Medical Office Suites FOR LEASE
Office Suites also available for Non-Medical uses.

PROPERTY HIGHLIGHTS

- Medical ready suites available: 575- 1,850 SF
- Existing medical office conditions
- Gross leases
- Utilities and wifi included in rent.
- Thorek Hospital Andersonville Pavillion
- Onsite surface parking

AREA AND TRANSPORTATION HIGHLIGHTS

- 2 blocks from Ravenswood METRA station,
- 5 blocks from DAMEN CTA Brown line station.
- 2 blocks from Lawrence Avenue CTA bus line.
- 2 blocks from Clark Street CTA bus line.

JAMESON.

INTERIOR PHOTOS

5015 North Paulina Street, Chicago, IL 60640

\$23.00 SF/yr

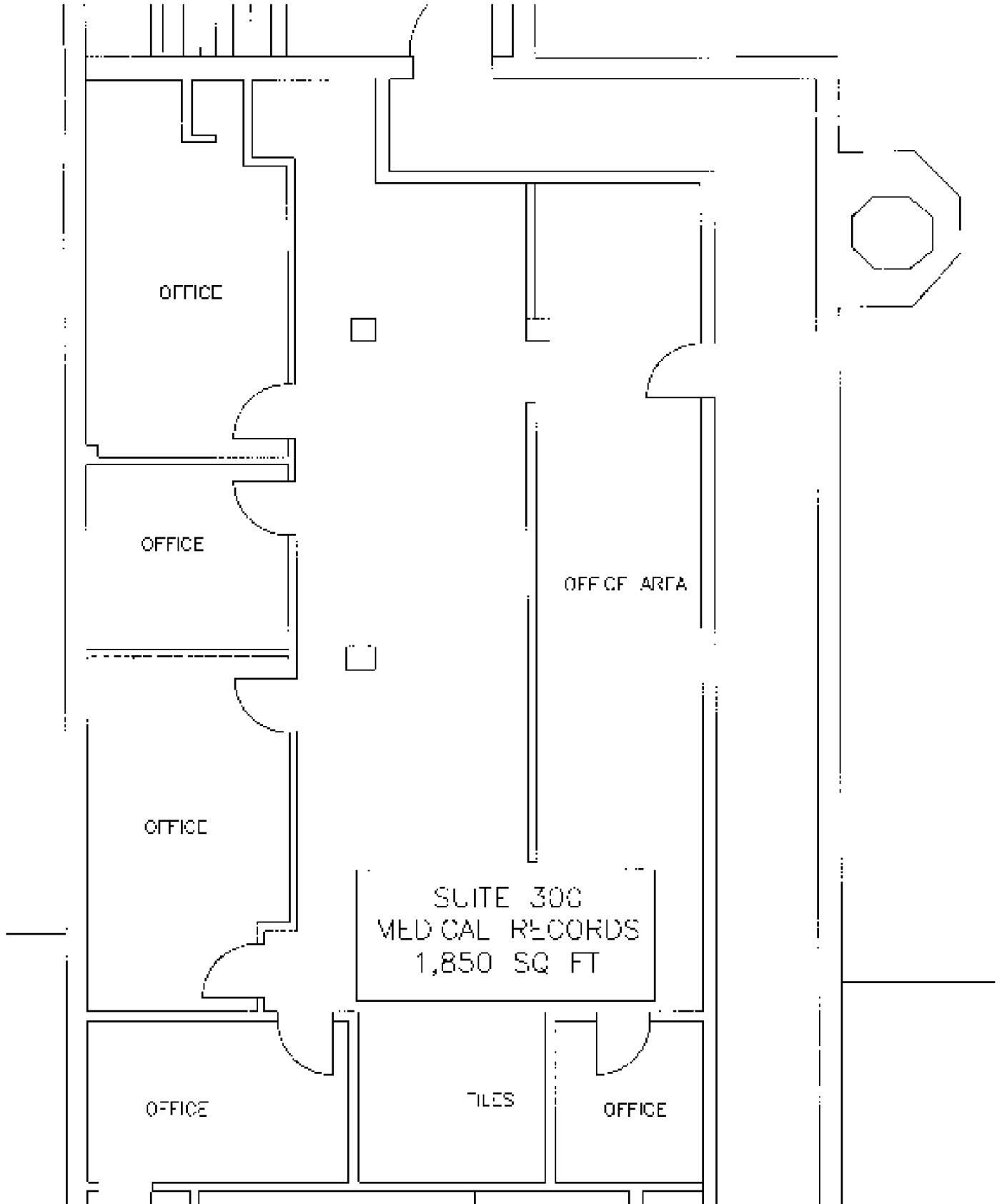


JAMESON.

SUITE 300: 1,850 RSF, \$3,392/MONTH

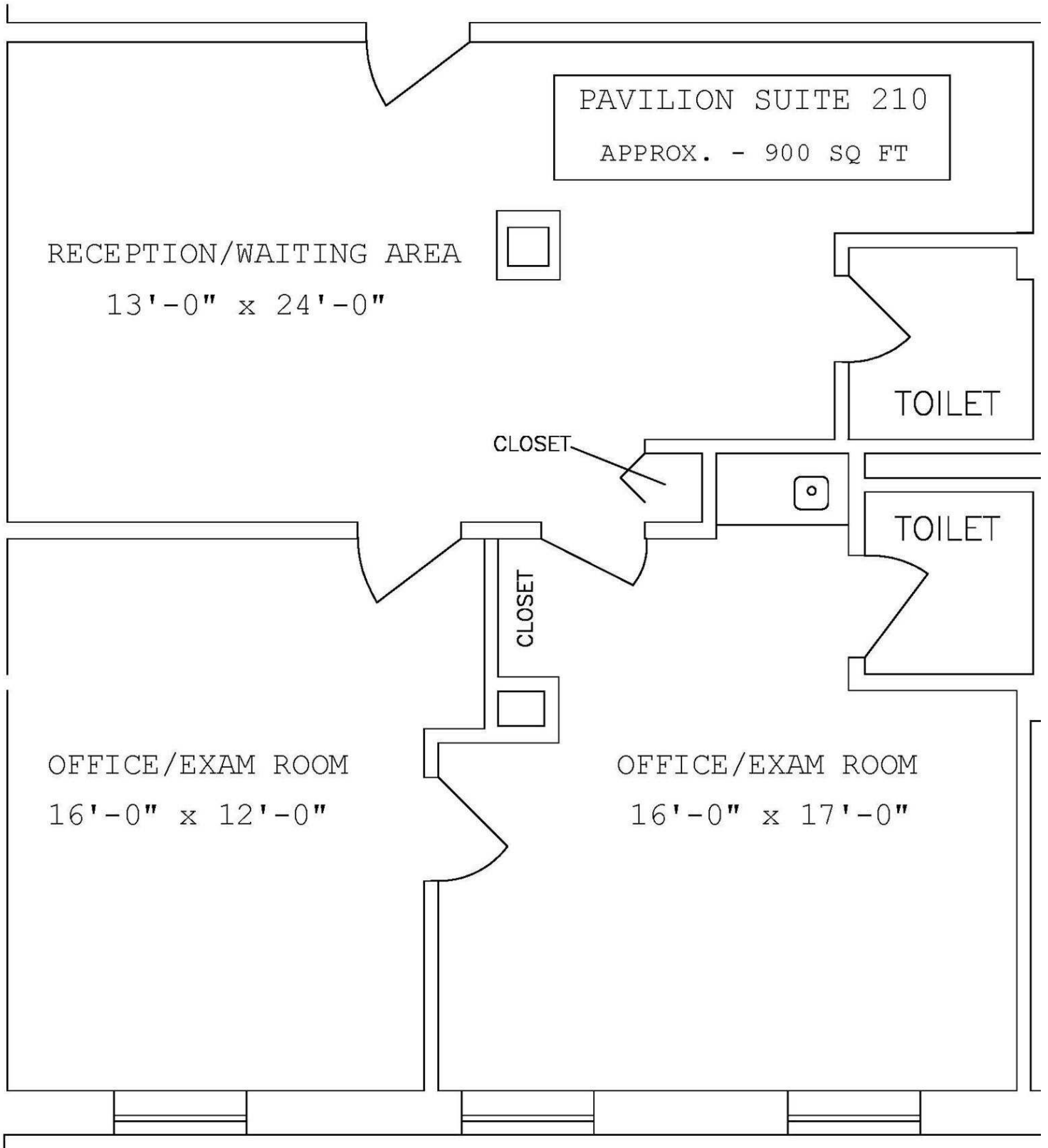
5015 North Paulina Street, Chicago, IL 60640

\$23.00 SF/yr



SUITE 210: 900 SF

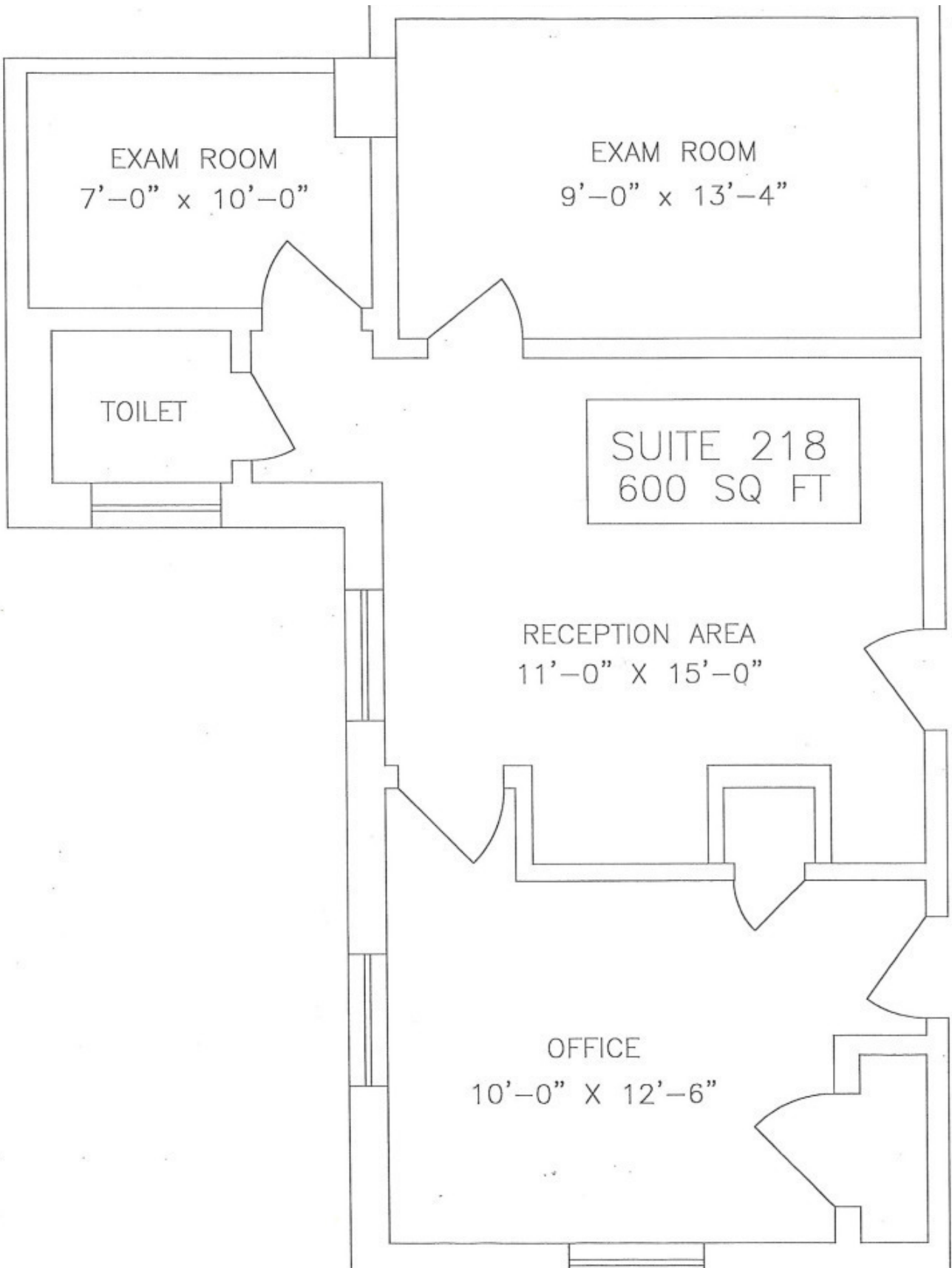
5015 North Paulina Street, Chicago, IL 60640



JAMESON.

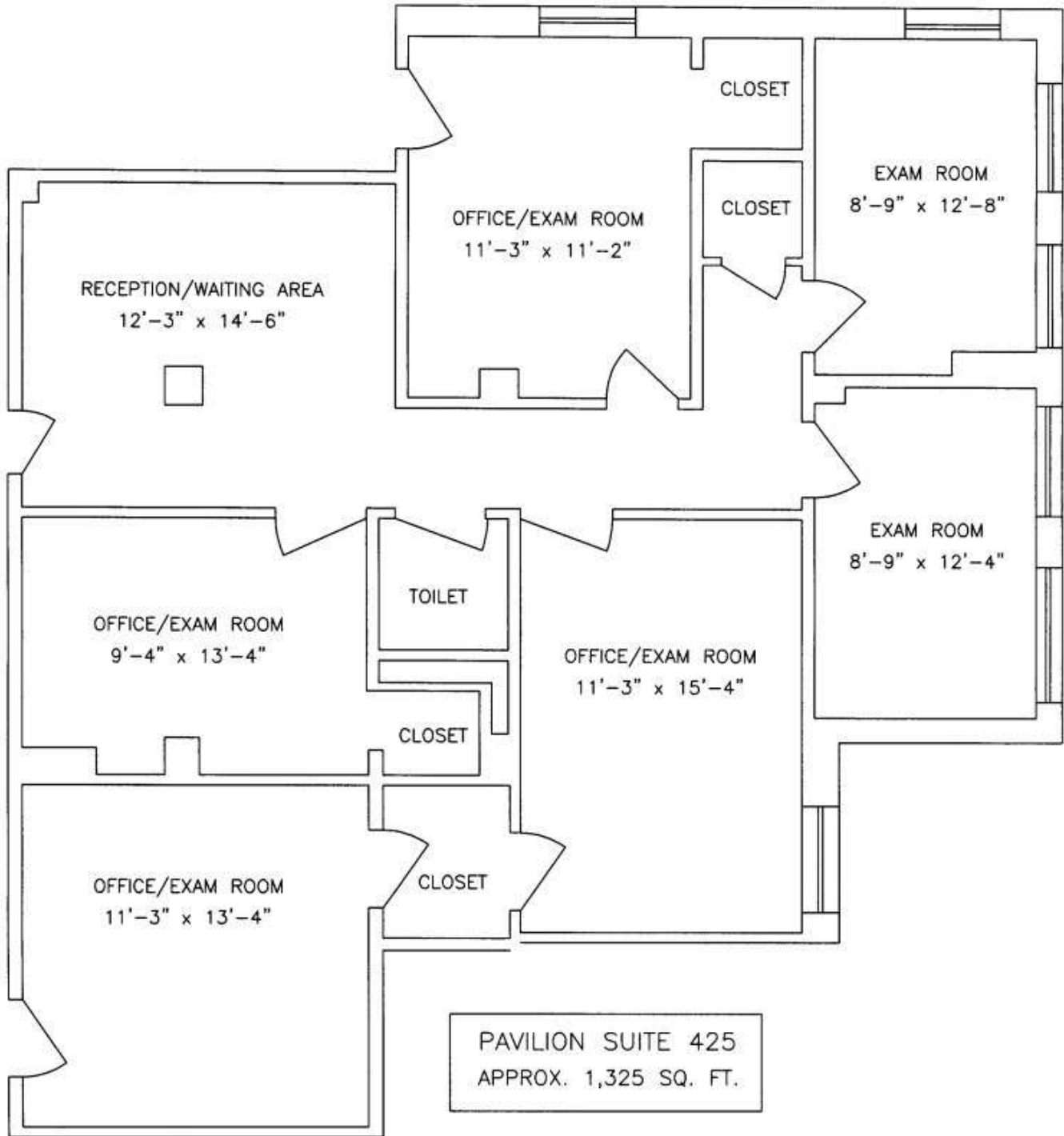
STE. 218: 600 SF

5015 North Paulina Street, Chicago, IL 60640



SUITE 425: 1,325 SF

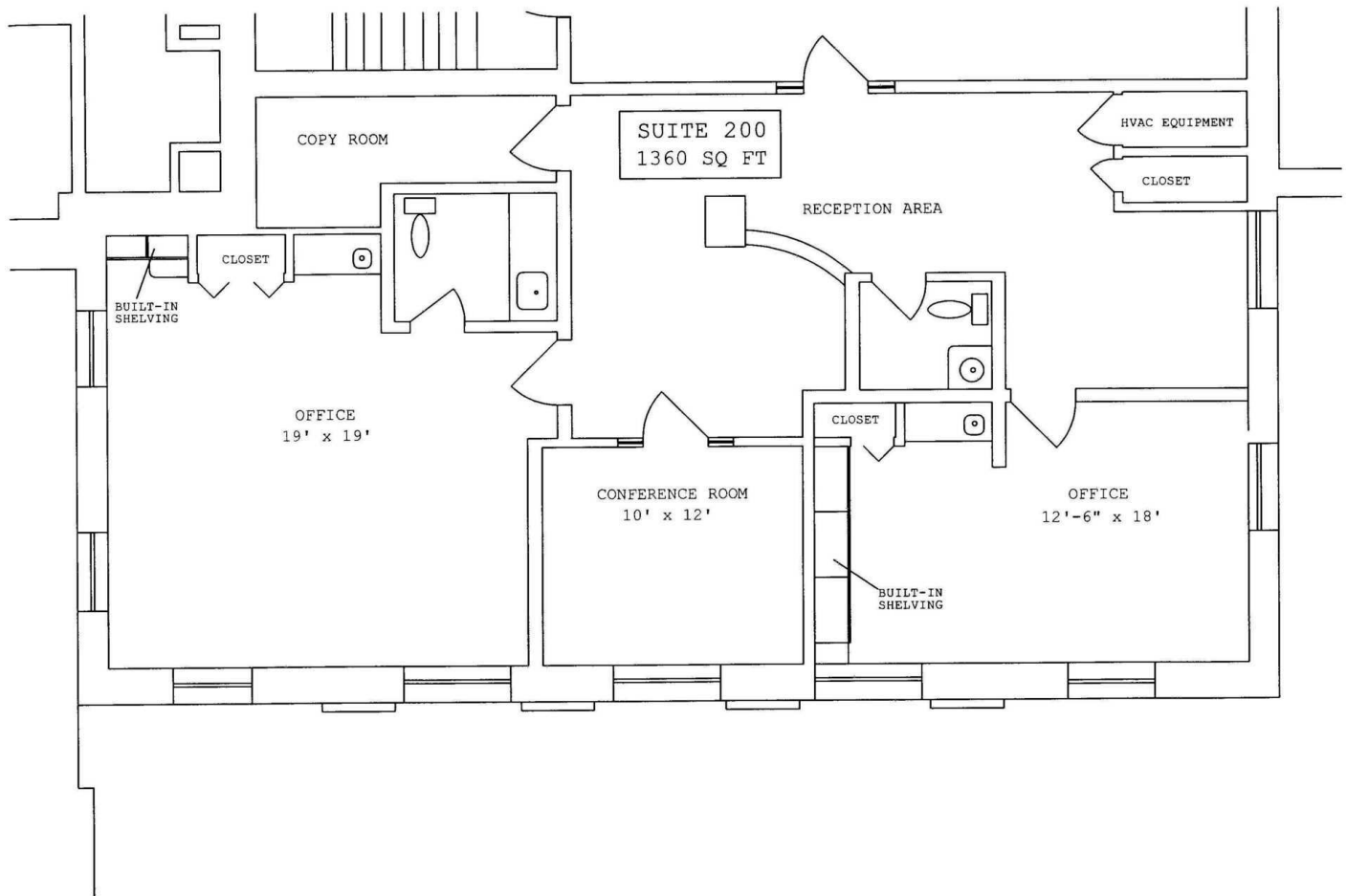
5015 North Paulina Street, Chicago, IL 60640



STE. 200- 1,360 SF

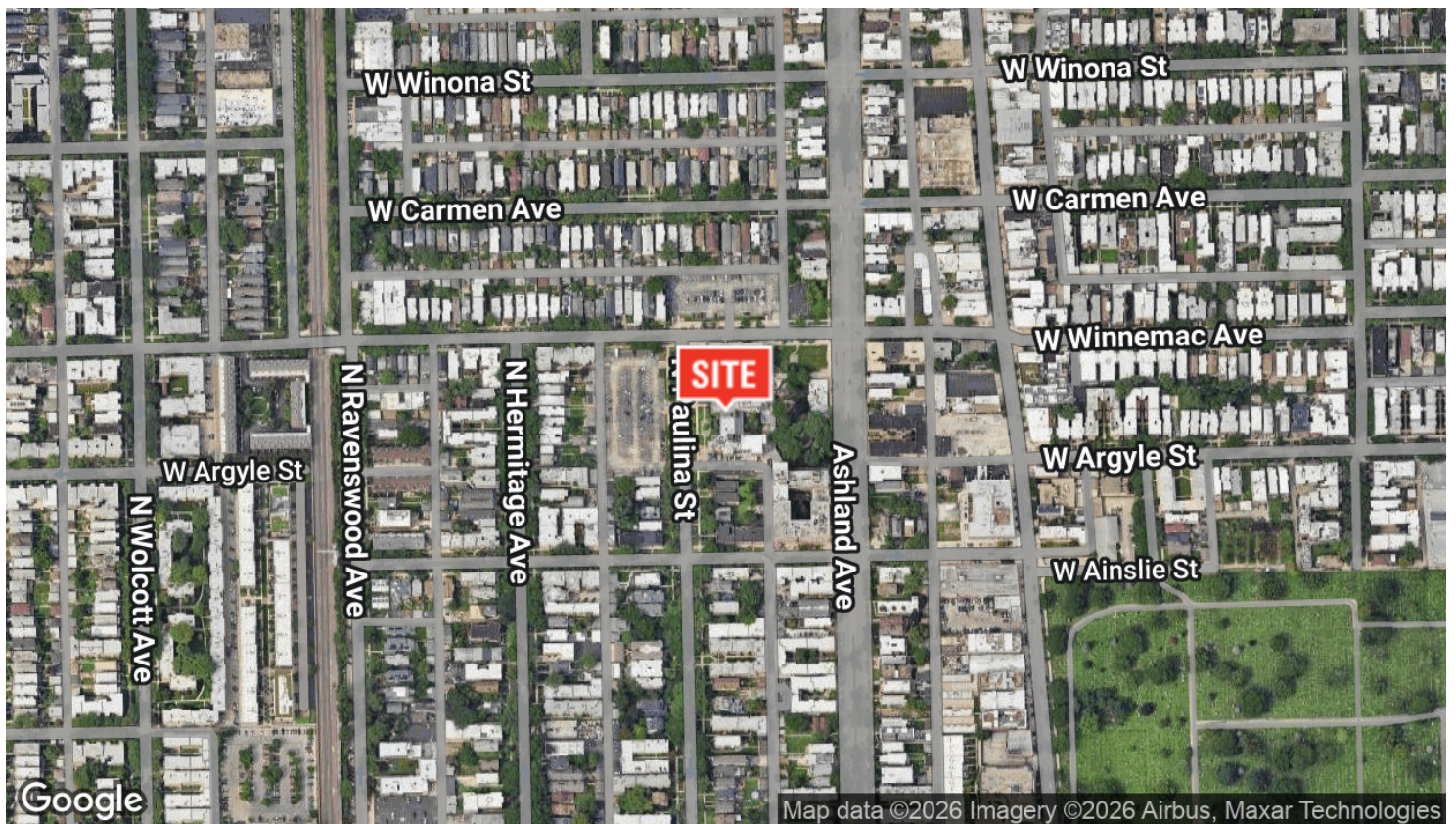
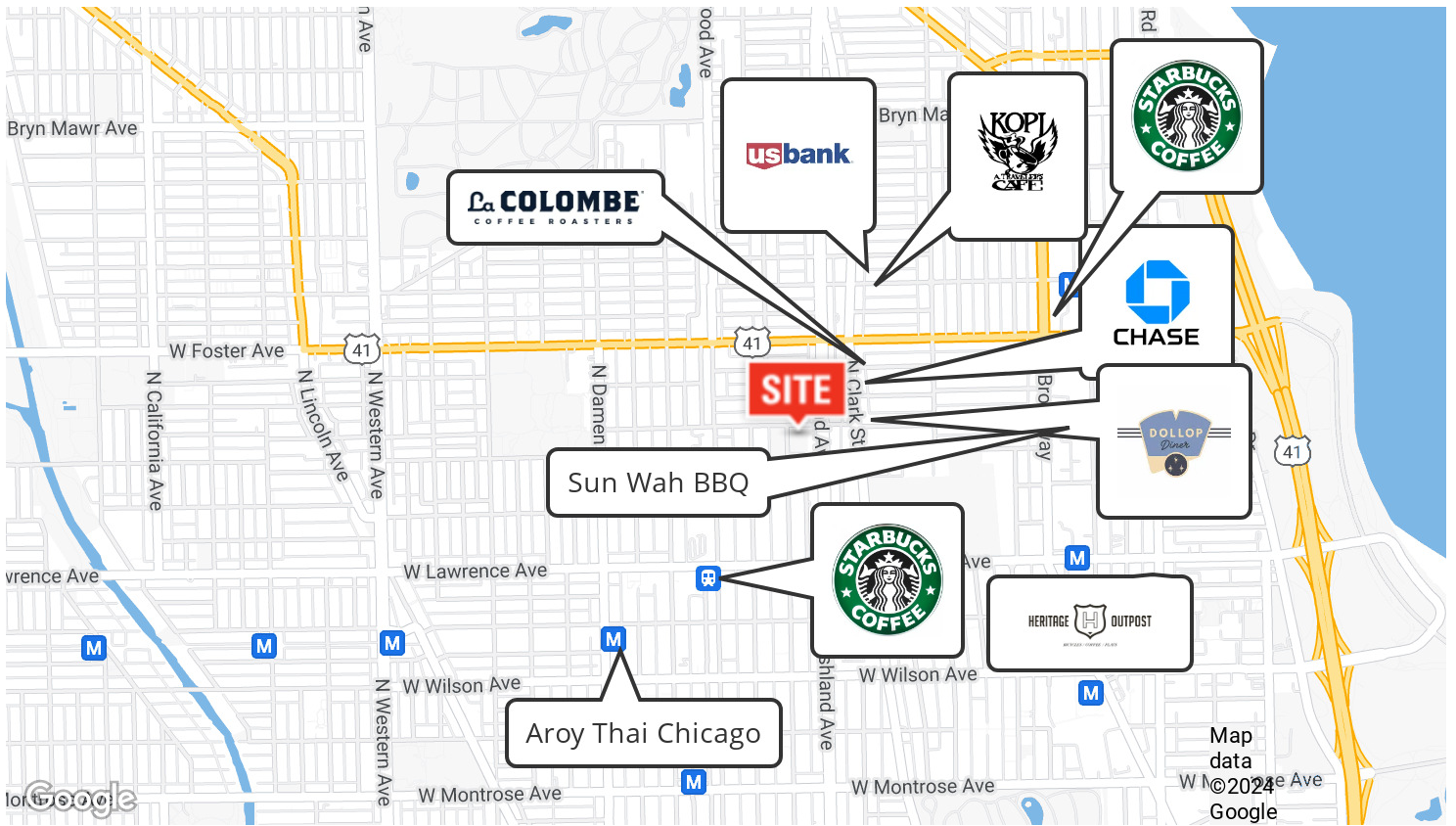
5015 North Paulina Street, Chicago, IL 60640

\$23.00 SF/yr



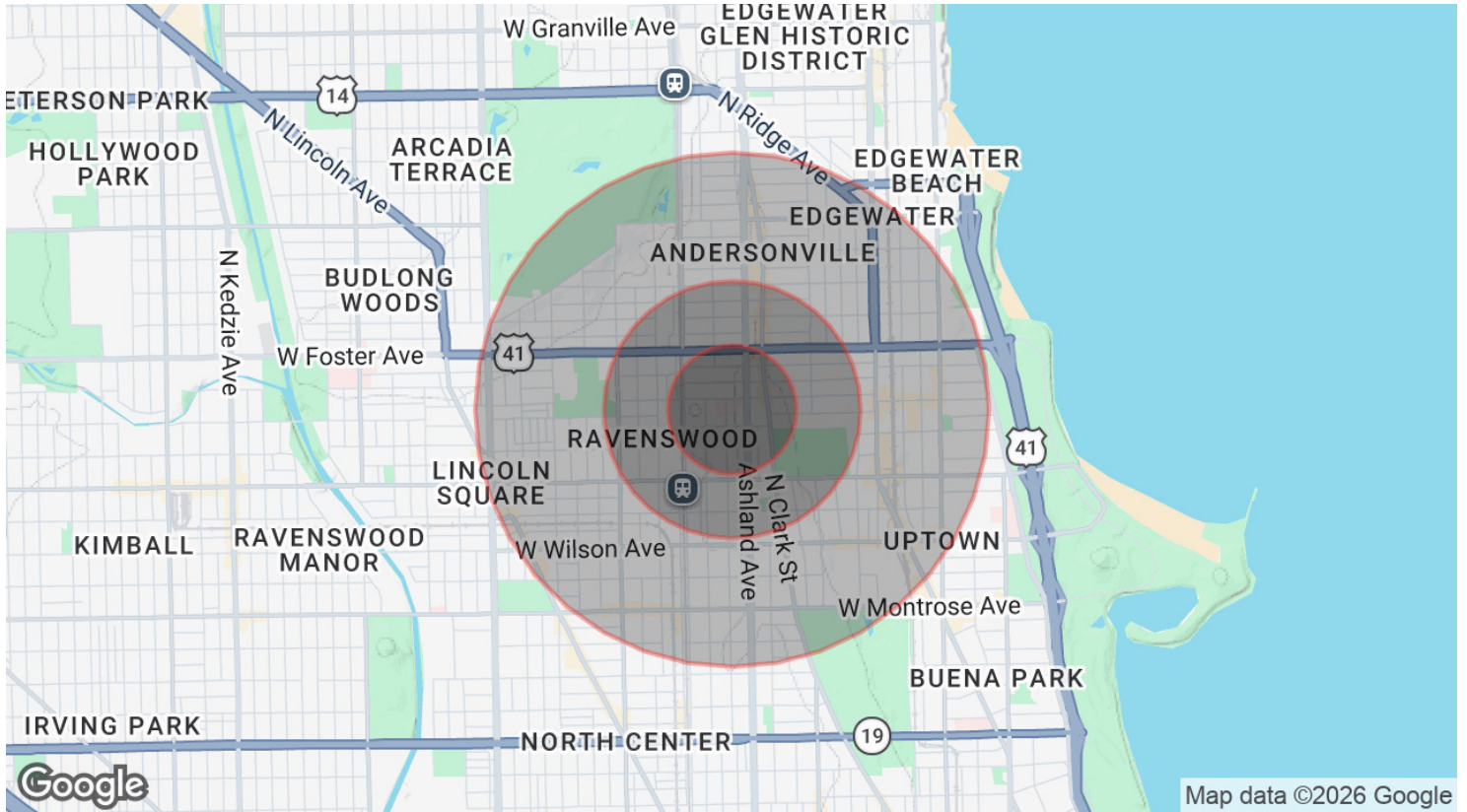
AERIAL & STREET DETAIL

5015 North Paulina Street, Chicago, IL 60640



DEMOGRAPHICS MAP & REPORT

5015 North Paulina Street, Chicago, IL 60640



POPULATION

	0.25 MILES	0.5 MILES	1 MILE
Total Population	4,674	17,646	77,485
Average Age	38.5	35.8	37.2
Average Age (Male)	38.7	36.0	37.3
Average Age (Female)	40.2	36.7	37.5

HOUSEHOLDS & INCOME

	0.25 MILES	0.5 MILES	1 MILE
Total Households	2,627	9,532	41,614
# of Persons per HH	1.8	1.9	1.9
Average HH Income	\$99,493	\$99,126	\$89,983
Average House Value	\$372,381	\$382,124	\$371,870

2020 American Community Survey (ACS)