



# 1400 Crescent Green, Suite 100

Cary, NC 27518

4,313 SF Office Space for Sublease

**RDG** COMMERCIAL

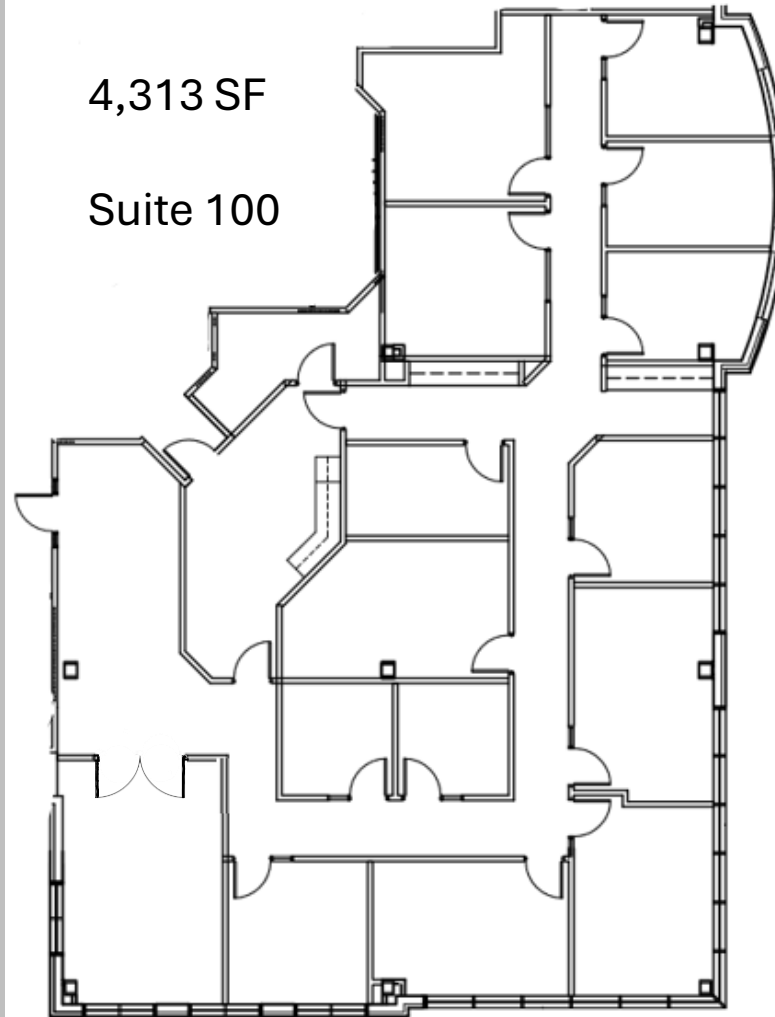


# Property Overview

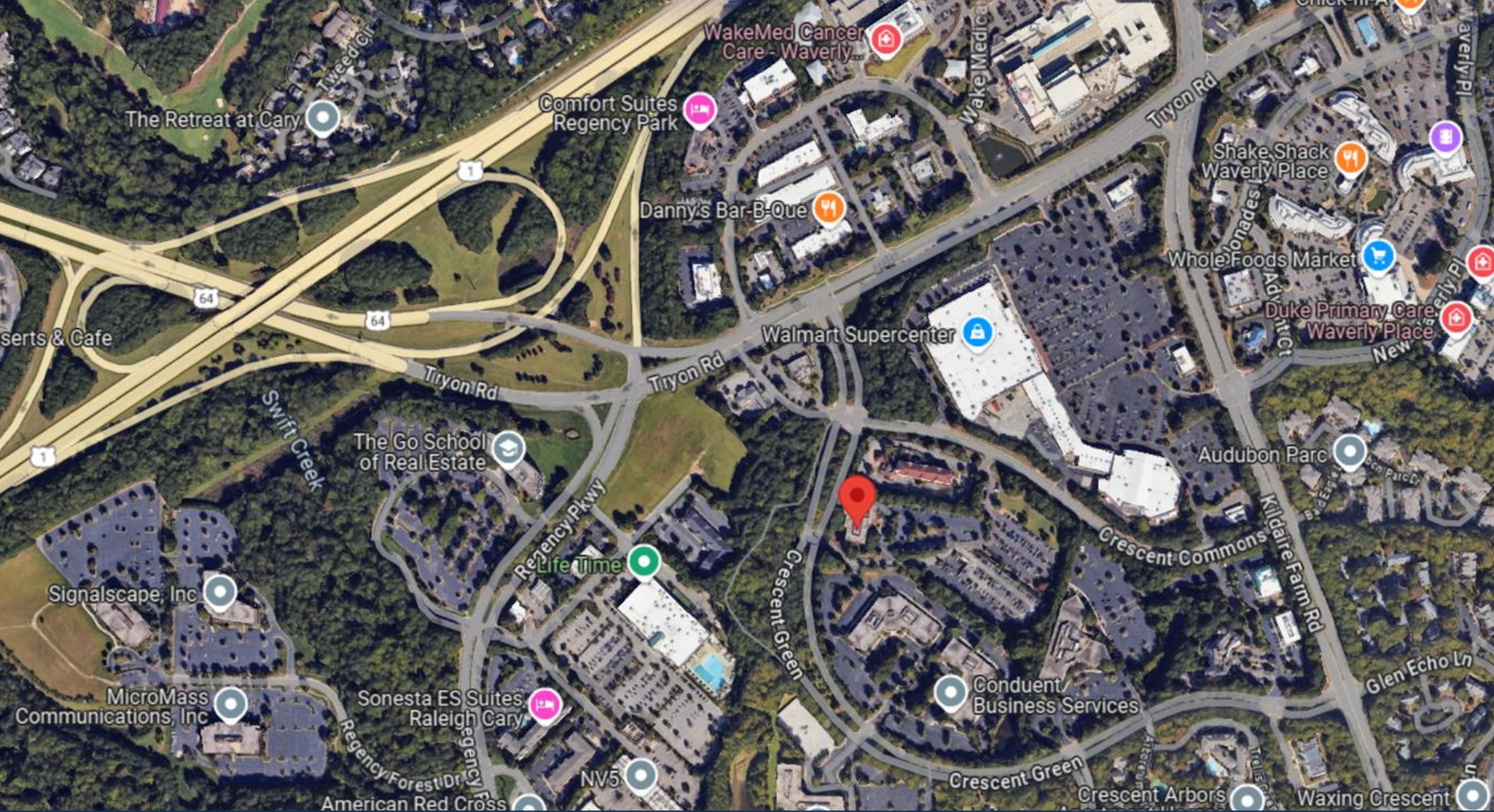
- Size: 4,313 SF
- Available: April 1, 2025
- Sublease term thru: April 30, 2028
- Parking: 3.5/1000
- Lease Rate: Negotiable
- Well-appointed Class A office
- Walkable to Crescent Commons and Waverly Place
- Premier visibility at building entry with lobby exposure



# Space Plan







# Amenities

## Convenience

- Lifetime Fitness
- Harris Teeter
- Wal- Mart
- Walgreens

## Banking

- Bank of America
- Wells Fargo
- PNC Bank
- Chase Bank

## Dining

- Chick-Fil-A
- Whole Foods
- Burger King
- Subway
- Tropical Smoothie Cafe
- Shake Shack
- Lucky 32 Southern Kitchen
- Pizza Hut
- Starbucks
- Chicken Salad Chick



