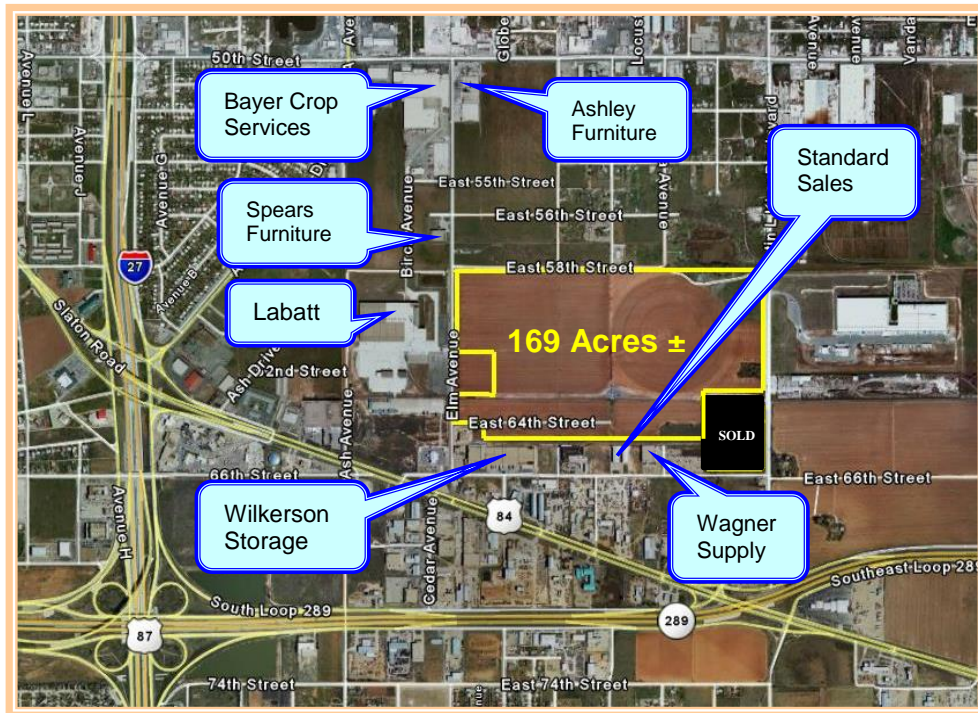


## FOR SALE Industrial Land Near US 84 and MLK Blvd Lubbock, TX



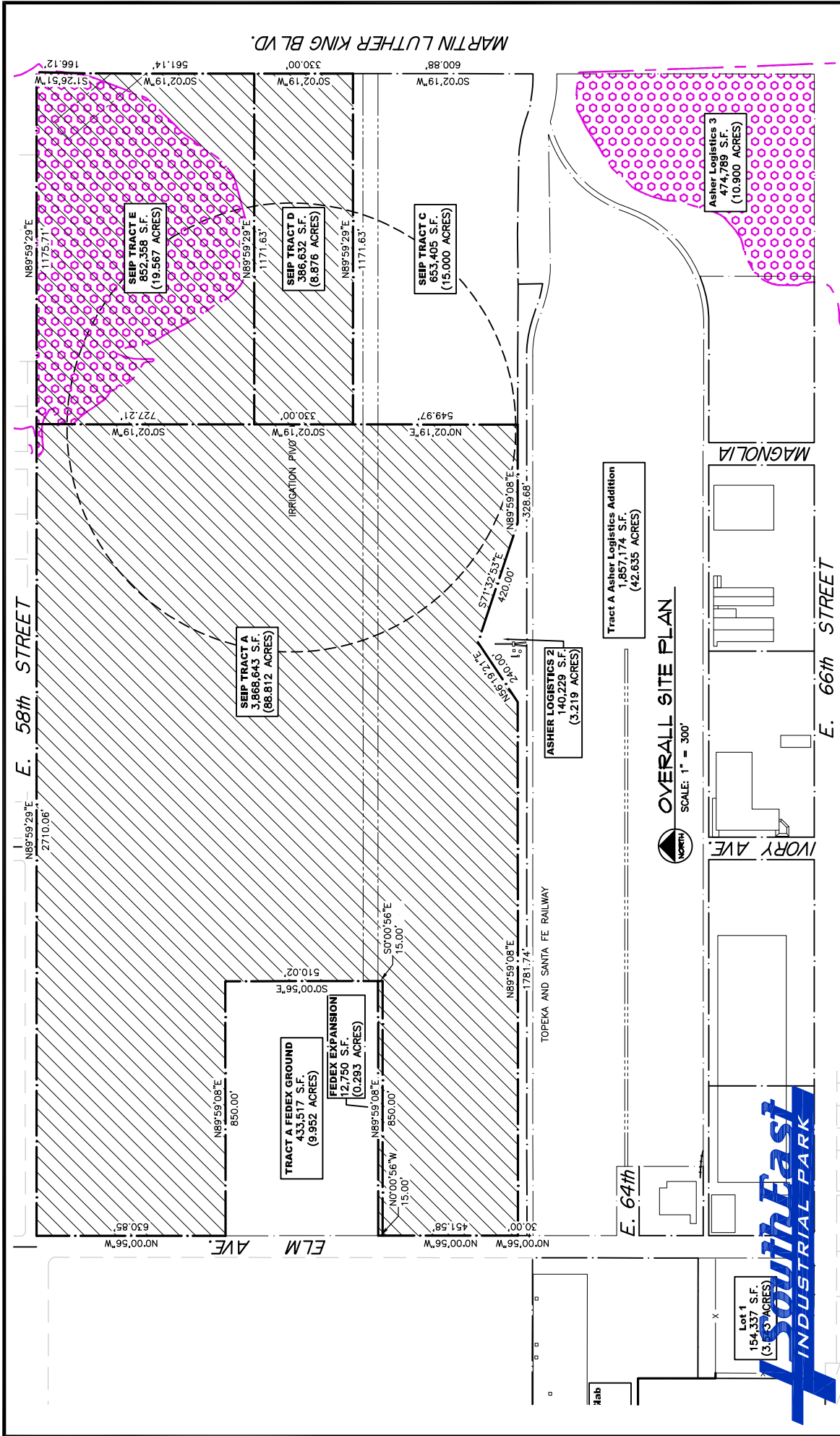
- Unit Size:**
- Tracts from 1 to 169 acres ±
- Zoning:**
- M-1
- Features:**
- Rail service available
  - Good access to I-27 & Loop 289
- Pricing:**
- Call for specifics
  - Varies according to size and location of tract
- Description:**
- Excellent Industrial site
  - Other companies in area include Bayer Crop Science, Wagner Supply, Ashley Furniture, Labatt Food Service, Standard Sales, Spears Furniture and Wilkerson Storage Company.

### Commercial & Industrial Construction, Development, Management & Brokerage

Gordon Wilkerson  
Mobile: 806-441-4307  
Home: 806-794-7640  
gwilk@wilkersonstorage.com

David Wilkerson  
Mobile: 806-441-2200  
Home: 806-785-2087  
davewilk@wilkersonproperties.com

[www.wilkersonproperties.com](http://www.wilkersonproperties.com)



MARTIN LUTHER KING BLVD.

E. 58th STREET

E. 64th

E. 66th STREET

ELM AVE

IVORY AVE

MAGNOLIA

TRACT A FEDEX GROUND  
433,517 S.F.  
(9.952 ACRES)

FEDEX EXPANSION  
12,750 S.F.  
(0.293 ACRES)

SEIP TRACT A  
3,868,643 S.F.  
(88.812 ACRES)

SEIP TRACT E  
852,358 S.F.  
(19.567 ACRES)

SEIP TRACT D  
386,632 S.F.  
(8.876 ACRES)

SEIP TRACT C  
653,409 S.F.  
(15.000 ACRES)

ASHER LOGISTICS 2  
140,229 S.F.  
(3.219 ACRES)

TRACT A Asher Logistics Addition  
1,857,174 S.F.  
(42.635 ACRES)

Asher Logistics 3  
474,789 S.F.  
(10.900 ACRES)

Lot 1  
154,337 S.F.  
(3.53 ACRES)

TOPEKA AND SANTA FE RAILWAY

IRRIGATION PIVOT

SCALE: 1" = 300'



Commercial & Industrial  
Development, Management & Brokerage  
Phone: (806) 474-2223  
Fax: (806) 474-2216  
501 E. 66th Street  
Lubbock, Texas 79404

**Wikerson**  
PROPERTIES INC.

SouthEast Industrial Park  
Date: 09/22/2014 Rev: 10/22/2014  
Drawn by: JMT  
Checked by:

Notes:  
02/13/2017

Area:

C1