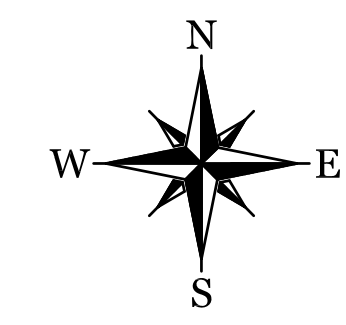
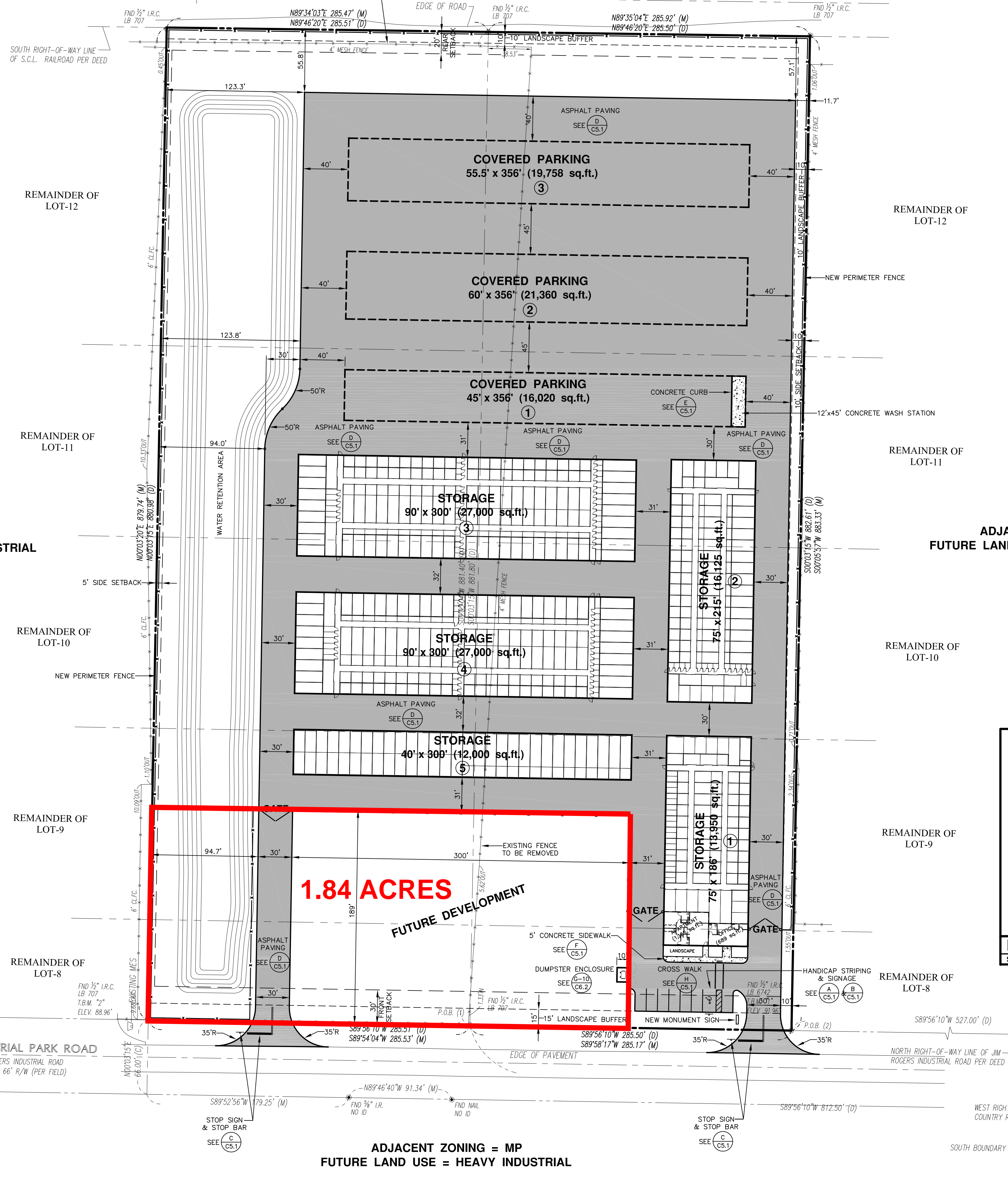


ADJACENT ZONING = R-6
 FUTURE LAND USE = HEAVY INDUSTRIAL



S.C.L. RAILROAD (PER PLAT)
 PARCEL ID:
 15-20-24-0004-000-10300

ROADSIDE SUBDIVISION
 (O.R.B. 4051, PAGE 1502)

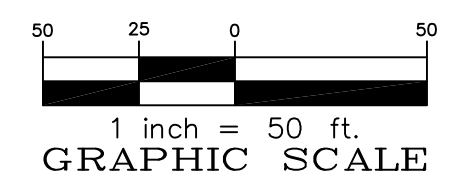
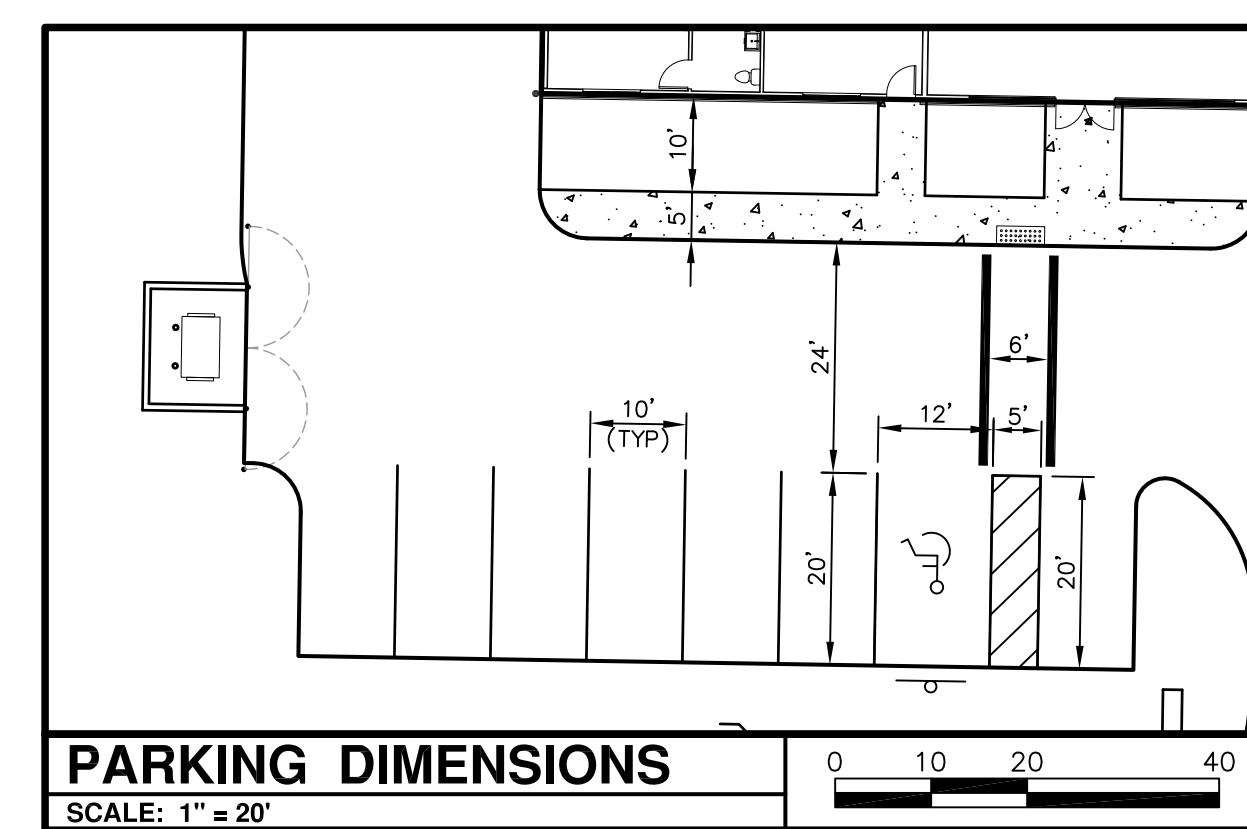


ADJACENT ZONING = HM
 FUTURE LAND USE = HEAVY INDUSTRIAL

ADJACENT ZONING = HM
 FUTURE LAND USE = HEAVY INDUSTRIAL

1.84 ACRES

FUTURE DEVELOPMENT



RIDDLE - NEWMAN ENGINEERING, INC.
 115 NORTH CANAL STREET
 LEESBURG, FLORIDA 34748
 PHONE (352) 787-7482
 FAX (352) 787-7412
 keith@riddlenewman.com
 CA# 0002883

RIDDLE NEWMAN ENGINEERING INC.
 ESTABLISHED 1971

REV #5	REV #4	REV #3	REV #2	REV #1
--------	--------	--------	--------	--------

THIS ITEM HAS BEEN ELECTRONICALLY SIGNED AND SEALED BY KEITH RIDDLE. A PRINTED COPY OF THIS DOCUMENT IS NOT CONSIDERED BOUND AND SEALED AND THE SIGN AUTHENTICATION CODE MUST BE VERIFIED ON ANY ELECTRONIC COPY.

DRAWN: R.S.H.	CHECKED: K.E.R.	SCALE: 1"=50'	DATE: 5/9/23	PROJECT NO: 22.15
---------------	-----------------	---------------	--------------	-------------------

GEOMETRY PLAN
FORT KNOX SELF STORAGE
 FLORIDA

SHEET NO.
C2.1

FILE: \2215\Fort Knox Self Storage - Ocala.mxd © 2023 RIDDLE - NEWMAN ENGINEERING, INC. ALL RIGHTS RESERVED.