

# LEASE



1022  
SANTA FE  
AVENUE  
ARTS DISTRICT  
LOS ANGELES

FLEX GARAGE  
WAREHOUSE





SOHO HOUSE

1022  
**SANTA FE**  
AVENUE  
LOS ANGELES

Mandolina  
*Taverna*





# LEASE DETAILS

1022 SANTA FE AVENUE  
ARTS DISTRICT, DTLA 90021

## ASKING

\$2.50/SF NNN  
(\$1.00/SF Nets)

## SIZE

5,600 SF

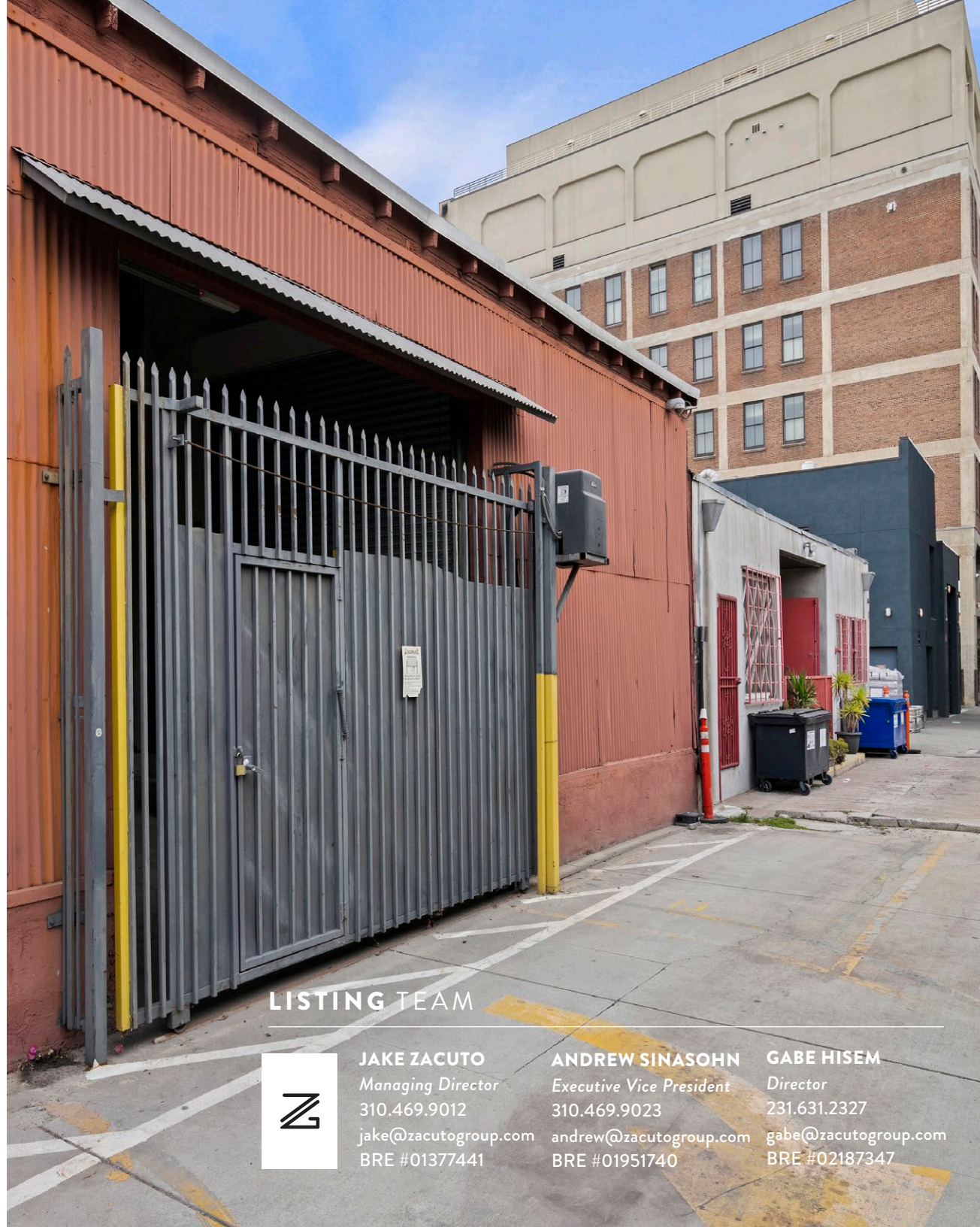
## TERM

Negotiable

## LOCATION

Arts District

- Polished flex space in ULTRA prime DTLA Arts District, adjacent to Soho House / Warner Music Group
- Currently used as private car garage, ideal for showroom and creative users
- Front and rear roll up/gated doors
- 18' ceilings
- Completely modernized with custom lighting, skylights and high design detailing
- Bi-level loft space dedicated entry, restroom and storage.
- Additional storage/studio space in rear



## LISTING TEAM



### JAKE ZACUTO

Managing Director

310.469.9012

jake@zacutogroup.com

BRE #01377441

### ANDREW SINASOHN

Executive Vice President

310.469.9023

andrew@zacutogroup.com

BRE #01951740

### GABE HISEM

Director

231.631.2327

gabe@zacutogroup.com

BRE #02187347





1022

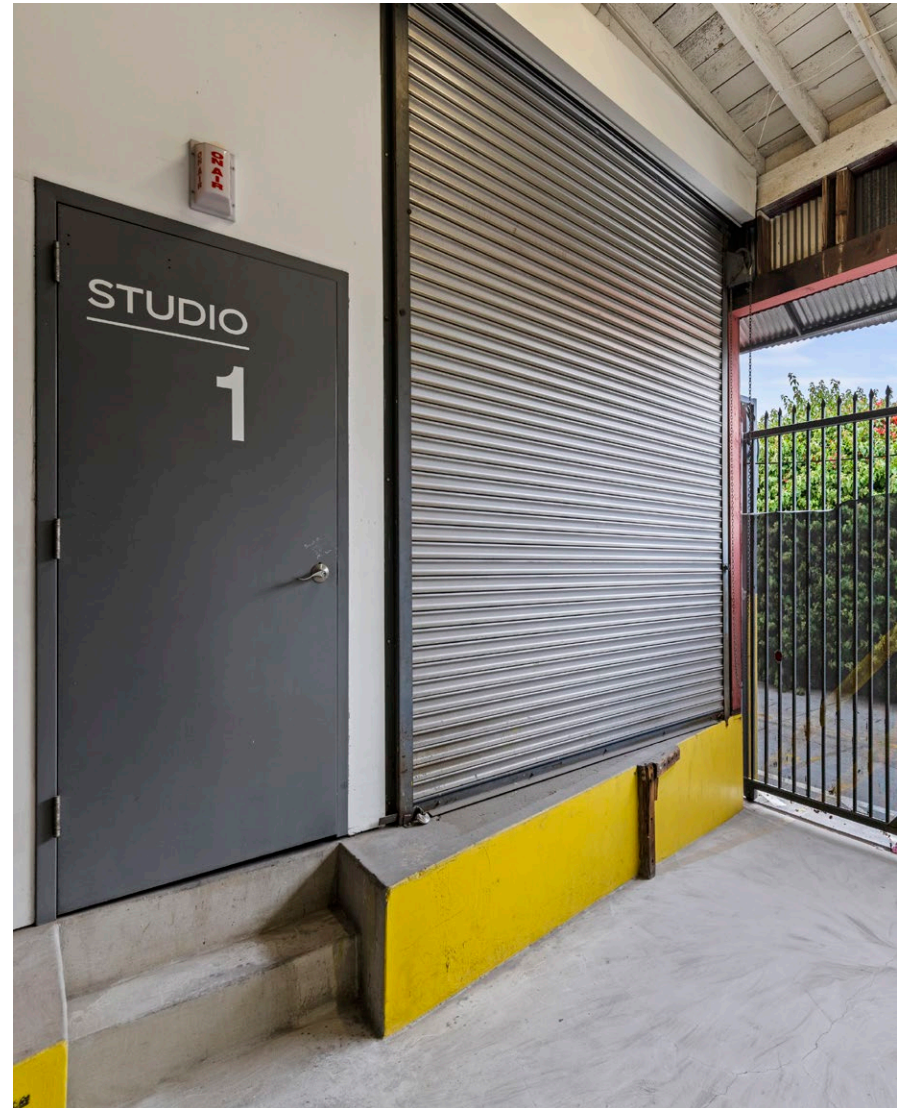
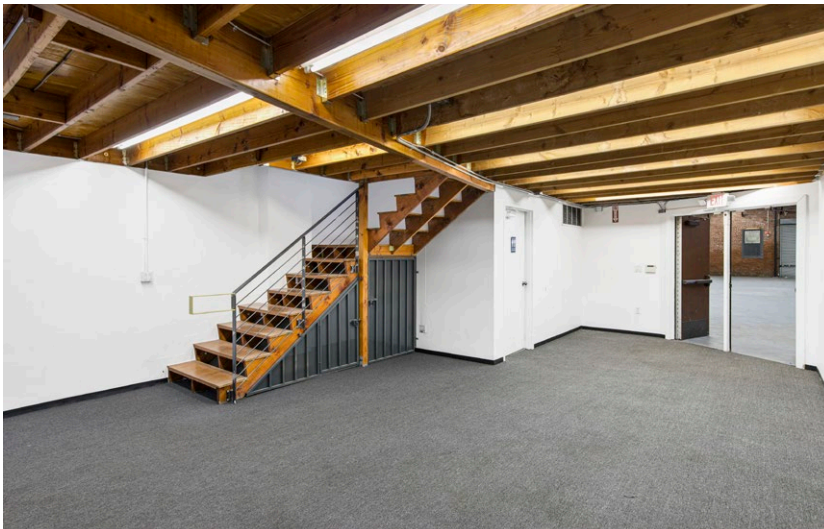
SANTA FE  
AVENUE

ARTS DISTRICT  
LOS ANGELES



LEASE

1022 S. SANTA FE AVENUE, DOWNTOWN LOS ANGELES, CA





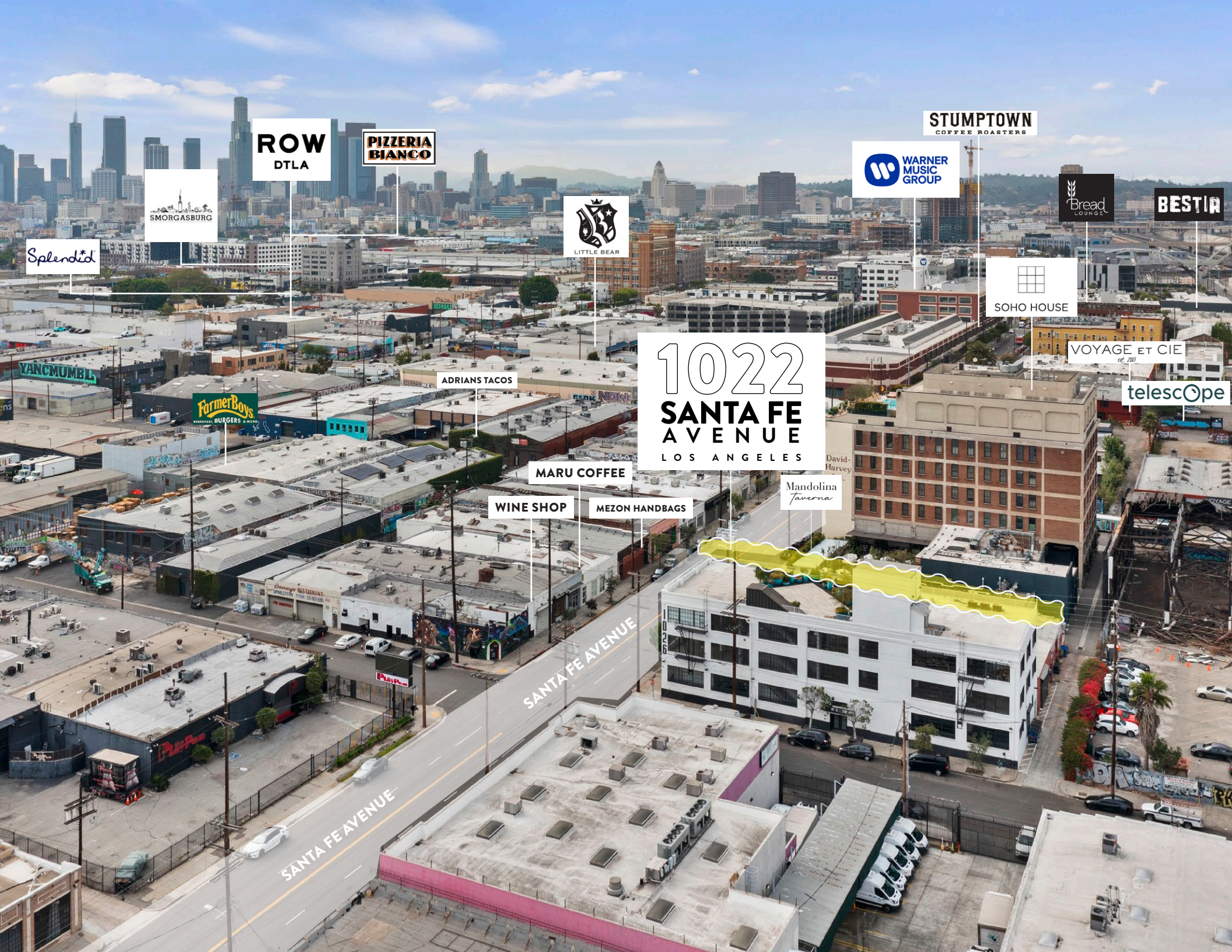


1022

SANTA FE  
AVENUE

ARTS DISTRICT  
LOS ANGELES



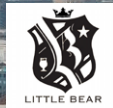


ROW  
DTLA

PIZZERIA  
BIANCO



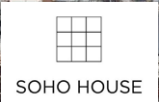
Splendid



STUMPTOWN  
COFFEE ROASTERS



BESTIA



VOYAGE ET CIE  
est. 2005

telescOpe

1022  
SANTA FE  
AVENUE  
LOS ANGELES

ADRIANSTACOS



MARU COFFEE

WINE SHOP

MEZON HANDBAGS

Mandolina  
Taverna

SANTA FE AVENUE

SANTA FE AVENUE



## THE BEST OF DOWNTOWN LOS ANGELES

1022 S. SANTA FE AVENUE, DOWNTOWN LOS ANGELES, CA



kodō

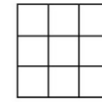
MARU COFFEE

BAVEL

PIZZAN/STA!



ZINC  
CAFE | MARKET | BAR



SOHO HOUSE

STUMPTOWN  
COFFEE ROASTERS



GIRL & THE GOAT







1022 South Santa Fe Avenue

**1022**  
**SANTA FE**  
**AVENUE**  
ARTS DISTRICT  
LOS ANGELES



1022  
**SANTA FE**  
**A V E N U E**  
A R T S   D I S T R I C T  
L O S   A N G E L E S



**ZACUTO GROUP**  
C O M M E R C I A L   R E A L   E S T A T E

**JAKE ZACUTO**

*Managing Director*

**310.469.9012**

**jake@zacutogroup.com**

**BRE #01377441**

**ANDREW SINASOHN**

*Executive Vice President*

**310.469.9023**

**andrew@zacutogroup.com**

**BRE #01951740**

**GABE HISEM**

*Director*

**231.631.2327**

**gabe@zacutogroup.com**

**BRE #02187347**

*No warranty, express or implied, is made as to the accuracy of the information contained herein. This information is submitted subject to errors, omissions, change of price, rental or other conditions, withdrawal without notice. All parties who receive this material should not rely on it, but should use it as a starting point of analysis, and should independently confirm the accuracy of the information contained herein through a due diligence review of the books, records, files and documents that constitute reliable sources of the information described herein. Logos and images are for identification purposes only and may be trademarks of their respective companies. All terms provided are approximate. Leasee to verify. 6/2023*

**ZACUTOGROUP.COM | 310-469-9300**

