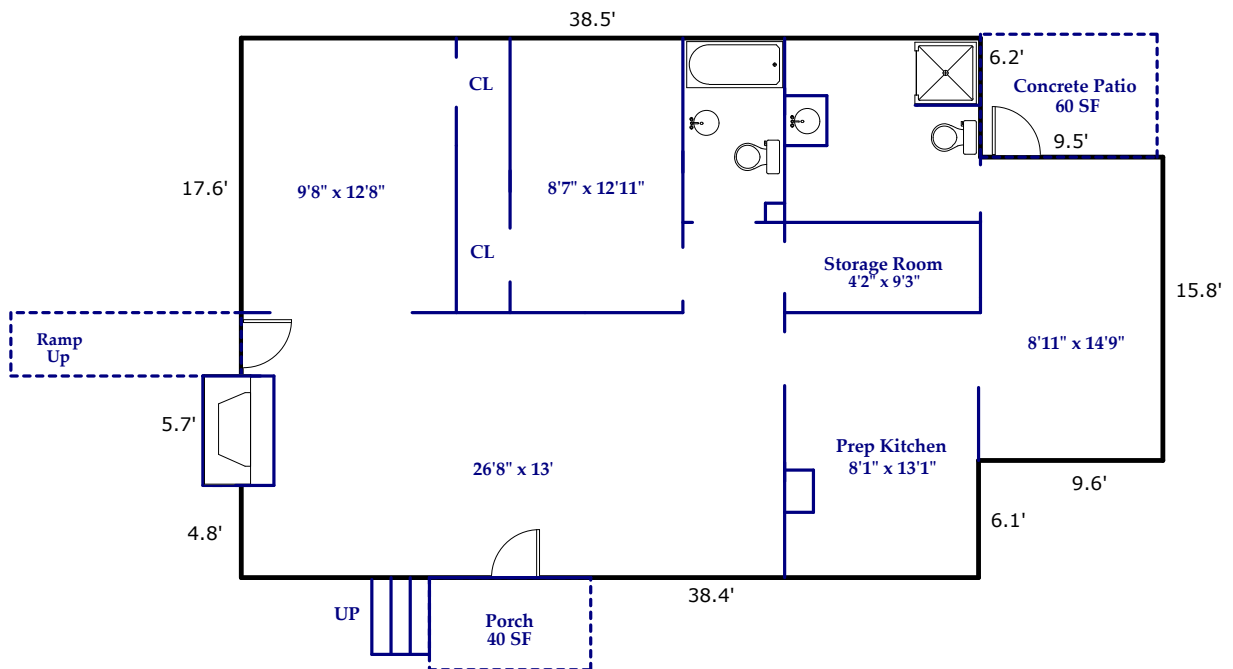


1207 Charlotte Highway, Fairview

Gross Building Area:
1231 Square Feet

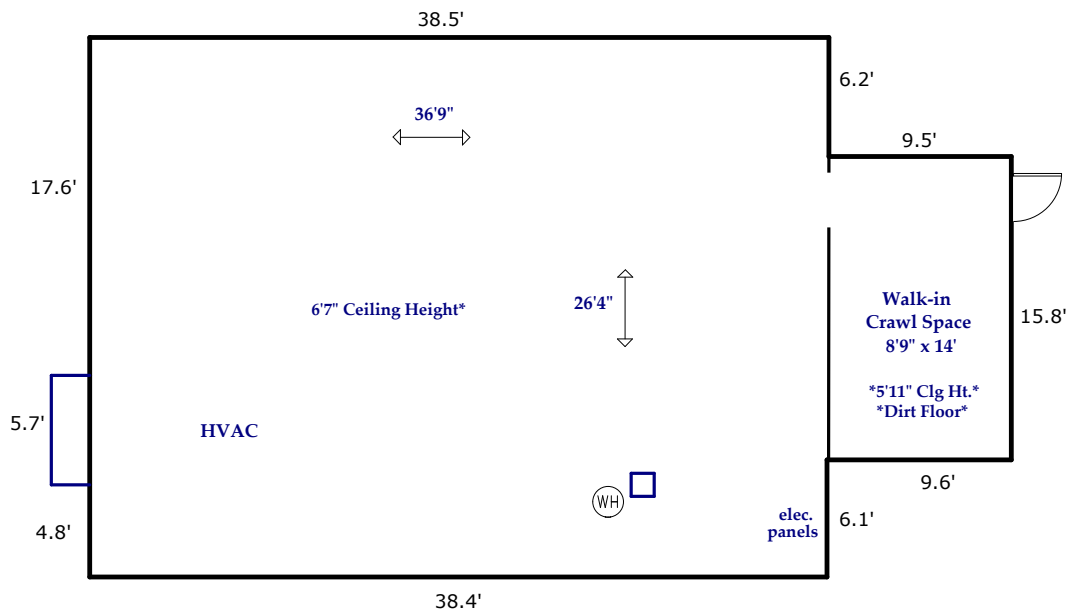


MAIN LEVEL
1231 Square Feet

Prepared by Judy Brouillette-O'Neil: ProPlans of the Carolinas, LLC
for Carla & Company Real Estate Services



All dimensions are rounded to the nearest .01 and are deemed reliable, but not guaranteed.
Square Footage Calculations determined following ANSI and BOMA Standards and NCREC House Measuring Square Footage Guidelines.



UNFINISHED BASEMENT
1081 Square Feet
Outside Entrance

Total Square Footage Under Roof for All Finished/Unfinished & Heated/Unheated Areas:
2312 Square Feet

Does Not Include Crawl Space