

1 ENLARGED FIRST FLOOR PLAN - TENANT 3
SCALE: 3/16" = 1'-0"

TENANT 5
12,214 SF OVERALL

Notes:

PARTITION LEGEND	
[Symbol]	EXISTING WALL, VERIFY CONSTRUCTION IN FIELD
[Symbol]	BRICK VENEER EXTERIOR WALL W/ MTL STUD BACK-UP
[Symbol]	CMU WALL
[Symbol]	INTERIOR PARTITION

FIRE EXTINGUISHER	
FE-1	SURFACE MOUNT FIRE EXTINGUISHER, JL INDUSTRIES COSMIX SX
FE-2	RECESSED FIRE EXTINGUISHER, 1-1/2" TRIM, JL INDUSTRIES COSMIX SX, CABINET #1826G17, MILL FINISH

- PARTITION NOTES**
- ALL WALLS NOT KEYED IN BY WALL TYPE DESIGNATION TO BE PARTITION 'F2', TYP.
- DIMENSIONING NOTES**
- EXTERIOR MASONRY WALLS ARE DIMENSIONED TO THE FACE OF MASONRY
 - INTERIOR MASONRY WALLS ARE DIMENSIONED TO THE FACE OF MASONRY
 - WOOD FRAMED EXTERIOR WALLS ARE DIMENSIONED TO THE EXTERIOR FACE OF STUD.
 - INTERIOR PARTITIONS ARE DIMENSIONED TO THE CENTERLINE, UNON

PLUMBING FIXTURE LIST

L1: LAVATORY	ZURN "Z-5360" SINGLE HOLE WALL HUNG LAVATORY, 30X18", COLOR: WHITE, ADA
WC1: WATER CLOSET	ZURN "Z5551K" FLOOR MOUNTED TANK TYPE TOILET, ADA
J1: JANITOR'S SINK	MUSTEE "63M" 24"x24"x12" FLOOR MOUNTED MOP SINK

BATHROOM ACCESSORIES

PTD: PAPER TOWEL DISPENSER	BRADLEY RECESSED TOWEL DISPENSER / WASTE RECEIPT, MODEL NO. "235"
TPD: TOILET PAPER DISPENSER	BRADLEY SURFACE MOUNTED TOILET PAPER DISPENSER, MODEL NO. "5402"
ND: NAPKIN DISPOSAL	BRADLEY NAPKIN DISPOSAL MODEL NO. "4781-15" AND VENDOR MODEL NO. "428"
GB: GRAB BARS	1-1/2" DIA. 36" & 42" FRANKLIN BRASS "CENTURION" WITH PEENED AND BRIGHT SURFACE & CONCEALED MOUNTING

Architect's Stamp:

Project:
Goulds Plaza
 248-270 Great Rd
 Acton, MA 01720
Client:
Colonial Automotive Group
 171 Great Road, Acton, MA

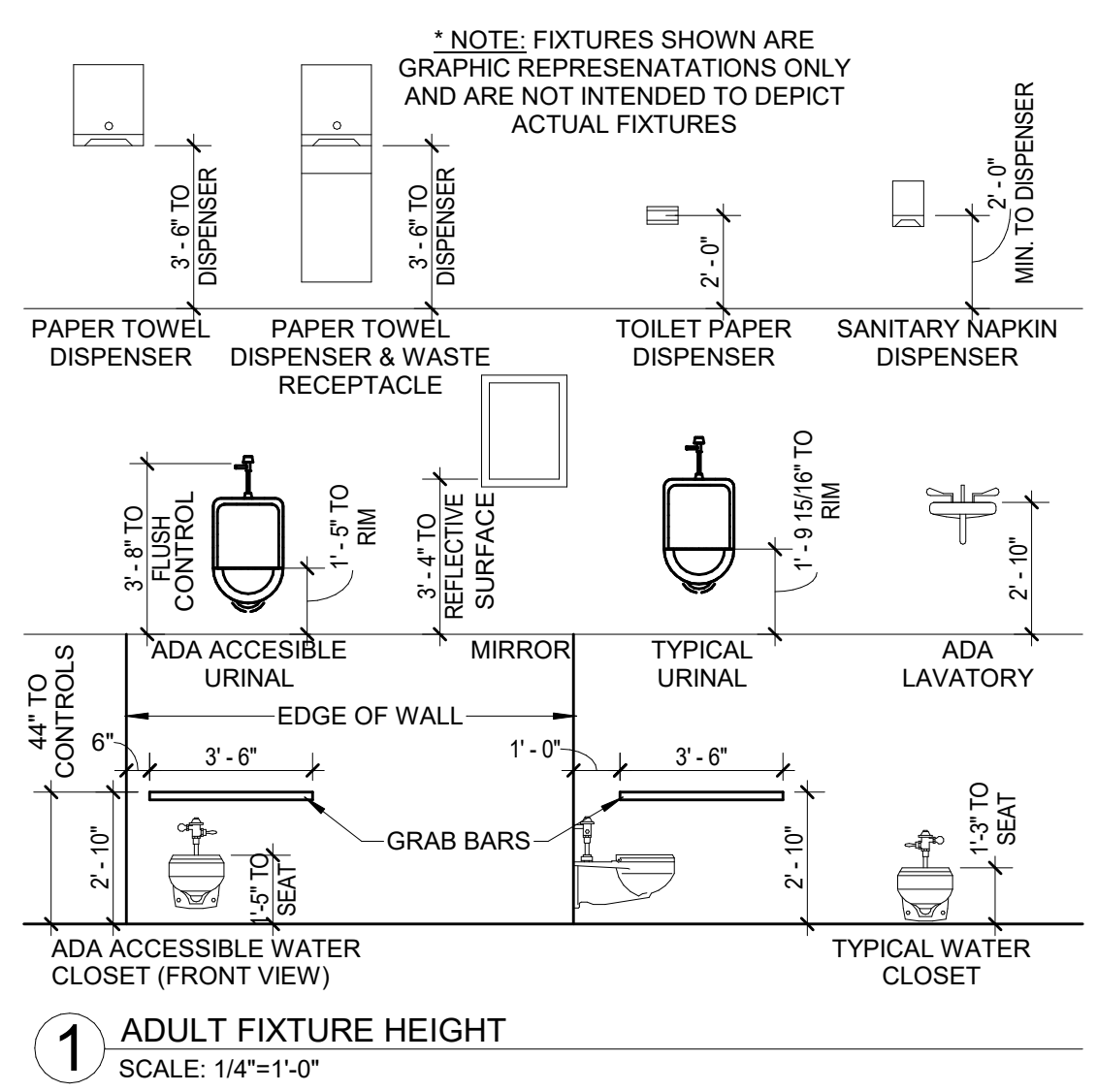
Project #: 23017
Scale: As indicated
Issue: _____ **Date:** _____
 Permit Set _____ 07/14/2023

Revisions:	Date:

Drawing Title:
 PARTIAL FLOOR PLANS

Sheet Number:
A.112

MAUGEL DESTEFANO ARCHITECTS
 200 AVENUE ROAD | SUITE 200
 WILMINGTON, MA 01897
 978-456-2800
 MAUGEL.COM



2 A.611- FIXTURE HEIGHT ELEVATIONS
SCALE: 1/4" = 1'-0"