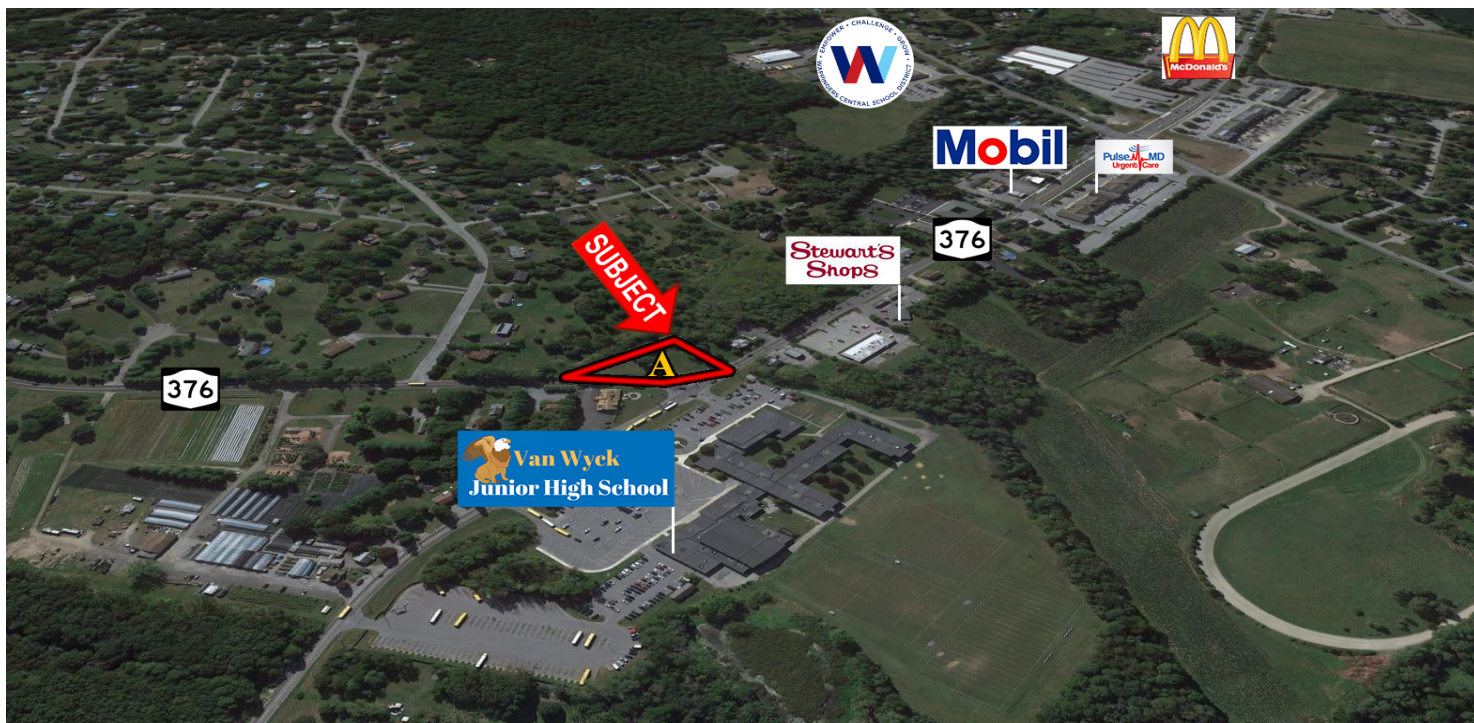




# COMMERCIAL DEVELOPMENT SITE

## 839 NYS ROUTE 376, WAPPINGERS FALLS, NY 12590



### 2,120 SF TOTAL: RETAIL 780 SF, RESTAURANT 1,340 SF

**ADDRESS:** Concept Strip Center (Land)  
839 NYS Route 376  
Wappingers Falls, NY 12590

**ZONING:** General Business District

**BUILDING SIZE:** Retail: 780 SF  
Restaurant: 1,340 SF  
Total SF: 2,120 SF

**LOT SIZE:** 1.06 Acres

**PARKING** 34 Spaces  
Includes 2 Handicap

**TRAFFIC COUNT:** 9,730 AADT on NYS Route 376

**ASKING PRICE:** Sale: \$400,000



#### PROPERTY OVERVIEW:

CR Properties Group is pleased to offer For Sale a Commercial Development Parcel located on 839 NYS Route 376 in Wappingers Falls, NY 12590. The site is in close proximity to the Taconic State Parkway and U.S. Route 9. The land is 1.06 ± acres with 9,730 AADT at NYS Route 376. Area colleges and Institutions include Marist College, The Culinary Institute of America, Vassar College, Dutchess Community College, and Bard College. The property is nearby Van Wyck Junior High School (923 students) and Fishkill Plains Elementary School (560 students).



CR Properties Group, LLC  
295 Main Street  
Poughkeepsie, NY 12601  
[www.crproperties.com](http://www.crproperties.com)



ALL DATA BELIEVED TO BE ACCURATE BUT NOT WARRANTED

For more information:

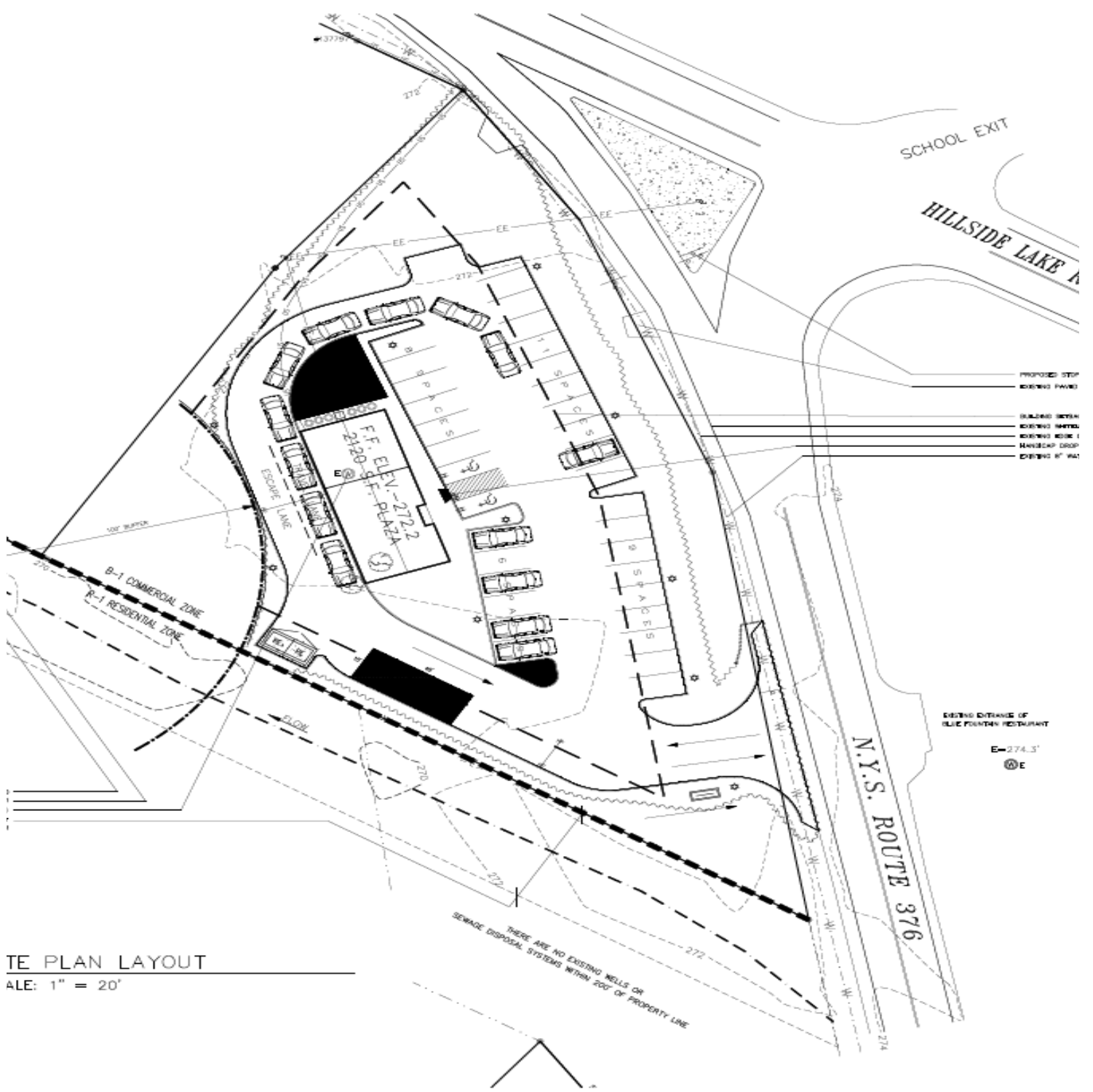
Thomas M. Cervone  
845.485.3100  
[tom@crproperties.com](mailto:tom@crproperties.com)



# SITE PLAN

## 839 NYS ROUTE 376, WAPPINGERS FALLS, NY 12590

### FULL PLANS AVAILABLE UPON REQUEST



**TE PLAN LAYOUT**  
 SCALE: 1" = 20'



CR Properties Group, LLC  
 295 Main Street  
 Poughkeepsie, NY 12601  
[www.crproperties.com](http://www.crproperties.com)



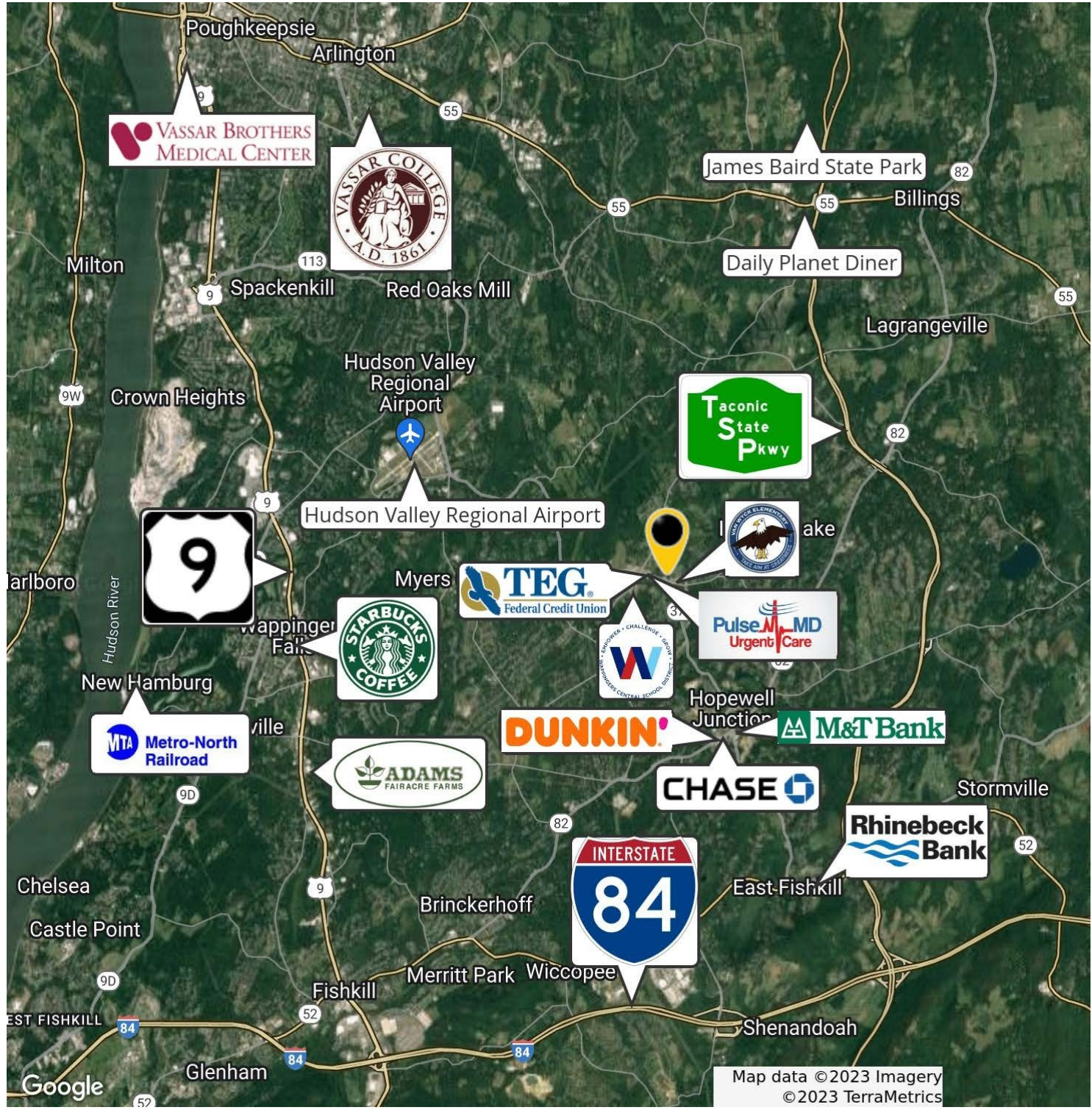
ALL DATA BELIEVED TO BE ACCURATE BUT NOT WARRANTED

For more information:  
 Thomas M. Cervone  
 845.485.3100  
[tom@crproperties.com](mailto:tom@crproperties.com)



TACONIC STATE PARKWAY - (6 MINUTES / 3.5 MILES)  
 INTERSTATE 84 - (10 MINUTES / 6.5 MILES)

SHOPPING | EATERIES | EVENTS | COMMUNITY HAPPENINGS



CR Properties Group, LLC  
 295 Main Street  
 Poughkeepsie, NY 12601  
[www.crproperties.com](http://www.crproperties.com)



ALL DATA BELIEVED TO BE ACCURATE BUT NOT WARRANTED

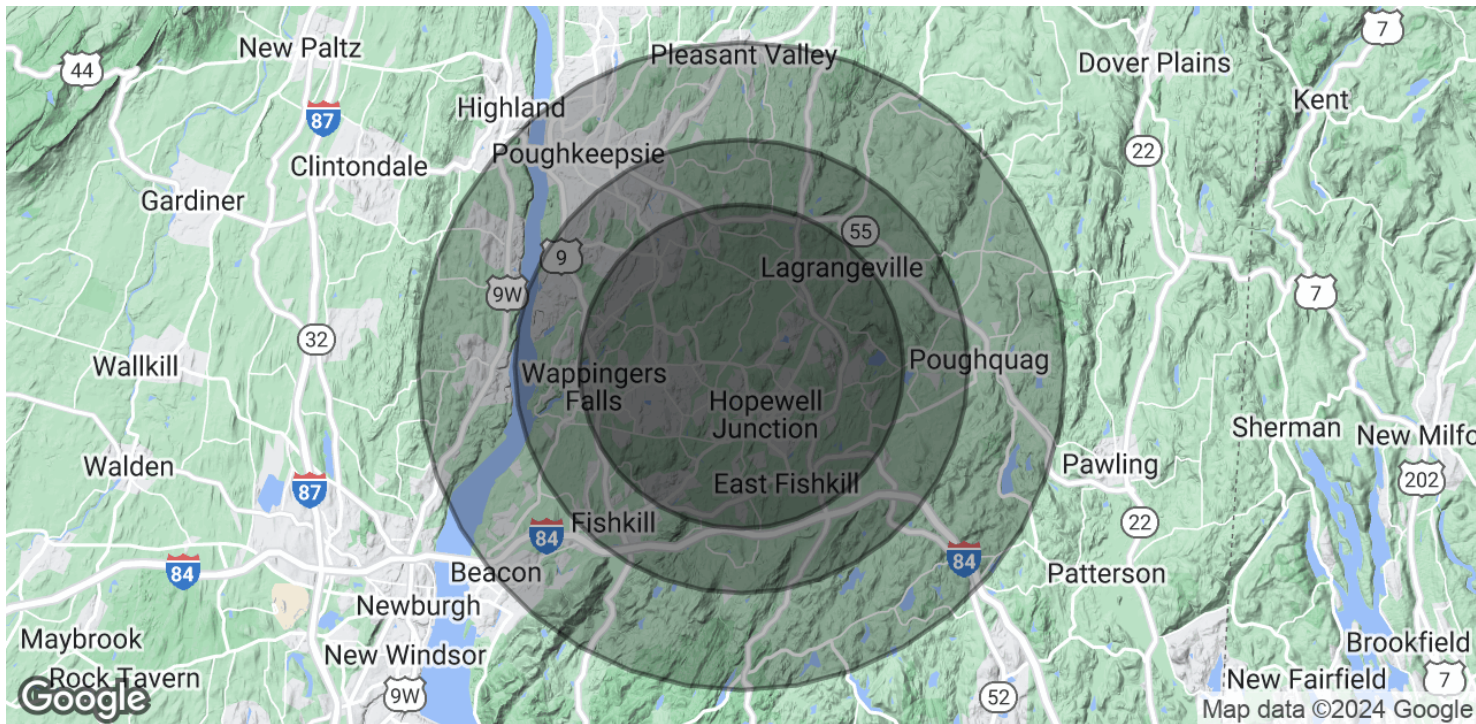
For more information:  
 Thomas M. Cervone  
 845.485.3100  
[tom@crproperties.com](mailto:tom@crproperties.com)



# DEMOGRAPHICS & STATISTICS

## POPULATION, HOUSEHOLD & INCOME

### MID-HUDSON VALLEY REGION



#### POPULATION

	5 MILES	7 MILES	10 MILES
Total Population	62,972	110,989	209,172
Average Age	45.2	44.3	42.6
Average Age (Male)	43.6	42.9	41.6
Average Age (Female)	46.3	45.0	43.0

#### HOUSEHOLDS & INCOME

	5 MILES	7 MILES	10 MILES
Total Households	23,739	41,641	83,312
# of Persons per HH	2.7	2.7	2.5
Average HH Income	\$118,879	\$115,951	\$103,567
Average House Value	\$335,961	\$315,319	\$279,160

2020 American Community Survey (ACS)



CR Properties Group, LLC  
295 Main Street  
Poughkeepsie, NY 12601  
[www.crproperties.com](http://www.crproperties.com)



ALL DATA BELIEVED TO BE ACCURATE BUT NOT WARRANTED

For more information:

Thomas M. Cervone  
845.485.3100  
[tom@crproperties.com](mailto:tom@crproperties.com)