

FOR SALE - BEAUTIFULLY FINISHED LAW FIRM BUILDING

926 CHERRY STREET

KANSAS CITY, MO 64106



- **7,500 SF fully renovated law firm building** in the heart of Downtown Kansas City's government district
- **Prime courthouse proximity:** 1 1/2 blocks to the U.S. Federal Courthouse and 3 blocks to the Jackson County Courthouse
- **Modern upgrades throughout**, including contemporary finishes and energy-efficient building systems
- **On-site surface parking** offering convenience for staff and clients
- **Rooftop solar power panels** providing sustainable energy and reduced operating costs
- **Excellent signage opportunity**
- **Adjacent to JE Dunn's headquarters**, surrounded by major civic, legal and business institutions
- **Garage door for deliveries**
- **Purchase Price: \$1,600,000**



Chuck Connealy, SIOR, CCIM

Direct: 913.789.9020

Cell: 913.515.6616

Chuck.Connealy@waterfordproperty.net



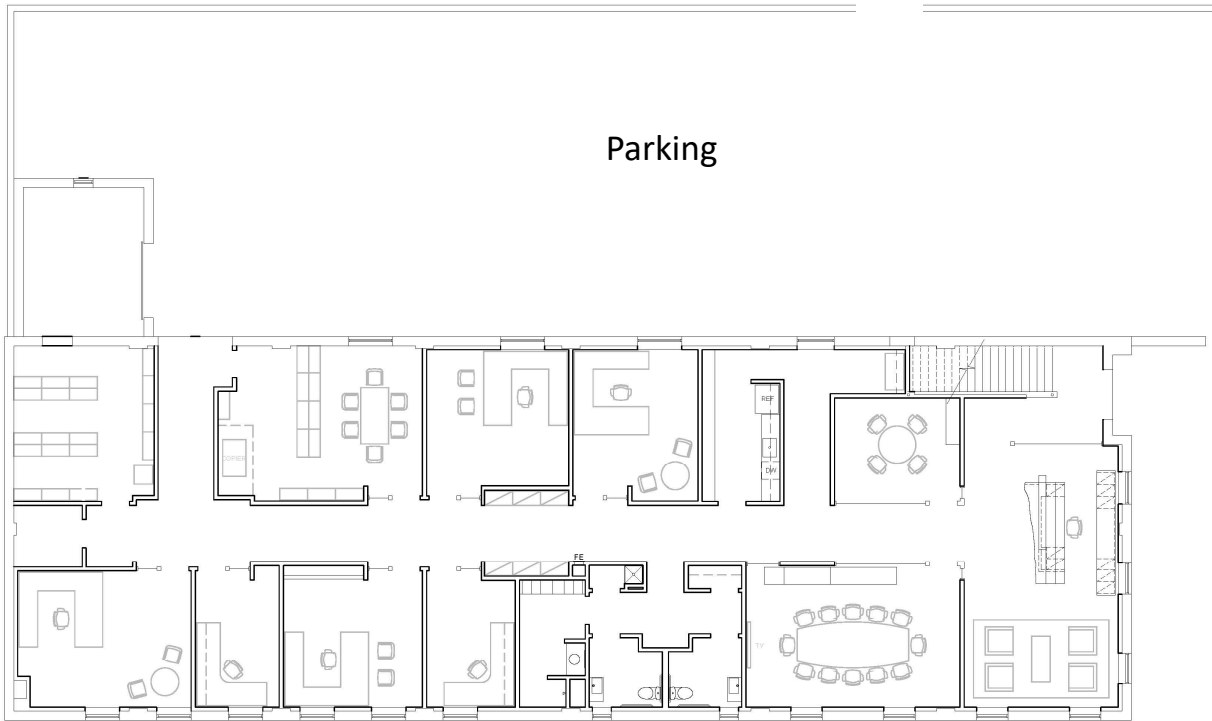
Joe O'Connor

Cell: 816.308.0350

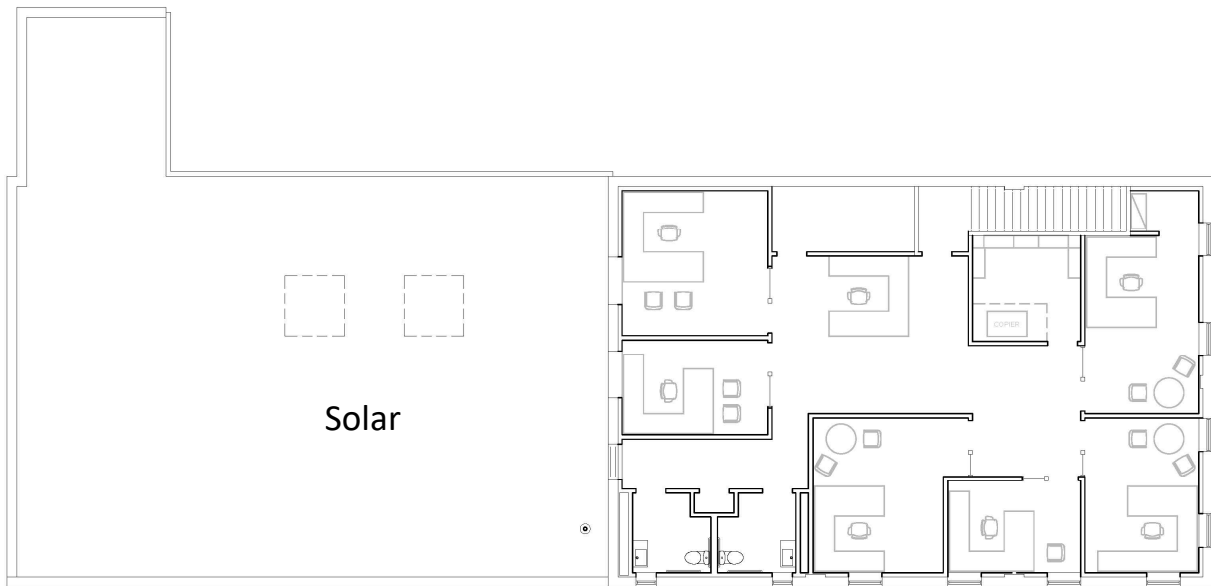
Joe.OConnor@waterfordproperty.net

FLOOR PLAN

1st Floor



2nd Floor



926 CHERRY STREET
KANSAS CITY, MO 64106



Chuck Connealy, SIOR, CCIM

Direct: (913) 789-9020

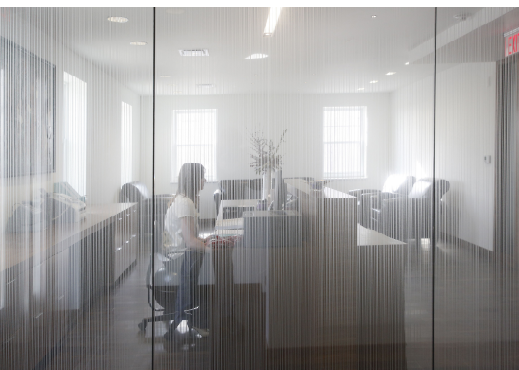
Cell: (913) 515-6616

Chuck.Connealy@waterfordproperty.net

Joe O'Connor

Cell: (816) 308-0350

Joe.Oconnor@waterfordproperty.net



926 CHERRY STREET
KANSAS CITY, MO 64106



Chuck Connealy, SIOR, CCIM
Direct: (913) 789-9020
Cell: (913) 515-6616
Chuck.Connealy@waterfordproperty.net

Joe O'Connor
Cell: (816) 308-0350
Joe.Oconnor@waterfordproperty.net

Information furnished regarding property is from sources deemed reliable but no warranty or representation is made as to the accuracy thereof and same is submitted subject to errors, omissions, prior sale or lease or withdrawal, without notice.