

**AVISON
YOUNG**

#303-350 EAST ESPLANADE NORTH VANCOUVER, BC

FOR SALE

Well improved, loft style office in the heart of the Shipyards District with unobstructed views



Ian Whitchelo*, Principal
604 647 5095
ian.whitchelo@avisonyoung.com
**Ian Whitchelo Personal Real Estate Corporation*

Terry Thies*, Principal
604 646 8398
terry.thies@avisonyoung.com
**Terry Thies Personal Real Estate Corp.*

Rory Thies, Sales Assistant
604 243 9591
rory.thies@avisonyoung.com

Opportunity

Premium strata office unit for sale at 350 East Esplanade. Unit #303 offers a unique opportunity to own a well-appointed office unit in one of North Vancouver's most sought-after commercial corridors. This two-level, professionally finished loft-style workspace provides modern design, offering an ideal environment for users seeking a distinctive and inspiring office setting. The suite features an impressive private rooftop patio providing an exclusive outdoor area, and floor-to-ceiling windows with unobstructed views of the Vancouver Harbour and flooding the space with natural light.

Location

Situated in the heart of the Shipyards Brewery District in Lower Lonsdale, 350 East Esplanade is positioned within one of North Vancouver's most active and rapidly evolving commercial hubs. The location provides excellent connectivity, just steps from Lonsdale Quay and minutes to Downtown Vancouver via the Seabus, making it highly accessible for employees, clients, and partners.

Property details

	Unit 303
AVAILABLE AREA	1,856 square feet
PID	030-402-590
PROPERTY TAX (2025)	\$21,695.57
MONTHLY STRATA FEES (2025)	\$827.84



SALE PRICE
\$2,199,000



PARKING
Three (3) reserved stalls



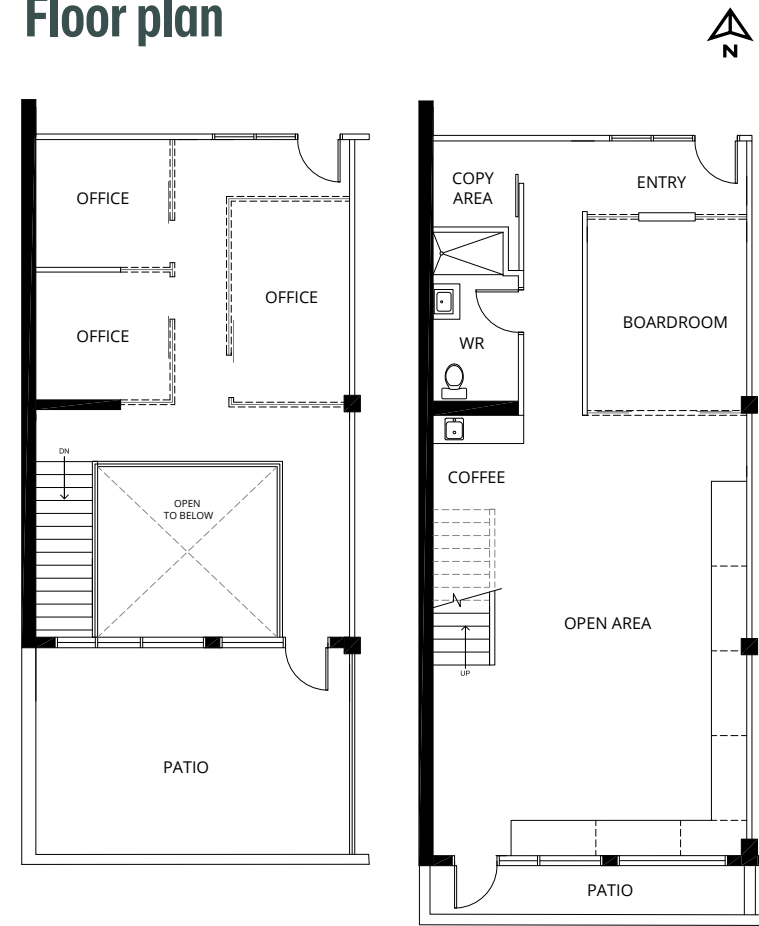
AVAILABILITY
30 days notice



ZONING
M-4 industrial zone



Floor plan



EAST ESPLANADE

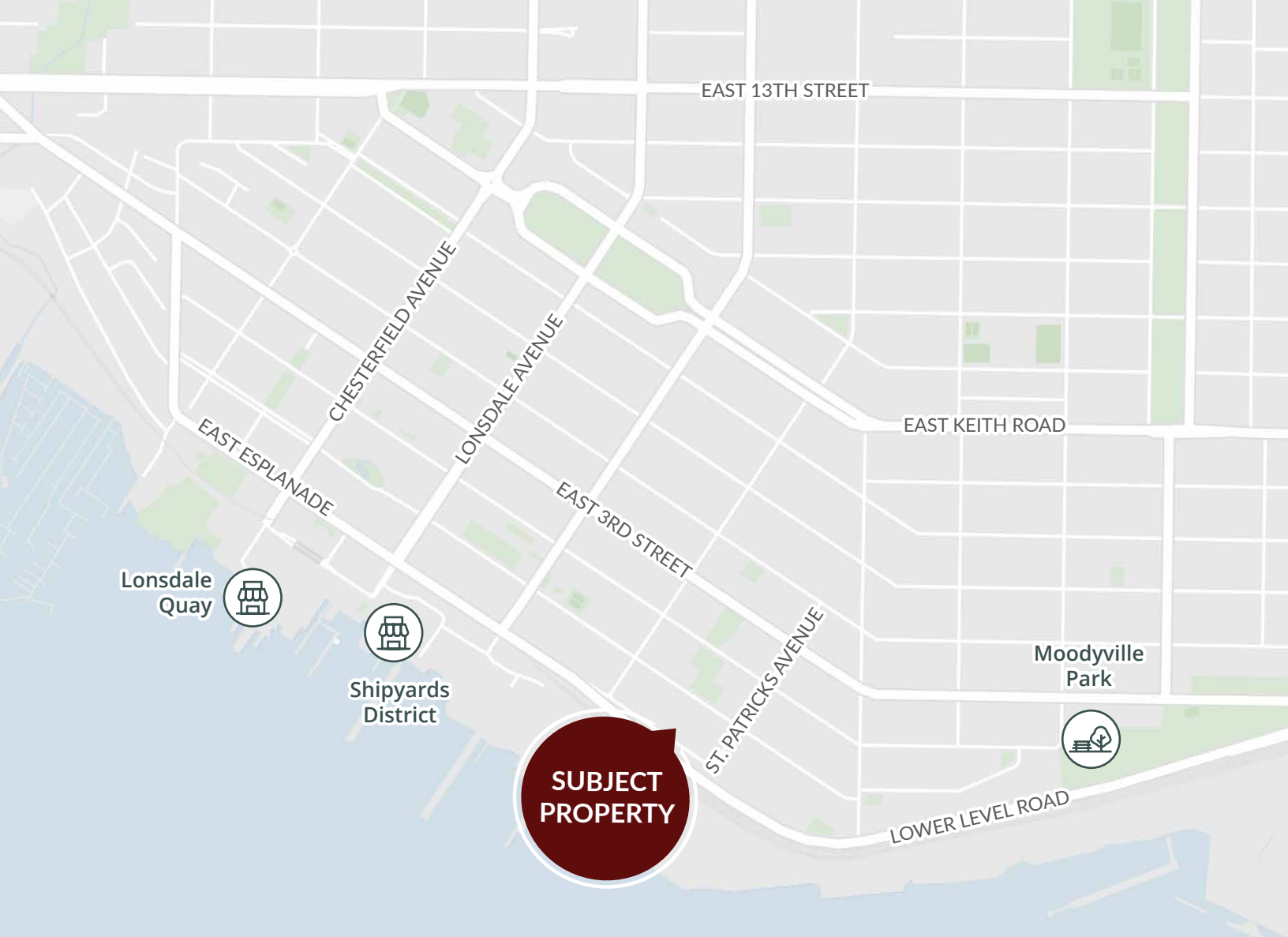
Property highlights

- Open plan office and showroom area
- Two levels with large rooftop patio
- Abundant natural light with floor to ceiling windows
- Unobstructed views overlooking the Vancouver Harbour
- Air conditioned office

Area highlights

- Direct access to public transit via the Lonsdale Quay bus loop and SeaBus terminal
- Abundant street parking in the immediate area
- Several restaurants, shops, and cafes in the immediate area





Downtown
Vancouver
12
MINUTE
SEABUS RIDE

Lonsdale
Quay
10
MINUTE
WALK

Highway
1
8
MINUTE
DRIVE

Contact for more information

Ian Whitchelo*, Principal
604 647 5095
ian.whitchelo@avisonyoung.com
**Ian Whitchelo Personal Real Estate Corporation*

Terry Thies*, Principal
604 646 8398
terry.thies@avisonyoung.com
**Terry Thies Personal Real Estate Corp.*

Rory Thies, Sales Assistant
604 243 9591
rory.thies@avisonyoung.com

#2900-1055 West Georgia Street
P.O. Box 11109 Royal Centre
Vancouver, BC V6E 3P3, Canada

avisonyoung.ca

© 2025 Avison Young. Information contained herein was obtained from sources deemed reliable and, while thought to be correct, have not been verified. Avison Young does not guarantee the accuracy or completeness of the information presented, nor assumes any responsibility or liability for any errors or omissions therein.

