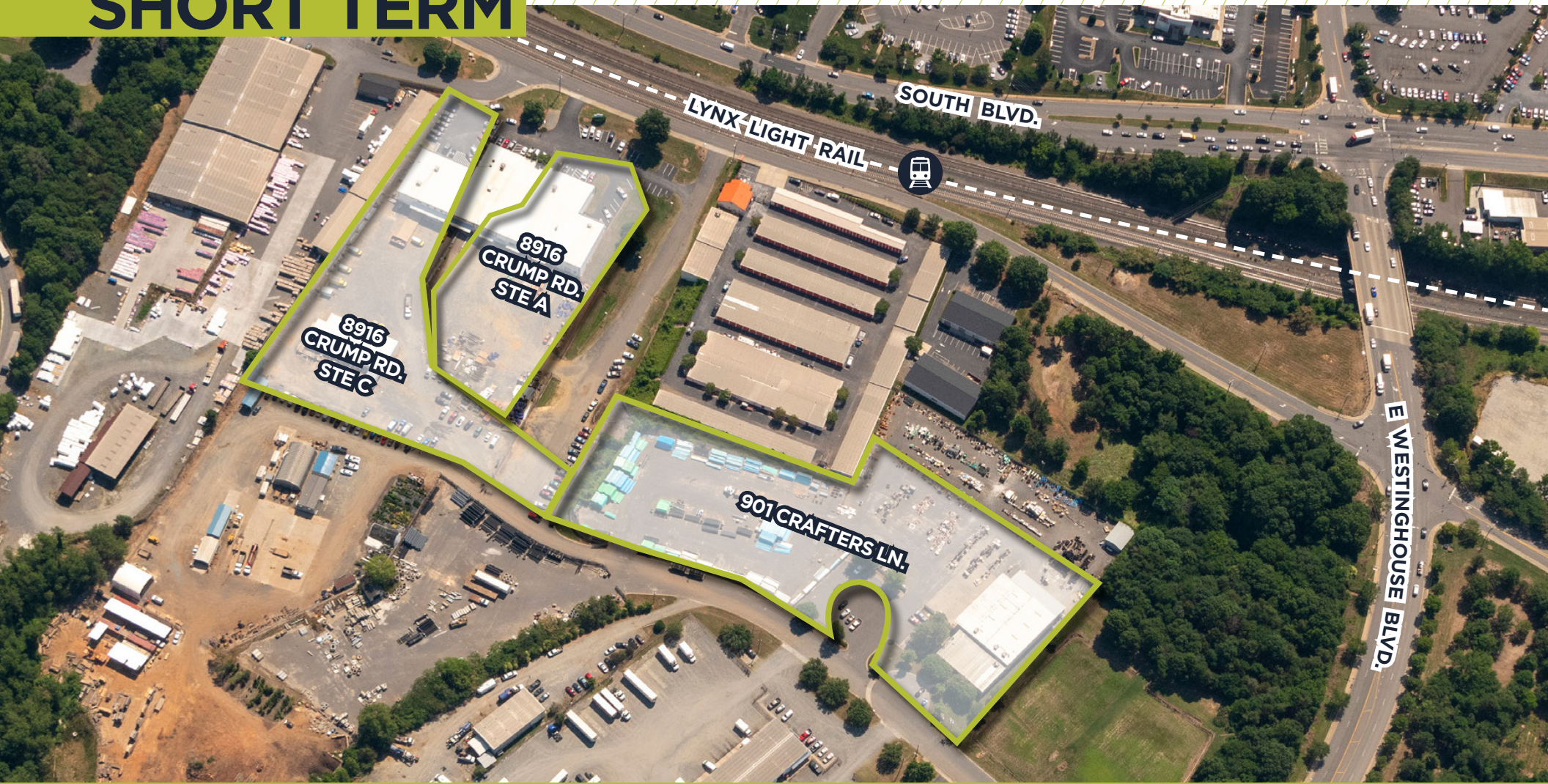


FOR LEASE SHORT TERM



901 CRAFTERS LN. | 8916 CRUMP RD. STE A | 8916 CRUMP RD. STE C
PINEVILLE, NC 28134

PROPERTY HIGHLIGHTS

901 CRAFTERS LN.

PINEVILLE, NC 28134

Property Size: 15,000 SF

Outdoor Storage: 3 AC (Gated and Secured)

Office Area: ±6,000 SF

Building Specifications:

- 1 Grade Level Door
- 2 Dock High Doors
- Covered Loading



PROPERTY HIGHLIGHTS

8916 CRUMP RD. STE A

PINEVILLE, NC 28134

Property Size: 20,104 SF

Outdoor Storage: 1 AC (Gated and Secured)

Main Level: 10,487 SF Office

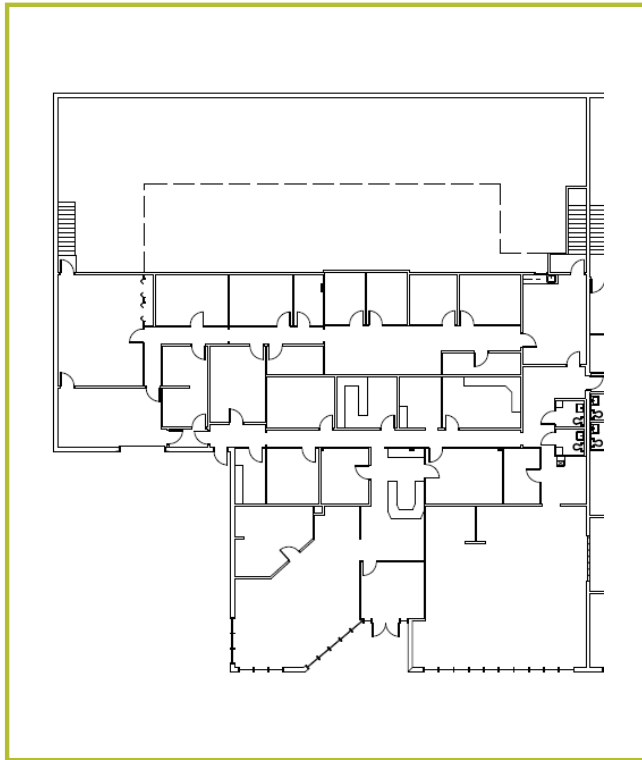
Lower Level: 9,617 SF Flex (830 SF Office)

Building Specifications:

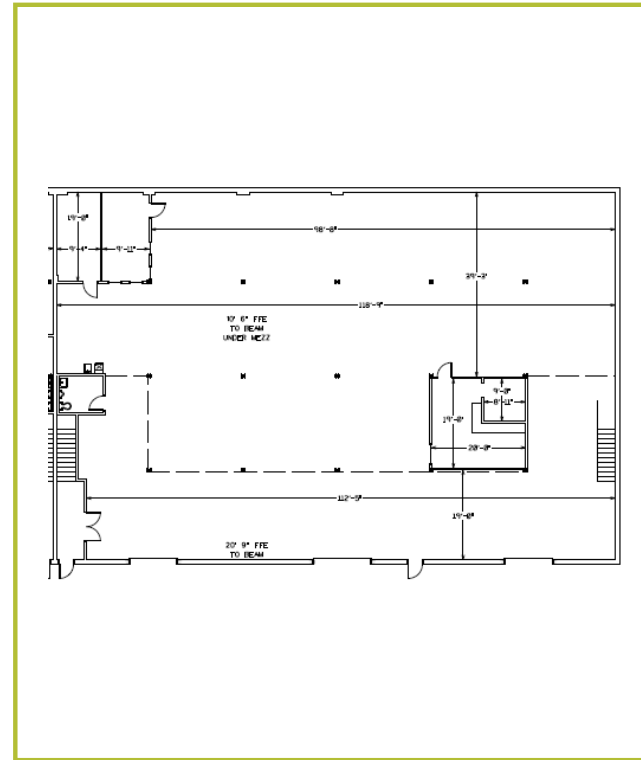
- 1 Dock High
- 3 Platform Dock High



FLOOR PLANS



SUITE A
10,487 SF



BAY C
9,617 SF
830 SF OFFICE

PROPERTY HIGHLIGHTS

8916

CRUMP RD. STE C

PINEVILLE, NC 28134

Property Size: 18,097 SF

Outdoor Storage: 1.25 AC (Secured)

12,840 SF FLEX SPACE

Main Level: 6,433 SF Office

Lower Level: 6,407 SF Flex (3,475 SF Office)

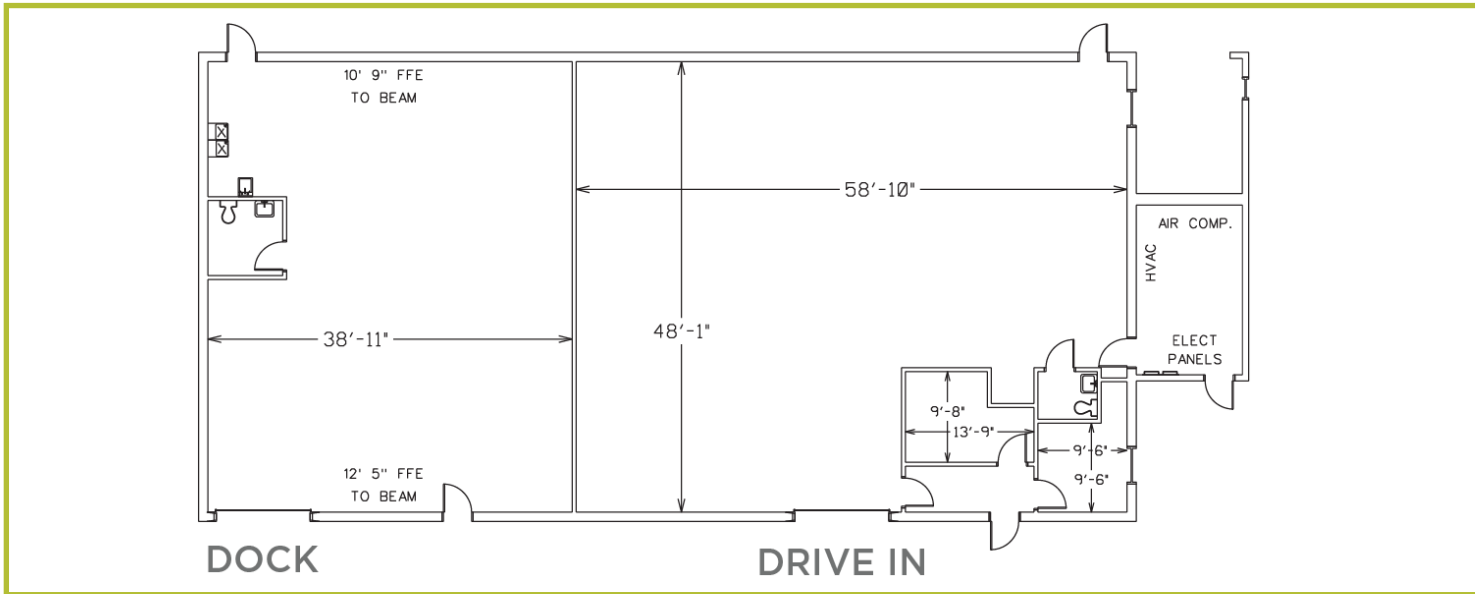
- Building Specifications:
- 1 Dock High Door
 - 1 Platform Dock High Door

5,257 SF OUT BUILDING

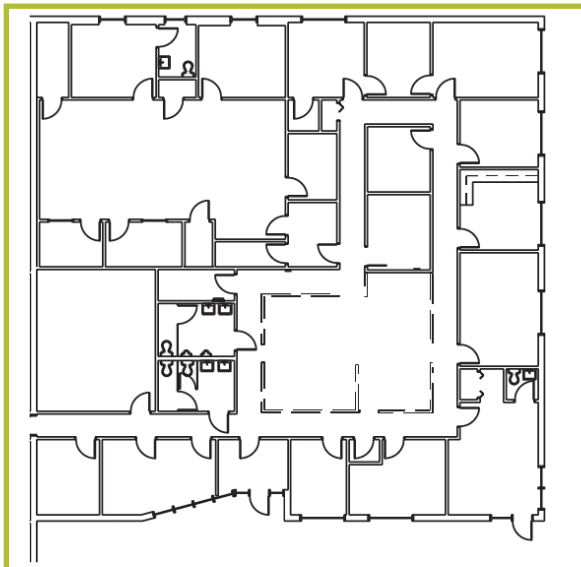
- Building Specifications:
- 1 Dock High Door
 - 1 Drive-In Door
 - 10'9" Clear Height



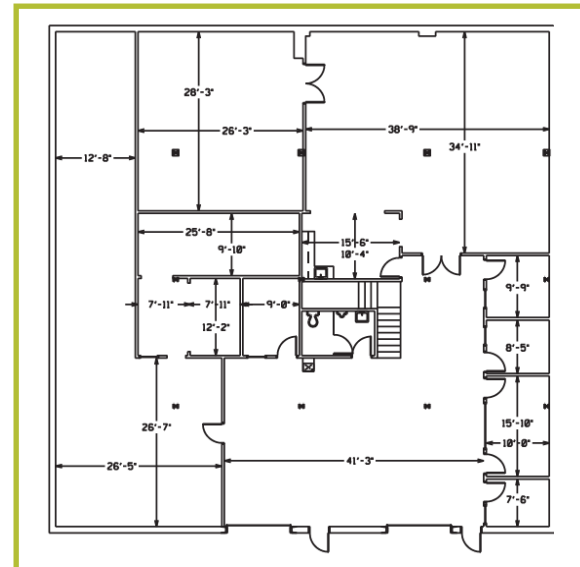
FLOOR PLANS



8916 CRUMP RD.
STE C
OUT BUILDING
5,257 SF



SUITE C
6,433 SF



BAY A
6,407 SF
3,475 SF OFFICE



Ballantyne
10 Minute Drive

LOWE'S

Atrium Health

Carolina Place Mall
H&M DICK'S
Dillard's belk
JCPenney BARNES & NOBLE BOOKSELLERS

EXIT 64

South Charlotte Auto Dealers
Mazda Mercedes-Benz CHEVROLET
CADILLAC DODGE RAM

Carolina Pavilion Mall
TARGET. ROSS DRESS FOR LESS BED BATH & BEYOND
DSW OLD NAVY
Chick-fil-A AutoZone FLOOR & DECOR

The Centrum
THE HOME DEPOT BEST BUY

EXIT 61

LYNX I-485

INTERSTATE 485

SITE

South Blvd.

Westinghouse Blvd



FRANCES CRISLER

Director
+1 704 620 6014
frances.crisler@cushwake.com

300 South Tryon Street, Suite 1110
Charlotte, NC 28202
+1 704 375 7771

cushmanwakefield.com

©2026 Cushman & Wakefield. All rights reserved. The information contained in this communication is strictly confidential. This information has been obtained from sources believed to be reliable but has not been verified. NO WARRANTY OR REPRESENTATION, EXPRESS OR IMPLIED, IS MADE AS TO THE CONDITION OF THE PROPERTY (OR PROPERTIES) REFERENCED HEREIN OR AS TO THE ACCURACY OR COMPLETENESS OF THE INFORMATION CONTAINED HEREIN, AND SAME IS SUBMITTED SUBJECT TO ERRORS, OMISSIONS, CHANGE OF PRICE, RENTAL OR OTHER CONDITIONS, WITHDRAWAL WITHOUT NOTICE, AND TO ANY SPECIAL LISTING CONDITIONS IMPOSED BY THE PROPERTY OWNER(S). ANY PROJECTIONS, OPINIONS OR ESTIMATES ARE SUBJECT TO UNCERTAINTY AND DO NOT SIGNIFY CURRENT OR FUTURE PROPERTY PERFORMANCE.