

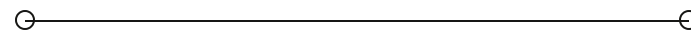


**LEASE**

# Outdoor Storage Space

**4022 PRAIRIE CROSSING DR**

Celina, TX 75009



**PRESENTED BY:**

**NATHAN TUNE**

O: 940.381.2220

nathan.tune@svn.com

**KRIS SMITH**

O: 940.381.2220

kris.smith@svn.com



## PROPERTY SUMMARY



### OFFERING SUMMARY

LEASE RATE:	\$4,500.00 SF/Mo (Ground)
AVAILABLE SF:	1-6 Acres
LOT SIZE:	973,850 SF

**NATHAN TUNE**

O: 940.381.2220

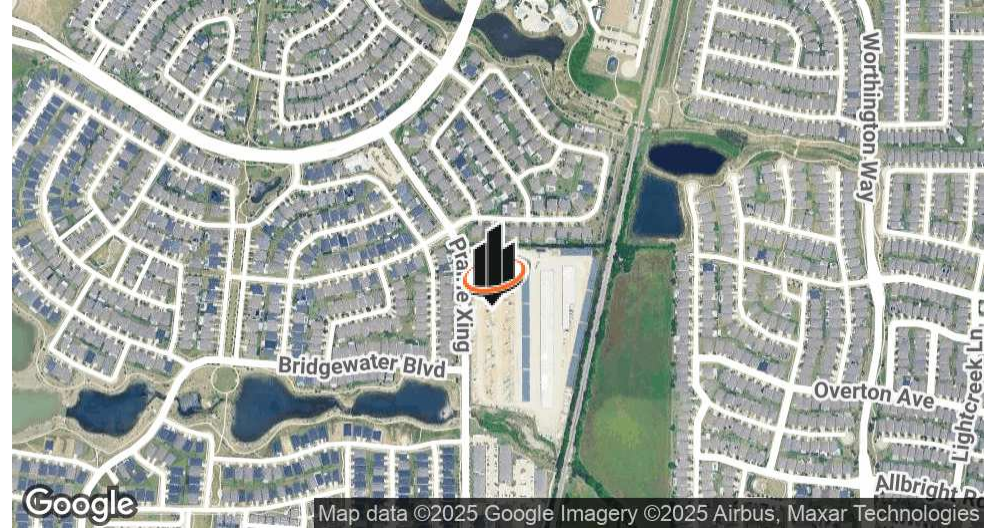
nathan.tune@svn.com

**KRIS SMITH**

O: 940.381.2220

kris.smith@svn.com

OUTDOOR STORAGE SPACE | 4022 Prairie Crossing Dr Celina, TX 75009



### LOCATION DESCRIPTION

Located within the rapidly growing Light Farms master-planned community, 4022 Prairie Crossing Dr offers a prime position in one of Celina's most active development zones. With convenient access to Preston Road and the Dallas North Tollway, the site ensures excellent regional connectivity to Prosper, Frisco, and McKinney. Surrounded by thriving residential neighborhoods, schools, and community amenities, this location is well-suited for commercial use and poised to benefit from the area's continued expansion.

### PROPERTY HIGHLIGHTS

- Fencing is possible
- Gated access control for entire site

SVN | VERUS COMMERCIAL

2



## ADDITIONAL AERIALS



**NATHAN TUNE**

O: 940.381.2220

nathan.tune@svn.com

**KRIS SMITH**

O: 940.381.2220

kris.smith@svn.com



## LEASE SPACES



**NATHAN TUNE**

O: 940.381.2220

nathan.tune@svn.com

**KRIS SMITH**

O: 940.381.2220

kris.smith@svn.com

# LEASE SPACES

## LEASE INFORMATION

LEASE TYPE:	Ground	LEASE TERM:	Negotiable
TOTAL SPACE:	6 Acres	LEASE RATE:	\$4,500.00 SF/mo

## AVAILABLE SPACES

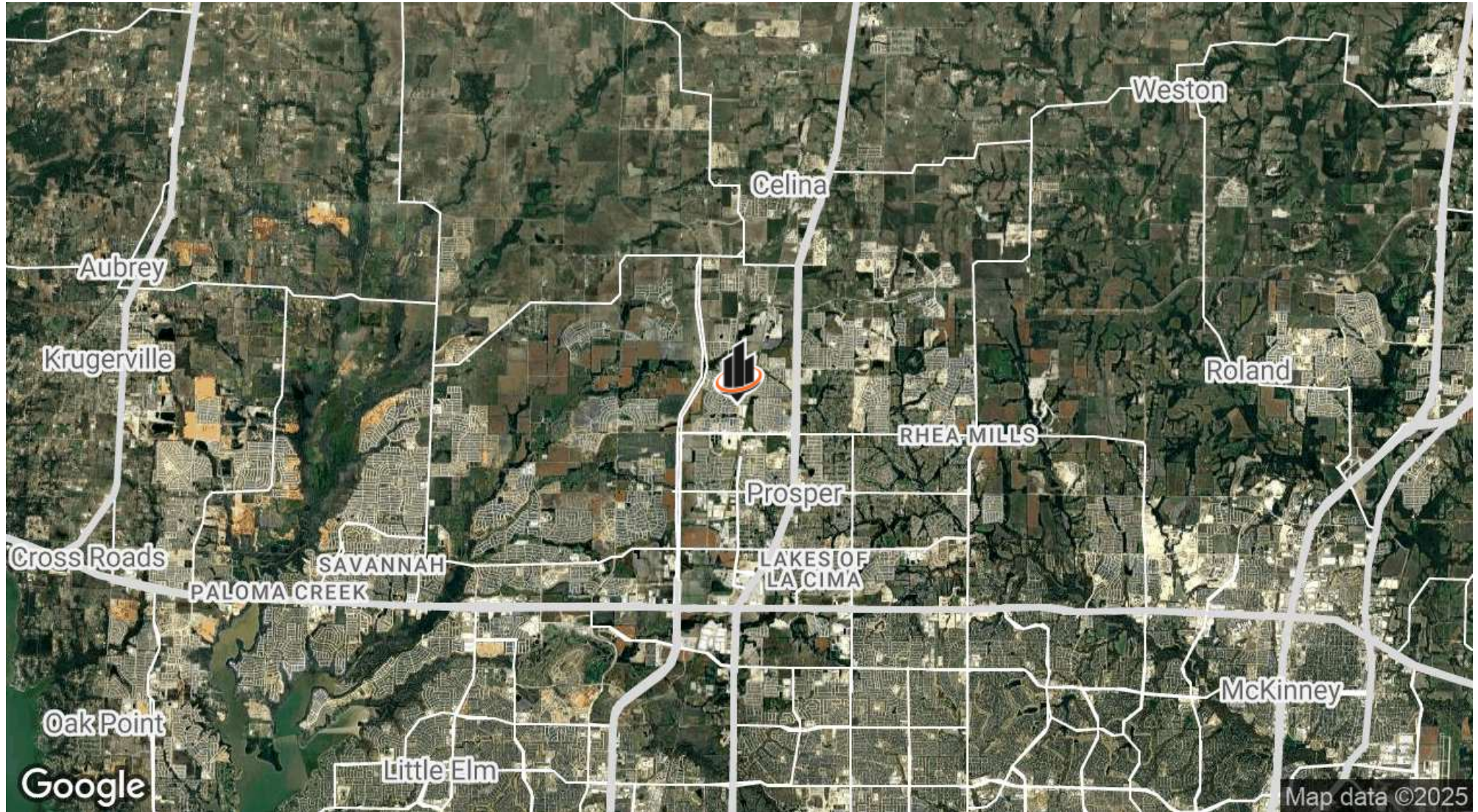
SUITE	TENANT	SIZE (SF)	LEASE TYPE	LEASE RATE
Lot 1	Available	1 Acres	Ground Lease	\$4,500 per month
Lot 2	Available	1 Acres	Ground Lease	\$4,500 per month
Lot 3	Available	1 Acres	Ground Lease	\$4,500 per month
Lot 4	Available	1 Acres	Ground Lease	\$4,500 per month
Lot 5	Available	1 Acres	Ground Lease	\$4,500 per month
Lot 6	Available	1 Acres	Ground Lease	\$4,500 per month

**NATHAN TUNE**  
O: 940.381.2220  
nathan.tune@svn.com

**KRIS SMITH**  
O: 940.381.2220  
kris.smith@svn.com



## LOCATION MAP



**NATHAN TUNE**

O: 940.381.2220

nathan.tune@svn.com

**KRIS SMITH**

O: 940.381.2220

kris.smith@svn.com



# DEMOGRAPHICS MAP & REPORT

POPULATION

1 MILE3 MILES5 MILES

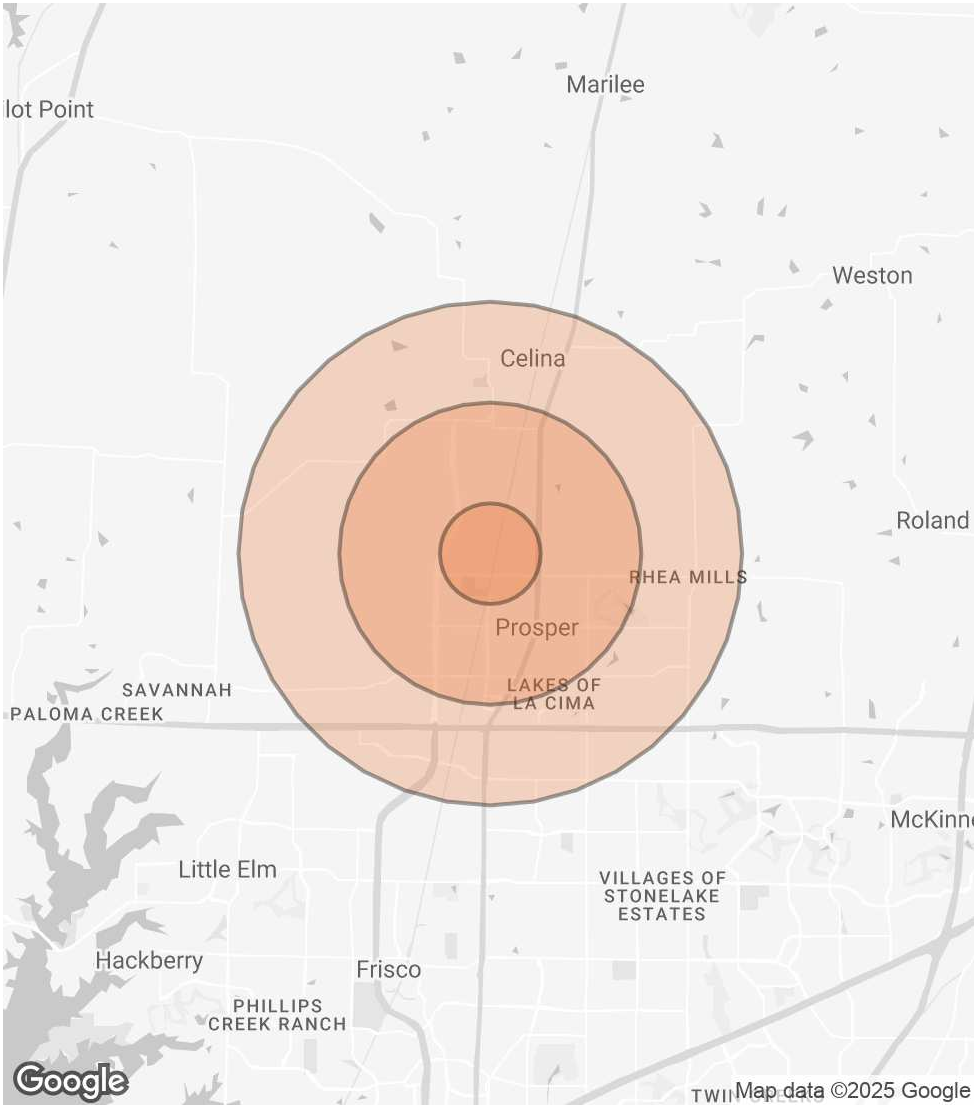
TOTAL POPULATION	8,673	36,720	81,849
AVERAGE AGE	31	34	34
AVERAGE AGE (MALE)	31	34	34
AVERAGE AGE (FEMALE)	32	35	34

HOUSEHOLDS & INCOME

1 MILE3 MILES5 MILES

TOTAL HOUSEHOLDS	2,459	10,717	24,334
# OF PERSONS PER HH	3.5	3.4	3.4
AVERAGE HH INCOME	\$222,273	\$209,022	\$202,006
AVERAGE HOUSE VALUE	\$626,469	\$669,573	\$657,957

Demographics data derived from AlphaMap



NATHAN TUNE

O: 940.381.2220

nathan.tune@svn.com

KRIS SMITH

O: 940.381.2220

kris.smith@svn.com

LISTING AGENTS



NATHAN TUNE

Senior Advisor

**Direct:** 940.381.2220 **Cell:** 214.578.3361  
nathan.tune@svn.com



KRIS SMITH

Advisor

**Direct:** 940.381.2220 **Cell:** 214.552.2413  
kris.smith@svn.com

<b>NATHAN TUNE</b>	<b>KRIS SMITH</b>
O: 940.381.2220	O: 940.381.2220
nathan.tune@svn.com	kris.smith@svn.com



