

3 ASPINWALL ROAD
34 RESIDENTIAL CONDOMINIUMS
UNDER CONSTRUCTION



SITE

20 DEDICATED
PARKING SPACES

ASPINWALL RD

WASHINGTON ST
14.541 ADT



SOUTHERN AVE



DORCHESTER, MA

569 WASHINGTON STREET

4,800 SF + DEDICATED PARKING LOT AVAILABLE NOW



PROJECT DETAILS

569 WASHINGTON ST • 4,800 SF + DEDICATED PARKING LOT | AVAILABLE NOW

AVAILABLE SPACE

Available space: 4,800 SF + Dedicated Parking Lot (0.14 Acres)

PROPERTY HIGHLIGHTS

- Former bank branch with dedicated parking
- Located on the corner of Washington Street and Aspinwall Rd
- Basement space available
- Available Now

MARKET

Dorchester Center

NEIGHBORING RETAIL

Walgreens, Rockland Trust, Bank of America, America's Food Basket, CVS, Daily Table, KFC

2024 DEMOGRAPHICS	0.5 MILES	1 MILE	1.5 MILES
TOTAL POPULATION	14,710	63,224	109,618
TOTAL HOUSEHOLDS	5,132	22,293	40,118
MEDIAN HH INCOME	\$74,311	\$68,947	\$69,099

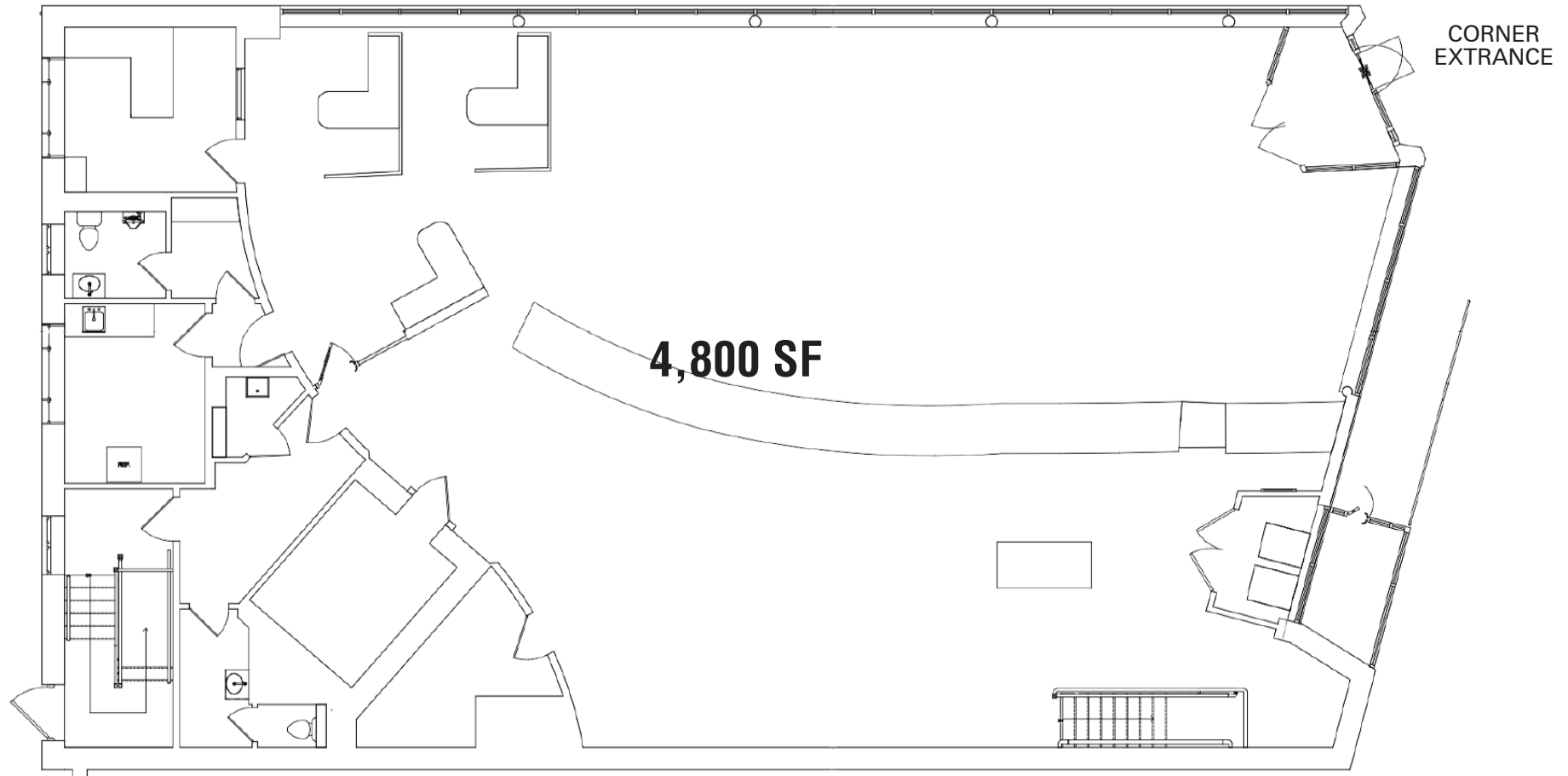


FLOOR
PLAN

569 WASHINGTON ST • 4,800 SF + DEDICATED PARKING LOT | AVAILABLE NOW

FIRST FLOOR

ASPINWALL RD



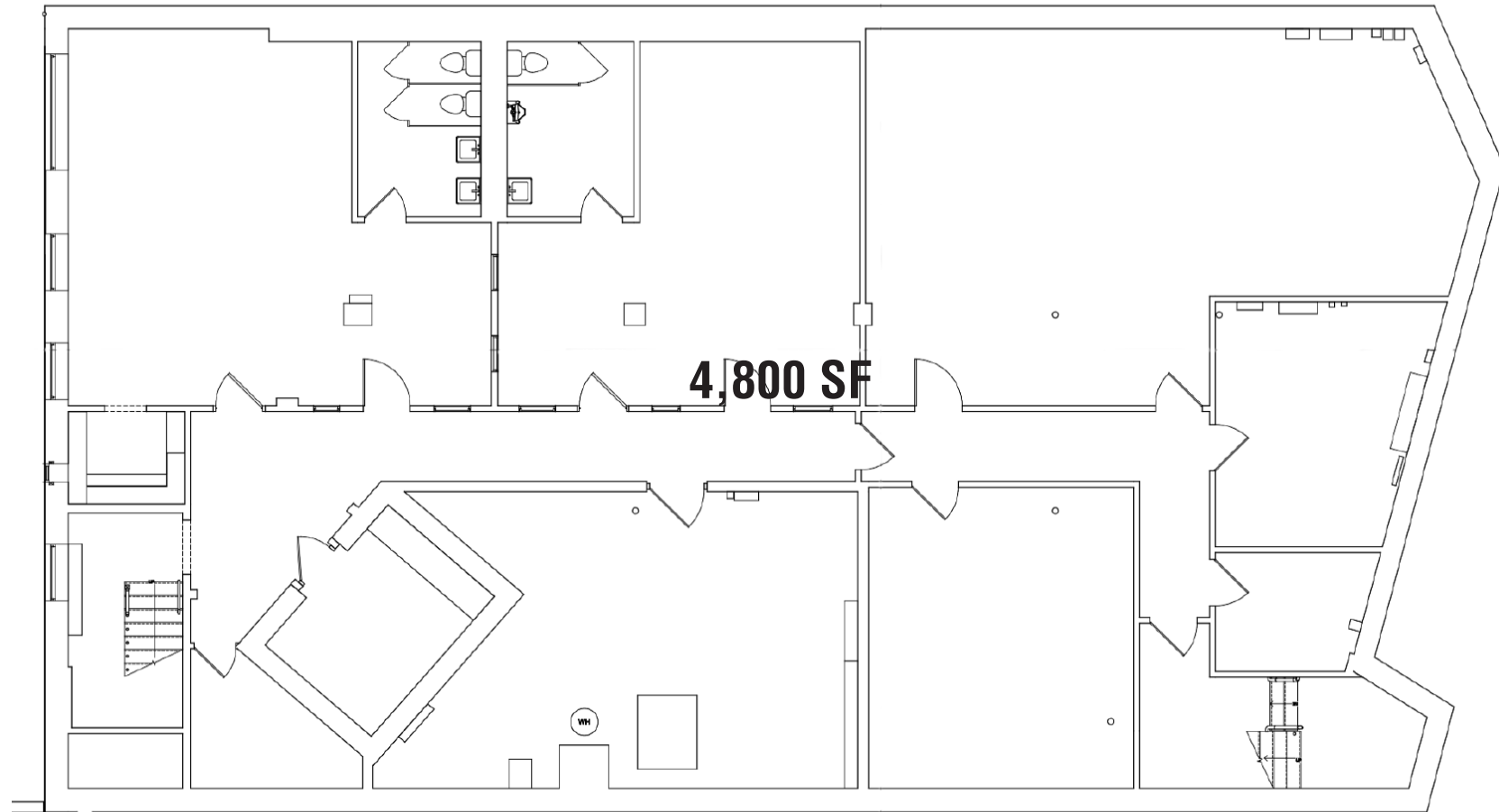
WASHINGTON STREET

FLOOR
PLAN

569 WASHINGTON ST • 4,800 SF + DEDICATED PARKING LOT | AVAILABLE NOW

BASEMENT FLOOR

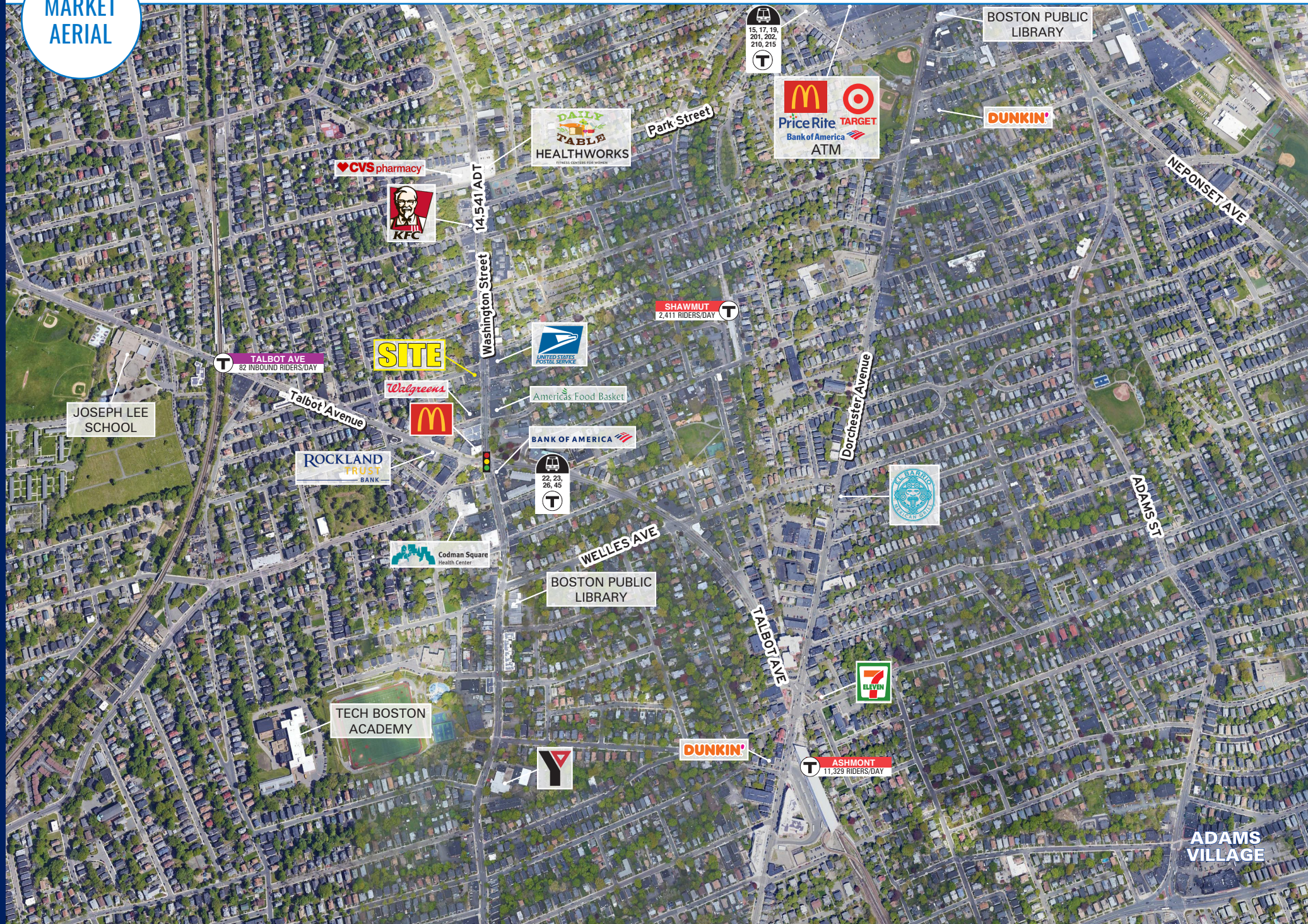
ASPINWALL RD

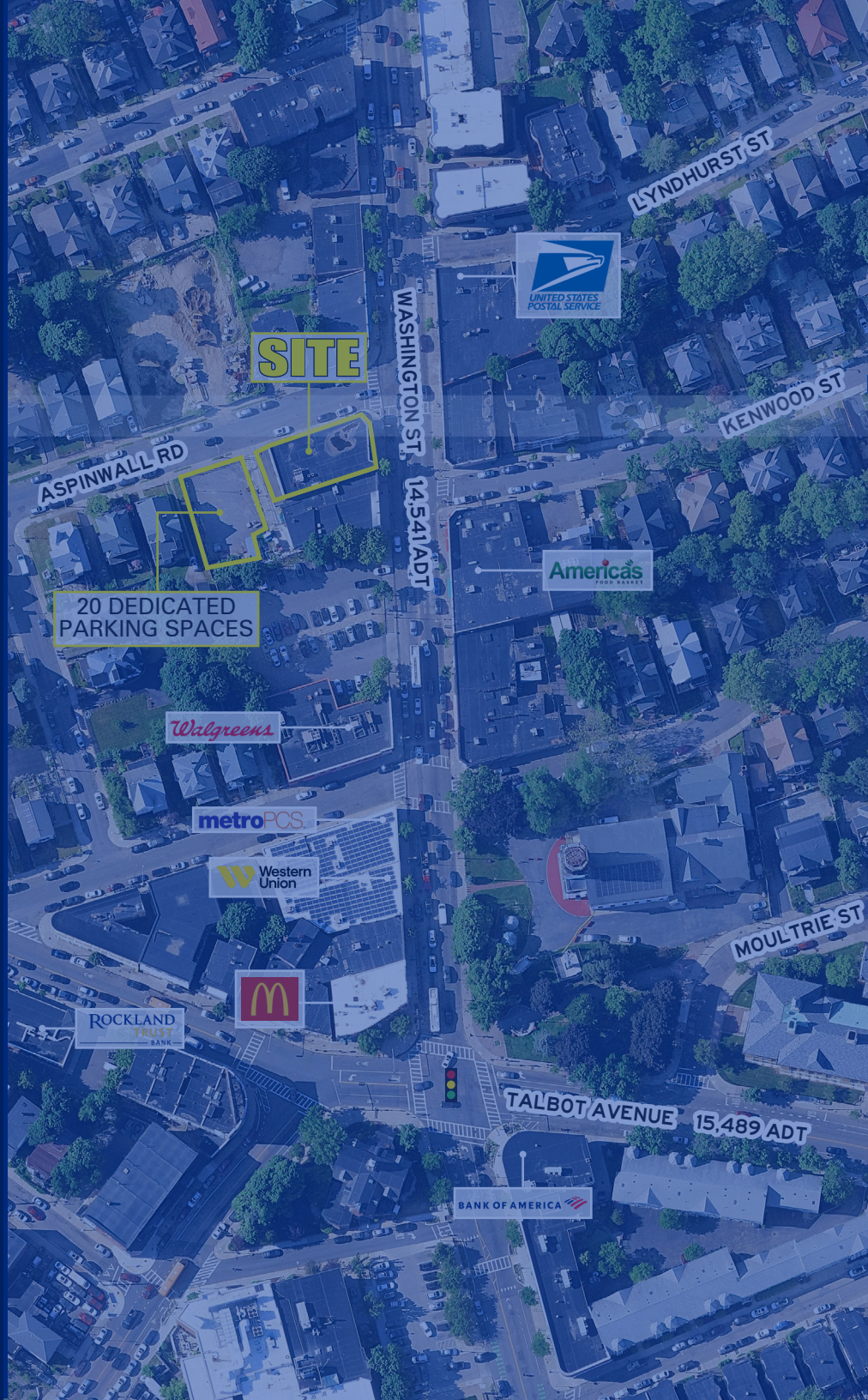


WASHINGTON STREET

MARKET AERIAL

569 WASHINGTON ST • 4,800 SF + DEDICATED PARKING LOT | AVAILABLE NOW





DORCHESTER, MA

569 WASHINGTON ST

4,800 SF + DEDICATED PARKING LOT | AVAILABLE NOW

ANDREW JACOB

617.369.5919
AJACOB@ATLANTICRETAIL.COM

SOPHIE MORRILL

617.369.5926
SMORRILL@ATLANTICRETAIL.COM

LINDSEY SANDELL

617.369.5936
LSANDELL@ATLANTICRETAIL.COM



ALBANY

ATLANTA

BOSTON

THE PRUDENTIAL CENTER
BOSTON, MA 02199
617.239.3600

CHARLOTTE

LOS ANGELES

NEW YORK CITY

ORLANDO

PITTSBURGH

WWW.ATLANTICRETAIL.COM

LINKEDIN.COM/COMPANY/ATLANTIC-RETAIL-PROPERTIES
 INSTAGRAM.COM/ATLANTIC_RETAIL/

CHAINLINKS
RETAIL ADVISORS