



EXR

Retail Space for Lease

**137 Frost St
Brooklyn NY 11211**

exrny.com



137 Frost St, Brooklyn NY 11211



Location

Manhattan Ave and Graham Ave

Space

Ground Level

Ceiling Height

11 ft

Available Spaces

1000 SQFT

Frontage

13 ft

Zoning

M1-2/R6, MX-8

Occupancy

Vacant

Asking Price

\$10,000 / Month

Property Type

Retail

Description

Gorgeous Fresh White Box Space in Prime Williamsburg!

All uses considered.

High Ceilings

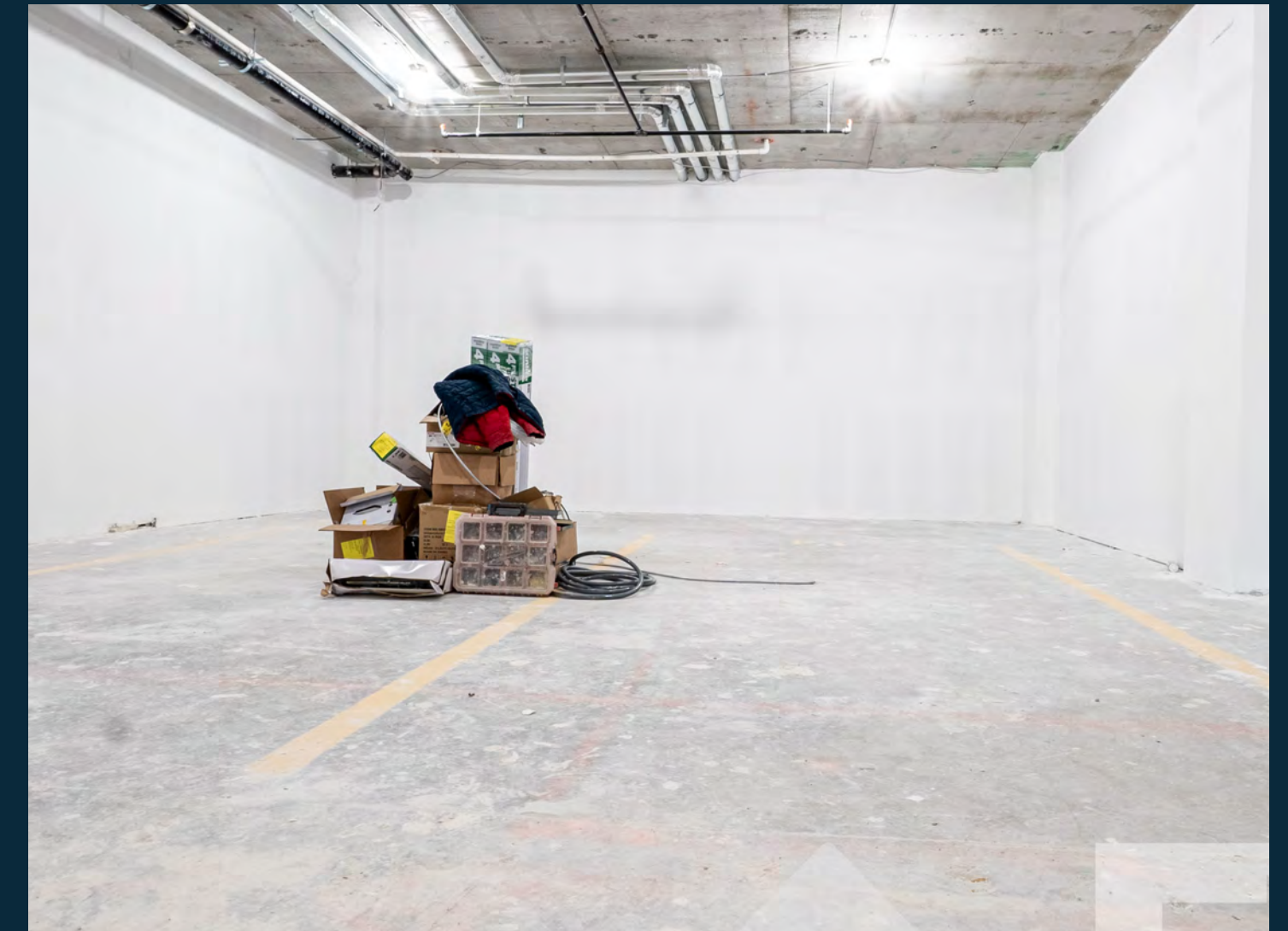
13 Ft of Frontage

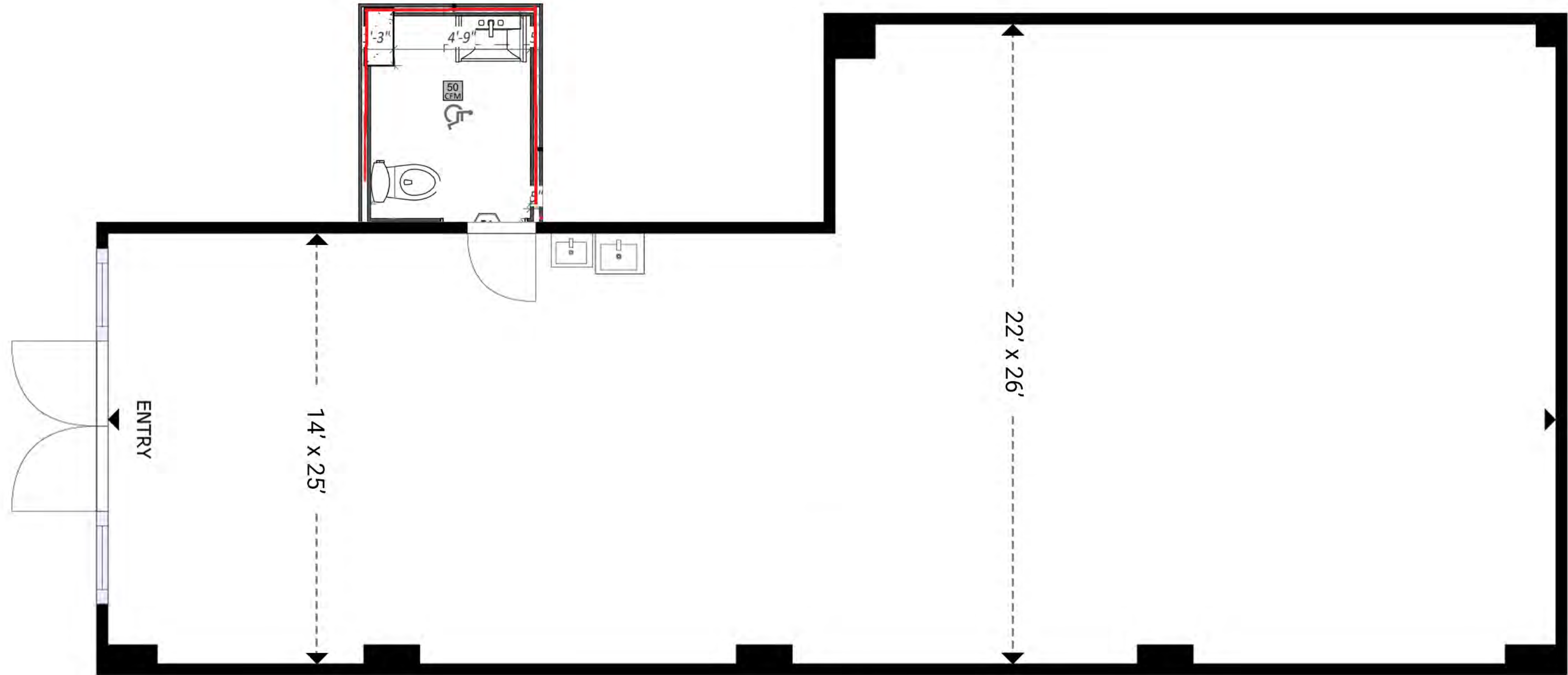
1000 Square Ft

Floor To Ceiling Glass Windows and Doors

New Development







FLOOR PLAN

GROSS INTERNAL AREA
FLOOR PLAN: 986 sq. ft

SIZES AND DIMENSIONS ARE APPROXIMATE, ACTUAL MAY VARY.



Demographics & Transportation



1 Mi

Population (2023)

140,872

2028 Population Projection

148,922

Average Age

40.50

Average HH Income

\$160,134

Population Growth '11-'23

+2.25%

Population Growth '23-'28

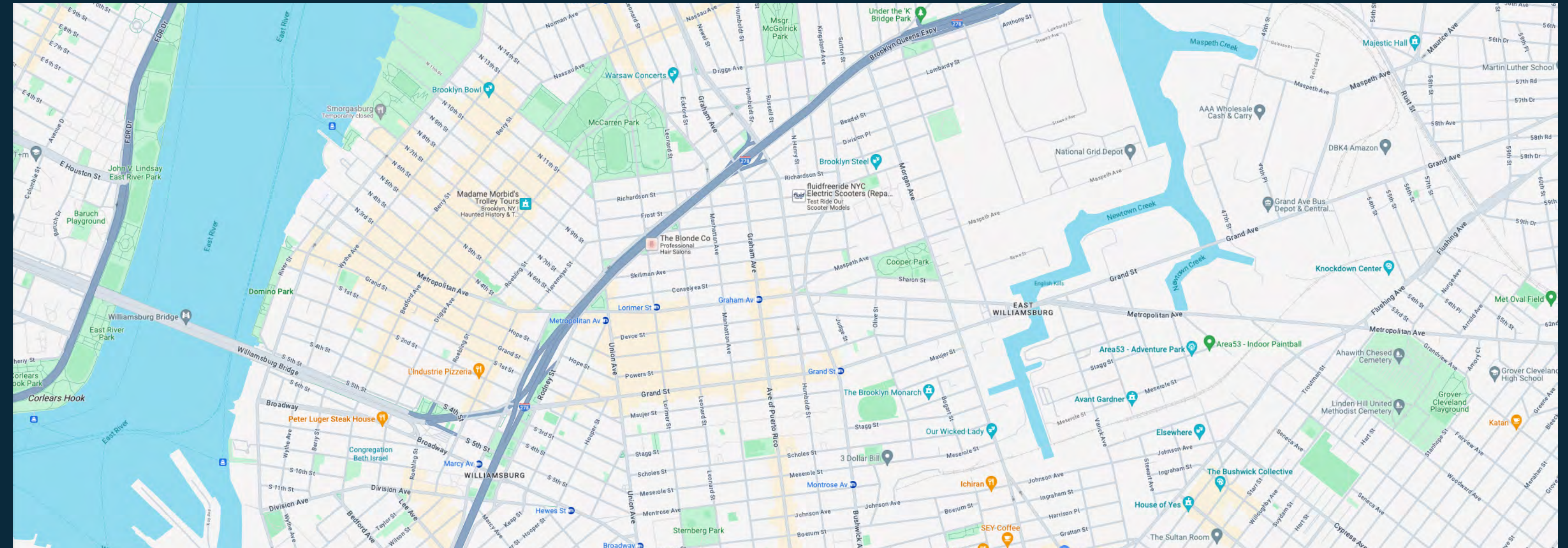
+5.71%

Total Business

5,143

Annual Spending

\$1,684,345,467



Transit / Subway

Drive

Walk

Distance

Graham Avenue Transit Stop (L)

1 min

6 min

0.3 mi

Lorimer Street (L Line) Transit Stop

2 min

7 min

0.4 mi

Metropolitan Avenue Transit Stop (G)

2 min

10 min

0.5 mi

Nassau Avenue Transit Stop (G)

2 min

10 min

0.6 mi

Grand Street (L Line) Transit Stop

2 min

12 min

0.6 mi

Neighboring Tenants Map



Thank You

CONTACT US



DAVID KORN
347.742.5480
DK@EXRNY.COM

ELI DEITSCH
917.863.3072
EDEITSCH@EXRNY.COM

EXRNY.COM

Licensed Real Estate Broker
License # 10491204340

Headquarters

1217 Bedford Avenue
Suite 204
Brooklyn, NY 11216

