

RETAIL PROPERTY FOR SALE & LEASE

10,347 SF

8130 Roosevelt Boulevard
Philadelphia, PA 19152



PROPERTY DETAILS

PROPERTY SIZE

- 10,347 SF on .88 Acres

DRIVE-IN

- One (1) Drive-In

DRIVE-THRU

- One (1) Drive-Thru

CEILING HEIGHT

- 16'8" - 18' clear

ZONING

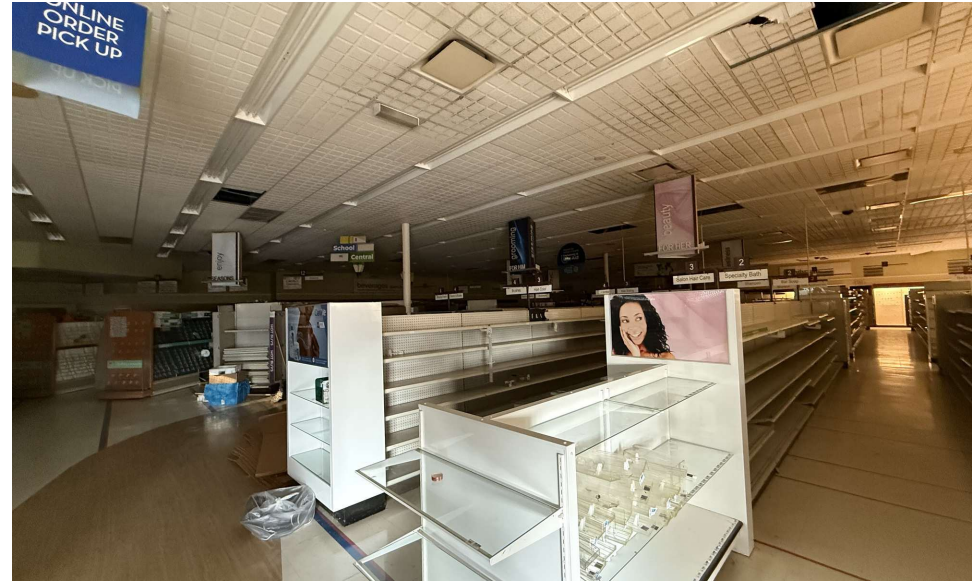
- CMX-1 (Neighborhood Commercial Mixed-Use-1)

LOCATION

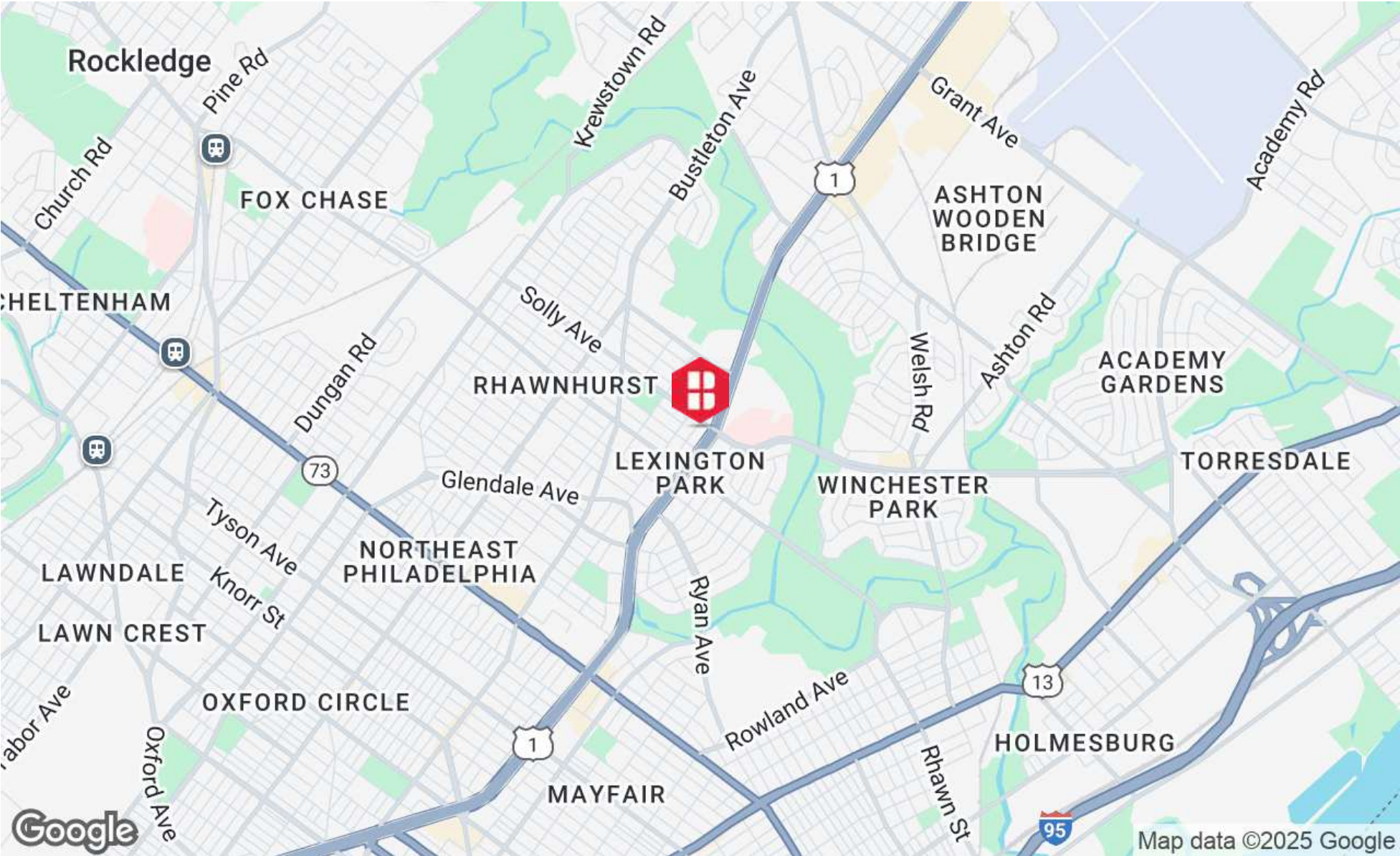
- This property is located directly on Roosevelt Blvd at the corner of a signalized intersection



ADDITIONAL PHOTOS



LOCATION MAP

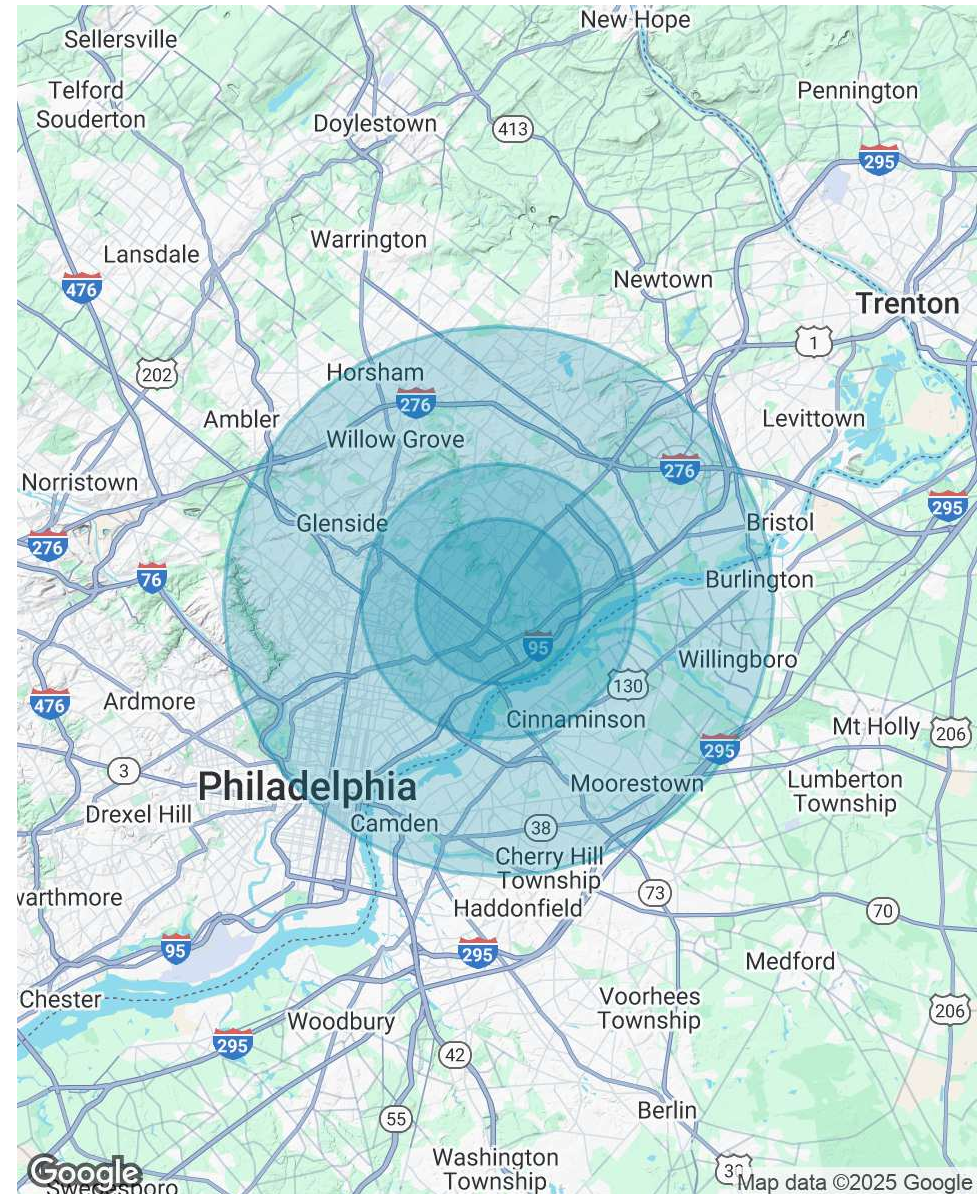


DEMOGRAPHICS MAP & REPORT

POPULATION	3 MILES	5 MILES	10 MILES
Total Population	287,102	555,604	1,720,555
Average Age	40	40	40
Average Age (Male)	38	39	39
Average Age (Female)	41	41	41

HOUSEHOLDS & INCOME	3 MILES	5 MILES	10 MILES
Total Households	104,783	204,912	673,380
# of Persons per HH	2.7	2.7	2.6
Average HH Income	\$83,567	\$87,305	\$95,571
Average House Value	\$251,077	\$259,925	\$310,840

Demographics data derived from AlphaMap





BINSWANGER
UNIQUELY SPECIALIZED SINCE 1931

Three Logan Square
1717 Arch Street, Suite 5100
Philadelphia, PA 19103
<https://www.binswanger.com>

PRIMARY CONTACTS



Christopher Pennington
Partner & Senior Vice President
215.448.6053
cpennington@binswanger.com



Kevin Wang
Sales Associate
215.448.6014
kwang@binswanger.com

