



# FOR LEASE

1,560 TOTAL SQUARE FEET

## OFFICE CONDO



**CHAD WEEKS**

612.619.9911  
cweeks@arrowcos.com  
**arrowcos.com**



**JEFF PENFIELD**

612.325.2067  
jpenfield@arrowcos.com  
**arrowcos.com**



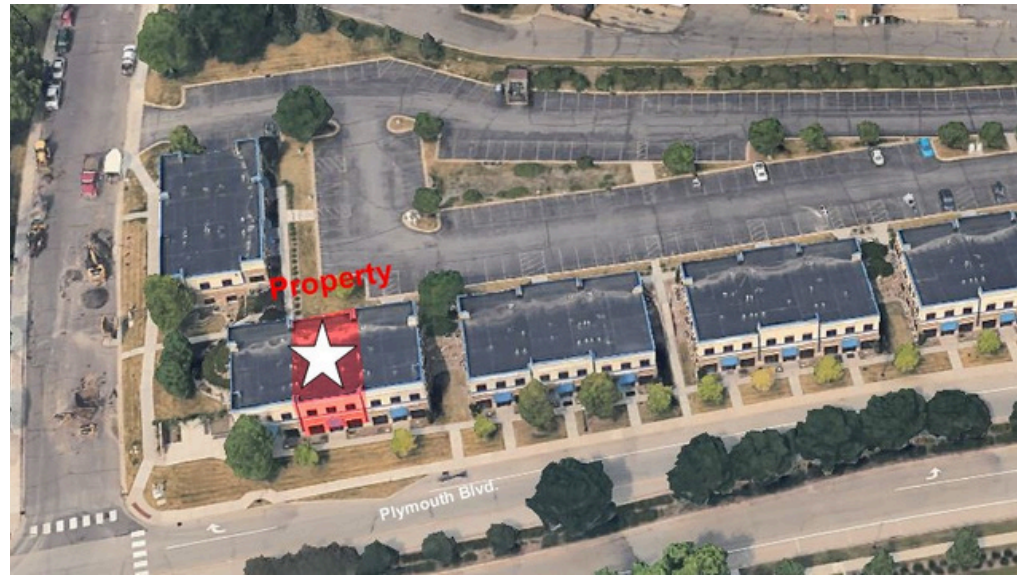
**PLYMOUTH TOWN OFFICE CENTRE**

**3515 PLYMOUTH BLVD., SUITE 105  
PLYMOUTH, MN 55447**



# PROPERTY HIGHLIGHTS

- Don't miss out on this beautiful office space conveniently located in downtown Plymouth! This office condo offers a professional and comfortable work environment.
- Features include four (4) private offices, two (2) with windows, reception desk, file area, kitchenette & private bathroom.
- Great signage available on Plymouth Blvd.
- Perfect space for any small business company or professional firm looking for a home.
- Schedule your tour today!



**PLYMOUTH TOWN OFFICE CENTRE**  
3515 PLYMOUTH BLVD., SUITE 105  
PLYMOUTH, MN 55447

## PROPERTY FACTS

- Built in 2004
- Main Level Office Condo
- Includes 4 offices, reception desk, kitchenette & private bathroom
- Signage available on Plymouth Blvd.



## LEASE RATE:

**Base Rent - \$16.50 / psf**

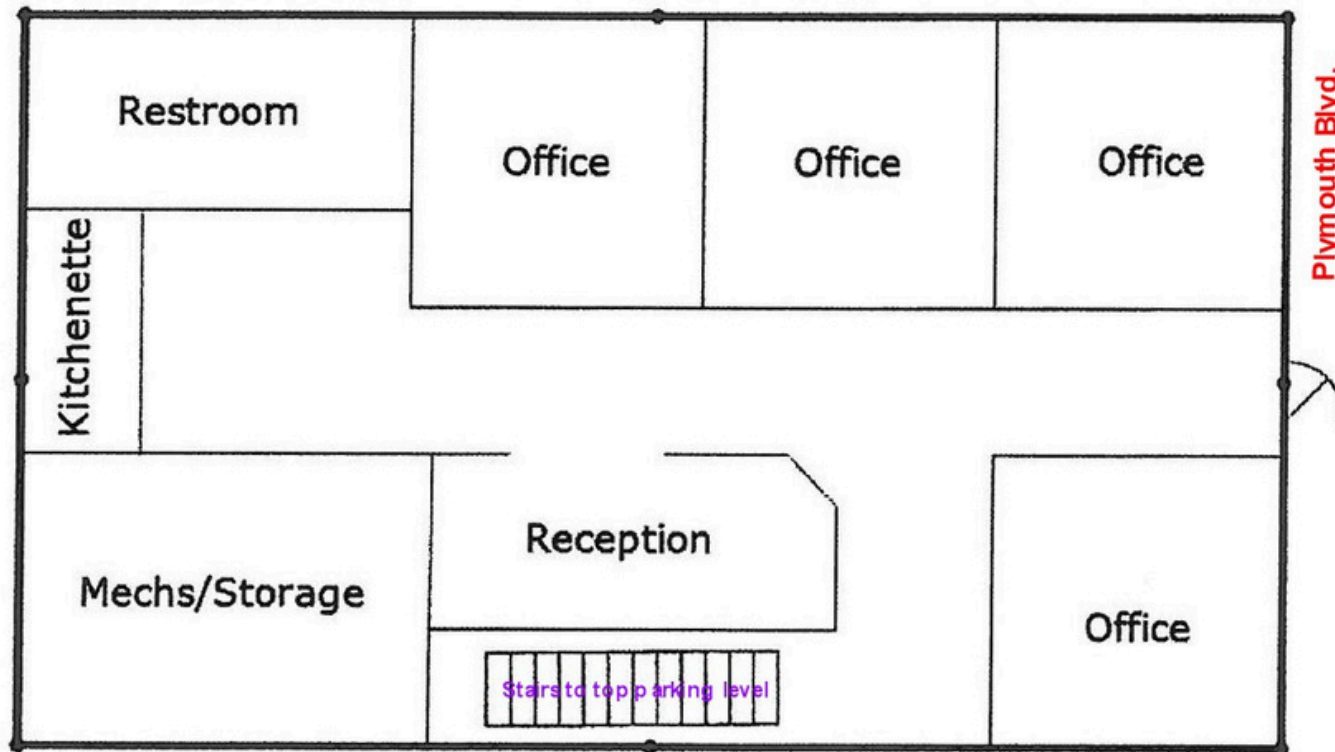
**Taxes - \$4.81 / psf**

**Cam - \$4.23 / psf**



**PLYMOUTH TOWN OFFICE CENTRE**  
**3515 PLYMOUTH BLVD., SUITE 105**  
**PLYMOUTH, MN 55447**

# FLOORPLAN



**PLYMOUTH TOWN OFFICE CENTRE**  
**3515 PLYMOUTH BLVD., SUITE 105**  
**PLYMOUTH, MN 55447**



# PHOTOS

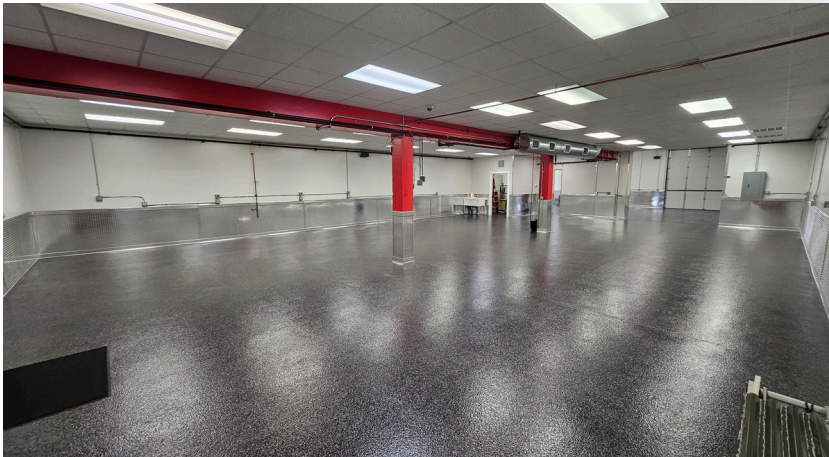


**PLYMOUTH TOWN OFFICE CENTRE**  
**3515 PLYMOUTH BLVD., SUITE 105**  
**PLYMOUTH, MN 55447**



691 39<sup>th</sup> AVE. NE., COLUMBIA HEIGHTS, MN

# PHOTOS



**SHOWROOM / WAREHOUSE**  
**9691 39<sup>th</sup> AVE. NE.**  
**COLUMBIA HEIGHTS, MN 55421**