

666 Plainsboro Road, Building 500
Plainsboro, NJ 08536

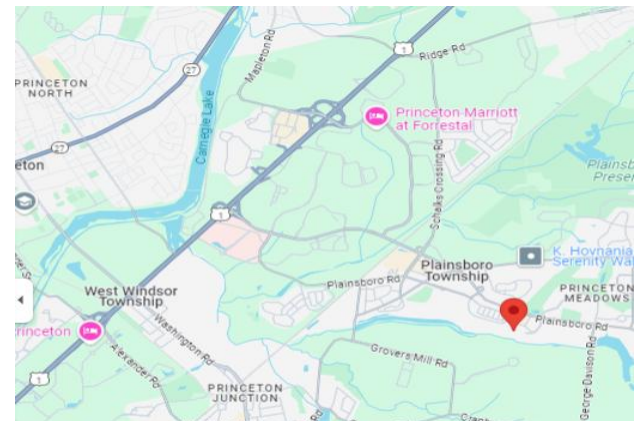
Medical Units Available for Lease:

Suite: 545-555: 1,780 SF

- 1st Floor, Exam Rooms, Private Offices,
- 1 Bathroom, Reception/Waiting Area
- 1 Story Building, Built 1983,
- Floor Size 11,000 SF,
- Parking 40 Spaces
- Located Mercer County
- Easy access to Routes 1, I-295

Lease Rate: call for details

(Operating Expenses: \$9.50/SF plus
Utilities and Interior Janitorial)



For more information:
Gerard Fennelly

For Lease

Medical Space

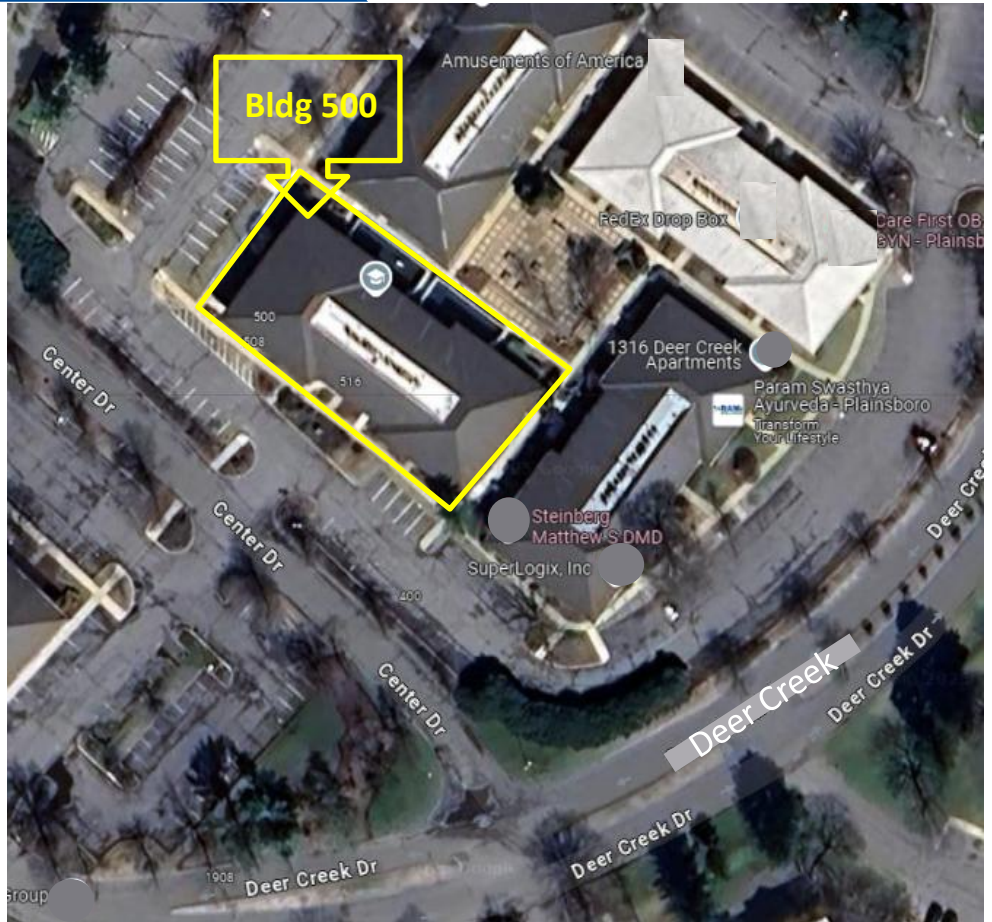
666 Plainsboro Road
Plainsboro, NJ 08536

TRANSPORTATION

Commuter Rail:

- Princeton Junction, NJ Transit, 11 min. drive, 5.8 mi
- Princeton, NJ Transit, 11 min. drive, 6.2 mi
- Hamilton, NJ Transit, 20 min. drive, 12 mi
- Jersey Avenue, NJ Transit, 27 min. drive, 14 mi
- Trenton Transit Center (Njt) River Line, 15.1 mi

Trenton Mercer Airport, 27 min. drive, 17.7 mi



- Located at the center of the Plainsboro Office market
- Nearby amenities include restaurants, shopping, hotels
- Halfway between New York City and Philadelphia



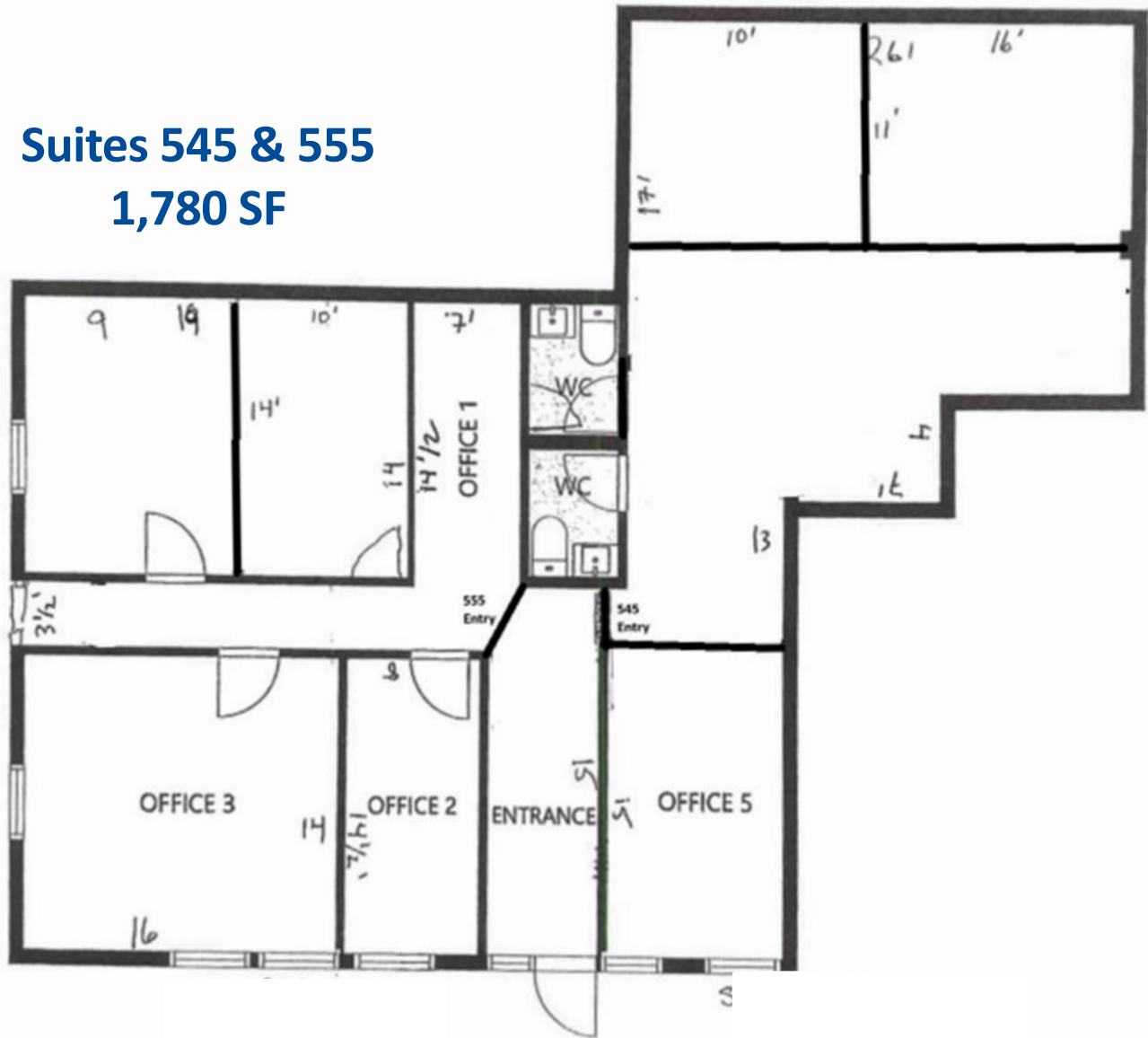
For Lease

1,780 SF Medical Space

666 Plainsboro Road, Bldg 500

Plainsboro, NJ 08536

Suites 545 & 555
1,780 SF



SIZE AND DIMENSIONS ARE APPROXIMATE, ACTUAL MAY VARY.